

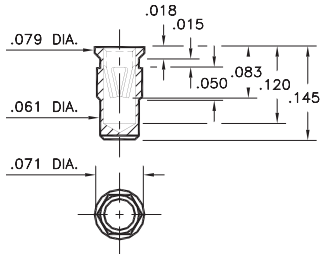
# PIN RECEPTACLES

FOR .022" - .034" DIAMETER PINS AND .025" SQUARE PINS

## 0291

0291-0-15-XX-16-XX-10-0

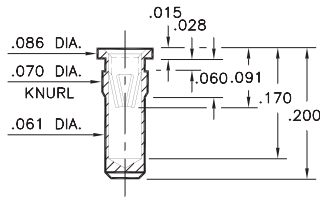
Hex press-fit in .067 plated through-hole



## 0293

0293-0-15-XX-16-XX-10-0

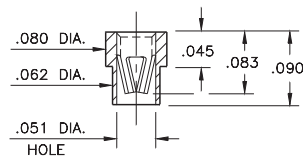
Press-fit in .067 mounting hole



## 0287

0287-0-15-XX-16-XX-10-0

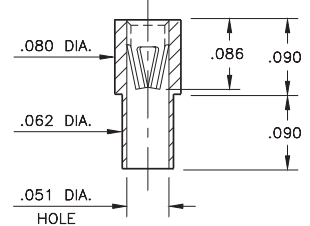
Solder mount in .065 min. mounting hole  
Also available on 8mm wide carrier tape:  
3,250 parts per 13" reel  
See page 194.8 for Tape & Reel details



## 0285

0285-0-15-XX-16-XX-10-0

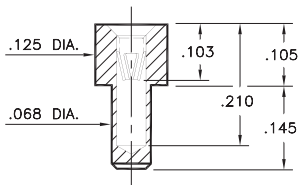
Solder mount in .065 min. mounting hole



## 0284

0284-0-15-XX-16-XX-10-0

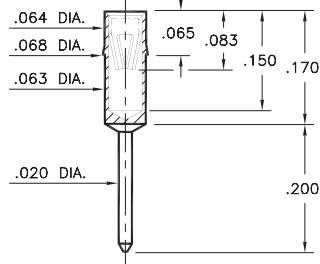
Solder mount in .070 min. mounting hole



## 8114

8114-0-15-XX-16-XX-04-0

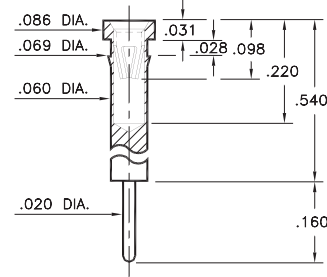
Press-fit from underside of pc board into .065 mounting hole



## 0407

0407-0-15-XX-16-XX-04-0

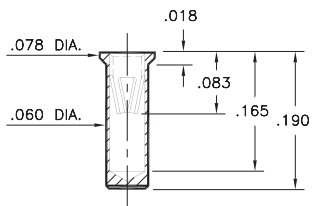
Press-fit in .066 mounting hole



## 0415

0415-0-15-XX-16-XX-10-0

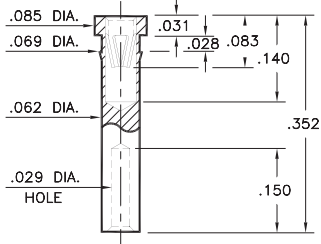
Solder mount in .063 min. mounting hole  
Also available on 24mm wide carrier tape:  
1,500 parts per 13" reel  
See page 194.8 for Tape & Reel details



## 0303

0303-0-19-XX-16-XX-10-0

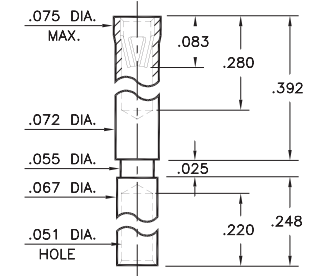
Press-fit in .067 mounting hole  
Wire Crimp Termination. Accepts wire sizes 26 AWG Max. / 30 AWG Min.



## 0306

0306-0-19-XX-16-XX-10-0

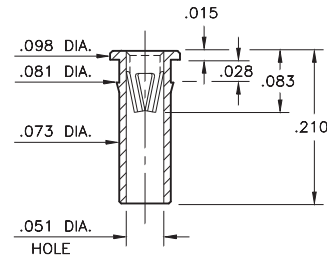
Wire Crimp Termination. Accepts wire sizes 20 AWG Max. / 24 AWG Min.



## 0273

0273-0-15-XX-16-XX-10-0

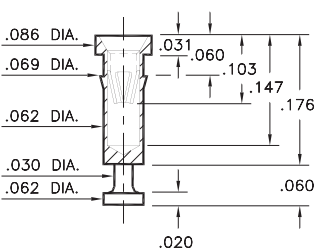
Press-fit in .078 mounting hole



## 7520

7520-0-15-XX-16-XX-10-0

Press-fit in .066 mounting hole



### SPECIFICATIONS:

Shell Material: Brass Alloy 360, 1/2 Hard

Contact Material: Beryllium Copper Alloy 172, HT

Dimensions: Inches

Tolerances On: Lengths: ±.005

Diameters: ±.002

Angles: ± 2°



ORDER CODE: XXXX - X - XX - XX - 16 - XX - XX - 0

BASIC PART #

SPECIFY SHELL FINISH:

01 200 μ" TIN/LEAD OVER NICKEL

◆ 80 200 μ" TIN OVER NICKEL (RoHS)

◆ 15 10 μ" GOLD OVER NICKEL (RoHS)

SPECIFY CONTACT FINISH:

01 200 μ" TIN/LEAD OVER NICKEL

◆ 80 200 μ" TIN OVER NICKEL (RoHS)

◆ 27 30 μ" GOLD OVER NICKEL (RoHS)

SELECT CONTACT:

#16 CONTACT (DATA ON PAGE 256)

(For alternate contact choices, see group D on page 248)



# Mouser Electronics

Authorized Distributor

Click to View Pricing, Inventory, Delivery & Lifecycle Information:

## Mill-Max:

[7520-0-15-01-16-01-10-0](#) [7520-0-15-01-16-27-10-0](#) [0407-0-15-80-16-80-04-0](#) [0407-0-15-80-16-27-04-0](#) [0306-0-19-80-16-80-10-0](#) [0306-0-19-80-16-27-10-0](#) [0303-0-19-80-16-80-10-0](#) [0303-0-19-80-16-27-10-0](#) [0293-0-15-80-16-80-10-0](#) [0287-0-15-80-16-80-10-0](#) [0287-0-15-80-16-27-10-0](#) [0285-0-15-80-16-80-10-0](#) [0285-0-15-80-16-27-10-0](#) [0284-0-15-80-16-80-10-0](#) [0284-0-15-80-16-27-10-0](#) [0273-0-15-80-16-80-10-0](#) [0273-0-15-80-16-27-10-0](#) [0293-0-15-01-16-27-10-0](#) [0415-0-15-15-16-14-10-0](#) [0415-0-15-01-16-14-10-0](#) [0284-0-15-15-16-27-10-0](#) [0415-0-15-01-16-01-10-0](#) [0415-0-15-01-16-27-10-0](#) [0407-0-15-01-16-01-04-0](#) [0407-0-15-01-16-27-04-0](#) [0306-0-19-01-16-01-10-0](#) [0306-0-19-01-16-27-10-0](#) [0303-0-19-01-16-01-10-0](#) [0303-0-19-01-16-27-10-0](#) [0293-0-15-01-16-01-10-0](#) [0287-0-15-01-16-01-10-0](#) [0287-0-15-01-16-27-10-0](#) [0285-0-15-01-16-01-10-0](#) [0285-0-15-01-16-27-10-0](#) [0284-0-15-01-16-01-10-0](#) [0284-0-15-01-16-27-10-0](#) [0273-0-15-01-16-27-10-0](#) [7520-0-15-80-16-80-10-0](#) [7520-0-15-80-16-27-10-0](#) [0273-0-15-15-16-27-10-0](#) [0284-0-15-00-00-00-10-0](#) [0285-0-15-00-00-00-10-0](#) [0287-0-15-00-00-00-10-0](#) [0287-0-15-15-16-27-10-0](#) [0291-0-15-15-16-27-10-0](#) [0293-0-15-00-00-00-10-0](#) [0293-0-15-15-16-27-10-0](#) [0303-0-19-15-16-27-10-0](#) [0306-0-19-15-16-27-10-0](#) [0407-0-15-15-16-27-04-0](#) [0415-0-15-15-16-27-10-0](#) [7520-0-15-15-16-27-10-0](#) [0293-0-15-21-16-35-10-0](#) [0305-0-15-00-00-00-10-0](#) [0293-0-15-01-16-14-10-0](#) [0293-0-15-80-16-14-10-0](#) [0287-0-15-01-16-14-10-0](#) [7520-0-15-80-16-14-10-0](#) [0287-0-15-15-16-14-10-0](#) [0407-0-15-01-16-14-04-0](#) [0273-0-15-80-16-14-10-0](#) [0303-0-19-01-16-14-10-0](#) [0407-0-15-80-16-14-04-0](#) [0284-0-15-01-16-14-10-0](#) [0273-0-15-01-16-14-10-0](#) [0285-0-15-80-16-14-10-0](#) [0306-0-19-01-16-14-10-0](#) [0415-0-15-80-16-14-10-0](#) [0306-0-19-80-16-14-10-0](#) [0284-0-15-80-16-14-10-0](#) [0285-0-15-01-16-14-10-0](#) [0287-0-15-80-16-14-10-0](#) [0303-0-19-80-16-14-10-0](#) [0293-0-15-15-16-14-10-0](#) [0284-0-15-15-16-14-10-0](#) [8114-0-15-01-16-14-04-0](#) [8114-0-15-80-16-14-04-0](#) [7520-0-15-01-16-14-10-0](#) [8114-0-15-80-16-80-04-0](#) [8114-0-15-80-16-27-04-0](#) [8114-0-15-01-16-01-04-0](#) [8114-0-15-01-16-27-04-0](#)