



RoHS

## KPPX/KPJX Series

### Snap and Lock PCB and Cable Mount

**Features** 

- Laptop Computers, Power Supplies and Other Portable Digital Equipment Applications
- Snap and Lock Feature Helps to Prevent Accidental Disconnects
- 3 or 4 Pins Transmit Power, or One Pin Can be Used For Signal Transmission
- For Signal and DC Power Applications
- Plugs Supplied in Kits Ready for Assembly
- CSA/NRTL Certified File No. LR78160

## Performance Specifications

### Materials and Finish

#### Jack

**Shield:** Tin Plated

**Body:** PBT UL94 V-0 Rated

**HT Body:** High Temperature Thermoplastic, UL94 V-0 Rated

#### Plug

**Body:** ABS, UL 94HB Rated

**Insert:** Nylon, UL 94HB Rated

### Electrical Characteristics

#### Contact Rating

**3 Position:** Pin 1 and 2, 24V DC at 7.5A Max.,  
Pin 3, 24V DC 1.0A Max.

**4 Position:** 24V DC 7.5A Max. for all Pins

**Insulation Resistance:** 50 Megohms Min. at 250V DC

**Dielectric Withstanding Voltage:** 500V AC for 1 Minute

**Contact Resistance:** 30 milliohms Max.

### Mechanical Characteristics

**Durability Test:** 1000 Cycles

**Suggested Wire Awg.:** #18 for Power Wires, #24 for Signal Wire

## DC POWER CONNECTORS

### KPJX / KPPX Series

#### Ordering Information

Series	Mounting Option	No of Contacts	Contact Type	Shield Option
--------	-----------------	----------------	--------------	---------------

#### Series

KPJX - Right Angle Receptacle  
 KPJX-CM - Receptacle, Cable Mount  
 KPJX-PM - Receptacle, Panel Mount  
 KPJXHT - High Temp Right Angle Receptacle  
 KPPX - Snap and Lock DC Power Plug Cable Mount

#### Number of Contacts

3 Pin  
 4 Pin

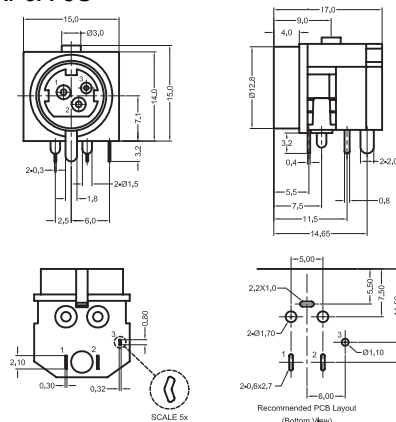
#### Contact Type

S - Socket (KPJX Only)  
 P - Plug (KPPX Only)

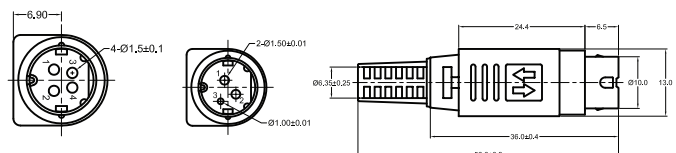
#### Shield Option

Blank - Non-Shielded  
 S - Shielded (KPJX, KPJX-PM and KPJXHT only)

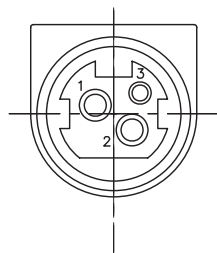
#### KPJX-3S



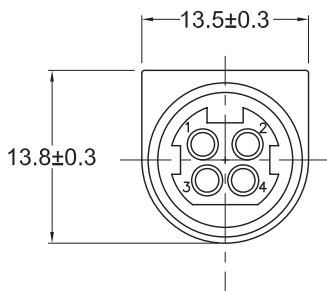
#### KPPX-xP



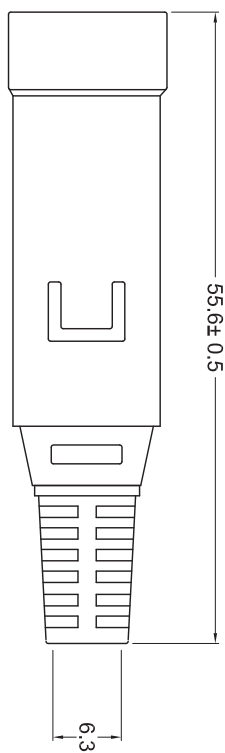
**KPJX-CM-xS**



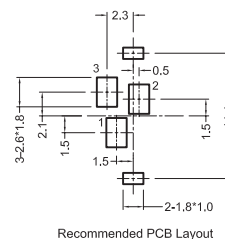
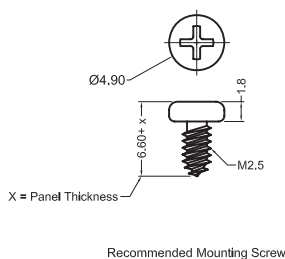
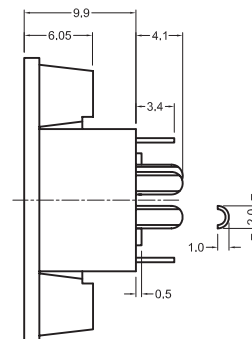
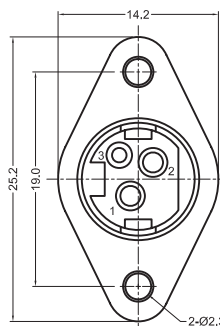
3 PIN CONFIGURATION



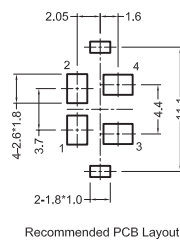
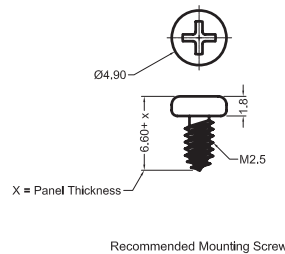
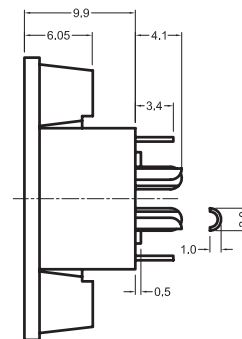
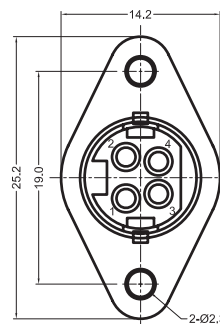
4 PIN CONFIGURATION



**KPJX-PM-3S**



**KPJX-PM-4S**



# Mouser Electronics

Authorized Distributor

Click to View Pricing, Inventory, Delivery & Lifecycle Information:

[Kycon:](#)

[KPPX-D](#) [KPPX-3P-SR7DI](#) [KPPX-4P-SR7DI](#) [KPPX-H](#)