



Cable entry with membrane for unassembled cables, Mounting type: Rasten, Length: 147 mm, Width: 58 mm, IP66, Colour: Black

RAL: 9005

Business data

| | |
|--|-------------|
| Packaging unit | 10 |
| Quantity unit | PC |
| Weight per piece (not including packaging) | 111.6 g |
| Weight per piece (including packaging) | 118.6 g |
| Unit of weight | G |
| Customs number | 39259020 |
| Country of origin | DE |
| Product description | Cable Entry |

28654.4

KES-R 17/24 BK

Technical data

Dimensions

| | |
|-----------------------|----------|
| Length | 149.6 mm |
| Length of wall cutout | 112 mm |
| Width | 58 mm |
| Width of wall cutout | 36 mm |
| Installation height | 14.5 mm |

Materials

| | |
|---------------------------|---------------|
| Material | Polyamide 6.6 |
| Glass-fibre reinforced | ✓ |
| Flammability class UL 94 | V-0 |
| Working temperature, min. | -40 °C |
| Working temperature, max. | 90 °C |
| Sealing material | TPE |
| Halogen-free | ✓ |
| Silicone-free | ✓ |

Further technical data

| | |
|--|---------|
| Mounting type | Snap-on |
| Sheet thickness min. | 1.5 mm |
| Sheet thickness max. | 2 mm |
| NEMA Type | 1 |
| Number of wires | 17 |
| Number of cables for cable diameters 3.2 - 6.3 mm | 4 |
| Number of cables for cable diameters 4.0 - 7.5 mm | 2 |
| Number of cables for cable diameters 5.5 - 10.5 mm | 1 |
| Number of cables for cable diameters 8.0 - 12.5 mm | 10 |
| Degree of protection for snap-in mounting | IP54 |

Print

| | |
|--------|-------|
| Colour | Black |
|--------|-------|

Data sheet

28654.4

KES-R 17/24 BK



Technical data

Environmental Product Compliance

| | |
|--------------------------------|------------|
| REACH Conform | yes |
| REACH Reference date | 2021-07-08 |
| REACH Candidate Substance Note | No |
| RoHS Conform | yes |

28654.4

KES-R 17/24 BK

Approvals

cUL Recognized

| | |
|--------------|-----------------|
| cUL approval | C22.2 No. 14-18 |
|--------------|-----------------|

| | |
|----------------|-----|
| cUL Recognized | yes |
|----------------|-----|

UL Recognized

| | |
|-------------|---------|
| UL approval | UL 508A |
|-------------|---------|

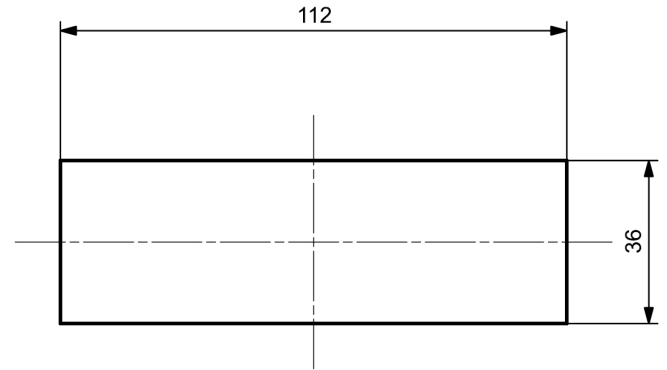
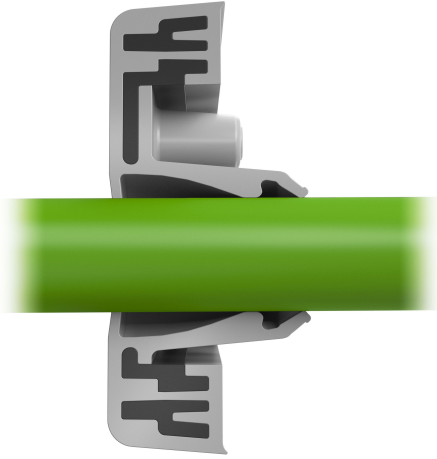
| | |
|---------------|-----|
| UL Recognized | yes |
|---------------|-----|

Data sheet

28654.4

KES-R 17/24 BK

Media



CRA[®]US

28654.4

KES-R 17/24 BK

Accessories

EMC brackets



Shield-connection rail enabling mounting of shield connection clips directly on cable entry system KDS and KES, Mounting type: Screw, Length: 35,3 mm, Width: 140 mm, Height: 16 mm, Profile: 10x3 mm

detail.dataSheet.generalOrderData

| Product number: | detail.dataSheet.productName | GTIN (EAN) | detail.dataSheet. |
|-----------------|------------------------------|---------------|-------------------|
| 28626.0 | KDS-EMV-SAB 10/24 | 4044211219659 | 500 ST |

28654.4

KES-R 17/24 BK

Accessories

Sheet-metal puncher



Sheet metal puncher for rectangular openings, Dimensions opening: 112 x 36 mm, Maximum wall thickness: 2.0 mm for stainless steel sheet, Material: steel

detail.dataSheet.generalOrderData

| Product number: | detail.dataSheet.productName | GTIN (EAN) | detail.dataSheet. |
|-----------------|------------------------------|---------------|-------------------|
| 28752.0 | BL-VA KES | 4044211221935 | 500 ST |



Sheet metal puncher for rectangular openings, Dimensions opening: 112 x 36 mm, Maximum wall thickness: 2.0 mm for S 235 sheet, Material: steel

detail.dataSheet.generalOrderData

| Product number: | detail.dataSheet.productName | GTIN (EAN) | detail.dataSheet. |
|-----------------|------------------------------|---------------|-------------------|
| 28744.0 | BL KES | 4044211221942 | 500 ST |