

Cable entry with membrane for unassembled cables, Mounting type: Rasten, Length: 147 mm, Width: 58 mm, IP66, Colour: Grey

RAL: Ähnlich 7035

Business data

Packaging unit	10
Quantity unit	PC
Weight per piece (not including packaging)	113.6 g
Weight per piece (including packaging)	120.6 g
Unit of weight	G
Customs number	39259020
Country of origin	DE
Product description	Cable Entry

28653.6

KES-R 16-1/24 GR

Technical data

Dimensions

Length	149.6 mm
Length of wall cutout	112 mm
Width	58 mm
Width of wall cutout	36 mm
Installation height	14.5 mm

Materials

Material	Polyamide 6.6
Glass-fibre reinforced	✓
Flammability class UL 94	V-0
Working temperature, min.	-40 °C
Working temperature, max.	90 °C
Sealing material	TPE
Halogen-free	✓
Silicone-free	✓

Further technical data

Mounting type	Snap-on
Sheet thickness min.	1.5 mm
Sheet thickness max.	2 mm
NEMA Type	1
Number of wires	16
Number of cables for cable diameters 3.2 - 6.3 mm	2
Number of cables for cable diameters 4.0 - 7.5 mm	9
Number of cables for cable diameters 5.5 - 10.5 mm	1
Number of cables for cable diameters 8.0 - 12.5 mm	1
Number of cables for cable diameters 12.0 - 16.2 mm	3
Degree of protection for snap-in mounting	IP54

Print

Colour	Grey
--------	------

Data sheet

28653.6

KES-R 16-1/24 GR



Technical data

Environmental Product Compliance

REACH Conform	yes
REACH Reference date	2021-07-08
REACH Candidate Substance Note	No
RoHS Conform	yes

Data sheet

28653.6

KES-R 16-1/24 GR



Approvals

cUL Recognized

cUL approval	C22.2 No. 14-18
--------------	-----------------

cUL Recognized	yes
----------------	-----

UL Recognized

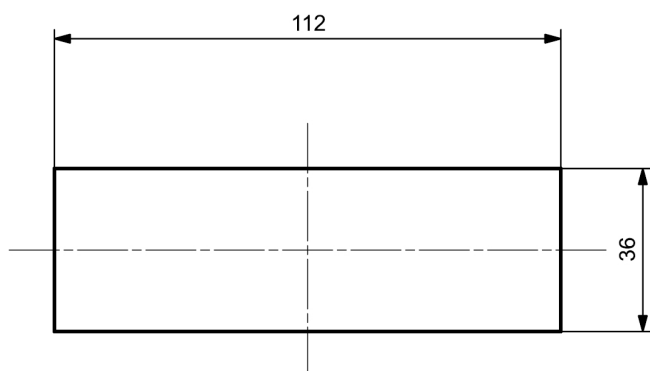
UL approval	UL 508A
-------------	---------

UL Recognized	yes
---------------	-----

28653.6

KES-R 16-1/24 GR

Media



CRA[®] US

28653.6

KES-R 16-1/24 GR

Accessories

EMC brackets



Shield-connection rail enabling mounting of shield connection clips directly on cable entry system KDS and KES, Mounting type: Screw, Length: 35,3 mm, Width: 140 mm, Height: 16 mm, Profile: 10x3 mm

detail.dataSheet.generalOrderData

Product number:	detail.dataSheet.productName	GTIN (EAN)	detail.dataSheet.
28626.0	KDS-EMV-SAB 10/24	4044211219659	500 ST

28653.6

KES-R 16-1/24 GR

Accessories

Sheet-metal puncher



Sheet metal puncher for rectangular openings, Dimensions opening: 112 x 36 mm, Maximum wall thickness: 2.0 mm for stainless steel sheet, Material: steel

detail.dataSheet.generalOrderData

Product number:	detail.dataSheet.productName	GTIN (EAN)	detail.dataSheet.
28752.0	BL-VA KES	4044211221935	500 ST



Sheet metal puncher for rectangular openings, Dimensions opening: 112 x 36 mm, Maximum wall thickness: 2.0 mm for S 235 sheet, Material: steel

detail.dataSheet.generalOrderData

Product number:	detail.dataSheet.productName	GTIN (EAN)	detail.dataSheet.
28744.0	BL KES	4044211221942	500 ST