

SPRING-LOADED CONNECTORS

SERIES 419, 499 • 2,54 GRID CONCAVE FACE TARGET CONNECTORS FOR SPRING-LOADED ASSEMBLIES • DOUBLE ROW STRIPS

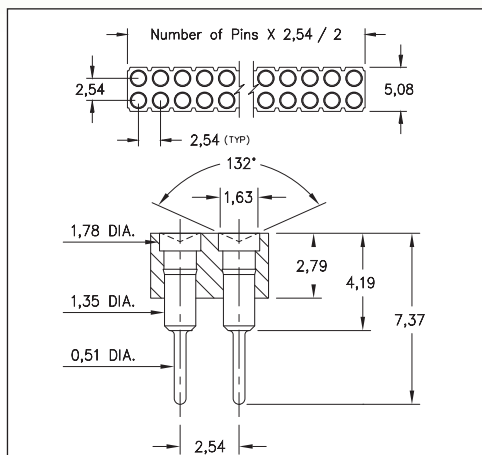
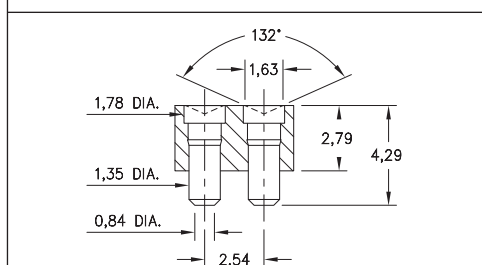
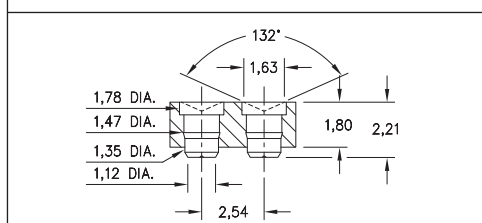


FIG. 1



Coplanarity 0,13. For Pin counts >20 positions, consult Technical Support.

FIG. 2



Coplanarity 0,13. For Pin counts >20 positions, consult Technical Support.

FIG. 3

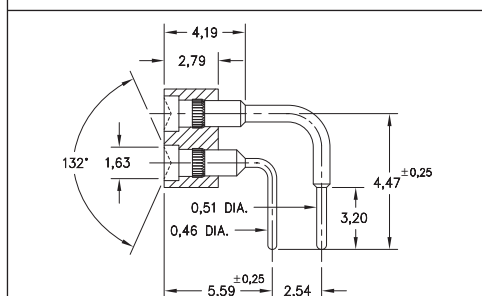
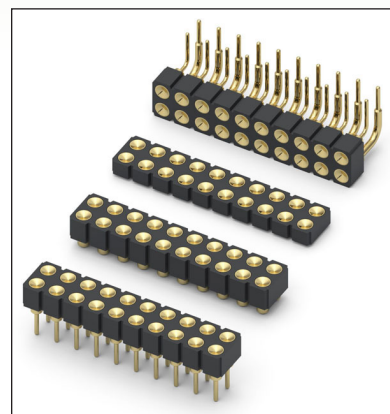


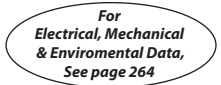

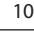


FIG. 4

- Series 419 and 499 Spring Target Connectors, supplied in double row strips. Available in SMT and right angle through-hole termination configurations
- Target Connectors provide an excellent gold-plated conductive mating surface for spring loaded connectors. These series are offered with a concave face for making contact with our standard 1,07 dia. spring pin plungers
- Target connectors use MM #1947, #1948, #1955 and #1958/1960 pins. See pages 223.1, 223.2 and 223.3 for details
- Insulators are high temperature thermoplastic



ORDERING INFORMATION

	Series 419...006	Standard Solder Tails
FIG. 1	419-10-2	-00-006000
	Specify number of pins	04-64
	Series 419...007	Surface Mount
FIG. 2	419-10-2	-30-007000
	Specify number of pins	04-72
	Series 419...055	Low Profile Surface Mount
FIG. 3	419-10-2	-30-055000
	Specify number of pins	04-72
	Series 499...007	Right Angle Solder Tails
FIG. 4	499-10-2	-10-007000
	Specify number of pins	02-64
  		
SPECIFY PLATING CODE XX=		
Pin Plating		10  0,25µm Au

Mouser Electronics

Authorized Distributor

Click to View Pricing, Inventory, Delivery & Lifecycle Information:

Mill-Max:

[499-10-210-10-007000](#) [499-10-220-10-007000](#) [499-10-204-10-007000](#) [499-10-206-10-007000](#) [499-10-208-10-008000](#) [499-13-240-10-003000](#) [499-10-206-10-009000](#) [499-13-218-10-003000](#) [499-10-206-10-008000](#) [499-10-212-10-008000](#) [499-10-204-10-008000](#) [499-10-264-10-007000](#) [499-10-224-10-009000](#) [499-10-226-10-007000](#)