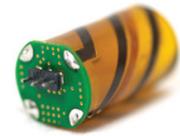


# M1575HCT-22-P

## HIGH PERFORMANCE PASSIVE GPS ANTENNA

Ordering Part #: TBD (Custom)

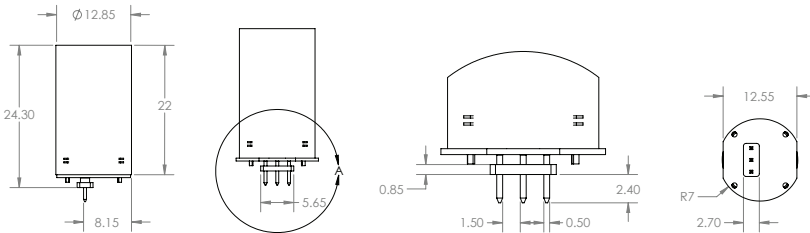


### Description

The M1575HCT-22-P is a high performance passive antenna designed for the GPS L1 band, and built on proprietary Helicore® technology. This technology provides exceptional pattern control, polarization purity and high efficiency in a very compact form factor. The M1575HCT-22-P is designed for embedded applications and features an integrated 3-pin connector. This product is designed for applications requiring high quality reception of GPS signals. The ultra light design weighs only 2 grams making this antenna ideal for the most demanding, mechanically constrained platforms including handheld devices, asset tracking, seismic recording instruments and many more.

### Mechanical Specifications

dimensions are in mm



### Electrical Specifications\*

Parameter	Design Specifications
Frequency	1575 MHz
Polarization	RHCP
Antenna element peak gain	-0.5 dBic (typical)
Efficiency	25% (typical)
Bandwidth (-1dB)	20 MHz
Axial Ratio	1 dB (typical) / 1.5 dB (max)
VSWR	1.5 (max)
Impedance	50 Ohm
Operating temp.	from -40°C to 85°C
RF connector	3 pin, U.FL
Overall dimensions	See mechanical drawing above
Weight	2 grams

\* Declared peak gain and reported radiation pattern are intended for a rotationally symmetrical plastic radome.

### Features

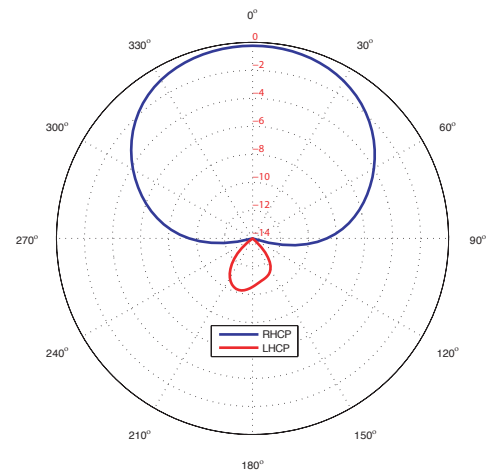
- GPS band
- Very low axial ratio
- Easy integrate 3 pin connector
- Ultra light weight - 2 grams
- Ground plane independent

### Applications

- Vehicle and fleet tracking
- Military & security
- Asset tracking
- Seismic recording instruments
- Oil & gas industries
- Navigation devices
- Mining equipment
- LBS & M2M applications
- Handheld devices

### Realized gain plot

Measured at 1575 MHz



# Mouser Electronics

Authorized Distributor

Click to View Pricing, Inventory, Delivery & Lifecycle Information:

[Maxtena:](#)

[M1575HCT-22P-E1](#) [M1575HCT-22P-E2](#) [M1575HCT-22P-E3](#) [M1575HCT-22P-E4](#) [M1575HCT-22P-E5](#) [M1575HCT-22P-E6](#)