



Sewable CR2032 Battery Holder

PRODUCT ID: 653

IN STOCK

1

ADD TO CART

1-9

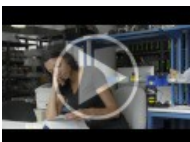
10-99

100+

ADD TO WISHLIST

DESCRIPTION

TECHNICAL DETAILS



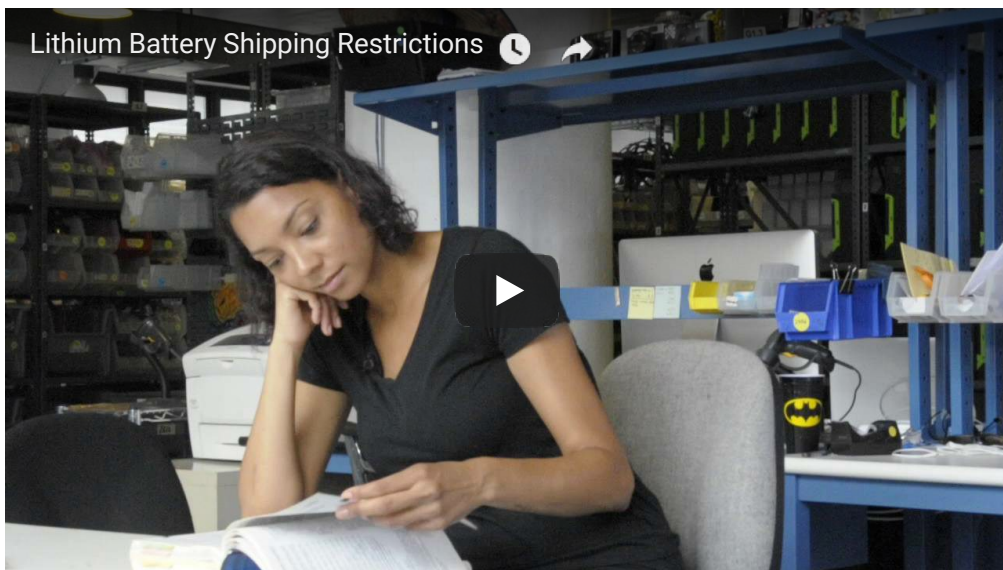
DESCRIPTION

This battery holder is by far the easiest way to add a battery to a small wearable project. By coincidence, there are two small 1mm diameter holes in the metal connection tabs, just large enough for a #5 or smaller needle to pass through. One tab connects to common ground (negative) and the other tab is +3 Volts.

This holder is meant to be used with Lithium CR2032 (20mm diameter, 3.2mm thick) sized coin batteries. These are almost always 3V at about 200+ mAh capacity. Lithium coin cells are not

rechargeable but they are very easy to find, available at any grocery store.

Inserting the coin is easy, the holder is very sturdy, and it snaps out with a push. Its got a nice flat plastic back that you can easily glue in place for extra mechanical stability.



TECHNICAL DETAILS

[Datasheet with measurements](#)

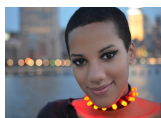


LEARN



[Citi Bike Helmet](#)

Navigation & visibility with FLORA!



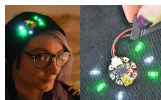
[Punk LED Collar](#)

Studded leather choker with LEDs



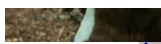
[NeoPixel Ring Clock](#)

Keep time with FLORA



[Adafruit LED Sequins](#)

Stitch some sparkle into your next wearable



[GPS Logging Dog Harness](#)



Get yer log on



[Let's Put LEDs in Things!](#)

Intro to electronics for cosplayers, no prior experience required



[Battery Powering Wearable Electronics](#)

Find the perfect power pack

MAY WE ALSO SUGGEST...



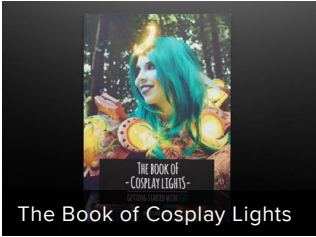
CR2032 Lithium Coin Cell



Stainless Medium



Stainless Thin Conductive



The Book of Cosplay Lights



Camcorder Battery Holder



20mm Coin Cell Breakout



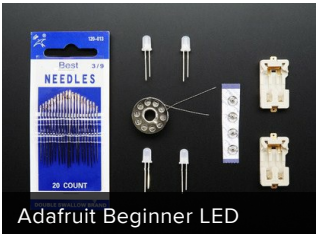
2 x 2032 Coin Cell Battery



Camcorder Battery Holder



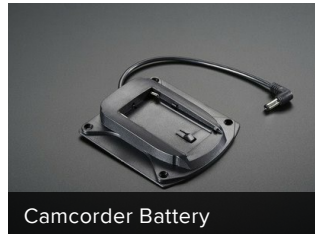
20mm Coin Cell Breakout



Adafruit Beginner LED



Flora Sewable 3-Pin JST



Camcorder Battery

DISTRIBUTORS [EXPAND TO SEE DISTRIBUTORS](#)

[CONTACT](#)

[SUPPORT](#)

[DISTRIBUTORS](#)

[EDUCATORS](#)

[JOBS](#)

[FAQ](#)

[SHIPPING & RETURNS](#)

"The best way to predict the future is to invent it" - Alan Kay

[TERMS OF SERVICE](#)

[PRIVACY & LEGAL](#)

[ABOUT US](#)



ENGINEERED IN NYC Adafruit®

4.9 ★★★★★
Google
Customer Reviews