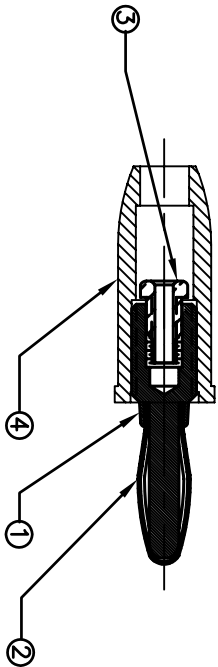
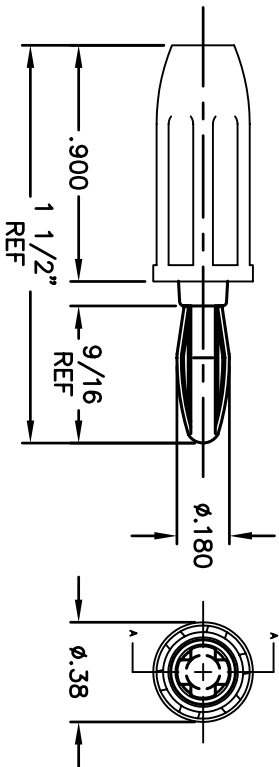


BILL OF MATERIALS				
DET.	QTY.	DESCRIPTION	MATERIAL	FINISH
1	1	BODY	BRASS	SEE NOTE
2	1	SPRING - CONTACT	BERYLLIUM-COPPER	SEE NOTE
3	1	STUD - SCREW	BRASS	TIN
4	1	HANDLE	LEXAN 940	-

NOTE:
BODY AND CONTACT TO BE PLATED
NICKEL AFTER ASSEMBLY



REVISIONS			
SYM	DESCRIPTION	REVISED	DATE
C	REDRAWN ON CAD FROM REV B	TPL	1/4/05

BANANA PLUG	
PART NO.	FINISH
476-101	WHITE
476-102	RED
476-103	BLACK
476-104	GREEN
476-105	BLUE
476-107	YELLOW

RATINGS:
1000V
15AMPS

OPERATING TEMP: +240°F MAX

MATERIAL: SEE BOM		FINISH: SEE BOM	
DIMENSIONAL TOLERANCES UNLESS OTHERWISE SPECIFIED		TITLE: 476	
XX	.XXX	BANANA PLUG ASSEMBLY	
±.015	±.005	Electronic Connectors and Hardware	
FRACTIONS	ANGLES	632 Arch Street, Meadville, Pa. 16335	
±1/64	±1°	ABBATRON	
HEAT TREAT:	SCALE	DRAWN: T. LORD DATE: 1/4/05	
PLAT SCALE:	1=1	CHECKED: T. LORD DATE: 1/4/05	
		APPROVED: T. LORD DATE: 1/4/05	
		SIZE: B	DRAWING NUMBER: 476
		ISSUE: C	