

SMT GPIO Header for Raspberry Pi HAT - 2x20 Short Female Header

PRODUCT ID: 2187

IN STOCK

1

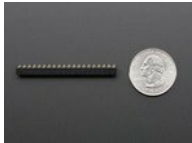
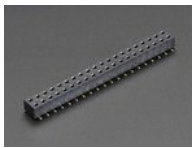
ADD TO CART

1-9

10-99

100+

ADD TO WISHLIST

[DESCRIPTION](#)[TECHNICAL DETAILS](#)

DESCRIPTION

For super-slim SMT designs, this custom-made, 2x20 short SMT female header can be used to plug a Raspberry Pi HAT onto a B+ or A+ or Pi 2. It's harder to use than the Thru-Hole type headers, but for the slickest, slimmest fit, this header is recommended!

TECHNICAL DETAILS

- [Spec Sheet / Diagram](#) - part #C25582-40G-M36-0A



RoHS

MAY WE ALSO SUGGEST...



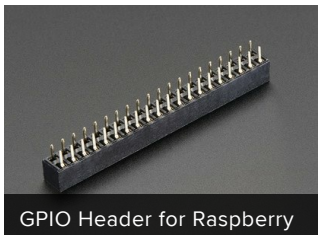
GPIO Header for Raspberry



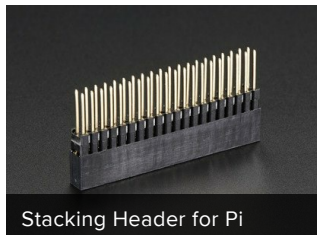
Raspberry Pi Model B+



GPIO Stacking Header for Pi



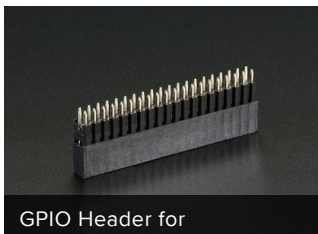
GPIO Header for Raspberry



Stacking Header for Pi



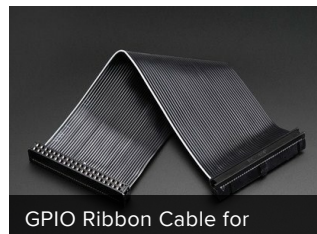
IDC Breakout Helper - 2x20



GPIO Header for



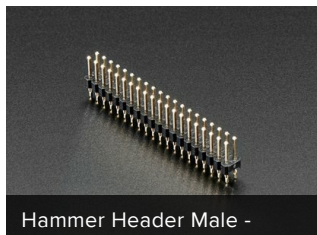
Raspberry Pi Model A+



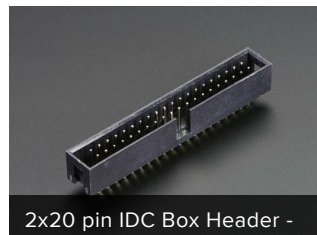
GPIO Ribbon Cable for



SWD 0.05" Pitch Connector



Hammer Header Male -



2x20 pin IDC Box Header -

DISTRIBUTORS [EXPAND TO SEE DISTRIBUTORS](#)

[CONTACT](#)

[SUPPORT](#)

[DISTRIBUTORS](#)

[EDUCATORS](#)

[JOBS](#)

[FAQ](#)

[SHIPPING & RETURNS](#)

[TERMS OF SERVICE](#)

[PRIVACY & LEGAL](#)

[ABOUT US](#)

"Be so good they can't ignore you" -
Steve Martin

ENGINEERED IN NYC Adafruit®



4.9 ★★★★★
Google
Customer Reviews