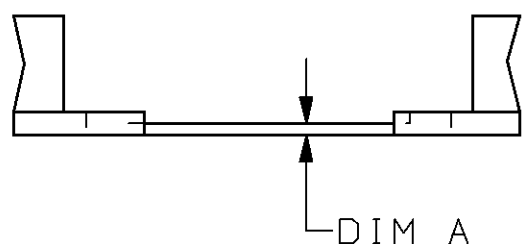
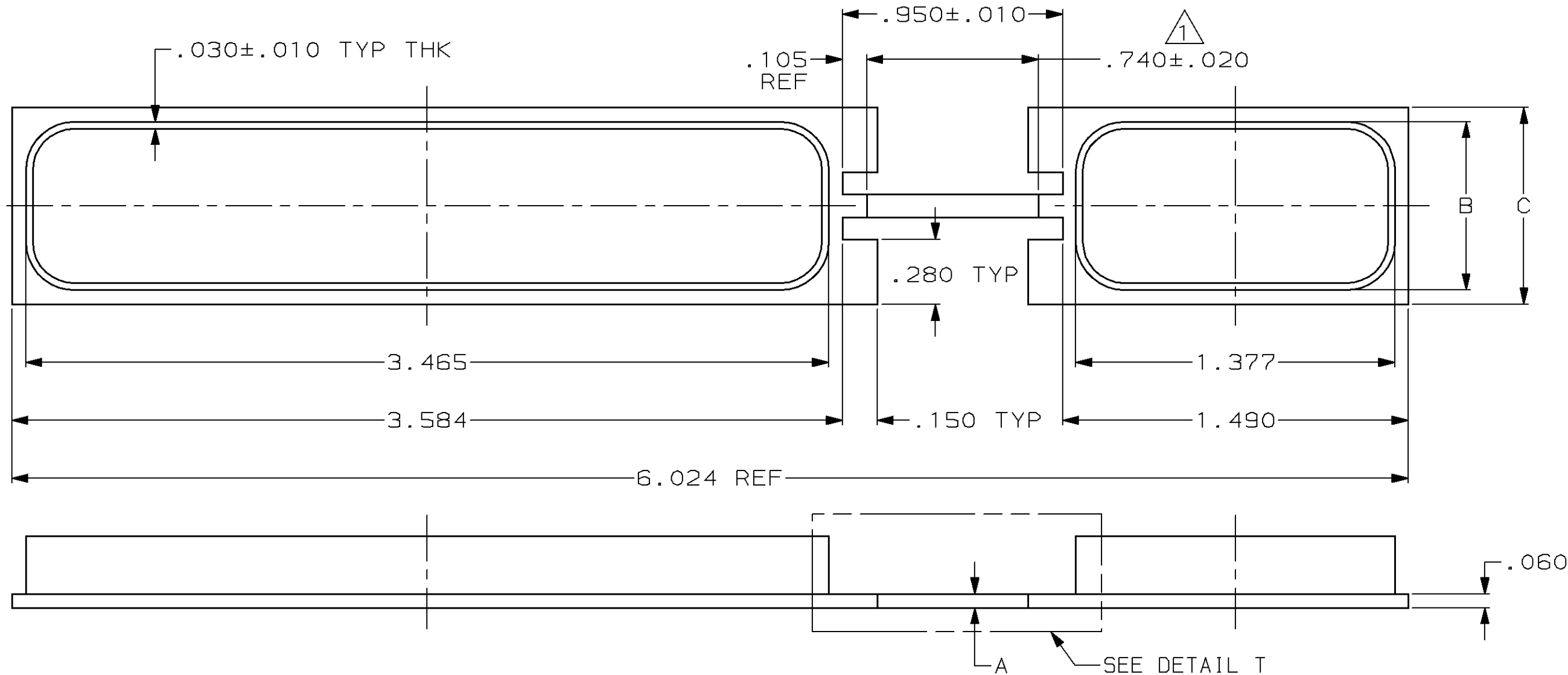


THIS DRAWING IS UNPUBLISHED. RELEASED FOR PUBLICATION, 19 .
 © COPYRIGHT 19 BY AMP INCORPORATED. ALL INTERNATIONAL RIGHTS RESERVED.

LOC	DIST	P	F	REVISIONS				
				ZONE	LTR	DESCRIPTION	DATE	APPD
DF	A0				F	REV PER 0600-1583-94 TT	03-94	RG
					G	REV PER 0600-5176-96 TA	3-97	AS

⚠ DIM B HELD OVER THIS LENGTH FOR 211600-2 ONLY.



DETAIL T
FOR 211600-2 ONLY

2 & 3	1.450	.1.329	.030	211600-2
1	.850	.727	.060	211600-1
CONN SIZE	C	B	A	PART NUMBER

DO NOT SCALE PRINT. UNLESS SPECIFIED DIMENSIONS IN mm [INCHES] TOLERANCES ON: 2 PLC DEC ± - 3 PLC DEC ± .015 ANGLES ± -	DR	03-08-94 T. THOMPSON
	CHK	03-08-94 S. WRIGHT
	APPD	03-08-94 S. WRIGHT
	REL	03-08-94 T. THOMPSON
MATERIAL	CONDUCTIVE THERMOPLASTIC	
FINISH	-	
PRODUCT SPEC	-	
APPLICATION SPEC	-	
WEIGHT	-	

AMP AMP Incorporated Harrisburg, PA 17105-3608		
NAME DUST COVER, ARINC 600, PLUG AND RECEPTACLE		
SIZE B	CAGE CODE 00779	DRAWING NO C-211600
SCALE 2:1	SHEET 1 OF 1	

THIS DRAWING IS A CONTROLLED DOCUMENT FOR AMP INCORPORATED. IT IS SUBJECT TO CHANGE AND THE CONTROLLING ENGINEERING ORGANIZATION SHOULD BE CONTACTED FOR THE LATEST REVISION.