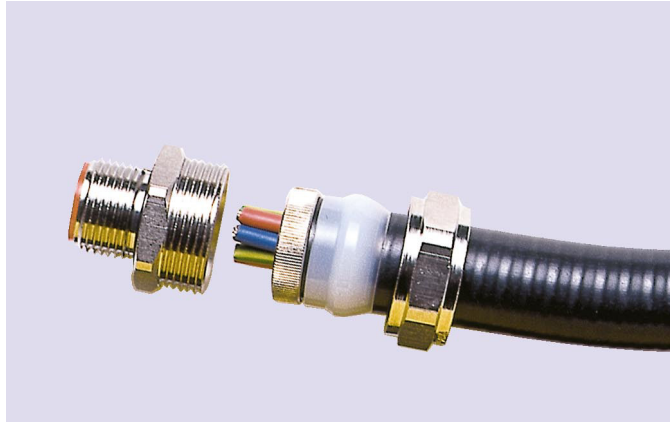


## Assembly Instructions for M type fittings to Suit SPL/SPUL/SPLHC Conduit



1. Cut the conduit squarely using a hacksaw with a minimum of 32 teeth / inch or a Rotocut.
2. Dismantle the connector taking care not to lose any of the components.
3. Fit the compression nut and sealing ring loosely onto the conduit with the chamfered end of the seal towards the compression nut.
4. Screw the insert into the conduit bore.
5. Offer up the body onto the insert and tighten the compression nut by hand.
6. The fitting can then be rotated to aid installation into threaded entry enclosures.
7. Lock down the fitting by tightening the compression nut using spanners or grips until the blue of the sealing ring is visible between the conduit and compression nut. This will ensure that the fitting has achieved the IP67/IP68 (10bar 30mins) IP69k rating.

