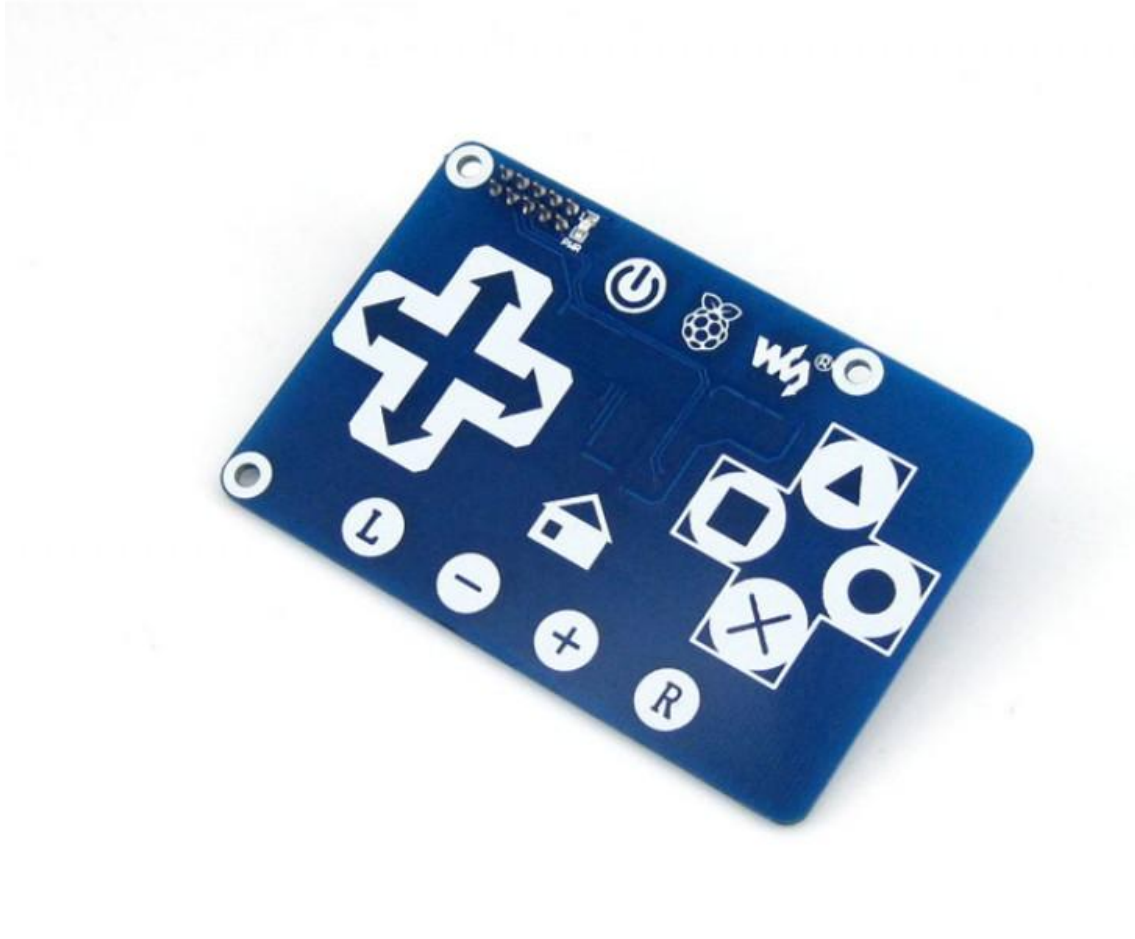


# RPi Touch Keypad



Capacitive Touch Keypad Designed for Raspberry Pi

## Features

- Supports any revision of Raspberry Pi (directly-pluggable)
- Provides your Pi with 16 touch keys
- Features TONTEK TonTouch touch pad detector IC TTP229-LSF, supports up to 16 keys with adjustable sensitivity and built-in LDO
- The system re-calibrates automatically when all keys are not detected touch more than about 4 seconds

## Specifications

- Interface : I2C

- Keys : 16
- Sampling rate : 8Hz
- Human Body Mode : 6KV
- Operating voltage : 2.4V-5.5V
- Operating temperature : -40°C to +85°C
- Storage temperature : -50°C to +125°C
- Dimensions : 8.5CM × 5.6CM

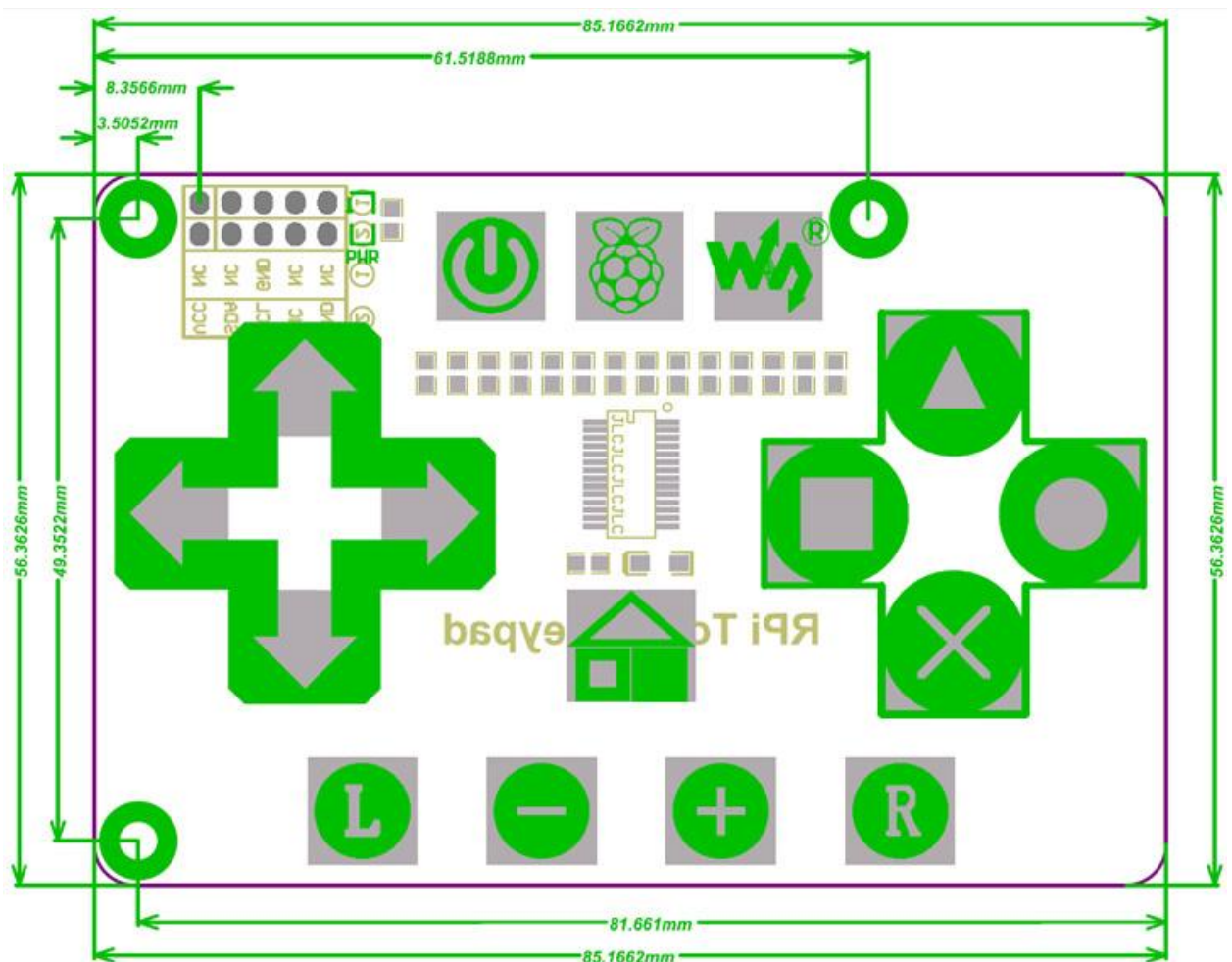
## How to Use

- After power-on have about 0.5sec stable-time. During the time do not touch the key pad, and all functions are disabled

## Pinouts

- VCC : Power supply (2.4V-5.5V)
- GND : Ground
- SDA : I2C SDA
- SCL : I2C SCL

## Dimensions



## Downloads

**Development resources:** schematic, demo code, datasheets, etc.

**Download:** [www.waveshare.com/wiki/RPi\\_Touch\\_Keypad](http://www.waveshare.com/wiki/RPi_Touch_Keypad)