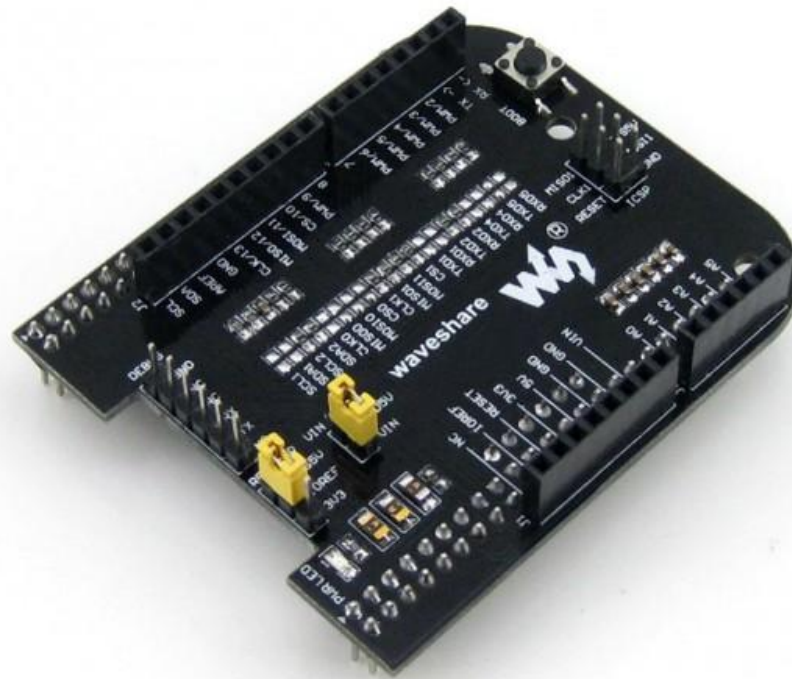
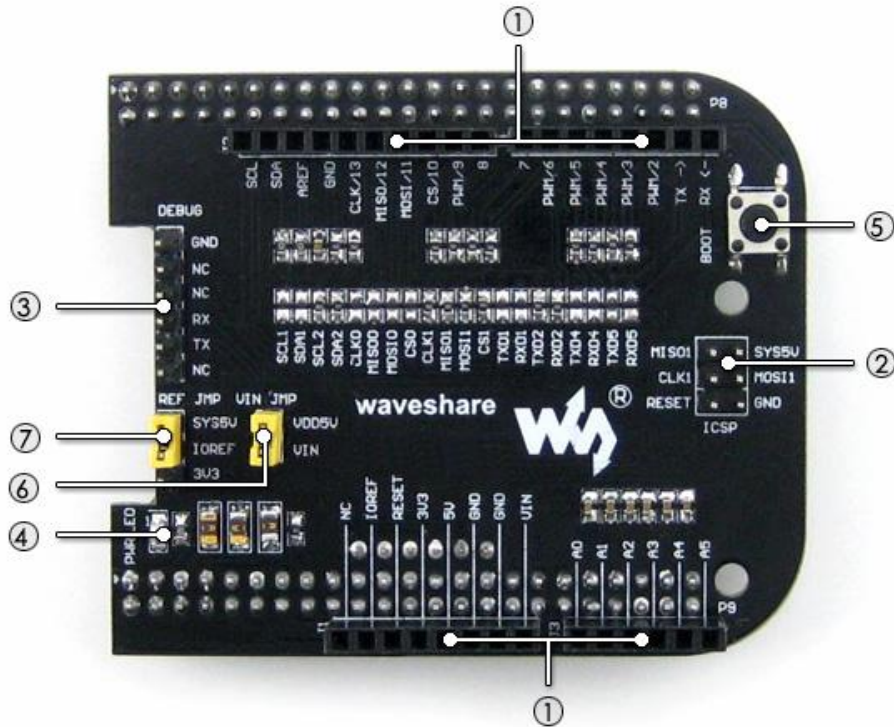


# Beaglebone Arduino Adapter



BB Black Expansion CAPE, Supports Arduino, Compatible with UNO (default) and Leonardo (by configuration)

## What's on the CAPE for Arduino



1. Arduino connector : for connecting compatible Arduino shields, such as Motor Control Shield
2. ICSP interface : for uploading Arduino programs
3. DEBUG interface : for debugging BB Black OR connected Arduino shields
4. Power indicator
5. BB Black BOOT selection button
6. VIN voltage level selection jumper : connects to VDD5V OR custom power supply
7. IOREF voltage level selection jumper : connects to SYS5V OR 3V3

## Downloads

**Development resources:** schematic, software, etc.

[www.waveshare.com/CAPE\\_for\\_Arduino](http://www.waveshare.com/CAPE_for_Arduino)