



## 2N65-LC1

Power MOSFET

### 2.0A, 650V N-CHANNEL POWER MOSFET

#### DESCRIPTION

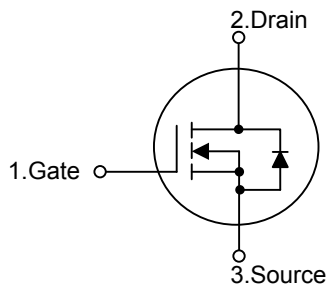
The UTC **2N65-LC1** is an N-channel power MOSFET using UTC's advanced technology to provide customers with a minimum on-state resistance and superior switching performance.

The UTC **2N65-LC1** is generally applied in low power switching mode power appliances and electronic ballast.

#### FEATURES

- \*  $R_{DS(ON)} \leq 5.5 \Omega @ V_{GS}=10V, I_D=1.0A$
- \* High Switching Speed
- \* 100% Avalanche Tested

#### SYMBOL

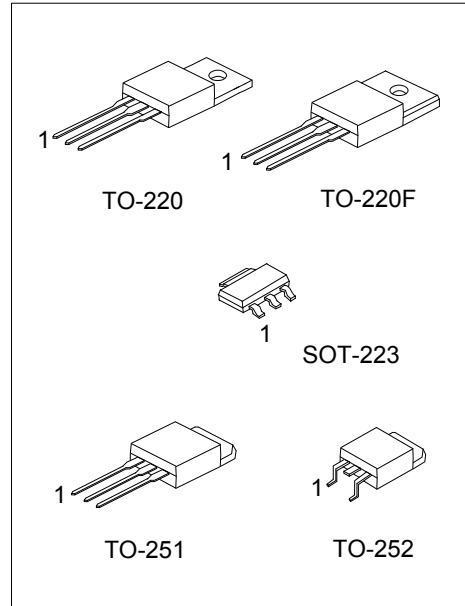


#### ORDERING INFORMATION

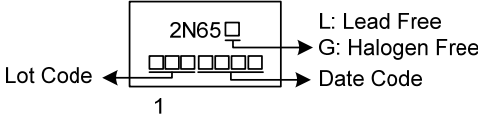
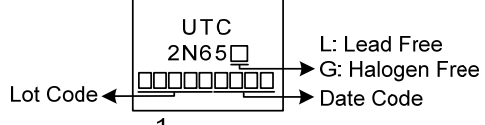
Ordering Number		Package	Pin Assignment			Packing
Lead Free	Halogen Free		1	2	3	
2N65L-AA3-R	2N65G-AA3-R	SOT-223	G	D	S	Tape Reel
2N65L-TA3-T	2N65G-TA3-T	TO-220	G	D	S	Tube
2N65L-TF3-T	2N65G-TF3-T	TO-220F	G	D	S	Tube
2N65L-TM3-T	2N65G-TM3-T	TO-251	G	D	S	Tube
2N65L-TN3-R	2N65G-TN3-R	TO-252	G	D	S	Tape Reel

Note: Pin Assignment: G: Gate D: Drain S: Source

<p>2N65G-AA3-R</p> <p>(1) Packing Type</p> <p>(2) Package Type</p> <p>(3) Green Package</p>	<p>(1) R: Tape Reel, T: Tube</p> <p>(2) AA3: SOT-223, TA3: TO-220, TF3: TO-220F</p> <p>TM3: TO-251, TN3: TO-252</p> <p>(3) G: Halogen Free and Lead Free, L: Lead Free</p>
---	--



## MARKING

SOT-223	TO-220 / TO-220F / TO-251 / TO-252
 <p>Diagram showing the marking on a SOT-223 package. The marking consists of the part number '2N65' followed by a small square symbol, a lot code (represented by five squares), and a date code (represented by four squares). The number '1' is located below the lot code. To the right of the marking, the following information is provided: 'L: Lead Free', 'G: Halogen Free', and 'Date Code'. An arrow labeled 'Lot Code' points to the lot code area.</p>	 <p>Diagram showing the marking on TO-220 / TO-220F / TO-251 / TO-252 packages. The marking consists of the manufacturer code 'UTC', the part number '2N65' followed by a small square symbol, a lot code (represented by five squares), and a date code (represented by four squares). The number '1' is located below the lot code. To the right of the marking, the following information is provided: 'L: Lead Free', 'G: Halogen Free', and 'Date Code'. An arrow labeled 'Lot Code' points to the lot code area.</p>

■ ABSOLUTE MAXIMUM RATINGS ( $T_c=25^\circ\text{C}$ , unless otherwise specified)

PARAMETER		SYMBOL	RATINGS	UNIT
Drain-Source Voltage		$V_{DSS}$	650	V
Gate-Source Voltage		$V_{GSS}$	$\pm 30$	V
Drain Current	Continuous	$I_D$	2	A
	Pulsed (Note 2)	$I_{DM}$	4	A
Avalanche Energy	Single Pulsed (Note 3)	$E_{AS}$	28.8	mJ
Peak Diode Recovery dv/dt (Note 4)		dv/dt	2.175	V/ns
Power Dissipation	SOT-223	$P_D$	3.3	W
	TO-220		54	W
	TO-220F		23	W
	TO-251/TO-252		45	W
Junction Temperature		$T_J$	+150	$^\circ\text{C}$
Storage Temperature		$T_{STG}$	-55 ~ +150	$^\circ\text{C}$

Notes: 1. Absolute maximum ratings are those values beyond which the device could be permanently damaged.

Absolute maximum ratings are stress ratings only and functional device operation is not implied.

2. Repetitive Rating: Pulse width limited by maximum junction temperature.

3.  $L = 10\text{mH}$ ,  $I_{AS} = 2.4\text{A}$ ,  $V_{DD} = 50\text{V}$ ,  $R_G = 25\Omega$ , Starting  $T_J = 25^\circ\text{C}$

4.  $I_{SD} \leq 2.0\text{A}$ ,  $di/dt \leq 200\text{A}/\mu\text{s}$ ,  $V_{DD} \leq BV_{DSS}$ , Starting  $T_J = 25^\circ\text{C}$

■ THERMAL DATA

PARAMETER		SYMBOL	RATINGS	UNIT
Junction to Ambient	SOT-223	$\theta_{JA}$	150	$^\circ\text{C}/\text{W}$
	TO-220/TO-220F		62.5	$^\circ\text{C}/\text{W}$
	TO-251/TO-252		110	$^\circ\text{C}/\text{W}$
Junction to Case	SOT-223	$\theta_{JC}$	37.8	$^\circ\text{C}/\text{W}$
	TO-220		2.31	$^\circ\text{C}/\text{W}$
	TO-220F		5.4	$^\circ\text{C}/\text{W}$
	TO-251/TO-252		2.77 (Note)	$^\circ\text{C}/\text{W}$

Note: Device mounted on FR-4 substrate  $P_c$  board, 2oz copper, with 1inch square copper plate.

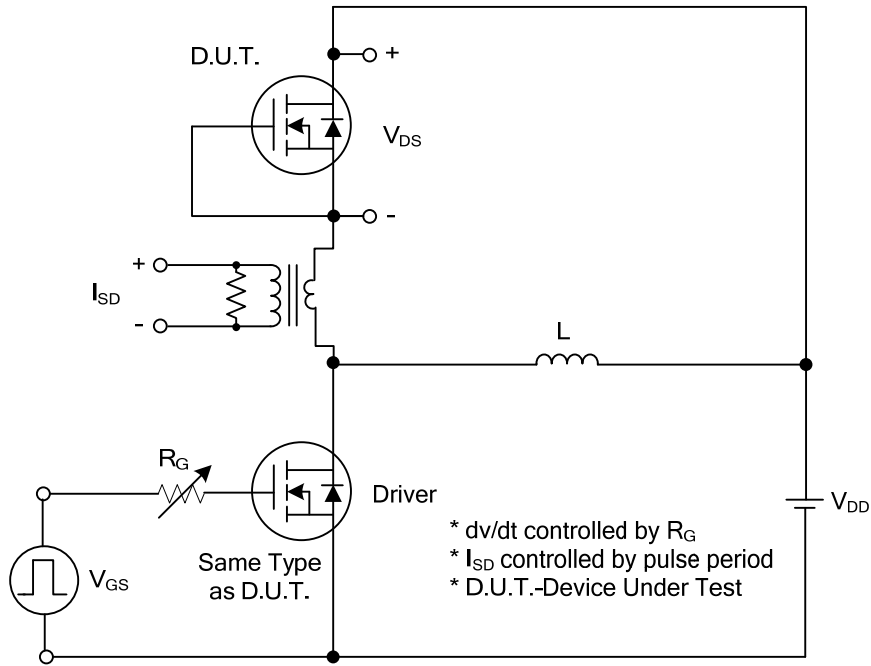
■ ELECTRICAL CHARACTERISTICS ( $T_J=25^\circ\text{C}$ , unless otherwise specified)

PARAMETER	SYMBOL	TEST CONDITIONS	MIN	TYP	MAX	UNIT
<b>OFF CHARACTERISTICS</b>						
Drain-Source Breakdown Voltage	$BV_{DSS}$	$I_D=250\mu\text{A}$ , $V_{GS}=0\text{V}$	650			V
Drain-Source Leakage Current	$I_{DSS}$	$V_{DS}=650\text{V}$ , $V_{GS}=0\text{V}$			10	$\mu\text{A}$
Gate- Source Leakage Current	Forward	$V_{GS}=+30\text{V}$ , $V_{DS}=0\text{V}$			+100	nA
	Reverse		$V_{GS}=-30\text{V}$ , $V_{DS}=0\text{V}$			-100
<b>ON CHARACTERISTICS</b>						
Gate Threshold Voltage	$V_{GS(TH)}$	$V_{DS}=V_{GS}$ , $I_D=250\mu\text{A}$	2.0		4.0	V
Static Drain-Source On-State Resistance	$R_{DS(ON)}$	$V_{GS}=10\text{V}$ , $I_D=1.0\text{A}$		4.7	5.5	$\Omega$
<b>DYNAMIC PARAMETERS</b>						
Input Capacitance	$C_{ISS}$	$V_{GS}=0\text{V}$ , $V_{DS}=25\text{V}$ , $f=1.0\text{MHz}$		263		pF
Output Capacitance	$C_{OSS}$			30		pF
Reverse Transfer Capacitance	$C_{RSS}$			2.9		pF
<b>SWITCHING PARAMETERS</b>						
Total Gate Charge (Note 1)	$Q_G$	$V_{DS}=520\text{V}$ , $V_{GS}=10\text{V}$ , $I_D=2\text{A}$ $I_G=1\text{mA}$ (Note 1, 2)		7.5		nC
Gate to Source Charge	$Q_{GS}$			2.9		nC
Gate to Drain Charge	$Q_{GD}$			1		nC
Turn-ON Delay Time (Note 1)	$t_{D(ON)}$	$V_{DD}=100\text{V}$ , $V_{GS}=10\text{V}$ , $I_D=2\text{A}$ , $R_G=25\Omega$ (Note 1, 2)		3.8		ns
Rise Time	$t_R$			15.5		ns
Turn-OFF Delay Time	$t_{D(OFF)}$			23		ns
Fall-Time	$t_F$			24.5		ns
<b>SOURCE- DRAIN DIODE RATINGS AND CHARACTERISTICS</b>						
Maximum Body-Diode Continuous Current	$I_S$				2	A
Maximum Body-Diode Pulsed Current (Note 1)	$I_{SM}$				4	A
Drain-Source Diode Forward Voltage (Note 1)	$V_{SD}$	$I_S=2\text{A}$ , $V_{GS}=0\text{V}$			1.4	V
Body Diode Reverse Recovery Time	$t_{rr}$	$I_S=2\text{A}$ , $V_{GS}=0\text{V}$ , $dI_F/dt=100\text{A}/\mu\text{s}$		280		ns
Body Diode Reverse Recovery Charge	$Q_{rr}$				0.9	

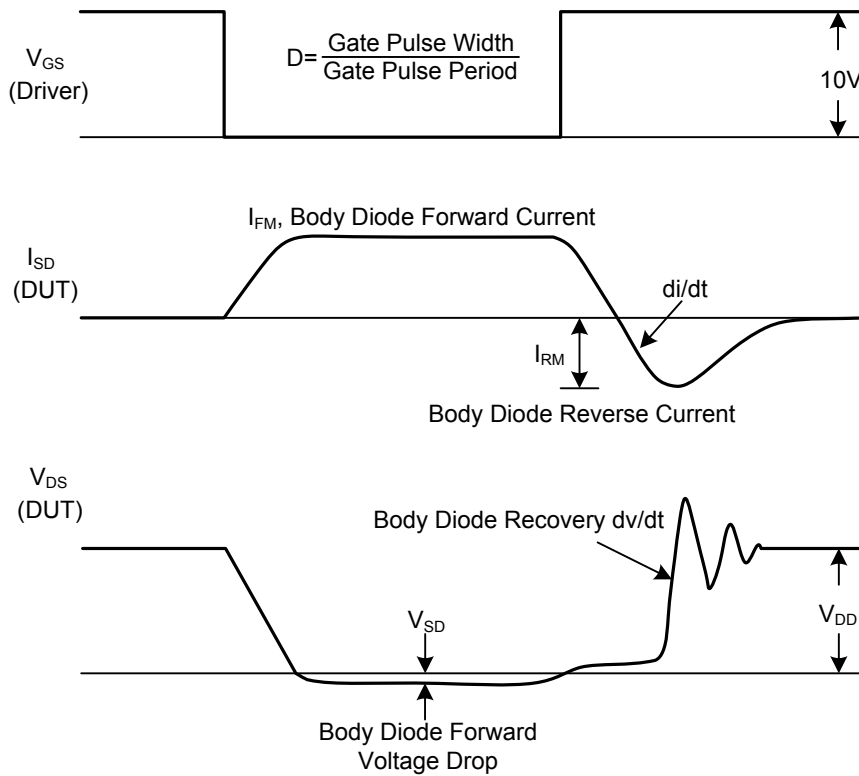
Notes: 1. Pulse Test: Pulse width  $\leq 300\mu\text{s}$ , Duty cycle  $\leq 2\%$ .

2. Essentially independent of operating temperature.

## ■ TEST CIRCUITS AND WAVEFORMS

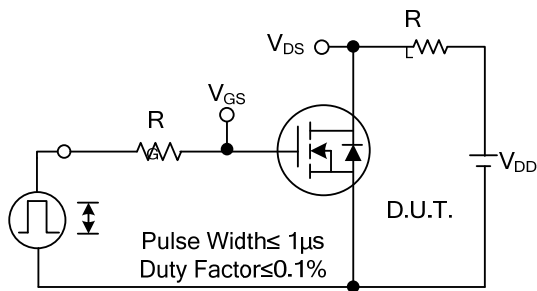


**Peak Diode Recovery dv/dt Test Circuit**

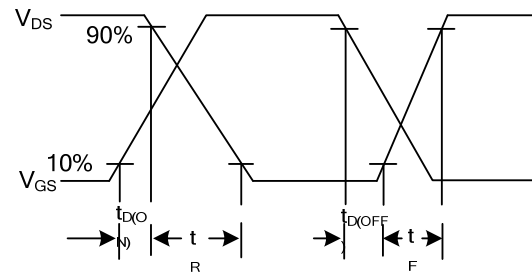


**Peak Diode Recovery dv/dt Waveforms**

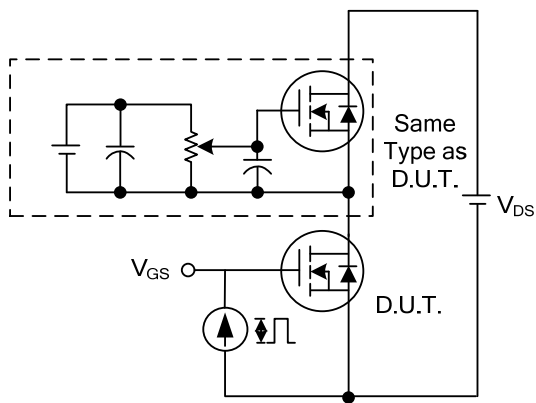
## TEST CIRCUITS AND WAVEFORMS



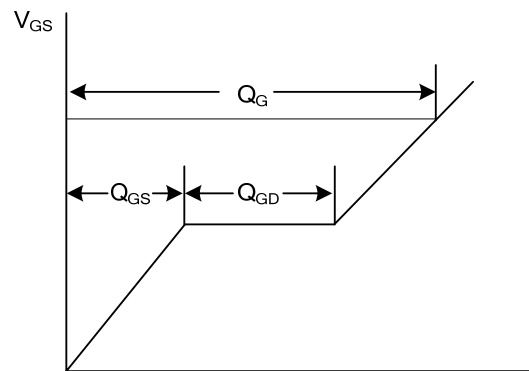
Switching Test Circuit



Switching Waveforms

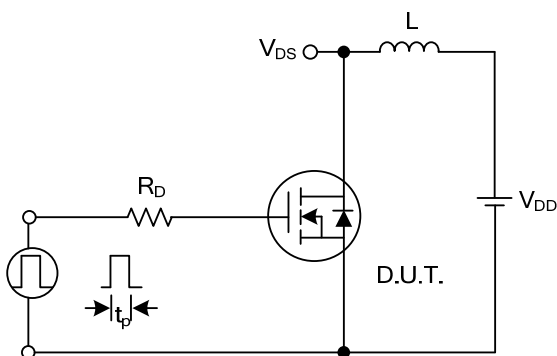


Gate Charge Test Circuit

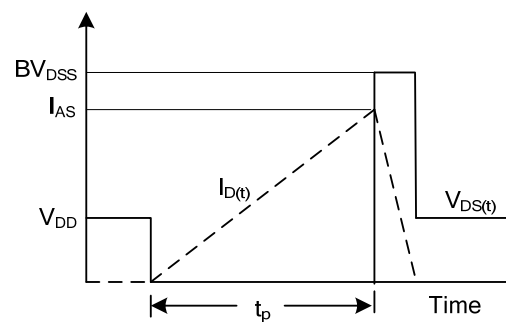


Charge

Gate Charge Waveform

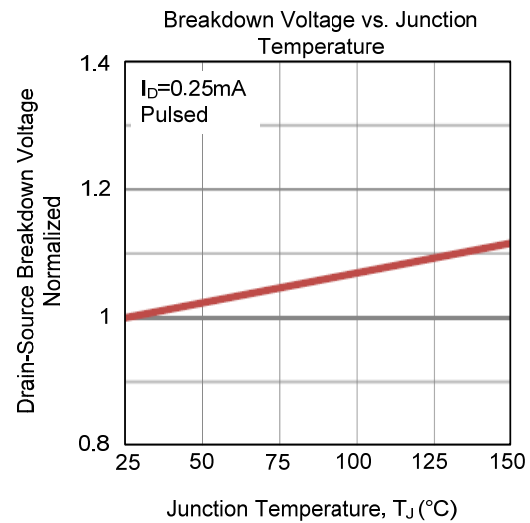
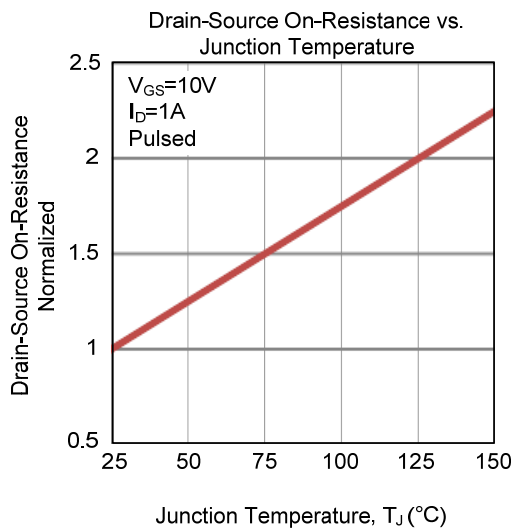
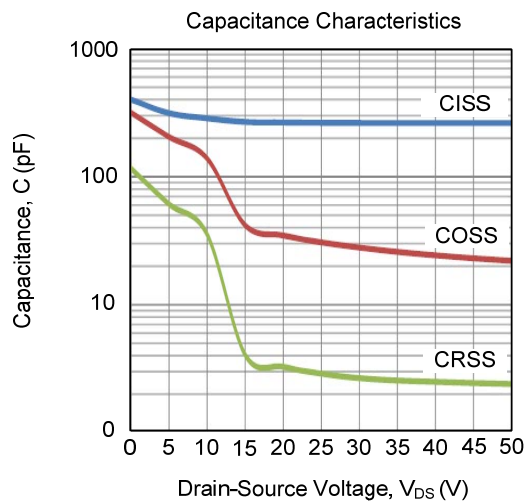
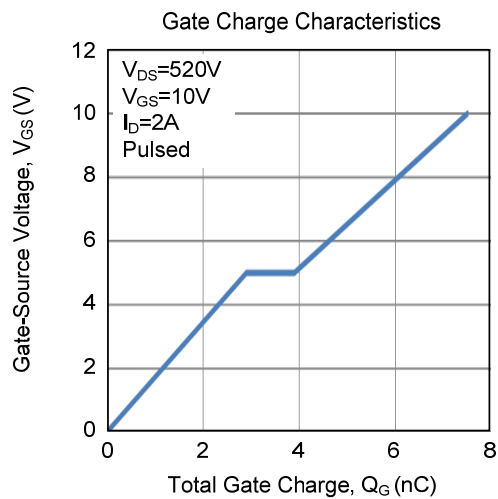
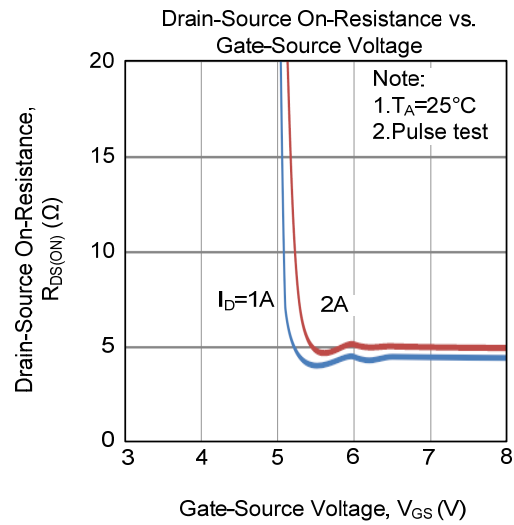
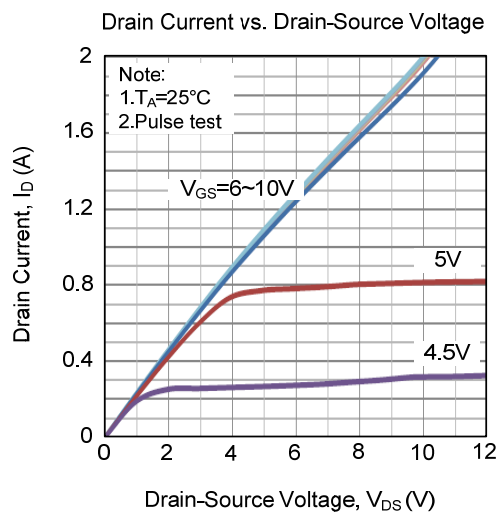


Unclamped Inductive Switching Test Circuit

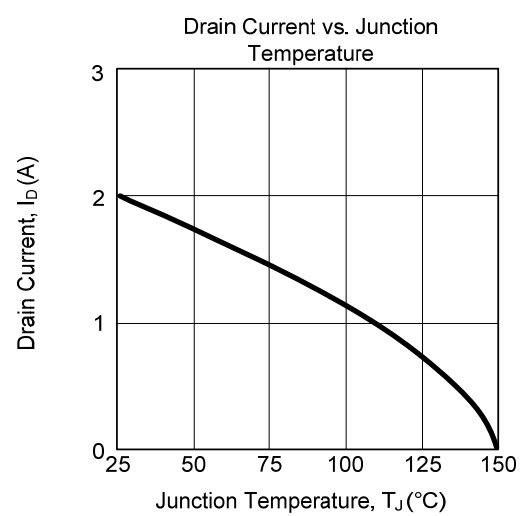
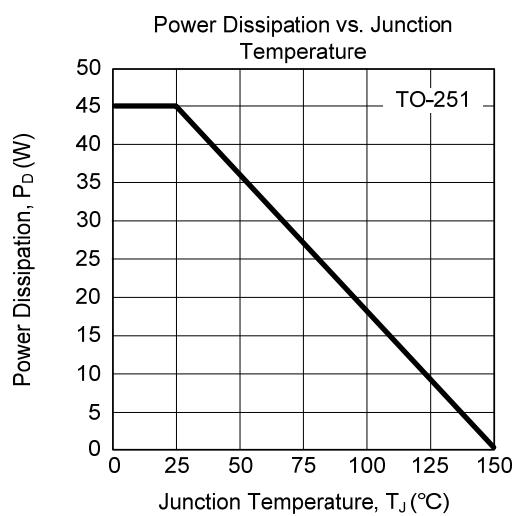
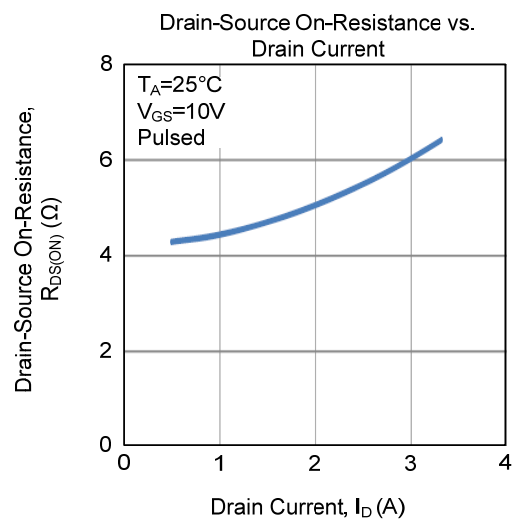
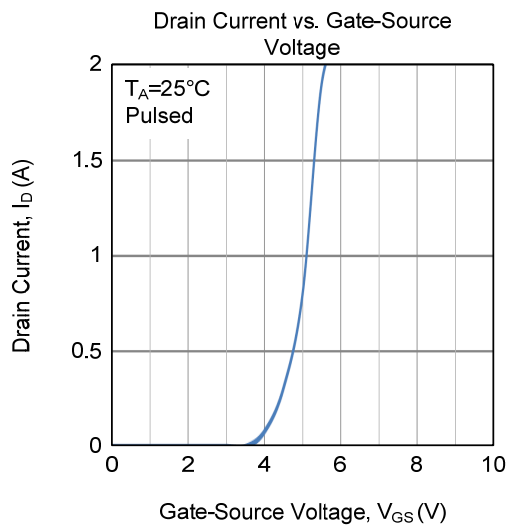
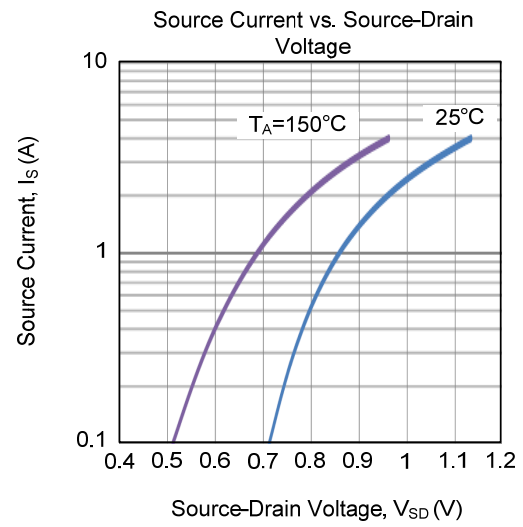
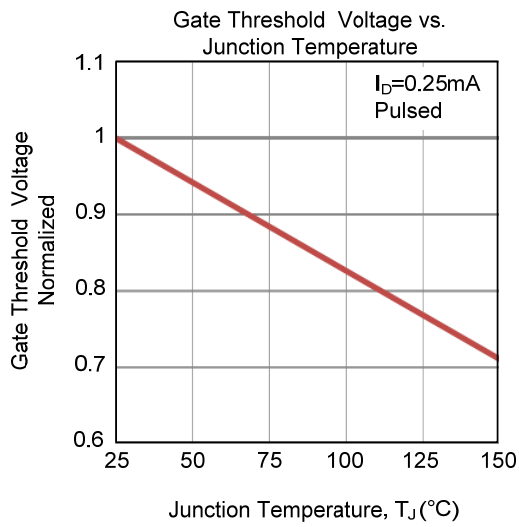


Unclamped Inductive Switching Waveforms

## TYPICAL CHARACTERISTICS

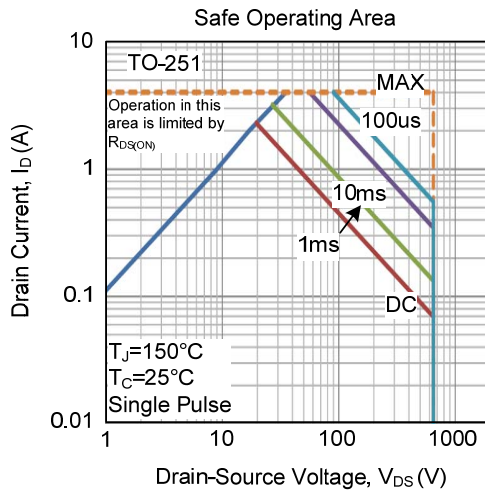


## TYPICAL CHARACTERISTICS (Cont.)





■ TYPICAL CHARACTERISTICS (Cont.)



UTC assumes no responsibility for equipment failures that result from using products at values that exceed, even momentarily, rated values (such as maximum ratings, operating condition ranges, or other parameters) listed in products specifications of any and all UTC products described or contained herein. UTC products are not designed for use in life support appliances, devices or systems where malfunction of these products can be reasonably expected to result in personal injury. Reproduction in whole or in part is prohibited without the prior written consent of the copyright owner. UTC reserves the right to make changes to information published in this document, including without limitation specifications and product descriptions, at any time and without notice. This document supersedes and replaces all information supplied prior to the publication hereof.