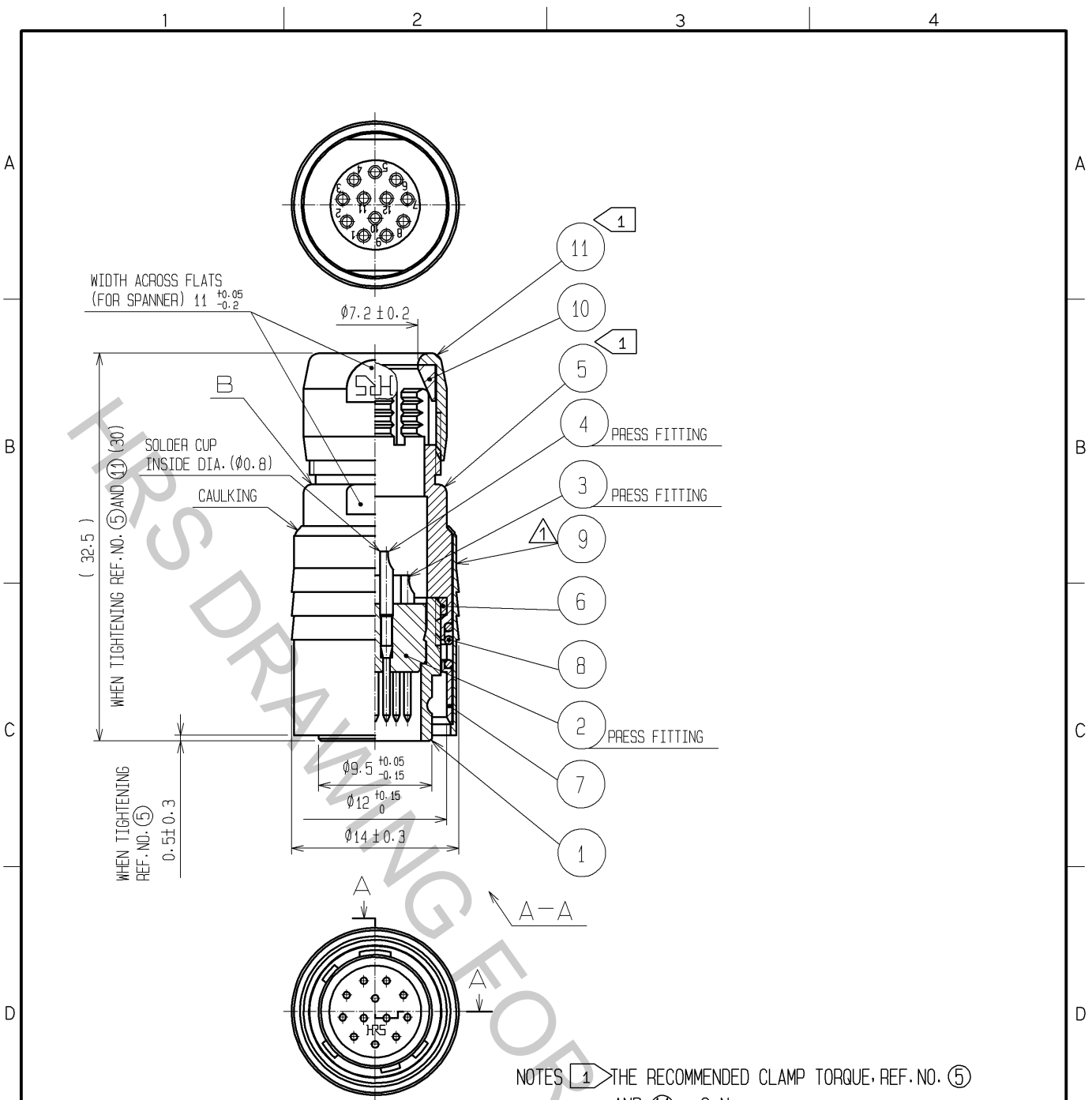


Jun. 1. 2018 Copyright 2018 HIROSE ELECTRIC CO., LTD. All Rights Reserved.
 In case of consideration for using Automotive equipment/
 device which demand high reliability, kindly contact our sales window correspondents.



NOTES ① THE RECOMMENDED CLAMP TORQUE, REF. NO. ⑤ AND ⑪ : 2 N·m.
 REF. NO. ⑪ SHALL BE TIGHTENED BY TORQUE AFTER CLAMPED UNTIL IT TOUCHES THE SURFACE B.
 2 ONE EXAMPLE OF THE ROTATION OF REF. NO. ①, ⑤ AND ⑪ ARE SHOWN.

6	POLYAMIDE				
5	BRASS	MATTE FINISH NICKEL PLATED	11	BRASS	MATTE FINISH NICKEL PLATED
4	BRASS	GOLD PLATING 0.2μm min. NICKEL UNDER PLATING 2μm min.	10	POLYAMIDE	
3	BRASS		9	BRASS	MATTE FINISH NICKEL PLATED
2	POLYAMIDE	(BLUE)	8	STEEL	NICKEL PLATING
1	ZINC ALLOY	MATTE FINISH NICKEL PLATED	7	STAINLESS STEEL	
NO.	MATERIAL	FINISH , REMARKS	NO.	MATERIAL	FINISH , REMARKS

UNITS mm		SCALE 2 : 1	COUNT 1	DESCRIPTION OF REVISIONS DIS-C-002608	DESIGNED TP. KOMATSU	CHECKED EJ. KUNII	DATE 12. 05. 29
HIROSE ELECTRIC CO., LTD. APPROVED : MO. SATOH 05. 10. 24 CHECKED : EJ. KUNII 05. 10. 21 DESIGNED : DS. MATSUNE 05. 10. 19 DRAWN : DS. MATSUNE 05. 10. 19				DRAWING NO. EDC4-007760-73 PART NO. HR10-10P-12P(73) CODE NO. CL110-0025-7-73			