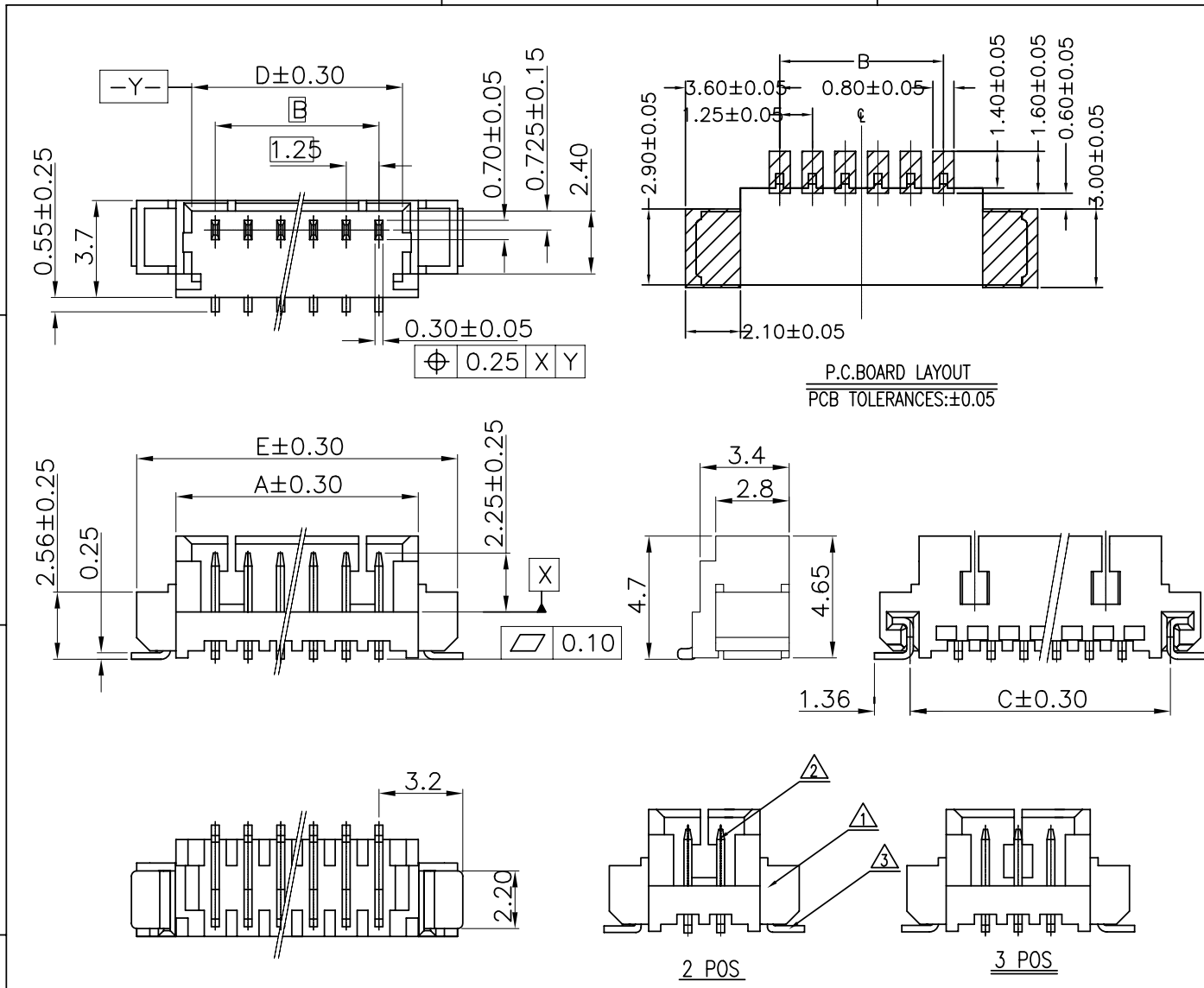




Copyright FCI.



**NOTES**

1. SPECIFICATIONS  
 Current Rating: 1A AC,DC  
 Voltage Rating: 125V AC,DC  
 Temperature Range: -40°C ~ +105°C  
 Contact Resistance: 20mΩ Max.  
 Insulation Resistance: 100MΩ Min.  
 Withstanding Voltage: 500V AC/minute

2. Material & Finish:  
 Housing: Natural Thermoplastic, UL94V-0  
 Contact and metal hold-down: Phosphor Bronze  
 Plating of contact: Matte Tin or gold plating over Nickel  
 Plating of metal hold-down: Matte Tin over Nickel

3. Crimping application hand tool P/N: 10118656-1000

4. Ordering Information & Dimensions:  
 10114828- X X X XX X LF

Material \_\_\_\_\_ LF: See note A  
 1: LCP \_\_\_\_\_ VOID/NORMAL  
 1:SEE SHEET 2(VOID 2&4 PIN)  
 Plating \_\_\_\_\_ pin counts from 02~15  
 0: Matte Tin  
 1: Gold Flash  
 3: Gold 30u"

\_\_\_\_\_ Packaging  
 1: Tape & Reel  
 2: Tape & Reel+ Cap(sheet 2)

Part No.	Dimensions					
	POS	A	B	C	D	E
10114828-xxx02LF	2	4.25	1.25±0.10	4.94	3.05	7.25
10114828-xxx03LF	3	5.50	2.50±0.10	6.19	4.30	8.50
10114828-xxx04LF	4	6.75	3.75±0.10	7.44	5.55	9.75
10114828-xxx05LF	5	8.00	5.00±0.10	8.69	6.80	11.00
10114828-xxx06LF	6	9.25	6.25±0.15	9.94	8.05	12.25
10114828-xxx07LF	7	10.50	7.50±0.15	11.19	9.30	13.50
10114828-xxx08LF	8	11.75	8.75±0.15	12.44	10.55	14.75
10114828-xxx09LF	9	13.00	10.00±0.15	13.69	11.80	16.00
10114828-xxx10LF	10	14.25	11.25±0.20	14.94	13.05	17.25
10114828-xxx11LF	11	15.50	12.50±0.20	16.19	14.30	18.50
10114828-xxx12LF	12	16.75	13.75±0.20	17.44	15.55	19.75
10114828-xxx13LF	13	18.00	15.00±0.20	18.69	16.80	21.00
10114828-xxx14LF	14	19.25	16.25±0.20	19.94	18.05	22.25
10114828-xxx15LF	15	20.50	17.50±0.20	21.19	19.30	23.50

Note A: The LF means RoHS compliance, the housing will withstand exposure to peak temperature 260 degree C for 5 sec in the IR re-flow process.

ITEM	MATERIAL	DESCRIPTION
①	THERMOPLASTIC HIGH TEMPERATURE	HOUSING
②	COPPER ALLOY	TERMINAL
③	COPPER ALLOY	HOLD DOWN

rev	ecn no	dr	date
A	T10-0145	J H	12/1/10
H	ELX-N-17075	TIM	2014/04/28
J	ELX-N-17516	TIM	2014/04/21

www.fciconnect.com		surface 6.4 ISO 1302	tolerance std ISO 406 ISO 1101	projection	MM
		TOLERANCES UNLESS OTHERWISE SPECIFIED		⊕	↔
Dr	JASON HSU	12/1/10	ANGULAR	size	Scale
Eng	JASON HSU	12/1/10	LINEAR	A4	1.000
Chr	GARY HSIEH	12/1/10	0° ±2°	ECN	
Appr	JOSEPH HSIA	12/1/10	Product family	WTB	Spec ref
FCI		title	WTB 1.25MM WAFER 180° SMT		Rev.
		catalog no	CUSTOMER		J
			sheet 1 of 2		

REV F - 2006-04-17

1

2

3

4

A

B

C

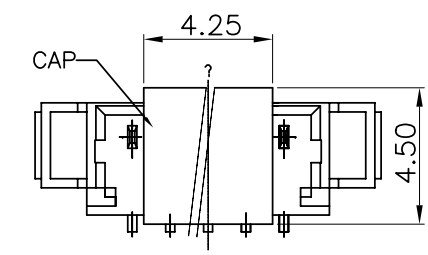
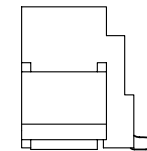
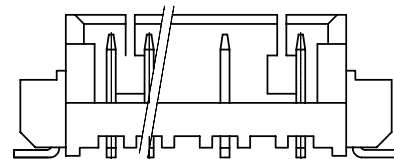
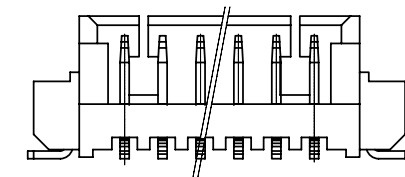
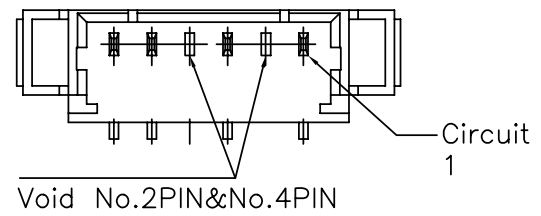
D

A

B

C

D



ASSEMBLY CAP

10114828-XXXXX1LF



Copyright FCI.

www.fciconnect.com			surface 6.4 ISO 1302	tolerance std ISO 406 ISO 1101	projection ISO 1101	MM
TOLERANCES UNLESS OTHERWISE SPECIFIED			ANGULAR	LINEAR	size A4	Scale 1.000
Dr	JASON HSU	12/1/10	0°	±2°	0.X ±0.25	ECN
Eng	JASON HSU	12/1/10	0.XX ±0.15	0.XXX -	ECN	Spec ref
Chr	GARY HSIEH	12/1/10	Product family		WTB	
Appr	JOSEPH HSIA	12/1/10	title		WTB 1.25MM WAFER 180° SMT	Rev. J
rev			ecn no		dr	date
J						
FCI			catalog no		CUSTOMER	sheet 2 of 2
dwg no			10114828			

REV F - 2006-04-17

1

2

3

4

PDS: Rev :J

STATUS:Released

Printed: Apr 25, 2014

# Mouser Electronics

Authorized Distributor

Click to View Pricing, Inventory, Delivery & Lifecycle Information:

## [FCI / Amphenol:](#)

[10114828-10102LF](#) [10114828-10103LF](#) [10114828-10104LF](#) [10114828-10106LF](#) [10114828-10105LF](#) [10114828-10107LF](#) [10114828-10108LF](#) [10114828-10109LF](#) [10114828-10110LF](#) [10114828-10111LF](#) [10114828-10112LF](#) [10114828-10113LF](#) [10114828-10114LF](#) [10114828-10115LF](#) [10114828-11102LF](#) [10114828-11103LF](#) [10114828-11104LF](#) [10114828-11105LF](#) [10114828-11106LF](#) [10114828-11107LF](#) [10114828-11108LF](#) [10114828-11109LF](#) [10114828-11110LF](#) [10114828-11111LF](#) [10114828-11112LF](#) [10114828-11113LF](#) [10114828-11114LF](#) [10114828-11115LF](#) [10114828-13104LF](#) [10114828-101041LF](#) [10114828-101042LF](#) [10114828-101061LF](#) [10114828-111061LF](#) [10114828-13102LF](#) [10114828-11210LF](#) [10114828-11202LF](#) [10114828-11205LF](#) [10114828-13202LF](#) [10114828-10206LF](#) [10114828-10204LF](#) [10114828-13108LF](#) [10114828-11214LF](#) [10114828-10207LF](#) [10114828-131061LF](#) [10114828-10214LF](#) [10114828-11215LF](#) [10114828-101071LF](#) [10114828-111071LF](#) [10114828-10202LF](#) [10114828-13203LF](#) [10114828-13105LF](#) [10114828-10203LF](#) [10114828-10205LF](#) [10114828-10208LF](#) [10114828-13103LF](#) [10114828-10210LF](#) [10114828-13112LF](#) [10114828-11208LF](#) [10114828-13106LF](#) [10114828-10212LF](#) [10114828-11203LF](#)