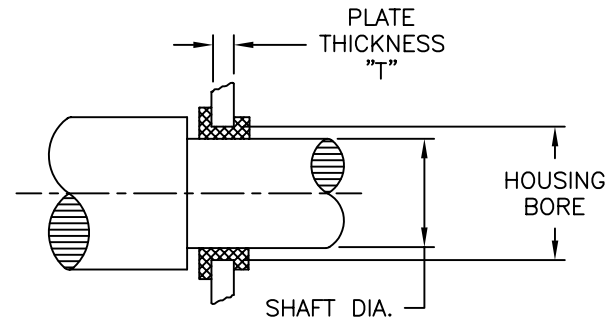
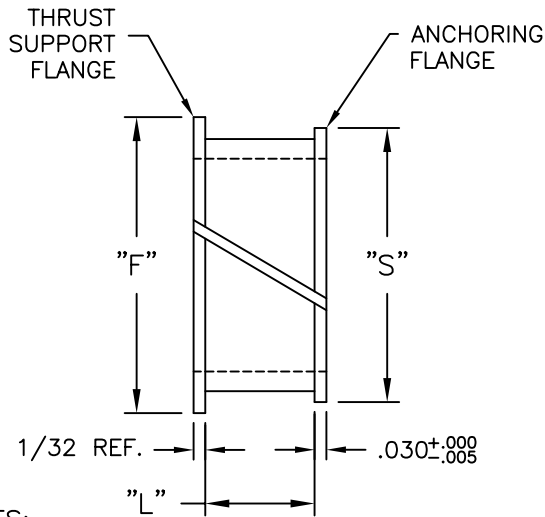


| BEARING NUMBER | MAXIMUM SHAFT DIA. | *MINIMUM HOUSING BORE | BEARING I.D.**<br>+.003<br>-.000 | FLANGE DIAMETER<br>±1/64 |       | BEARING LENGTH<br>"L" +1/64<br>-.000 | RECOMMENDED PLATE THICKNESS<br>"T" |
|----------------|--------------------|-----------------------|----------------------------------|--------------------------|-------|--------------------------------------|------------------------------------|
|                |                    |                       |                                  | "F"                      | "S"   |                                      |                                    |
| R3L1-C         | .1875              | .2343                 | .1885                            | 5/16                     | 1/4   | .078                                 | .040 TO .075                       |
| R3L2-C         |                    |                       |                                  |                          |       | .140                                 | .072 TO .135                       |
| R4L1-C         | .250               | .3125                 | .2510                            | 7/16                     | 11/32 | .078                                 | .040 TO .075                       |
| R5L1-C         | .3125              | .3750                 | .3135                            | 1/2                      | 13/32 | .078                                 | .040 TO .075                       |
| R6L2-C         | .375               | .4375                 | .3760                            | 9/16                     | 15/32 | .140                                 | .072 TO .135                       |
| R12L1-C        | .750               | .8125                 | .7510                            | 1                        | 27/32 | .078                                 | .040 TO .075                       |

\* THE MINIMUM CLEARANCE FOR MODEL "C" SNAP-IN BEARINGS IS .001". HOWEVER, SNAP IN BEARINGS CAN BE USED WITH SHAFT DIAMETERS A FEW THOUSANDS LARGER OR SMALLER THAN SHOWN IF HOUSING BORE IS VARIED A CORRESPONDING AMOUNT.

\*\* WHEN INSTALLED IN HOUSING BORE DIAMETER SHOWN.



NOTES:

1. MATERIAL: NYLON 6/6 (RMS-48).
2. COLOR: WHITE.
3. MAX. CONTINUOUS NON-LUBRICATED OPERATION: 500 RPM.

|   |  |                  |  |               |           |       |            |
|---|--|------------------|--|---------------|-----------|-------|------------|
| TITLE: MODEL C: SNAP-IN BEARING   |  |                  |  | DWG IN INCHES |           | FINAL |            |
| TOLERANCES UNLESS NOTED<br>.XX=±.010<br>.XXX=±.005<br>FRAC=±1/64<br>ANG=±1° |  | FILE # RXLX-C    | DWN: P.B.  | APP:          | PART #    |       | PRINT TYPE |
| I SEE ECN #936 FOR CHANGES SK 02.03.05                                      |  | MAT'L: SEE NOTES | DT: 05-05-94   | DT:           | SEE TABLE |       | CA         |
| H SEE ECN #892 FOR CHANGES SM 12.14.04                                      |  | RE: RICHCO, INC. | RICHCO INC.<br>PO BOX 804238, CHICAGO, 60680<br>(773) 539-4060 |               |           |       |            |
| REV DESCRIPTION ENGR DATE   |  |                  |  |               |           |       |            |

# Mouser Electronics

Authorized Distributor

Click to View Pricing, Inventory, Delivery & Lifecycle Information:

[Essentra:](#)

[R3L2-C](#)