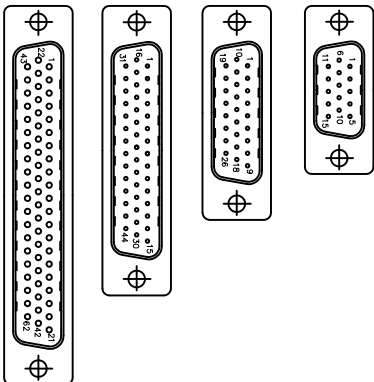
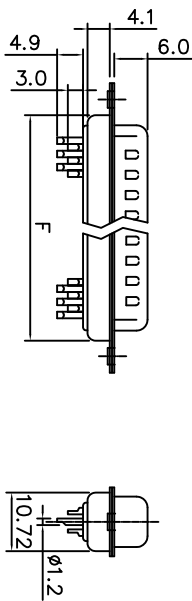
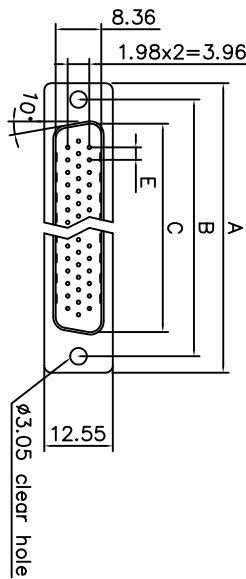
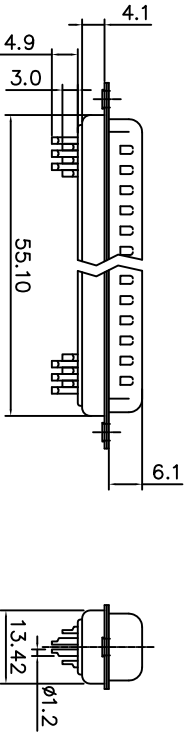
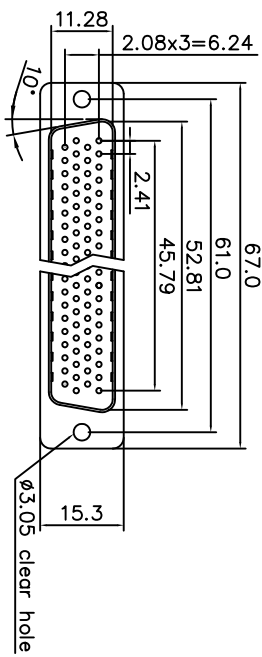


This document is the property of Amphenol Corporation and is delivered on the understanding that it is for the exclusive use of the customer. It is not to be reproduced, stored in a retrieval system, or transmitted in any form or by any means, electronic, mechanical, photocopying, recording, or by any information storage and retrieval system, without the prior consent, in writing, of Amphenol Corporation. If you have any questions, please contact your Amphenol representative. For more information, visit [www.amphenol.com](http://www.amphenol.com).

# Customer drawing



Positions	A	B	C	E	F
15	30.81	24.99	16.92	2.29	19.20
26	39.20	33.30	25.25	2.29	27.70
44	53.04	47.04	38.96	2.29	41.10
62	69.40	63.50	55.42	2.41	57.30



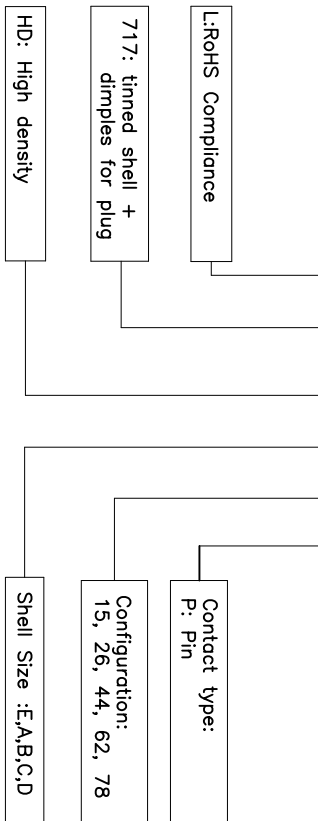
REVISITONS				
SN	EDN	DESCRIPTION	DATE	APPROVED
2	HK--	Add the dimension	08/14/09	IP
3	HK--	Add the wire size	09/28/11	IP
4	HK--	Updated the wire size	10/13/11	IP
5	HK--	Change dim. 30.84 to 30.81mm	08/27/13	IP
6	HK--	Add pin number	08/31/17	IP

## D-SUB TECHNICAL DATA

**SHELL :** Steel, 100u" min Tin over 50u" min nickel over 50u" min Copper  
**BODY :** Glass-Filled Thermoplastic PBT, UL94V-0, color black  
**CONTACTS :** Copper alloy  
 Gold flash over 50u" min nickel on mating area  
 100u" min tin over 50u" min nickel on solder area  
**ELECTRICAL :** Voltage rating 250 VAC/RMS  
 Current Rating : 3 AMP  
 Withstanding Voltage >1000 VAC/RMS  
 Insulation resistance >1000 M Ohms  
 Contact resistance 20 mOhms max  
**MARKING :** Amphenol... (Series No.)  
 Commercial reference  
 Manufacturing date

## PRODUCT CODE

L 717 HD X XX P



DIMENSIONAL SPECIFICATIONS		APPROVAL		DATE	
TOLERANCES	D.S.	DRAWN	Simon Chan	08/28/11	
ASSEMBLY		CHECKED	Thong Tong	08/28/11	
FINISHES		APPROVED			
ANGLES	5°				
FOR MATERIALS AND FINISHES REMOVE SHARP EDGES					
DIMENSIONS IN INCHES					
DIMENSIONS IN MM					
ANGLE OF PROJECTION					
TITLE					
D-Sub connector, HD Solder type					
SIZE		DRAWING NO.		REV.	
A4		L717HDXXXP		6	
SCALE		NONE		SHEET 1 OF 1	