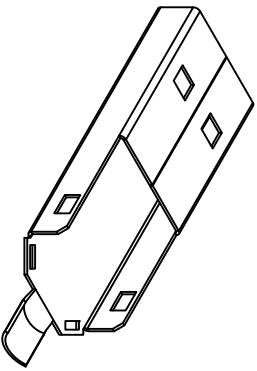
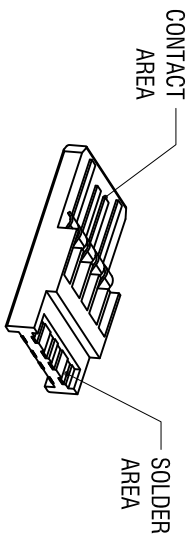


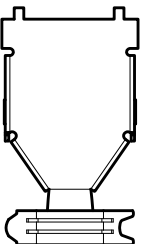
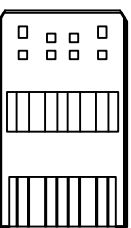
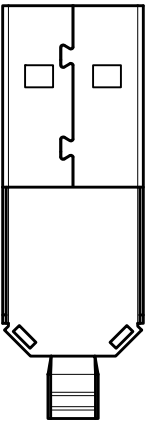
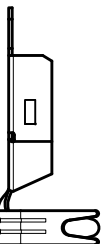
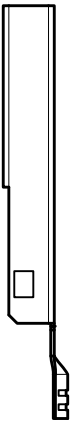
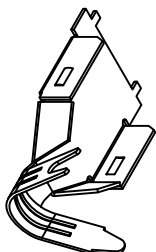
FRONT SHELL



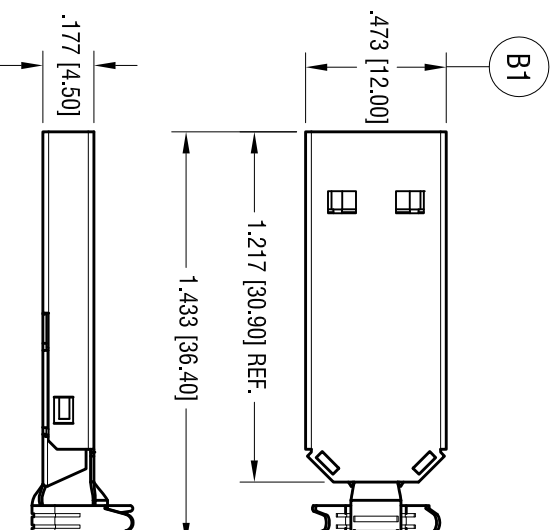
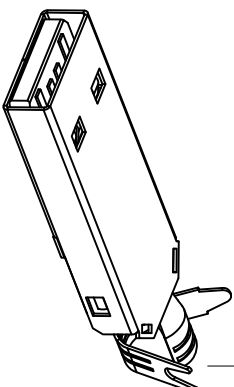
INSERTED BODY



REAR SHELL



ASSEMBLED PLUG



PLUG SPECIFICATIONS:

- SHELL: MAT'L- STEEL
- FINISH- NICKEL PLATE
- INSULATION: MAT'L- THERMOPLASTIC, UL 94V-0 (COLOR- BLUE)
- CONTACT: MAT'L- PHOSPHOR BRONZE ON SOLDER AREA
- FINISH- TIN PLATE, OVER NICKEL ON CONTACT AREA
- FINISH- GOLD FLASH OVER NICKEL

ELECTRICAL CHARACTERISTICS:

- RATED VOLTAGE: 30V (RMS)
- CONTACT CURRENT RATING: 1 Amp DC MAX.
- CONTACT RESISTANCE: 15m Ω min.
- DIELECTRIC WITHSTANDING VOLTAGE: 750V AC FOR 1 MINUTE
- MECHANICAL CHARACTERISTICS:
- OPERATING TEMPERATURE: -13°F (-25°C) TO 176°F (+80°C)
- DURABILITY: 1500 CYCLES MIN.

THIS DOCUMENT IS THE PROPERTY OF KEYSTONE ELECTRONICS CORP. AND SHALL NOT BE REPRODUCED, DISTRIBUTED OR USED AS A BASIS FOR MANUFACTURE WITHOUT PRIOR WRITTEN PERMISSION FROM KEYSTONE ELECTRONICS CORP.

DATE	DESCRIPTION	REV.
7.18.14	CHANGE AS OER ECN 14-066 SPLIT C/M DRAWING TO 'C' & 'M'	A
8.02.19	CHANGE AS PER ECN 19-063 B) WAS 12.40mm	B

KEYSTONE ELECTRONICS CORP.			
www.keystonelco.com • NEW HYDE PARK, NY 11040 • Tel (516) 328-7500			
PART NAME		USB 3.0 TYPE A PLUG KIT	
MATERIAL		AS NOTED	
FINISH		AS NOTED	
TOLERANCES	INCH	[MM]	CODE
DECIMAL	± .010	[± 0.25]	C
ANGULAR	± 1°		
UNLESS OTHERWISE SPECIFIED			
DRN BY	DATE	APP'D	SCALE
NT	4.07.10	RH	1.5X
DWG NO.		947	

Mouser Electronics

Authorized Distributor

Click to View Pricing, Inventory, Delivery & Lifecycle Information:

[Keystone Electronics:](#)

[947](#)