

SG IRON PIPELINE Y STRAINERS IS 16

DESCRIPTION

IS 16 SG iron strainers are applicable to all types of steam, water, oil and air systems.

Their purpose is to protect traps, regulating valves, piping, etc. from dirt which are often times the cause of damage and consequently energy loss of fluid systems.

Connections are female screwed.

OPTIONS: Different screen aperture sizes
Drain plug or drain valve in strainer cap

USE: Saturated steam, water, oil, air and other compatible fluids.

AVAILABLE MODELS: IS 16

SIZES: DN ½" to DN 2"

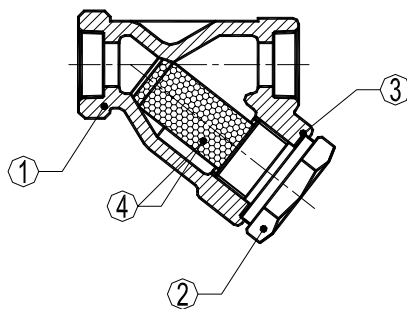
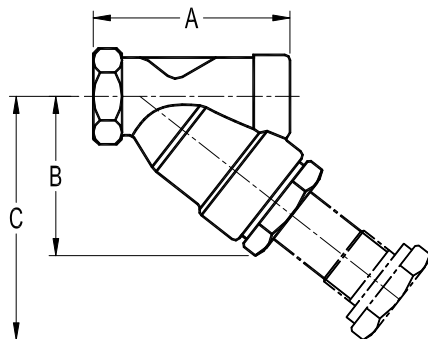
SCREENS: 0,5 mm aperture

CONNECTIONS: Female screwed ISO 7/1 Rp (BS21)

INSTALLATION: Horizontal or vertical downstream installation.
See IMI, installation and maintenance instructions.

PMA – Max. allowable pressure	25 bar
TMA – Max. allowable temperature	350 °C
PMO – Max. operating pressure	17 bar
TMO – Max. operating temperature	220 °C

How to order: i.e. IS16 DN 1½" BSP.



CE MARKING (PED - European Directive 97/23/EC)	
PN 25	Category
DN 15 to DN 40	SEP - art. 3, paragraph 3
DN 50	1 (CE Marked)

DIMENSIONS (mm)				
SIZE DN	A	B	C	WGT. Kgs
1/2"	82	52	77	0,6
3/4"	100	70	100	1
1"	115	76	121	1,5
1 1/4"	140	107	132	2,5
1 1/2"	157	121	176	3,6
2"	198	198	258	5,7

MATERIALS		
POS. Nr.	DESIGNATION	MATERIAL
1	Body	GJS-400-18-LT / 0.7033
2	Cap	GJS-400-18-LT / 0.7033
3	* Gasket	St. Steel / Graphite
4	* Strainer screen	AISI304 / 1.4301

* Available spare parts

FORGED STEEL PIPELINE Y STRAINERS IS 116

DESCRIPTION

IS 116 Y forged steel strainers are applicable to all types of steam, water, oil and air systems. Their purpose is to protect traps, regulating valves, piping, etc. from dirt which are often times the cause of damage and consequently energy loss of fluid systems. Connections are female screwed or flanged.

OPTIONS: Different screen aperture sizes
Drain plug or drain valve in strainer cap

USE: Saturated steam, water, oil, air and other compatible fluids.

AVAILABLE MODELS: IS 116

SIZES: DN ½" to DN 2" ; DN 15 to DN50

SCREENS: 0,8 mm aperture

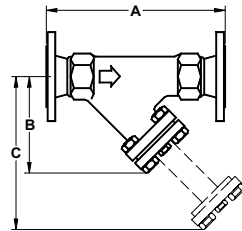
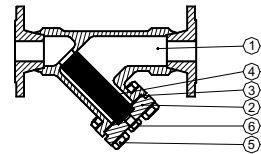
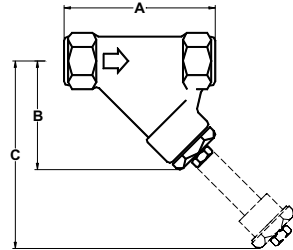
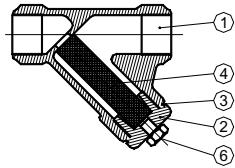
CONNECTIONS: Female screwed ISO 7/1 Rp (BS21)
NPT (ANSI B1.20.1)
Flanged EN 1092-1 or ANSI

INSTALLATION: Horizontal or vertical downstream installation.
See IMI, installation and maintenance instructions.

PMA – Max. allowable pressure 63 bar
TMA – Max. allowable temperature 400 °C
How to order: i.e. IS116 DN 1½" NPT

CE MARKING (PED - European Directive 97/23/EC)	
PN 63	Category
DN 15 to DN 32	SEP - art. 3, paragraph3
DN 40-50	1 (CE Marked)

DIMENSIONS (mm)-Screwed					EN 1092-1 Flanges	
SIZE DN	A	B	C	WGT. Kgs	A	WGT. Kgs
15	90	60	105	1	150	2,6
20	110	75	140	1,2	170	3,5
25	130	93	155	2	200	4,6
32	160	120	195	4,5	240	8,3
40	160	120	195	4,5	240	9,5
50	160	145	280	6	245	12



MATERIALS		
POS. Nr.	DESIGNATION	MATERIAL
1	Body	ASTM A105 / 1.0432
2	Cap	ASTM A105 / 1.0432
3	* Gasket	St. Steel / Graphite
4	* Strainer screen	AISI304 / 1.4301
5	Bolts	ASTM A193 B7 / A194 2H
6	Drain plug	ASTM A105 / 1.0432

* Available spare parts (Bolted cover, DN2" only)