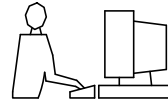
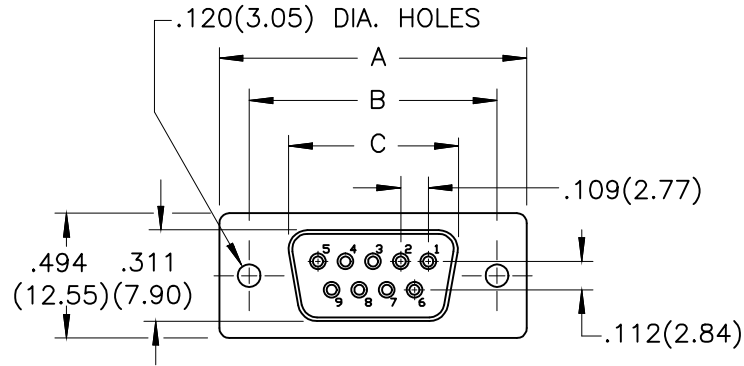


THIS IS A C.A.D. GENERATED DRAWING
DO NOT MAKE MANUAL REVISIONS TO MASTER.



* UNLESS OTHERWISE SPECIFIED TOLERANCES
ON DECIMAL IS:

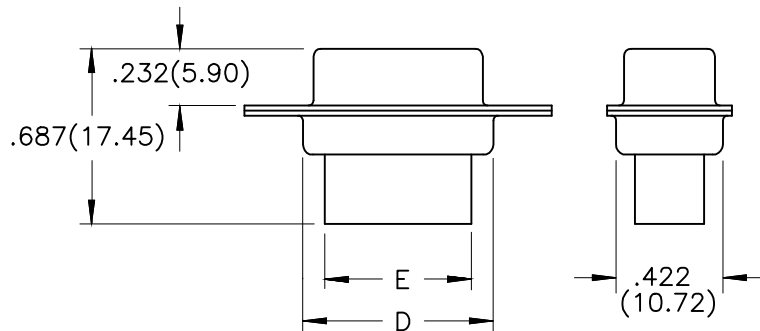


1. MATERIALS:

- 1.1 INSULATOR: PBT+30%G/F, UL 94V-0
COLOR: WHITE
- 1.2 SHELL: SPCC, NICKEL PLATED
FRONT: NICKEL PLATING, BACK: TIN PLATING

2. ELECTRICAL:

- 2.1 VOLTAGE RATING: 250V
- 2.2 CURRENT RATING: 3 AMPERES
- 2.3 DIELECTRIC WITHSTANDING VOLTAGE: 500VAC MIN
- 2.4 INSULATION RESISTANCE: 1000 MEGOHMS MIN.
- 2.5 WORKING TEMPERATURE: -55° TO +105°C



ORDER INFORMATION	PART NUMBER	DIMENSION(MM)					
		SIZE	A±.010(0.25)	B±.010(0.25)	C±.010(0.25)	D±.010(0.25)	E±.010(0.25)
	MHDBC09-SS-NW	9	1.213(30.81)	.984(24.99)	.643(16.33)	.759(19.28)	.610(15.50)
	MHDBC15-SS-NW	15	1.545(39.25)	1.312(33.32)	.971(24.66)	1.085(27.55)	.945(24.00)
	MHDBC25-SS-NW	25	2.088(53.05)	1.852(47.04)	1.511(38.38)	1.624(41.25)	1.496(38.00)
	MHDBC37-SS-NW	37	2.732(69.40)	2.500(63.50)	2.159(54.85)	2.260(57.40)	2.134(54.20)



THIS SERIES FULLY CONFORMS TO THE
EUROPEAN UNION DIRECTIVES 2002/95/EC
AND 2002/96/EC FOR RoHS COMPLIANCY.



MH CONNECTORS LTD.

THESE DRAWINGS AND SPECIFICATIONS ARE THE
PROPERTY OF MH CONNECTORS LTD. AND SHALL NOT
BE REPRODUCED, COPIED OR USED AS THE BASIS FOR
THE MANUFACTURE OR SALE OF APPARATUS WITHOUT
WRITTEN PERMISSION.

DRAWN HALEY		DATE 06-27-14	
APPROVED		DATE	
SCALE	SHEET OF 1 OF 1	REV: 1.0	
DRAWING No MHDBCXX-SS-NW			