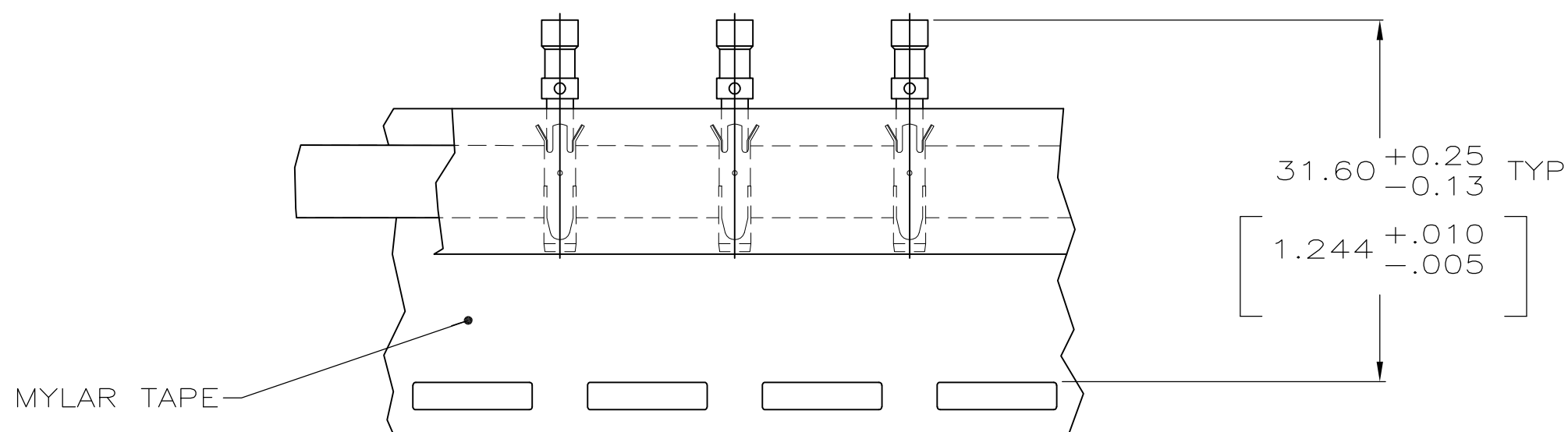
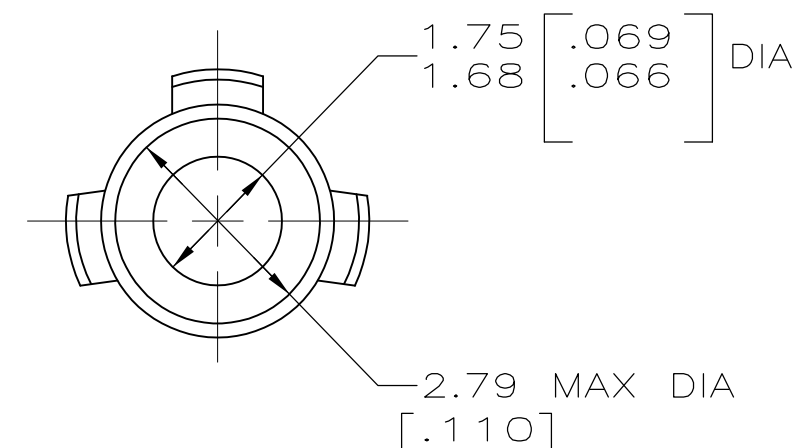
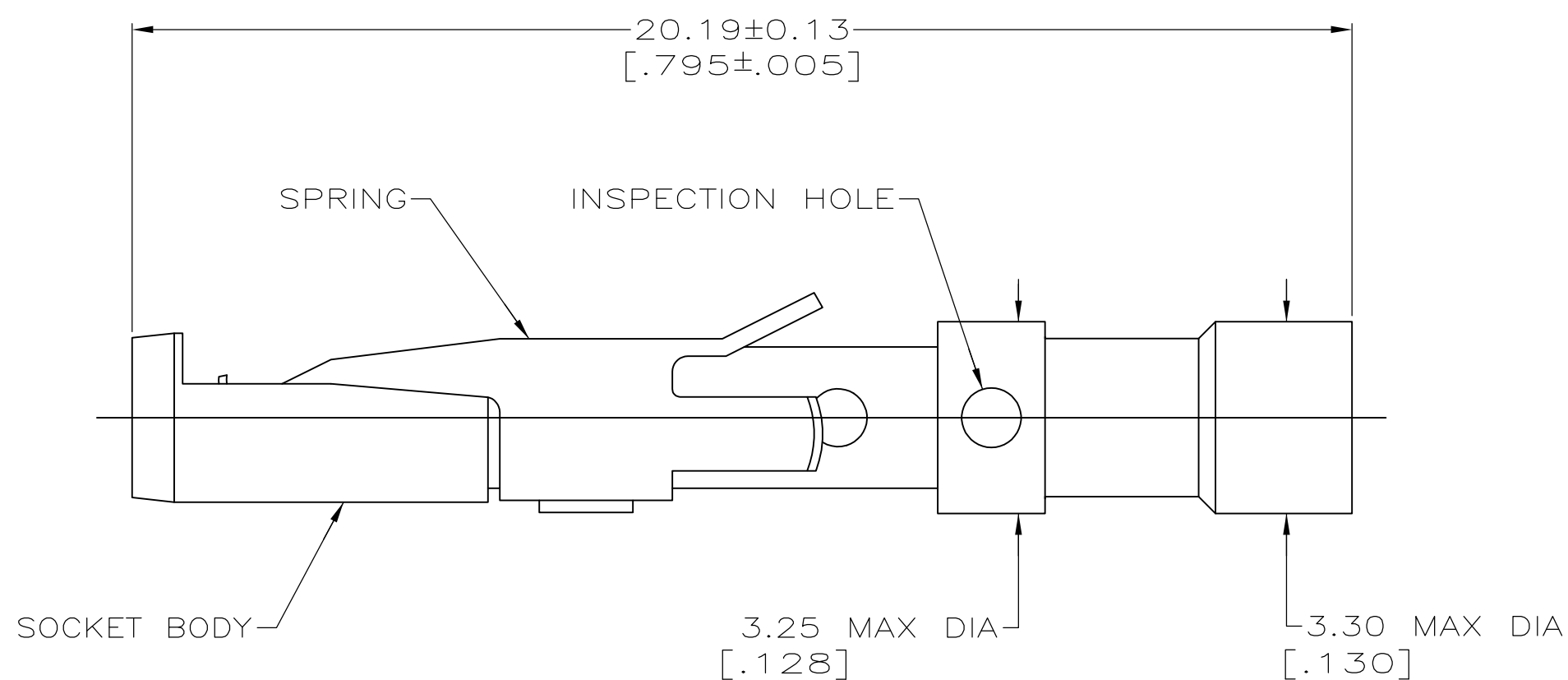
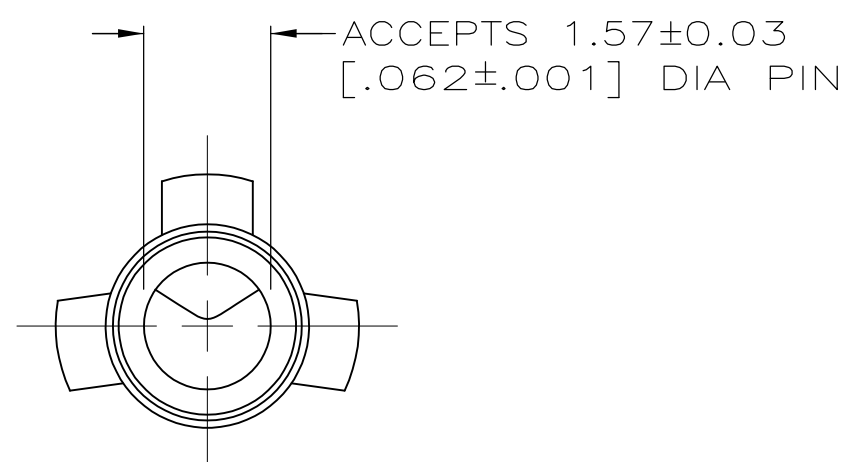


P		F		ZONE		LTR		REVISIONS		DATE	APPD
								E	ADDED -3 PER NPR 4680 AND REDRAWN ON CAD	04/07/93	-
								E1	REVISED PER ECO-09-020935	09SEP09	KK AEG



TAPE MTG DETAIL
SCALE 2:1

- 1. 0.76µm [.000030] MIN GOLD OVER 1.27µm [.000050] MIN NICKEL.
- 2. PLATING THICKNESS TO BE MEASURED ON SURFACES ACCESSIBLE WITH 0.64 [.025] DIA SPHERE.
- 3. WHEN ORDERING CONTACT ASSEMBLY ON TAPE, ORDER BY THE TAPE NUMBER PLUS THE PACKAGING CODE AS FOLLOWS:
 - 1. FOR USE WITH AMP TAPETRONIC, PNEUMATIC TOOL-
 - A. 1000 PARTS TO A BOX ADD PACKAGING CODE: 1MBOX
 - 2. FOR USE WITH 4/8 INDENT STRIPPER CRIMPER-
 - A. 1000 PARTS TO A REEL ADD PACKAGING CODE: 1MREEL
 - B. 5000 PARTS TO A REEL ADD PACKAGING CODE: 5MREEL
- 4. OBSOLETE PARTS: OBSOLETE CIS STREAMLINING PER D.RENAUD/D.SINISI

4	OBSOLETE	SMALL PACK	202508-3
4	OBSOLETE	TAPE MTG (SEE DETAIL) 3	202508-2
		STANDARD	202508-1

PACKAGING TYPE		PART NO		
DO NOT SCALE PRINT. UNLESS SPECIFIED DIMENSIONS IN mm [INCHES] TOLERANCES ON :	DR 04/07/93 D.GELTZ	AMP Incorporated Harrisburg, PA 17105-3608		
2 PLC DEC ± -	CHK 4-26-93 R.STONE			
3 PLC DEC ± -	APPD 4-29-93 R.S.KLINE	NAME		
ANGLES ± -	APPD -	CONTACT ASSEMBLY, SOCKET, #16, 16-18 AWG, TYPE II		
MATERIAL	PRODUCT SPEC -			
SOCKET BODY: COPPER ALLOY	APPLICATION SPEC -	SIZE	CAGE CODE	DRAWING NO
SPRING: STAINLESS STEEL	FINISH	C	00779	C-202508
SOCKET BODY: 4	WEIGHT -	SCALE	10:1	SHEET 1 OF 1

THIS DRAWING IS A CONTROLLED DOCUMENT FOR AMP INCORPORATED. IT IS SUBJECT TO CHANGE AND THE CONTROLLING ENGINEERING ORGANIZATION SHOULD BE CONTACTED FOR THE LATEST REVISION.

Mouser Electronics

Authorized Distributor

Click to View Pricing, Inventory, Delivery & Lifecycle Information:

[TE Connectivity:](#)

[202508-1](#)