

CUSTOMER PRINT

PART NUMBER: W18280-XSG-P-3XX

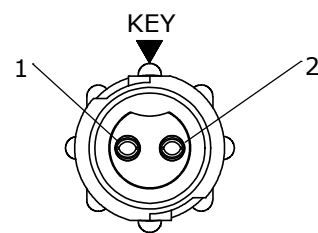
NOTES:

1. ALL PARTS TO BE BULK PACKED
2. CONTACTS SHIPPED UNASSEMBLED
3. ALL DIMENSIONS ARE REFERENCE EXCEPT THOSE WITH A TOLERANCE

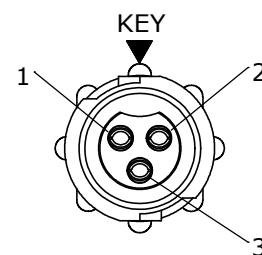
ASS'Y P/N	FOR CABLE O.D.
W18280-XSG-P-311	.09-.14 [2.3-3.5]
W18280-XSG-P-315	.15-.17 [3.8-4.3]
W18280-XSG-P-318	.18-.20 [4.6-5.1]

ASS'Y P/N	CONTACT QTY
W18280-2SG-P-3XX	2
W18280-3SG-P-3XX	3
W18280-XSG-P-3XX	

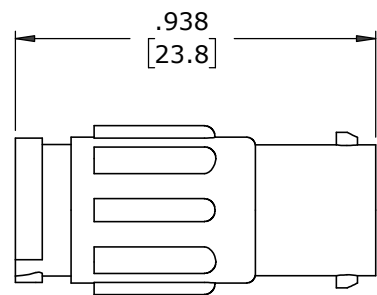
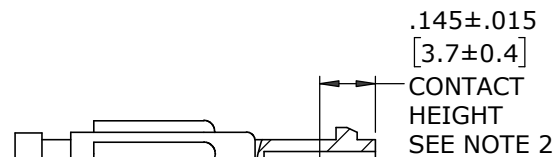
GROMMET SIZE
NUMBER OF CONTACTS



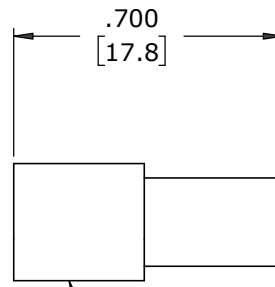
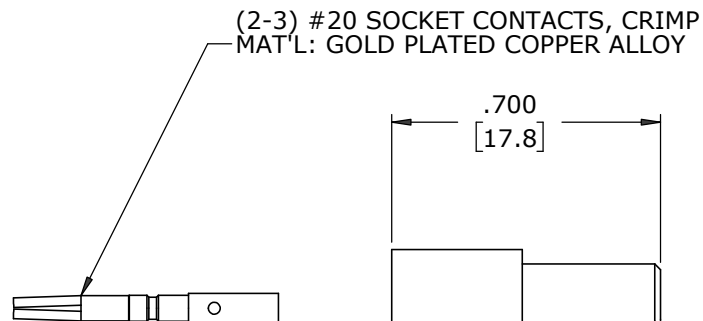
FACE VIEW
W18280-2SG-P-3XX



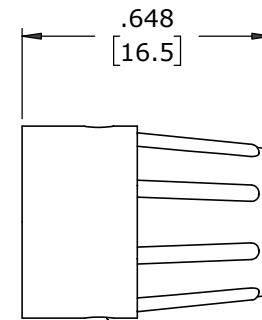
FACE VIEW
W18280-3SG-P-3XX



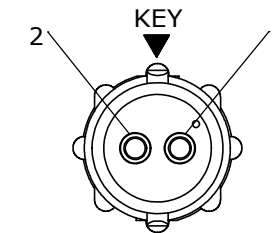
CABLE TO CABLE CONNECTOR, FEMALE
MAT'L: UV PBT, BLACK



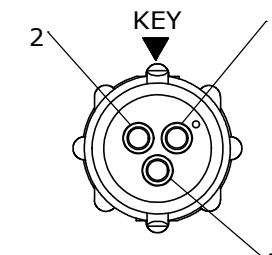
GROMMET
MAT'L: RUBBER, BLACK



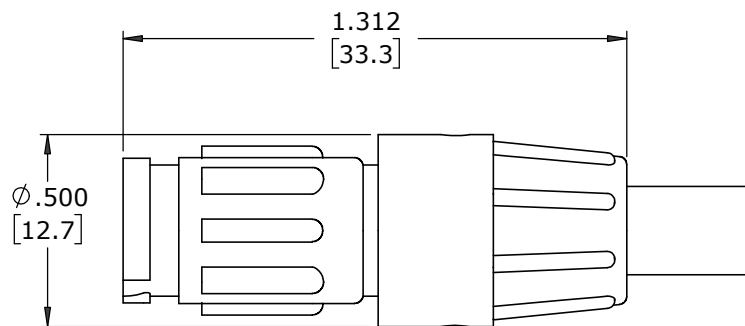
BACKSHELL
MAT'L: UV PBT, BLACK



WIRING VIEW
W18280-2SG-P-3XX



WIRING VIEW
W18280-3SG-P-3XX



SHOWN ASSEMBLED
FOR CUSTOMER REFERENCE ONLY

DIMENSIONS IN BASKETS [] ARE IN MILLIMETERS

CUSTOMER APPROVAL

THIS DOCUMENT CONTAINS CONFIDENTIAL INFORMATION PROPRIETARY TO CONXALL CORPORATION. ANY REPRODUCTION, DISCLOSURE, OR USE OF THIS DOCUMENT /INFORMATION IS EXPRESSLY PROHIBITED UNLESS AUTHORIZED IN WRITING BY CONXALL CORPORATION.

APPROVED BY: _____
DATE: _____

RoHS COMPLIANT

MA	08-20-20	RELEASED PER PDR 18004
A	JGK	8/22/19
REV.	INIT.	DATE
DESCRIPTION		ORIG. DRAWN BY: DATE: 8/22/19
ALL INFORMATION ILLUSTRATED IS THE PROPERTY OF "CONXALL CORPORATION". UNAUTHORIZED DUPLICATION OR DISTRIBUTION OF THIS DOCUMENT IS PROHIBITED.		CHECKED BY:
ALL UNITS ARE IN FEET, INCHES, FRACTION OF INCHES AND DECIMALS.		APPROVED BY:
UNLESS OTHERWISE SPECIFIED TOLERANCES: 3 PLACE DECIMALS ±.005 ANGLES 3/16 FRACTIONS ±1/16 - CRITICAL CHARACTERISTIC FLAG PER SPEC. XXXX		TITLE: CABLE TO CABLE CONN. ASSY (2-3) #20 SOCKET CONTACTS, CRIMP INSTA-CLICK™ MICRO-CON-X STANDARD PRODUCT
SCALE	SIZE	SHEET
NTS	B	1 OF 1
FILE:	DIRECTORY:	PART NUMBER:
W18280-XSG-P-3XX	SLW	W18280-XSG-P-3XX
REV A		



601 E. WILDWOOD VILLA PARK, IL 60181

Mouser Electronics

Authorized Distributor

Click to View Pricing, Inventory, Delivery & Lifecycle Information:

Switchcraft:

[W18280-2SG-P-315](#) [W18280-3SG-P-315](#) [W18280-2SG-P-318](#) [W18280-2SG-P-311](#) [W18280-3SG-P-318](#) [W18280-3SG-P-311](#)