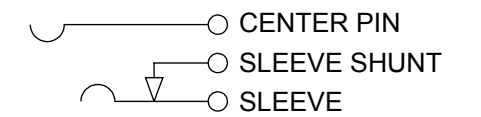
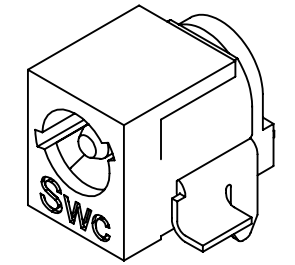
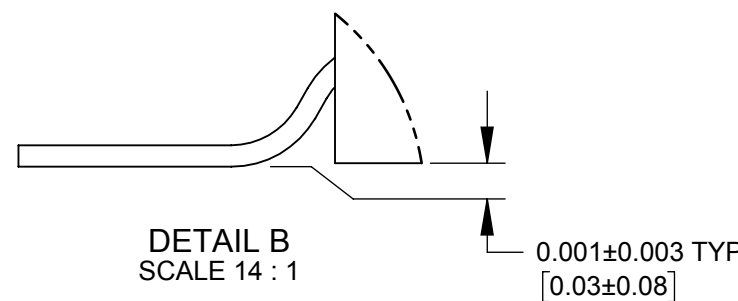
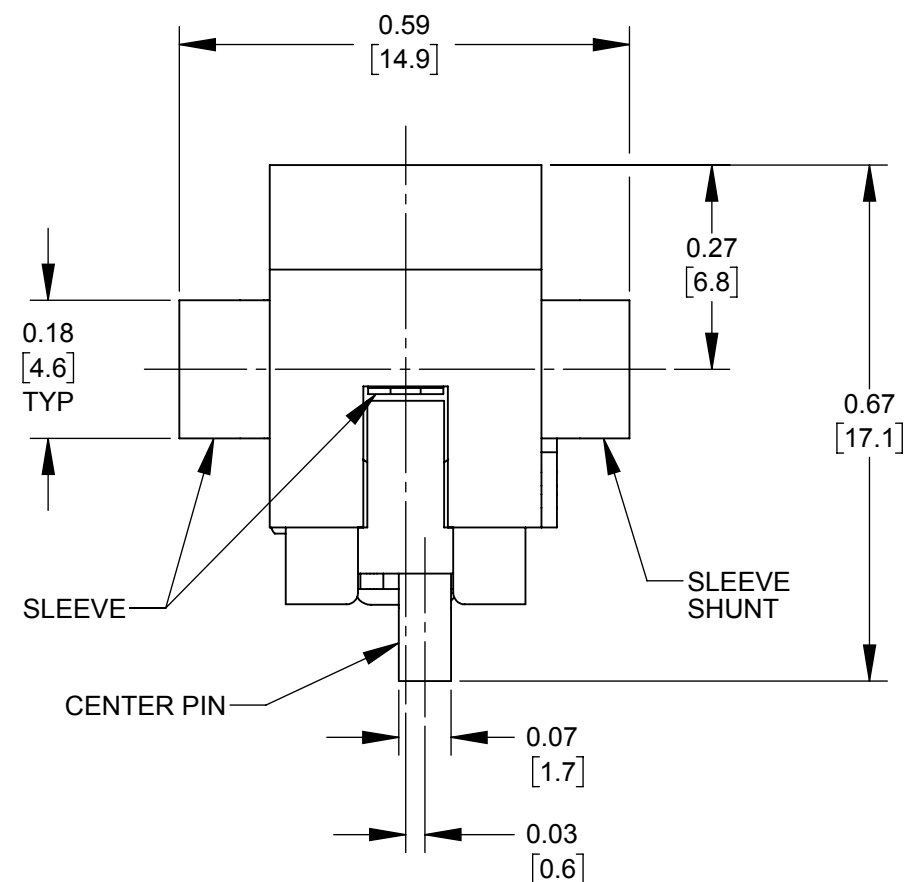


**SECTION A-A**



**SCHEMATIC**



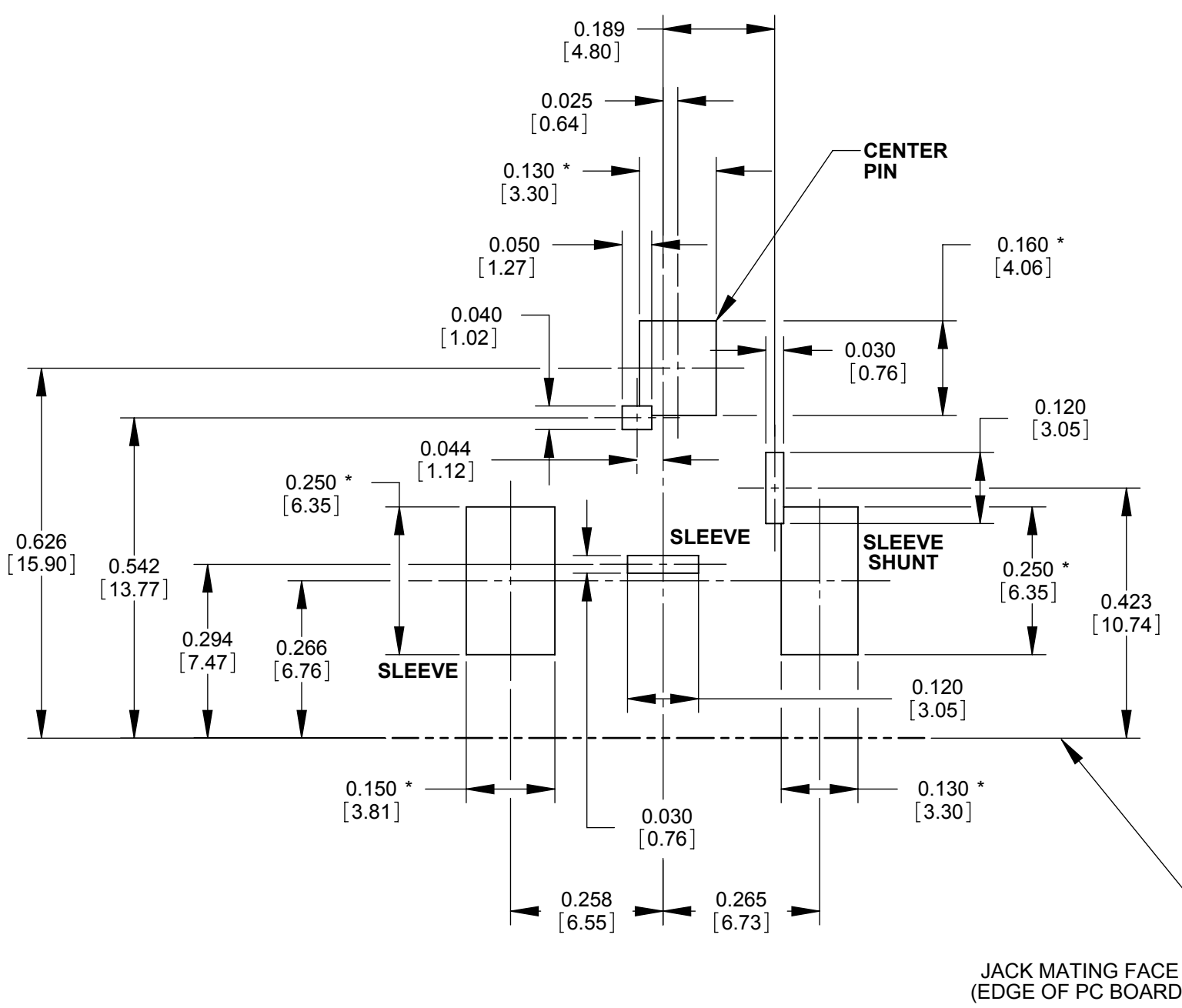
**DETAIL B**  
SCALE 14 : 1

**NOTES:**

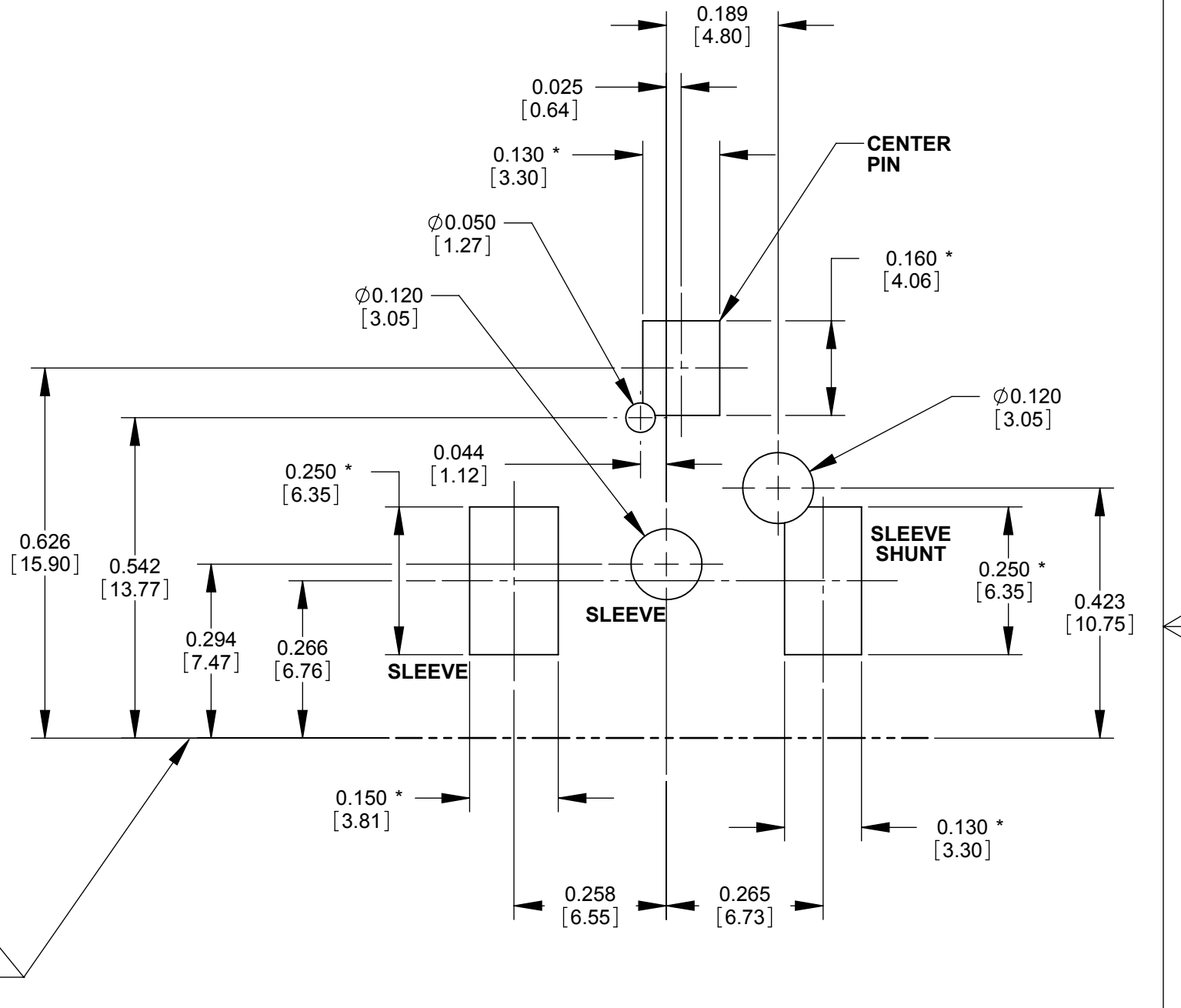
1. THIS PRODUCT IS RoHS COMPLIANT.
2. MATERIALS:  
 CENTER PIN: COPPER ALLOY, NICKEL PLATED  
 SLEEVE CONTACT: SPRING COPPER ALLOY, SILVER PLATED  
 PIN TERMINAL AND SHUNT: COPPER ALLOY, SILVER PLATED  
 HOUSING AND COVER: HIGH TEMPERATURE THERMOPLASTIC, BLACK
3. SPECIFICATIONS:  
 LIFE: 5000 CYCLES;  
 INSERTION FORCE: 5LB [2.3 KG] MAX;  
 WITHDRAWL FORCE: 0.5 LB [0.2 KG] MIN;  
 CONTACT RESISTANCE: 30 MILLIOHM MAX, 60 MILLIOHM MAX. AFTER TEST;  
 INSULATION RESISTANCE: 30 MEGAOHM MIN. @ 100VDC;  
 DIELECTRIC WITHSTANDING VOLTAGE: 250VAC FOR 1 MINUTE;  
 CURRENT (CARRYING): 5A  
 OPERATING TEMPERATURE: -30°C TO +65°C

**CUSTOMER DRAWING**

REVISIONS					STAR SYMBOL DENOTES CRITICAL DIMENSION	THIS DRAWING DESCRIBES A DESIGN CONSIDERED PROPRIETARY IN NATURE, DEVELOPED AND MANUFACTURED BY SWITCHCRAFT INC. AND IS RELEASED ON A CONFIDENTIAL BASIS FOR IDENTIFICATION PURPOSES ONLY.					
					<b>UNLESS OTHERWISE SPECIFIED</b> 1. ALL DIMENSIONS IN INCHES [mm] - TWO PLACE DECIMALS ±0.02 [0.5] - THREE PLACE DECIMALS ±0.005 [0.13]	SIZE	WIDTH	MULT	LBS/M	TEMPER	
						FINISH	MATERIAL				
						SPEC No.	SPEC No.				
						FIRST USED ON	SCALE 4:1				
A	28064	08-30-18	PC	TJK		DATE DRAWN	BY	CHKD	APVD		
REV	ECO NUMBER	DATE	BY	APVD	10-12-17	SRC	TJK	TJK	8/24/18		8/24/18
					<b>DO NOT SCALE DRAWING</b>	NAME: LOCKING POWER JACK, Ø0.10 [2.5mm] SURFACE MOUNT/PC HYBRID, RoHS					
										PART No. <b>RASH712BKZ</b>	REV <b>A</b>



**RECOMMENDED PC BOARD LAYOUT**  
(COMPONENT SIDE)



**ALTERNATE PC BOARD LAYOUT**  
(COMPONENT SIDE)

JACK MATING FACE  
(EDGE OF PC BOARD)

NOTE: \* SURFACE MOUNT PADS.

**CUSTOMER DRAWING**

SCALE 4:1	<b>Switchcraft</b> <sup>®</sup>	
DATE DRAWN 10-12-17		
DRAWN BY SRC	TOOL No. RASH712BKZ	REV A

# Mouser Electronics

Authorized Distributor

Click to View Pricing, Inventory, Delivery & Lifecycle Information:

[Switchcraft:](#)

[RASH712BKZ](#)