

PRODUCT NUMBER  
76745-XXX-XXLF

ROHS COMPATIBLE, SEE NOTE 8  
TOTAL NB OF POS (04 TO 72 POS)  
OPTION LETTER, SEE NOTE 6  
PIN STYLE

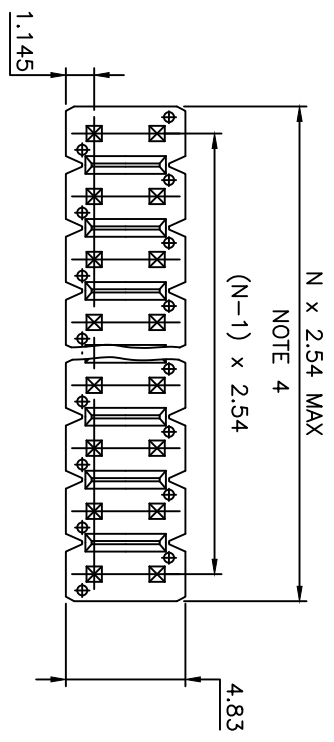
PLATING  
1 = 0.76µm GOLD/GXT,  
3 = 2µm MIN MATTE TIN FULL PLATED  
5 / 8 = 0.38µm GOLD/GXT  
1.27µm NI MIN UNDERPLATING

NOTES:

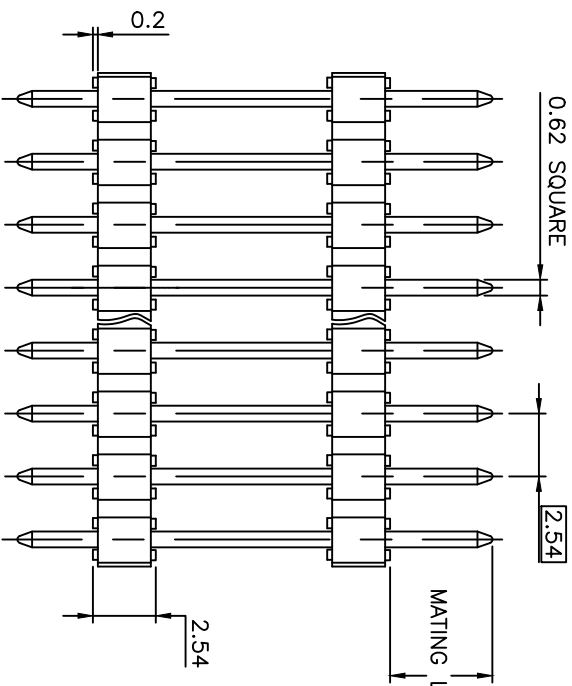
1. HOUSING MAT'L : HIGH TEMPERATURE THERMOPLASTIC. UL94V-0 COLOR: BLACK.
2. PIN MATERIAL : PHOSPHOR BRONZE.
3. 12N MIN RETENTION IN EITHER DIRECTION.
4. TO DETERMINE DIMENSIONS :  
N = NUMBER OF POSITIONS PER ROW  
EXAMPLE : 8 POS PER ROW, N x 2.54 = 20.32mm
5. FOR STANDARD SELECTIVE GOLD PLATED PRODUCTS SEE DRAWINGS 54111 & 54121.
6. OPTION LETTER :  
- = STANDARD PACKAGING IN POLYBAG  
V = POLYBAGS PACKAGING FOR CUSTOMER DEDICATED PART  
B = TUBE WITH PICK UP CAP AS AVAILABLE
7. RETENTION IS APPLIED TO TWO ADJACENT PINS AT EACH END OF THE PRODUCT SEE SCHEMA 1 OMIT FROM PRODUCT NUMBER IF THIS FEATURE IS NOT APPLICABLE

8. ROHS COMPATIBLE PRODUCT SPECIFICATIONS

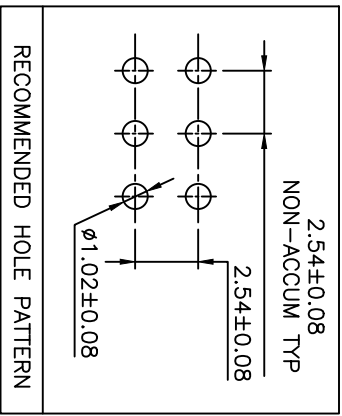
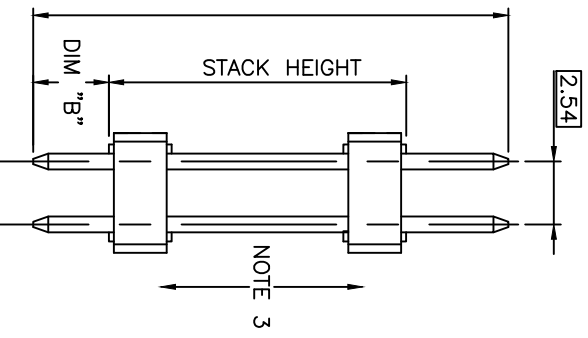
- a - PLATING:**  
- "LF" MEANS THE PRODUCT IS LEAD-FREE,  
2µm MINIMUM MATTE TIN OVER 1.27µm MINIMUM NICKEL UNDERPLATE.
- b - MANUFACTURING PROCESS COMPATIBILITY**  
- THE HOUSING WILL WITHSTAND EXPOSURE TO 260°C ±5°C SOLDER BATH TEMPERATURE FOR WITH A 1.6mm MIN THICK CIRCUIT BOARD.
- c - LABELING:**  
- MEETS PACKAGING SPECS AS PER GS-14-920
- d - LEGAL STATEMENT:** SEE GS-47-0004



SCHEMA 1  
TWO RETENTION PIN AT EACH END OF THE PRODUCT



OAL (OVERALL LENGTH) REF



mat'l. code	surface	tolerance	projection	product family
SEE NOTES	ISO 1302	ISO 406 ISO 1101		BSTK
lfr ecn no	lfr date	tolerance unless otherwise specified	mm	title
FF B-19782	AMA 14.12.18	XX #0.3		HEADER STR,DR
FG B-20322	AMA 15.01.27	XX #0.3		DOUBLE BODY
FH F-22479	BVE 15.11.12	XXXX #0.05	scale 5:1	
FK F-28617	DDE 17.11.27	dr NIZZI P		dwg no 76745
		enrgt COMPANON		sheet 1 of 4
FD B-19264	LMU 14.11.03	chr 94.05.05		A3
FE B-19345	LMU 14.11.07	lppd JMC		
sheet	revision	FK CC	F A	type
sheet	sheet	1 2 3 4		CUSTOMER Drawing
		4		

A

B

C

A

B

C

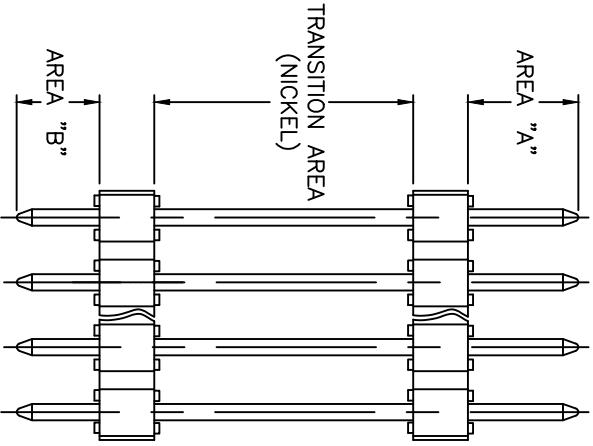
APPLICATION SPECIFIC				APPLICATION SPECIFIC				APPLICATION SPECIFIC						
PIN STYLE	MATING LENGTH $\pm 0.2$	STACK HEIGHT $\pm 0.25$	"B" $\pm 0.25$	"(OAL)" REF	PIN STYLE	MATING LENGTH $\pm 0.2$	STACK HEIGHT $\pm 0.25$	"B" $\pm 0.25$	"(OAL)" REF	PIN STYLE	MATING LENGTH $\pm 0.2$	STACK HEIGHT $\pm 0.25$	"B" $\pm 0.25$	"(OAL)" REF
01	8.71	19.76	2.65	31.12	CF	8.25	16.0	8.25	32.5	DX	6.50	12.50	6.50	25.50
02	6.87	16.5	3.05	26.42	CG	6.0	40.0	6.0	52.0	DY	6.50	9.50	6.50	22.50
03	6.87	13.0	3.63	23.5	CH	11.02	12.0	3.02	26.04	EA	6.65	32.30	3.05	42.00
04	5.6	6.5	2.88	14.98	CN	7.08	5.60	7.08	19.77	EB	2.66	15.00	5.84	23.50
05	5.51	8.0	3.05	16.56	CP	9.50	7.00	2.41	18.91	EC	10.00	39.60	2.40	52.00
06	6.61	11.3	3.05	20.96	CT	11.0	6.0	11.0	28.0	ED	5.40	57.20	2.40	65.00
07	5.58	10.3	2.54	18.42	CU	9.75	13.0	9.75	32.5	EF	5.84	46.50	3.05	55.40
08	5.81	7.7	3.05	16.56	CV	9.44	13.00	3.60	26.04	EG	5.60	20.00	5.64	31.24
09	5.72	5.08	2.54	13.34	CW	5.00	36.00	5.00	46.00	EH	4.60	15.00	1.50	21.10
10	6.9	10.45	2.71	20.06	CX	10.00	26.00	6.00	42.00	EJ	9.26	5.08	9.26	23.60
11	11.2	9.5	2.8	23.5	CY	10.9	18.20	10.9	40.00	EK	6.00	7.50	6.00	19.50
13	9.07	6.3	3.05	18.42	CZ	5.5	23.00	5.50	34.00	EL	6.00	12.30	4.10	22.40
14	5.33	21.5	2.48	29.31	DA	13.00	14.50	6.50	34.00	EM	9.00	9.30	6.21	24.51
17	7.5	23.45	3.05	34.0	DB	12.75	8.50	12.75	34.00	EN	5.75	26.90	5.75	38.40
19	9.5	10.45	3.55	23.5	DC	SEE SHEET 3								
21	11.96	18.5	3.2	33.66	DE	6.00	34.00	6.00	46.00					
23	9.0	25.9	3.05	37.95	DF	9.12	7.80	9.12	26.04					
24	8.87	14.5	3.05	26.42	DG	3.50	43.00	3.50	50.00					
25	9.84	11.43	9.85	31.12	DH	6.50	8.00	6.50	21.00					
28	6.6	8.25	2.8	17.65	DJ	5.80	17.75	5.80	29.31					
29	9.1	15.7	3.2	28.0	DK	5.40	9.00	2.90	17.30					
34	8.0	12.0	3.0	23.0	DL	9.00	8.50	6.00	23.50					
36	10.55	7.5	10.53	28.58	DM	7.40	23.70	3.30	34.40					
40	7.0	6.5	3.06	16.56	DN	7.40	12.10	3.30	22.80					
55	13.0	20.0	3.2	36.2	DP	8.00	16.80	5.40	30.20					
57	11.78	5.08	3.23	20.06	DR	6.40	15.00	6.40	27.80					
58	23.0	8.5	5.5	36.97	DS	7.00	29.00	7.00	43.00					
59	9.0	18.2	9.0	36.2	DT	9.80	27.40	9.80	47.00					
62	9.2	9.3	3.5	22.0	DU	9.50	36.50	9.50	55.50					
68	6.75	8.0	2.9	17.65	DV	9.30	6.30	5.80	22.00					
71	6.8	5.2	2.69	14.69	DW	5.30	40.40	3.30	49.00					
79	9.95	39.0	3.05	52.0										
80	5.68	7.0	2.3	15.0										
88	10.8	8.0	3.7	22.5										
AN	10.0	29.0	3.0	42.0										
BD	11.7	13.5	3.21	28.41										
BM	11.5	11.5	3.04	26.04										
BT	8.5	35.0	8.5	52.0										
CB	9.0	30.0	3.0	42.0										
CD	9.24	12.0	9.24	30.48										

SEE SHEET 3

SEE SHEET 3

SEE SHEET 3

mat'l. code		surface		tolerance		projection		product family	
lfr	ecm no	lfr	date	ISO 1302	ISO 406	ISO 1101	1st angle	BSTK	
CB	B-20322	AMA	15.01.27	tolerances unless otherwise specified		Linear		HEADER STR,DR	
CC	F-28617	DDE	17.11.27					DOUBLE BODY	
BW	F11-0044	LMU	11.04.04	COMPAGNON	J	94.05.05	scale	dwg no	76745
BX	F12-0096	JFA	12.12.07	JMC		95.08.28	mm	sheet 2 of 4	A3
BY	B-16665	LMU	14.01.06	chr			FCJ	type	CUSTOMER
CA	B-1345	LMU	14.11.07	lppd	JMC	95.08.28		Drawing	
Sheet	revision								
Index	sheet								



SPECIFICS PLATING AREA FOR PART NUMBERS :

- P/N 76745-1CH-10LF
- P/N 76745-1CH-18LF
- P/N 76745-579R24LF
- P/N 76745-579R30LF
- P/N 76745-1CU-20LF
- P/N 76745-1DF-26LF

AREA "A" & "B" : GOLD/GXT PLATING AREA

mat'l. code	surface	tolerance	projection	product family
	ISO 1302	ISO 406 ISO 1101		BSTTK
lfr ecn no   dr   date	tolerances unless otherwise specified			title
A F06-110 LMU 06.01.26	angles	Linear	mm	HEADER STR, DR
B F06-0198 LMU 06.06.20			scale	DOUBLE BODY
C F07-0268 JCO 07.10.15				dwg no 76745
D F12-0023 LMU 12.06.06   dr   L.MULIN		06.01.31		sheet 3 of 4
E F12-0099 JFA 12.12.07   engr   J.COMPRAGON		06.01.31		size A3
F B-16665 LMU 14.01.06   chr				type CUSTOMER
Sheet	revision	qppd JMC	06.01.31	Drawing
Index	Sheet			

1 2 3 4 5 6

SPECIFIC PRODUCT NUMBER

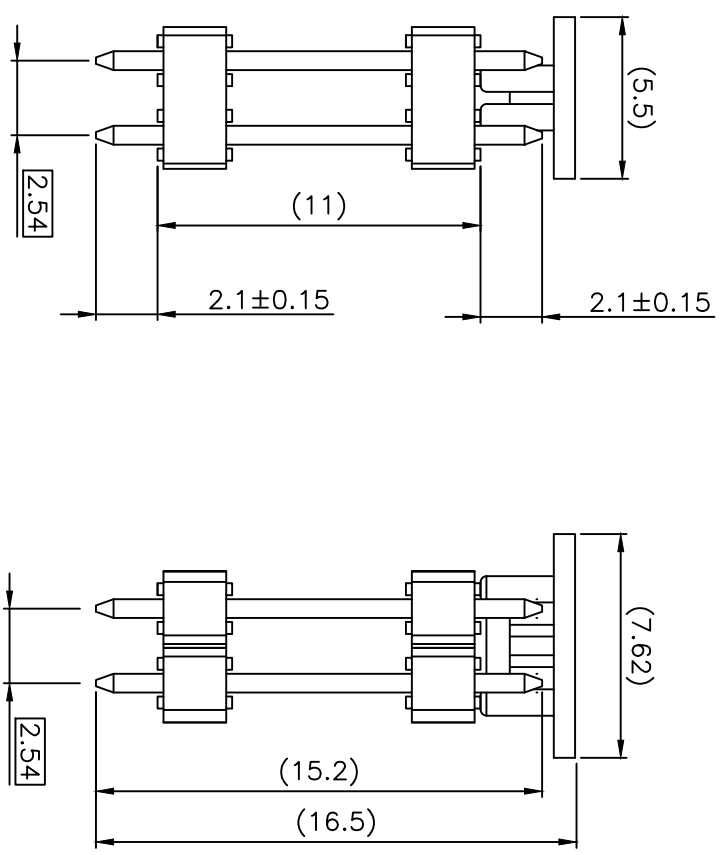
76745-3DCA04LF

- RoHS COMPLIANT
- TOTAL NB OF POS
- PACKAGING TYPE, SEE NOTE 1
- PIN STYLE

PLATING  
 3 = 2µm MATTE TIN  
 OVER 1.27µm Ni MIN

NOTES :

1. PACKAGING : A = TAPE & REEL PACKAGING  
 WITH PICK UP CAP INSTALLED  
 SEE TA 840
2. PRODUCT COMPATIBLE WITH REFLOW PROCESS.  
 255°C PEAK TEMPERATURE 10-40 SECONDES IN  
 A CONVECTION, INFRA-RED OR VAPOR PHASE



0 1 2 3 4 5 6

Copyright FCI



mat'l. code		surface		tolerance		projection		product family	
itr	ecn no	dr	date	ISO 1302	ISO 406	ISO 1101	mm	BSTK	title
A	B-16665	LMU	14.01.06	tolerances unless otherwise specified		linear		HEADER STR, DR	
sheet		revision		dr	L.MULLIN	13.02.18	scale	76745	sheet 4 of 4
index		sheet		enfr	J.COMPARANON	13.02.18	type	CUSTOMER	size
				chr	apppd	JMC	Drawing	A3	