

**CAP35N**

**CAP35S**

**CAP35L**

**CAP35**

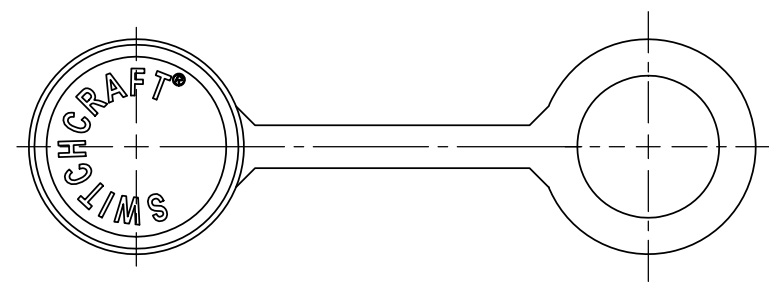
**L** - USE WITH 35FM3LS, 35FM3L, 35FM3AUL, 35FM3AULS  
35RM3LS, 35RM3L, 35RM3AUL, 35RM3AULS

**S** - USE WITH 35FM3S, 35FM3AUS, 35RM3S, 35RM3AUS

**N** - USE WITH 35FM3, 35FM3AU, 35RM3, 35RM3AU

- NOTES:
- PROTECTIVE DUST CAPS TO BE USED ON 3.5MM PANEL MOUNT JACKS.  
WEATHERTIGHT RATINGS - IP67 & IP68  
THERMAL SHOCK-MIL-STD-202G, METHOD 107G  
MOISTURE RESISTANCE- MIL-STD-202G, METHOD 106G
  - DIMENSIONS SHOWN FOR REFERENCE ONLY.
  - MATERIAL: THERMOPLASTIC ELASTOMER, BLACK.
  - THIS PRODUCT IS RoHS COMPLIANT.

**CUSTOMER DRAWING**



					THIS DRAWING DESCRIBES A DESIGN CONSIDERED PROPRIETARY IN NATURE, DEVELOPED AND MANUFACTURED BY SWITCHCRAFT INC. AND IS RELEASED ON A CONFIDENTIAL BASIS FOR IDENTIFICATION PURPOSES ONLY.				
					SIZE	WIDTH	MULT	LBS/M	TEMPER
					FINISH			MATERIAL	
					SPEC No.			SPEC No.	
					FIRST USED ON		SCALE 2:1		
					DATE DRAWN	BY	CHKD	APVD	
					02/22/18	AM	PC	TJK	
							08/05/19	08/05/19	
					NAME PROTECTIVE CAP, RoHS			PART No.	
					PANEL MOUNT 3.5MM JACKS			CAP35 SERIES	
								REV	
								A	
REVISIONS					DO NOT SCALE DRAWING				

# Mouser Electronics

Authorized Distributor

Click to View Pricing, Inventory, Delivery & Lifecycle Information:

[Switchcraft:](#)

[CAP35L](#) [CAP35N](#) [CAP35S](#)