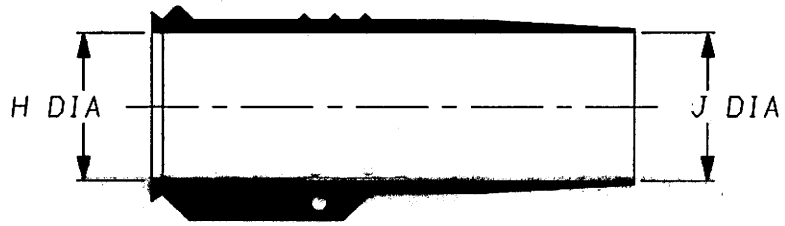
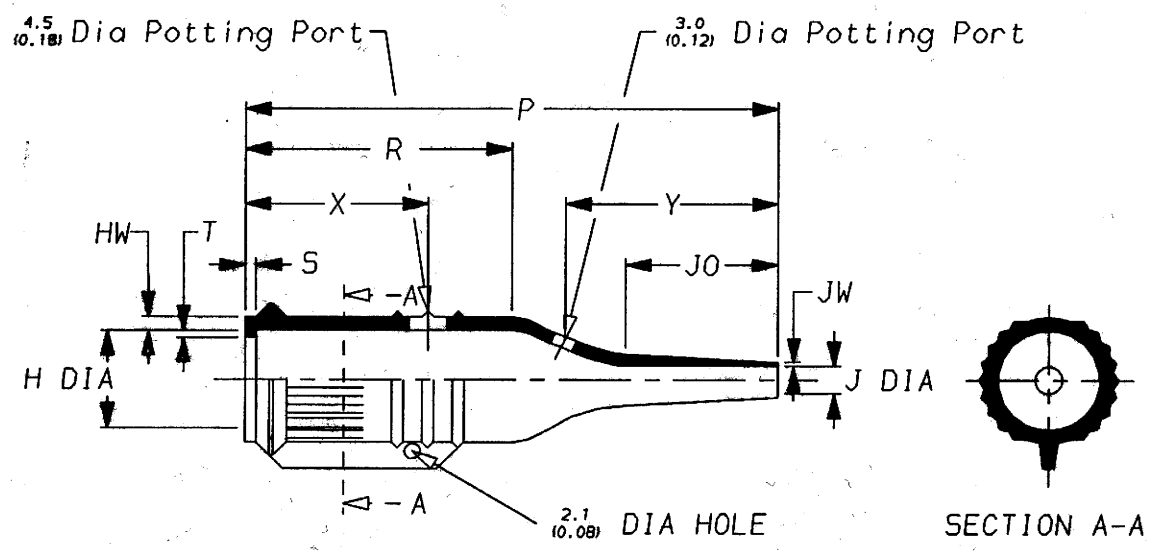


a) Part as supplied.

203W112



b) Part after unrestricted recovery.



**DIMENSIONS** in millimetres  
(in inches, for reference)

| Part No. | H            |                | J            |               | P            | R            | S             | T             | JO           | HW            | JW            | X            | Y            |
|----------|--------------|----------------|--------------|---------------|--------------|--------------|---------------|---------------|--------------|---------------|---------------|--------------|--------------|
|          | Min<br>a     | Max<br>b       | Min<br>a     | Max<br>b      | ±10%<br>b    | ±10%<br>b    | ±10%<br>b     | ±10%<br>b     | ±10%<br>b    | ±20%<br>b     | ±20%<br>b     | ±20%<br>b    | ±20%<br>b    |
| 203W112  | 18<br>(0.71) | 13.9<br>(0.55) | 18<br>(0.71) | 4.3<br>(0.17) | 70<br>(2.76) | 35<br>(1.38) | 1.5<br>(0.06) | 1.0<br>(0.04) | 20<br>(0.79) | 1.8<br>(0.07) | 0.5<br>(0.02) | 24<br>(0.94) | 28<br>(1.10) |

**Copyright (!)**

The copyright in this drawing is the property of Tyco Electronics UK Ltd. The drawing is issued on the condition that it is not copied, reproduced or disclosed to a third party, either in whole or in part without the prior written consent of Tyco Electronics UK Ltd.

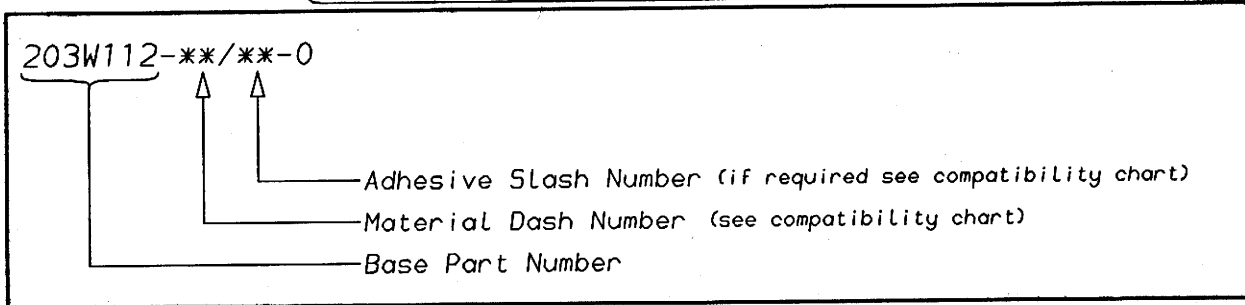
Drawn A.LILLEY. Checked *[Signature]* Issue 2 Date September 2001 Conforms to ISO Recommendations 3rd Angle Projection Not to Scale

Approval Design *[Signature]* MKTG. *[Signature]* Q.A. *[Signature]*



|                |                |  |                               |         |
|----------------|----------------|--|-------------------------------|---------|
| <b>Raychem</b> |                | <b>Specification<br/>Control Drawing</b> | Part Number<br><b>203W112</b> | Issue 2 |
| Iss.           | Date           | E.C.R.<br>No.                            | Details of Change             |         |
| 2              | September 2001 | CR01-HM-0017                             | Potting ports added           |         |

### Ordering Information



### COMPATIBILITY CHART

| Material Dash Number | Material Description            | SPEC Number      | Coating Slash Number |
|----------------------|---------------------------------|------------------|----------------------|
| -3                   | POLYOLEFIN, SEMI-RIGID          | RT-301, RK-6703  | /42, /86             |
| -4                   | POLYOLEFIN, FLEXIBLE            | RT-1304          | /42, /86             |
| -6                   | SILICON                         | RT-602, RK-6706  | N/A                  |
| -25                  | ELASTOMER, FLUID RESISTANT      | RT-1325, RK-6713 | /86, /225            |
| -130                 | POLYOLEFIN, COMMERCIAL FLEXIBLE | RW-2008          | /42                  |
|                      |                                 |                  |                      |
|                      |                                 |                  |                      |

#### NOTES

- ① As supplied dimensions are for uncoated parts, when coating is added entry diameters will reduce by 1.5mm Max.
- ② Potting Ports are optional, when specified by suffix -00 they will be located as shown.

|  |   |
|--|---|
| Tyco electronics UK Ltd.<br>Faraday Road,<br>Swindon, Wiltshire, SN3 5HH<br>England<br>Telephone: (01793) 528171 Fax: 572516 | Tyco electronics Corporation<br>300, Constitution Drive,<br>Menlo Park, CA 94025<br>USA<br>Telephone (650) 361-3860 Fax: (650) 361-5579 |
| Cage Code K1010  | Cage Code 06090   |

# Mouser Electronics

Authorized Distributor

Click to View Pricing, Inventory, Delivery & Lifecycle Information:

[TE Connectivity:](#)

[203W112-25-0](#)