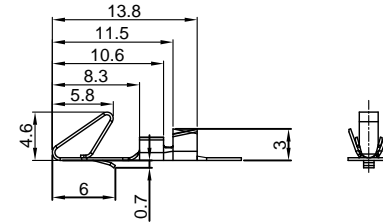


The information provided herein is from CONNELY Electronic Co., Ltd. and is confidential. Any disclosure to a party other than the recipient is prohibited. The intellectual properties and its rights contained herein, including but not limited to, trademarks, patents, copyrights, trade secrets, and technical know-how, are owned exclusively by CONNELY or its affiliates. Unauthorized use or reproduction of any part of this document for any purpose without the prior written permission of CONNELY is strictly prohibited. CONNELY may enforce its intellectual property rights at its own discretion, failures or delays to exercise such rights does not constitute a waiver of such rights.

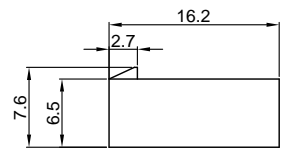
REV.	DESCRIPTION	DRAWN	CHECKED	APPROVED
A	NEW RELEASE	LL 10/09/06		LJC 10/09/06
D	DRAWING UPDATE	JLZ 05/04/18'		

Female Terminal

T-DS1072- S C 6 0 0
 Contact Plating
 6: Tin

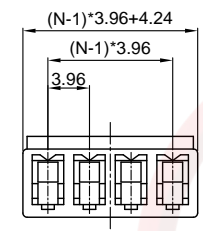


Female Housing



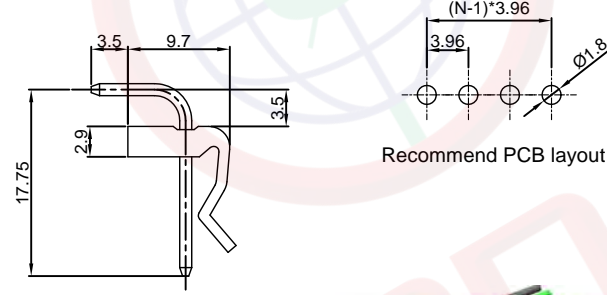
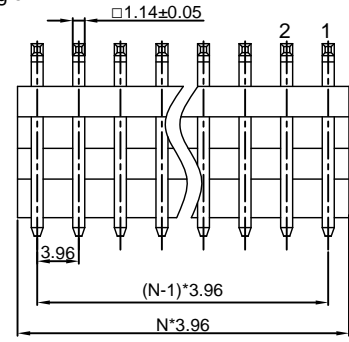
Female Terminal

Wire Range	O.D of Wire	
Section Area (mm) ²	AWG#	mm
0.2-0.75	24-18	1.3-2.8



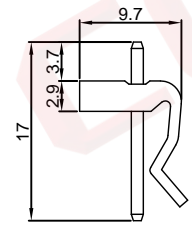
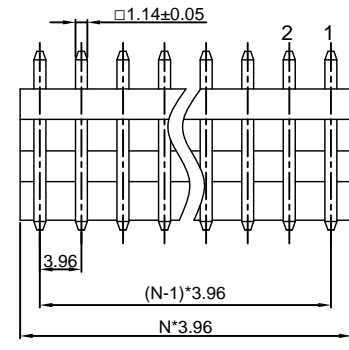
I-DS1072- S C T O X
 No. of contact
 02-18

Male Right Angle



Recommend PCB layout

Male V/T TYPE



N=No. of contacts

NOTES:

- MAIN SPECIFICATIONS
 - Housing material: NYLON 66
 - Wire range: AWG#24-#18
 - Rated voltage: 250V
 - Rated current: 7A(18AWG)
 - Contact resistance: 30mΩ Max
 - Insulation resistance: 1000MΩ Min
 - Withstanding voltage: 1000V, AC 1 minute
 - Temperature range: -25 ~ +85°C
 - Recommend PC board thickness: 1.6mm
- PRODUCT NUMBER CODE:

DS1072 - X X X X X

 - Contact Plating
6: Tin
8: Full gold flash
 - Housing Color
T: Transparent
 - Mounting type
R: Right Angle
V: V/T type
 - Connector type
M: Male
 - No. of contact
2 to 18

GENERAL TOLERANCE		ANGLE TOLERANCE		PROJECTION		TITLE
X.	±0.60	X.	±5°	UNITS	mm	P.C.B CONNECTOR Pitch 3.96mm
.X	±0.38	.X	±3°	SHEET SIZE	A4	
.XX	±0.25	.XX	±2°	SERIES	DS1072 SERIES	

DRAWING TYPE	CUSTOMER		
SCALE	1:1	SHEET	1 OF 1
DRAWING NO.	C-DS1072-XXXXX-D		

晨翔电子有限公司
 CONNELY ELECTRONIC CO. LTD