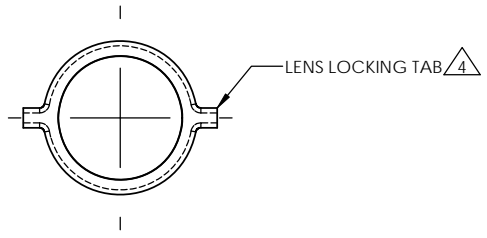
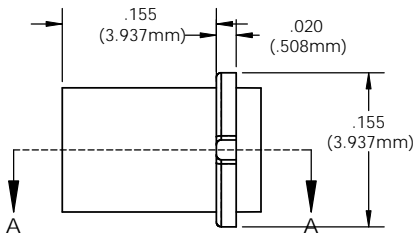


8 7 6 5 4 3 2 1

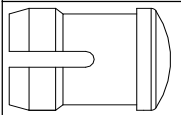
**NOTES:**

1. DESIGN: Lens mounts the Litepipe securely to display panel providing 180° viewing angle
2. MOUNTING: Panel mounting hole .171 (4.3mm) on 1/4" centers
3. PANEL THICKNESS: For SMB 200 & SMQ 250: 1/32" to 1/8"
4. **LENS LOCK:** Insert Litepipe into lens aligning the tabs with the lens slot
5. Standoff used to adjust the height of a standard LED above the PCB and maintain a maximum .050" clearance between the Litepipe and LED.
6. Length is from front of panel to LED
7. Custom lengths available upon request (Minimum order quantity may apply)
8. U.S. & Foreign Pat. Issued & Pend.

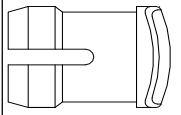
REVISIONS				
ECN #	REV	DESCRIPTION	DATE	INITIALS
	N/A	INITIAL RELEASE	4/4/96	JS
	001	REVISED PER ECR111009AZ01	4/23/10	KH



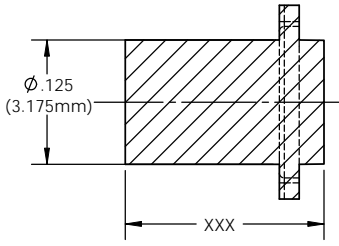
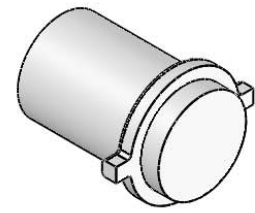
LENSES  
(ORDER SEPERATELY)



SMB 200

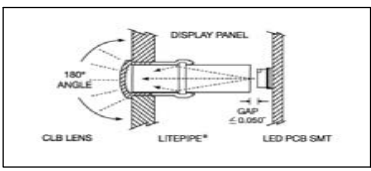


SMQ 250



ORDERING CODE: **LSV XXX CTP**

LENGTH CODE		COLOR	
020	= .200"	CTP	CLEAR
040	.400		
060	.600		
080	.800		
100	1.000		
120	1.200		



CUSTOM LENGTHS  
AVAILABLE UPON  
REQUEST  
(SEE NOTE 7)

<small>UNLESS OTHERWISE SPECIFIED DIMENSIONS ARE IN INCHES</small> ANGLES DECIMALS ±1° FINISH X ±.002 XXX ±.010 XXX ±.005 BREAK ALL CORNERS AND SHARP EDGES (R1/16") THIRD ANGLE PROJECTION <small>THE INFORMATION CONTAINED IN THIS DRAWING IS THE SOLE PROPERTY OF VISUAL COMMUNICATIONS COMPANY, INC. REPRODUCTION IN PART OR AS A WHOLE WITHOUT THE WRITTEN PERMISSION OF VISUAL COMMUNICATIONS COMPANY, INC. IS PROHIBITED.</small>	MATERIAL ACRYLIC (OPTICAL GRADE) U.L. 94-HB	VISUAL COMMUNICATIONS COMPANY, INC. 190 Bossick Boulevard, Suite 101 San Marcos, CA 92069 USA Phone (760) 560-1300 Fax (760) 560-1301 email vccsales@vccite.com
	FINISH SEE NOTES	TITLE: <b>3MM ROUND LITEPIPE</b>
APPROVAL DRAWN K.Howard CHECKED DPZ	DATE 4/23/10 5/4/10	SIZE DWG. NO. <b>B</b> LSV XXX CTP SCALE: 8:1
DO NOT SCALE DRAWING	SHEET 1 OF 1	REV 001

8 7 6 5 4 3 2 1

# Mouser Electronics

Authorized Distributor

Click to View Pricing, Inventory, Delivery & Lifecycle Information:

VCC:

[LSV\\_020\\_CTP](#) [LSV\\_040\\_CTP](#) [LSV\\_060\\_CTP](#) [LSV\\_080\\_CTP](#) [LSV\\_100\\_CTP](#) [LSV\\_120\\_CTP](#)