



Part Number : [03062023](#)

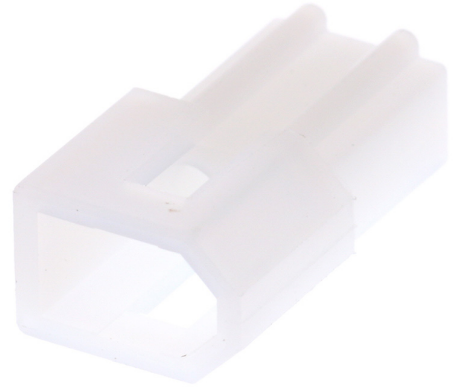
Product Description : 1.57mm Diameter Standard .062" Pin and Socket Plug Housing, 2 Circuits, without Mounting Ears, Natural

Series Number : 1625

Status : Active

Product Category : Connector Housings

Engineering Number : 1625-2P1



Documents & Resources

Drawings

[Drawing 003062023_sd.pdf](#)

3D Models and Design Files

[3D Model PDF 003062023.pdf](#)

[3D Model 003062023_stp.zip](#)

Specifications

[Packaging Specification PK-1625-003-001.pdf](#)

[Product Specification PS-02-06-001.pdf](#)

Product Environment Compliance

Compliance

GADSL/IMDS	Not Relevant
China RoHS	
EU ELV	Not Relevant
Low-Halogen Status	Low-Halogen per IEC 61249-2-21
REACH SVHC	Not Contained per D(2023)3788-DC (14 Jun 2023)
EU RoHS	Compliant per EU 2015/863

Multiple Part Product Compliance Statements

- Eu RoHS
- REACH SVHC

- Low-Halogen

Multiple Part Industry Compliance Documents

- IPC 1752A Class C
- IPC 1752A Class D
- Molex Product Compliance Declaration
- IEC-62474
- chemSHERPA (xml)

EU RoHS Certificate of Compliance

Part Details

General

Status	Active
Category	Connector Housings
Series	1625
Description	1.57mm Diameter Standard .062" Pin and Socket Plug Housing, 2 Circuits, without Mounting Ears, Natural
Application	Power, Wire-to-Wire
Comments	Polarized to Mating Part
Product Family	Standard .062"+ and Standard .062" Pin and Socket Connector Systems
Product Name	Standard .062"
UPC	800753615199

Agency

CSA	LR19980
UL	E29179

Electrical

Current - Maximum per Contact	5.0A
-------------------------------	------

Physical

Breakaway	No
Circuits Detail	1x2
Circuits (maximum)	2

Color - Resin	Natural
Flammability	94V-2
Gender	Plug
Glow-Wire Capable	No
Keying to Mating Part	None
Lock to Mating Part	Yes
Material - Resin	Nylon
Net Weight	0.790/g
Number of Rows	1
Packaging Type	Bag
Panel Mount	No
Pitch - Mating Interface	3.68mm
Pitch - Termination Interface	3.68mm
Polarized to Mating Part	Yes
Stackable	No
Temperature Range - Operating	-40° to +105°C

Solder Process Data

Lead-Free Process Capability	N/A
------------------------------	-----

Mates With / Use With

Mates with Part(s)

Description	Part Number
1.57mm Diameter Standard .062" Pin and Socket Receptacle Housing, 2 Circuits, with Pre-bent Mounting Ears, Natural	<u>0003061022</u>
1.57mm Diameter Standard .062" Pin and Socket Receptacle Housing, 2 Circuits, without Mounting Ears, Natural	<u>0003061023</u>
1.57mm Diameter Standard .062" Pin and Socket Receptacle Housing, 2 Circuits, without Mounting Ears, Black	<u>0003066023</u>

Use with Part(s)

Description	Part Number
-------------	-------------

Standard .062" Pin and Socket Female Crimp Terminals	<u>1561</u>
Standard .062" Pin and Socket Female Crimp Terminals	<u>1855</u>
Standard .062" Pin and Socket Male Crimp Terminals	<u>1560</u>
Standard .062" Pin and Socket Male Crimp Terminals	<u>1854</u>
Standard .062" Pin and Socket Male PC Tail Terminals	<u>1778</u>
Standard .062" Pin and Socket Female PC Tail Terminals	<u>1779</u>

This document was generated on Sep 04, 2023