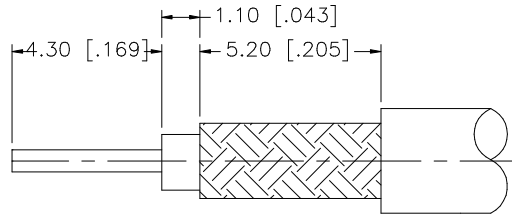
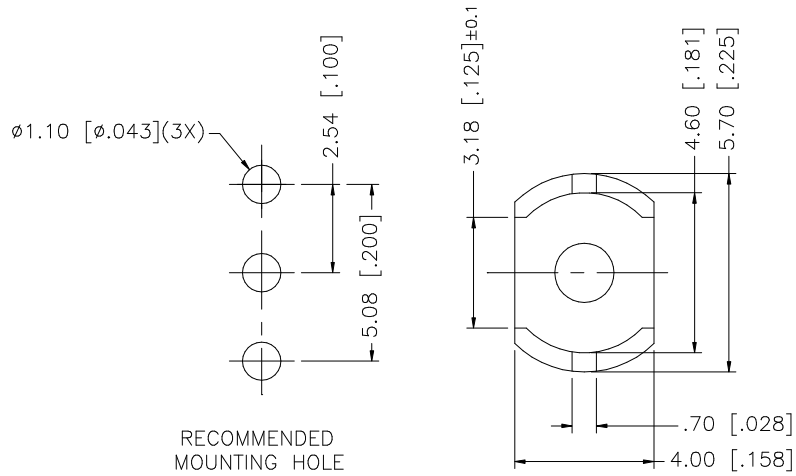


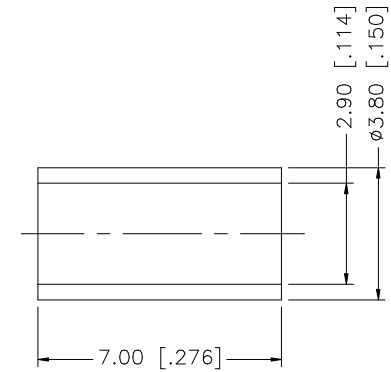
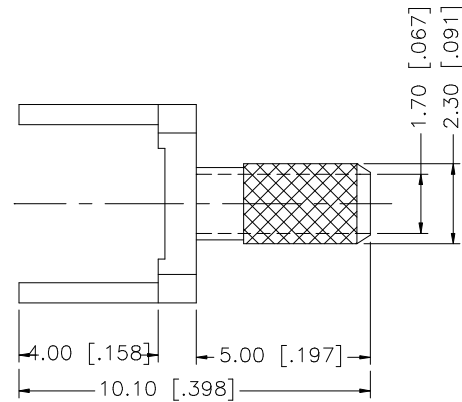
REV.	DATE	DESCRIPTION
A	03/08/05	UPDATE DRAWING FORMAT/ ADD 3.18 DIMENSION
B	12/16/06	REVISE DRAWING DESCRIPTION



RECOMMENDED
CABLE STRIPPING DIMS



RECOMMENDED
MOUNTING HOLE



NOTE:

1. CRIMPED FERRULE
HEX CRIMP SIZE 3.25 [.128"]

REV.	DATE	DESCRIPTION
8		
7		
6		
5		
4		
3		
2	FERRULE	COPPER
1	BODY	BRASS
	DESCRIPTION	MATERIAL
		FINISH
		QTY
		DO NOT SCALE DRAWING
	APPROVALS	DATE
	DRAWN G.R.S.	12/16/06
	CHECKED	
	ISSUED	
	SHEET 1 OF 1	
	CAD FILE	C:/142/142256.DWG
	PART DESCRIPTION	
	SMB TERMINATOR (FOR 316/U, 179/U CABLE)	
	PART NO.	
	142256	
	DWG. NO.	142256.DWG
	REV.	B
	SIZE	A
	SCALE	NA

Amphenol Connex

UNLESS OTHERWISE SPECIFIED DIMENSIONS ARE IN MILLIMETERS. DIMENSIONS IN [] ARE IN INCHES AND FOR CUSTOMER REFERENCE ONLY.

UNLESS OTHERWISE SPECIFIED TOLERANCES FOR MILLIMETERS ARE:
0.5 - 8mm ± 0.20mm
8 - 30mm ± 0.40mm
30 - 120mm ± 0.50mm

UNLESS OTHERWISE SPECIFIED TOLERANCES FOR INCHES ARE:
.020 - .315 = ± 0.007"
.315 - 1.180 = ± 0.015"
1.180 - 4.724 = ± 0.020"

Mouser Electronics

Authorized Distributor

Click to View Pricing, Inventory, Delivery & Lifecycle Information:

[Amphenol:](#)

[142256](#)