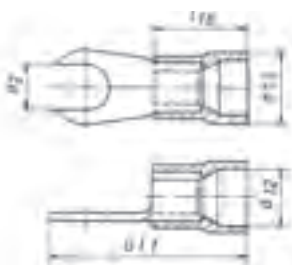




Insulated solderless terminals for meter connections, Cu, fork type



- ▶ For round conductors, e.g. to DIN EN 60228 Cl. 2, 5 and 6
- ▶ Special design for meter connection
- ▶ High-quality brazing process in the crimp area
- ▶ Fast preparation as no additional insulation of the crimped connection is required
- ▶ Insulation sleeve halogen-free

Characteristics

- Improved contact properties due to grooved profile
- Cross-section-dependent colour-coding
- Heat resistant to 105° C

Material

- Copper (ETP)
- Insulation sleeve: PA

Surface

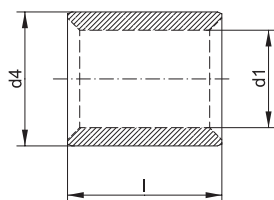
- Tin-plated to protect against corrosion

Technical instructions

- Tool: see page 84

Nominal cross section mm ²	Part No.	Colour	Dimension mm					Gewicht 100 St. ~kg Cu	Gewicht 100 St. ~kg Ges.	Packing unit/ pcs
			d12	d13	d2	Gl1	l10			
10	652C5	■	7.0	9.6	5.3	33.5	19.0	0.24	0.28	100
	652C6	■	7.0	9.6	6.4	33.5	19.0	0.26	0.30	100
16	653C6	■	8.6	10.6	6.4	37.5	20.5	0.35	0.40	100

Solderless connectors to DIN, Cu, short type



- ▶ For round conductors, e.g. to DIN EN 60228 Cl. 2, 5 and 6
- ▶ To DIN 46341, Part 1, Form A
- ▶ Ideal for connecting differing conductor cross-sections

Characteristics

- Simple cable entry due to internal chamfer
- Annealed material optimises material and crimping properties

Material

- Copper (EN13600)

Surface

- Tin-plated to protect against corrosion

Technical instructions

- Tool: see page 82

Additional information

- The sum of the single conductor cross sections must be within the specified cross section range.

Nominal cross section mm ²	Nominal size to DIN	Part No.	Dimension mm			Weight 100 pcs. ~kg	Packing unit/pcs
			d1	d4	l		
0.5 - 1	1	1620K	1.6	3.2	8	0.045	100
1 - 2.5	2.5	1630K	2.3	3.9	8	0.055	100
2.5 - 6	6	1650K	3.6	5.6	9	0.090	100
6 - 10	10	1652K	4.5	6.7	10	0.170	100
10 - 16	16	1653K	5.8	8.2	11	0.260	100
16 - 25	25	1654K	7.5	10.5	14	0.510	100
25 - 35	35	1655K	9.0	12.2	16	0.730	100
35 - 50	50	1656K	11.0	14.6	19	1.200	100
50 - 70	70	1657K	13.0	17.0	19	1.530	50
70 - 95	95	1658K	15.0	20.0	20	2.370	50
95 - 120	120	1659K	16.5	22.5	22	3.450	50
120 - 150	150	1660K	19.0	25.4	26	5.060	50