

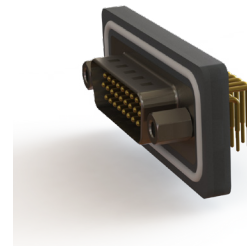
633W/634W SERIES



Waterproof HD D-Sub Connectors: Right Angle PCB Mount

Features:

- High density waterproof D-Sub
- 0.090" (2.29mm) contact spacing x 0.078" (1.98mm) row spacing
- Plug and receptacle in 15, 26 or 44 contact sizes
- Pin and socket contact mating design with right angle P.C. tail termination
- Plug shell indents provide grounding and additional mating retention
- Mounting options for panel mount or connector mating include threaded inserts or threaded standoffs
- D-shaped connector mating outline provides polarization
- Degree of protection: IP67 as per IEC60529



Specifications:

Insulator Material	PBT Thermoplastic with 30% Glass Filled, UL 94V-0 Rated, Black color
Contact Material	Pins and Sockets: Copper Alloy
Contact Plating	Gold Plating over Nickel underplating
Shell Material	Nickel Plated Steel
Epoxy Sealant	Epoxy
O-Ring	Silicone
Current Rating	3 amps Per Contact
Contact Resistance	10 Milliohms maximum
Dielectric Withstanding Voltage	5000 megaohms minimum
Insulation Resistance	1000 V AC rms at Sea Level
Operating Temperature	-25°C To +85°C

Ordering Code:

633-W15-262-012

SERIES:
 PLUG, RIGHT ANGLE, 9.7 [0.383] 633
 RECEPTACLE, RIGHT ANGLE, 9.7 [0.383] 634

EDAC CODE:
 WATERPROOF W

NO. OF CONTACTS:
 15 CONTACT PINS 15
 26 CONTACT PINS 26
 44 CONTACT PINS 44

CONTACT PLATING:
 GOLD FLASH OVER NICKEL 2
 15µ" GOLD OVER NICKEL 3
 30µ" GOLD OVER NICKEL 6

MOUNTING OPTION:
 2 #4-40 UNC THREADED HOLE

NOTE: ALL CONNECTORS ARE SHIPPED WITH
 #4-40 UNC HEXAGON SCREWS
 (Packed Separately)

SHELL OPTIONS:
 1 NICKEL PLATED

INSULATOR COLOR:
 0 BLACK

CONTACT CODE:
 62 RIGHT ANGLE PC TAIL

Mouser Electronics

Authorized Distributor

Click to View Pricing, Inventory, Delivery & Lifecycle Information:

EDAC:

[634-W15-262-012](#) [634-W26-262-012](#) [634-W44-262-012](#) [633-W15-262-012](#) [633-W26-262-012](#) [633-W44-262-012](#)
[633-W15-362-012](#) [633-W26-362-012](#) [633-W44-662-012](#) [633-W15-662-012](#) [633-W26-662-012](#) [633-W44-362-012](#)
[634-W26-362-012](#) [634-W44-362-012](#) [634-W15-362-012](#) [634-W26-662-012](#) [634-W44-662-012](#) [634-W15-662-012](#)