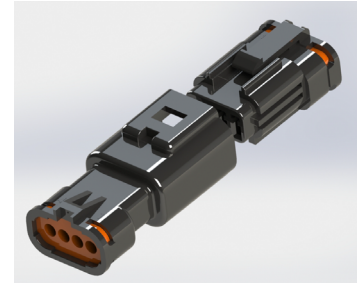


## WATERPROOF WIRE TO WIRE & WIRE TO BOARD CONNECTORS

### Features:

- 2.0mm pitch, rated current: 2A max
- Fully waterproof solution available in 2, 3, 4, or 6 positions (2 and 3 positions only for wire to board)
- Available in wire to wire and wire to board options
- Seals preassembled into housing; no external sealing required
- True crimp and poke solution
- Waterproofing cap available to cover unused positions
- Available with wire already installed
- Waterproof Grade: IP67 Certified



### Specifications:

No. of Positions	2, 3, 4, or 6
Pitch	2.0 mm
Rated Voltage	250 V
Rated Current	2 amps maximum
Dielectric Withstanding Voltage	1000 V AC (rms)
Contact Resistance	10 milliohms maximum
Insulation Resistance	1000 megaohms minimum/DC 500 V
Operating Temperature	-40°C to +105°C
PCB Thickness	1.6 mm

### Ordering Code:

566-002-000-710

SERIES:  
566, WIRE TO WIRE  
WIRE TO BOARD

NO. OF CONTACTS:  
002 - 2 CONTACTS  
003 - 3 CONTACTS  
004 - 4 CONTACTS  
006 - 6 CONTACTS

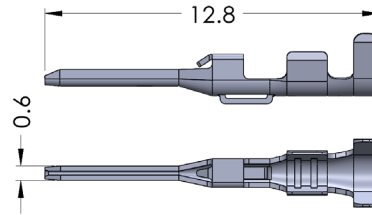
CONTACT CODE:  
000 - NO CONTACTS (ONLY FOR CRIMP CONTACTS)  
421 - BOARD MOUNT CONTACTS (PCB) ONLY FOR  
2 & 3 PIN SIZE

STYLE:  
701 - BLACK MALE HOUSING (ONLY FOR BOARD MOUNT CONTACTS)  
710 - BLACK MALE HOUSING FOR WIRE INSULATION Ø1.00 TO Ø1.25  
711 - BLACK MALE HOUSING FOR WIRE INSULATION Ø1.25 TO Ø1.50  
810 - BLACK FEMALE HOUSING FOR WIRE INSULATION Ø1.00 TO Ø1.25  
811 - BLACK FEMALE HOUSING FOR WIRE INSULATION Ø1.25 TO Ø1.50

### Crimp Contact:

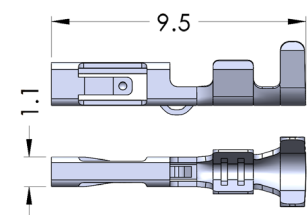
Male Contact (Pin)			
Part No	AWG#	Ins. Dia.	Pcs/Reel
566-290-711	22-28	Ø1.0~Ø1.5	12,000

\*\*Crimp Contacts are also available in strips of 60pcs. Contact EDAC for more information.



Female Contact (Socket)			
Part No	AWG#	Ins. Dia.	Pcs/Reel
566-290-721	22-28	Ø1.0~Ø1.5	12,000

\*\*Wire seals and housing seals are already pre-assembled in the connector.

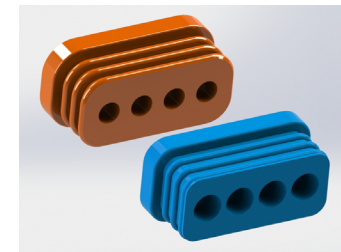


### Materials:

Crimp & Poke	Housing	PBT, UL 94V-0
	Contact	Phosphor Bronze
PCB Header	Housing	PBT with Glass, UL 94V-0
	Contact	Brass
Contact Plating		Tin Plating
Wire & Housing Seals		Silicone Rubber
Waterproofing Cap		PBT, UL 94V-0

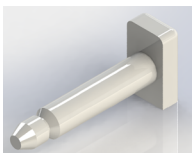
### Rear Gasket (Wire Seal):

Applicable Contact	Wire O.D.	Color
566-290-711	Ø1.00 to Ø1.25	Light Blue
566-290-721	Ø1.25 to Ø1.50	Orange



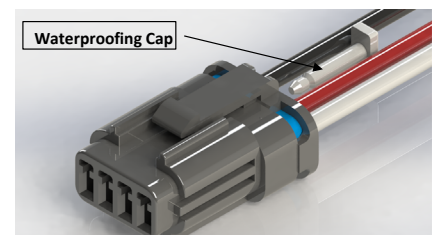
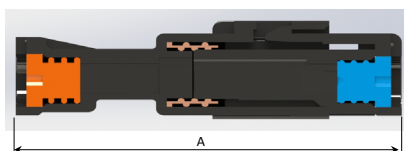
### Waterproofing Cap:

Part No.
566-200-100



### Assembly Layout:

PIN SIZE:	A (mm) LENGTH:
2P, 3P, 4P	28.85
6P	29.05

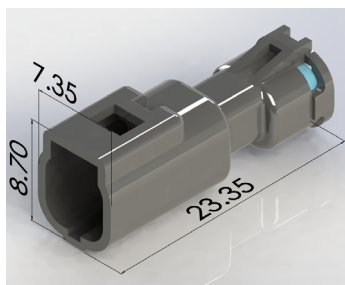


### Male Housing:

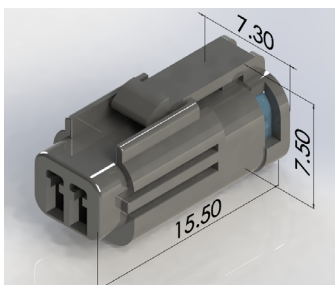
### Female Housing:

### PCB Header

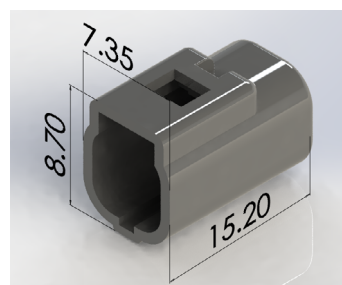
566-002-000-XXX



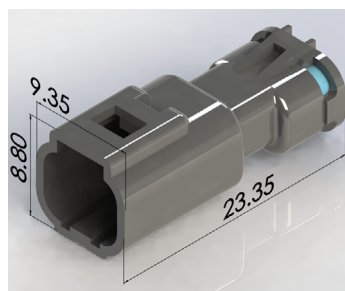
566-002-000-XXX



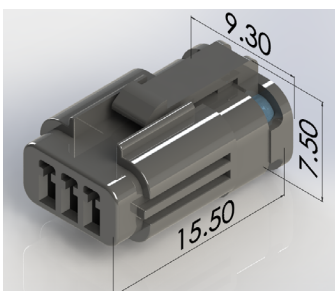
566-002-421-701



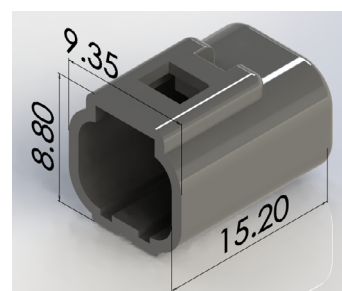
566-003-000-XXX



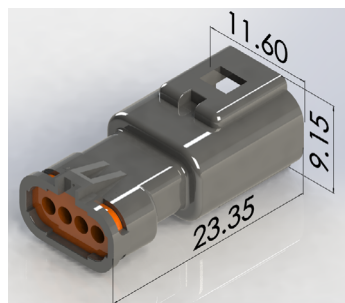
566-003-000-XXX



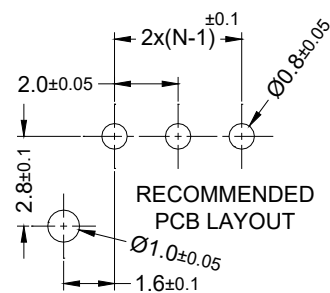
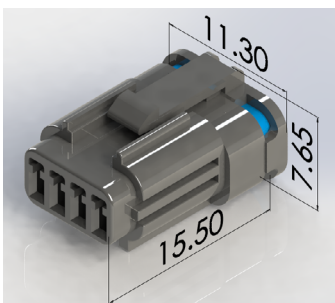
566-003-000-XXX



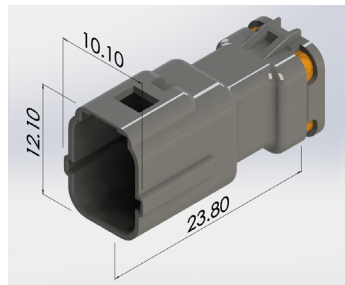
566-004-000-XXX



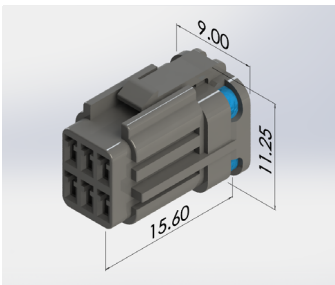
566-004-000-XXX



566-006-000-XXX



566-006-000-XXX



### Male Housing:

### Female Housing:

Ø Wire Insulation	Housing Color	XXX
"Ø1.00 to Ø1.25"	Black	710
"Ø1.25 to Ø1.50"	Black	711

Ø Wire Insulation	Housing Color	XXX
"Ø1.00 to Ø1.25"	Black	810
"Ø1.25 to Ø1.50"	Black	811

# Mouser Electronics

Authorized Distributor

Click to View Pricing, Inventory, Delivery & Lifecycle Information:

## EDAC:

[566-002-000-710](#) [566-002-000-711](#) [566-002-000-811](#) [566-003-000-710](#) [566-003-000-711](#) [566-003-000-810](#) [566-003-000-811](#) [566-004-000-710](#) [566-004-000-810](#) [566-004-000-811](#) [566-002-000-810](#) [566-004-000-711](#) [566-003-421-701](#) [566-002-421-701](#) [566-006-000-711](#) [566-006-000-811](#) [566-006-000-810](#) [566-006-000-710](#)