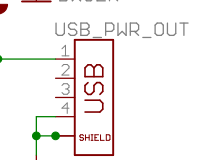
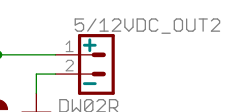
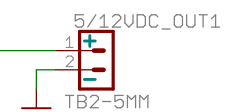
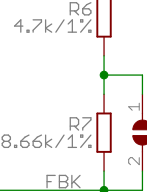
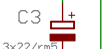
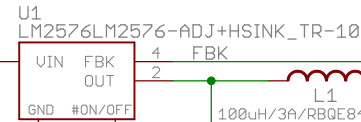
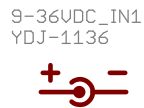
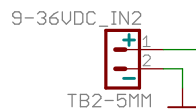


# Power Supply

12VDC out:	5V_E - open
15-36VDC in:	5V_USB_E - open
5VDC out:	5V_E - close
9-36VDC in:	5V_USB_E - close

15-36VDC input - 12V/2.5A output  
 9-36VDC input - 5V/2.5A output



×	×	DCDC-36-5_12_Rev_B
		6/30/15 4:34 PM
		Sheet: 1/1