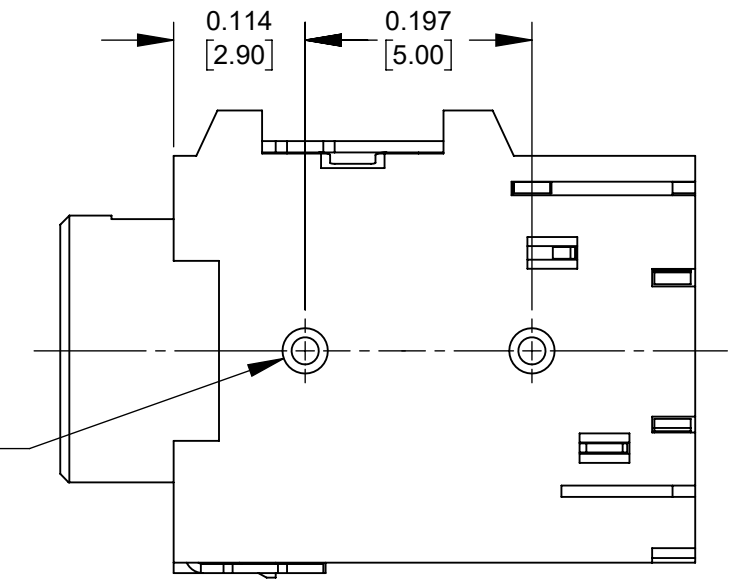


SCHMATIC



CUSTOMER DRAWING

NOTES:

- MATERIALS:**
HOUSING - THERMOPLASTIC, BLACK
SLEEVE - COPPER ALLOY, GOLD FLASHED
TERMINALS - COPPER ALLOY, TIN PLATED
- THIS PRODUCT IS RoHS COMPLIANT.

REV	ECO NUMBER	DATE	BY	APVD
A	28481	03/03/22	PC	TJK
REVISIONS				

UNLESS OTHERWISE SPECIFIED

- ALL DIMENSIONS IN INCHES [mm]
- TWO PLACE DECIMALS ±0.02 [0.5]
- THREE PLACE DECIMALS ±0.005 [0.13]

DO NOT SCALE DRAWING

THIS DRAWING DESCRIBES A DESIGN CONSIDERED PROPRIETARY IN NATURE, DEVELOPED AND MANUFACTURED BY SWITCHCRAFT INC. AND IS RELEASED ON A CONFIDENTIAL BASIS FOR IDENTIFICATION PURPOSES ONLY.									
SIZE	WIDTH	MULT	LBS/M	TEMPER					
FINISH SPEC No.					MATERIAL SPEC No.				
FIRST USED ON					SCALE 6:1				
DATE DRAWN	BY	CHKD	APVD						
10/27/21	TS	TS	TJK						
				10/27/21	3/1/22				
NAME				PART No.			REV		
3.5MM JACK, 4 CONDUCTOR, RoHS				35RAPC6CHWNSN			A		