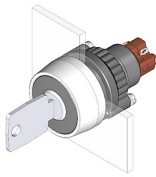


EAO – Your Expert Partner for Human Machine Interfaces

14-135.025K2 - Keylock switch actuator 2 positions

14-135.025K2 - Keylock switch actuator 2 positions



Attention: The preview is based on a sample product. This can differ from your current configuration.

Mounting

Mounting cut-out
Design \varnothing 22.5 mm
raised

Front

Front shape round
Front ring material Aluminium
Front dimension \varnothing 29 mm
Front colour black
Front material Plastic
Front ring colour natural anodized

Other Attributes

Weight 0.029 kg

Operating-/Indication part

Switching angle $C = 90^\circ$

IP-Rating

Front protection IP 65

Connection Method

Terminal Solder

Actuator

Key remove A + C
Switching action Rest - Maintained

Switching element

Rotary positions 2
Switching system Snap-action switching element
Switching current 5 A
Contacts 1 NC + 1 NO
Contact material Gold
Switching voltage 250 V AC

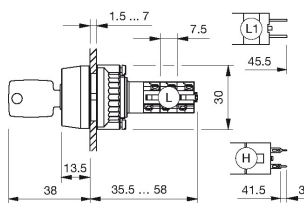
Function

Keylock switch

EAO – Your Expert Partner for Human Machine Interfaces

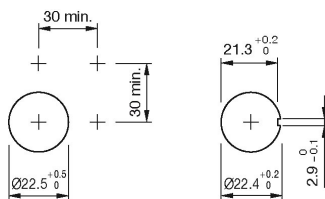
14-135.025K2 - Keylock switch actuator 2 positions

Dimensions

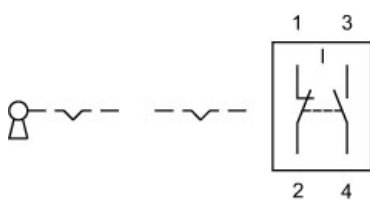


L = Solder terminal

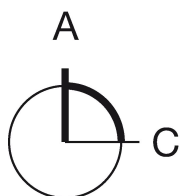
Mounting cut-outs



Wiring diagram



Switching positions



Additional information

Lock numbers 1001, lock type KABA

Two keys are supplied with each keylock switch.

Optional lock numbers on request

The colour of anodized aluminium parts can vary due to technical production reasons

Legend

Contacts: NC = Normally closed, NO = Normally open

Switching action: A = Rest, C = Maintained