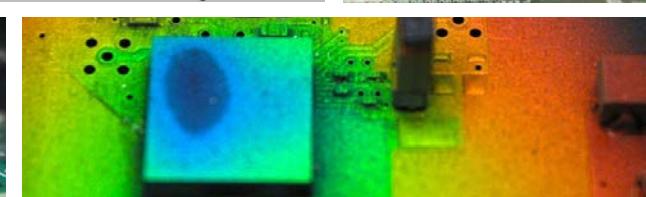
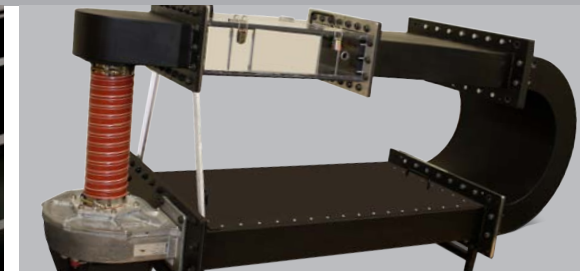
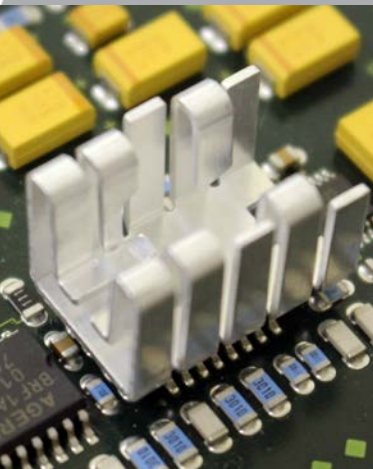


# Standard Board Level Heat Sink Catalog

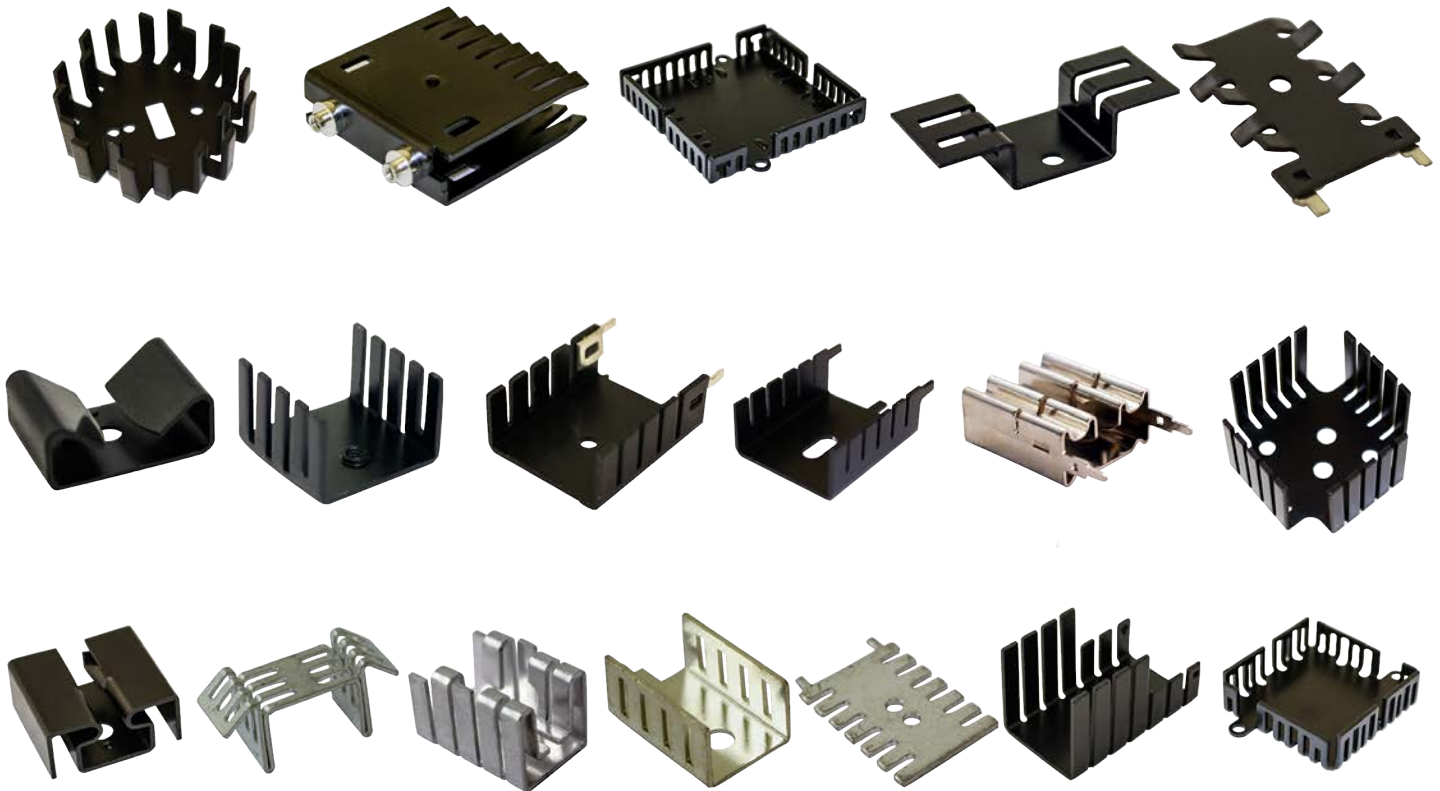


89-27 Access Road, Norwood, MA 02062  
T: 781.769.2800 F: 781.769.9979 | [www.qats.com](http://www.qats.com)



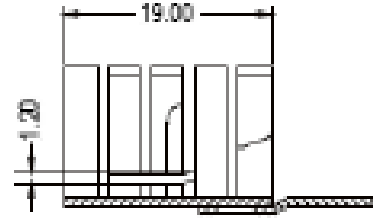
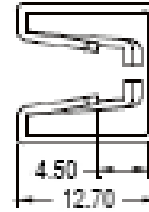
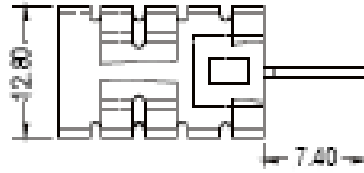
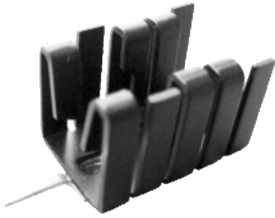
**ATS** ADVANCED  
THERMAL  
SOLUTIONS, INC.  
Innovations in Thermal Management®

## STAMPED STANDARD HEAT SINKS



- » PC Board Level Standard Heat Sinks
- » Standard for TO220s, TO-3s, TO-5s, TO-126s, TO-127s, TO-202s, TO-218s
- » Aluminum anodized material with solderable tabs or aluminum tin plated, copper tin plated
- » Clips, Nuts, or Thermal pad optional

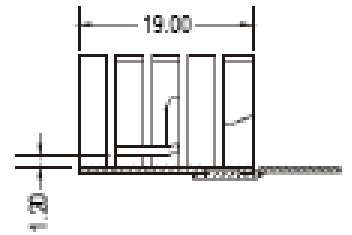
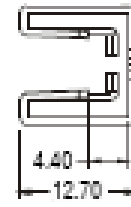
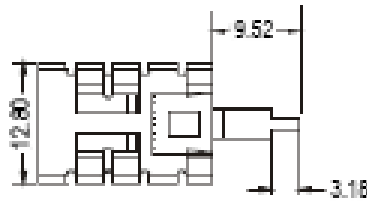
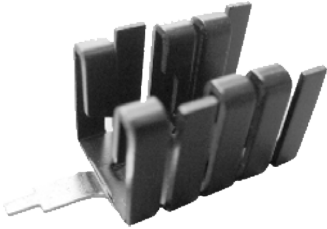
## ATS-PCB1001



### Product Details

Length (mm)	Width (mm)	Height (mm)	Tim	Material	Finish	Packaged Cooled	Thermal Resistance (Natural Convection)	R @ 200 LFM	R @ 400 LFM	R @ 600 LFM	R @ 800 LFM
19	12.8	12.7	No TIM	Aluminum	Blk Anodized	TO-220,TO-262	27.3	10.2	7.0	5.7	4.8

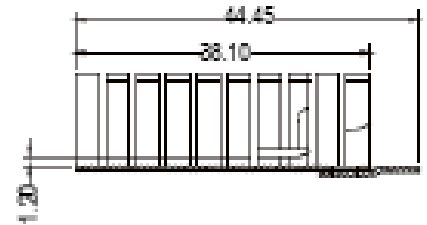
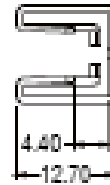
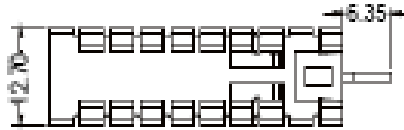
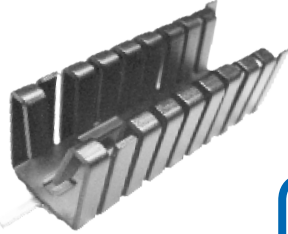
## ATS-PCB1002



### Product Details

Length (mm)	Width (mm)	Height (mm)	Tim	Material	Finish	Packaged Cooled	Thermal Resistance (Natural Convection)	R @ 200 LFM	R @ 400 LFM	R @ 600 LFM	R @ 800 LFM
19	12.8	12.7	No TIM	Aluminum	Blk Anodized	TO-220,TO-262	27.3	10.2	7.0	5.7	4.8

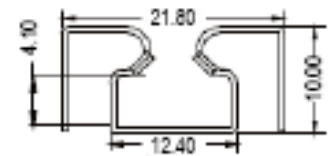
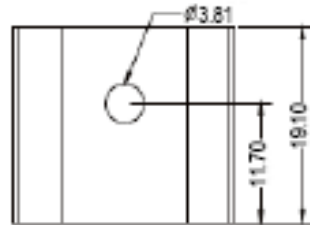
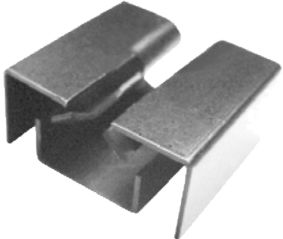
## ATS-PCB1003



### Product Details

Length (mm)	Width (mm)	Height (mm)	Tim	Material	Finish	Packaged Cooled	Thermal Resistance (Natural Convection)	R @ 200 LFM	R @ 400 LFM	R @ 600 LFM	R @ 800 LFM
38.1	12.7	12.7	No TIM	Aluminum	Blk Anodized	TO-220	20.0	7.0	4.6	3.7	3.0

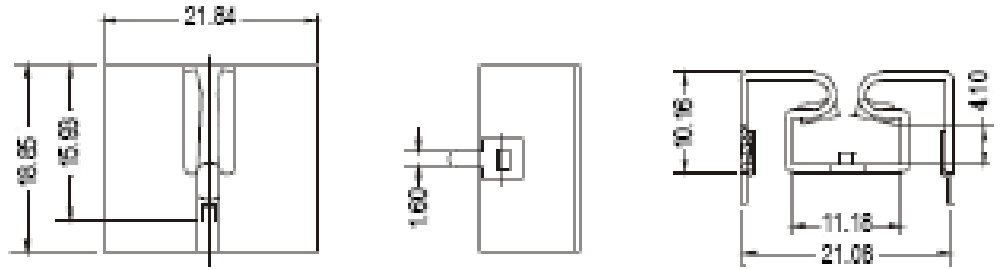
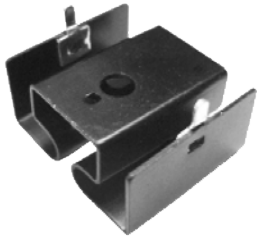
## ATS-PCB1004



### Product Details

Length (mm)	Width (mm)	Height (mm)	Tim	Material	Finish	Packaged Cooled	Thermal Resistance (Natural Convection)	R @ 200 LFM	R @ 400 LFM	R @ 600 LFM	R @ 800 LFM
19.1	21.8	10.0	No TIM	Aluminum	Blk Anodized	TO-220	23.2	12.7	9.0	7.0	5.6

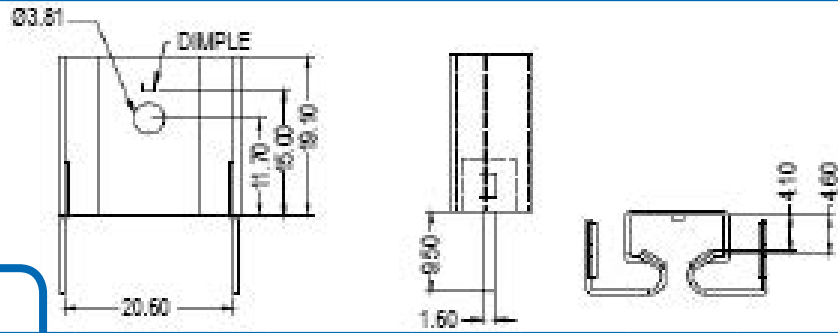
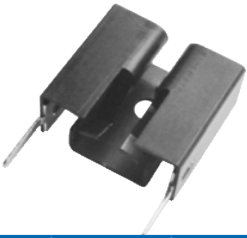
**ATS-PCB1005**



**Product Details**

Length (mm)	Width (mm)	Height (mm)	Tim	Material	Finish	Packaged Cooled	Thermal Resistance (Natural Convection)	R @ 200 LFM	R @ 400 LFM	R @ 600 LFM	R @ 800 LFM
18.9	21.8	10.	No TIM	Aluminum	Blk Anodized	TO-220	23.2	12.0	8.2	6.0	4.2

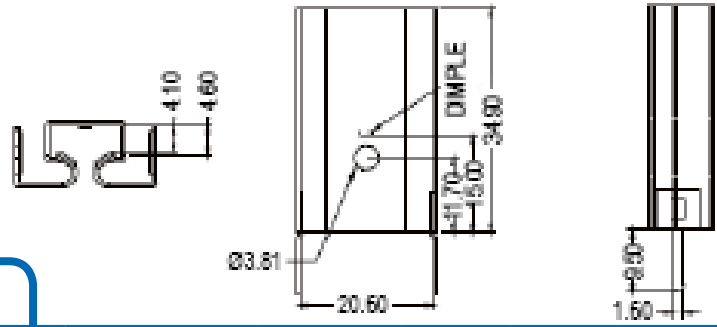
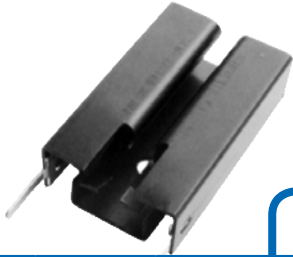
**ATS-PCB1006**



**Product Details**

Length (mm)	Width (mm)	Height (mm)	Tim	Material	Finish	Packaged Cooled	Thermal Resistance (Natural Convection)	R @ 200 LFM	R @ 400 LFM	R @ 600 LFM	R @ 800 LFM
19.1	21.8	9.9	No TIM	Aluminum	Blk Anodized	TO-220	21.2	11.0	8.0	6.0	4.8

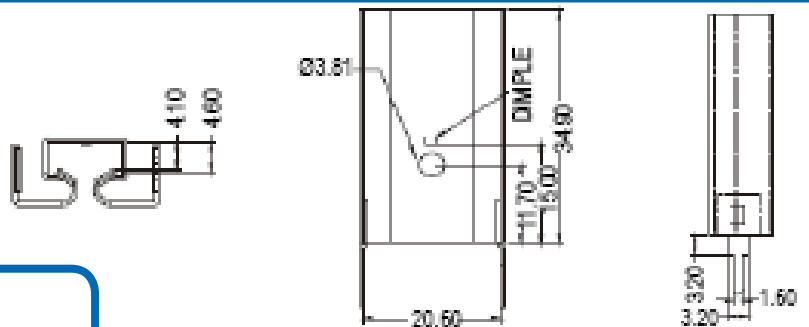
**ATS-PCB1007**



**Product Details**

Length (mm)	Width (mm)	Height (mm)	Tim	Material	Finish	Packaged Cooled	Thermal Resistance (Natural Convection)	R @ 200 LFM	R @ 400 LFM	R @ 600 LFM	R @ 800 LFM
34.9	21.8	10.0	No TIM	Aluminum	Blk Anodized	TO-220	16.0	11.0	8.0	6.0	4.8

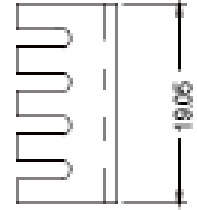
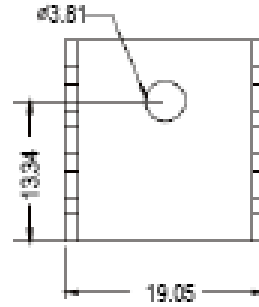
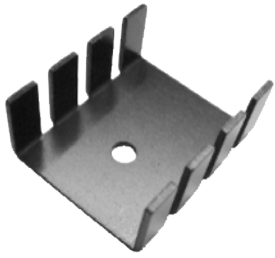
**ATS-PCB1008**



**Product Details**

Length (mm)	Width (mm)	Height (mm)	Tim	Material	Finish	Packaged Cooled	Thermal Resistance (Natural Convection)	R @ 200 LFM	R @ 400 LFM	R @ 600 LFM	R @ 800 LFM
34.9	21.8	10.0	No TIM	Aluminum	Blk Anodized	TO-220	16.0	11.0	8.0	6.0	4.8

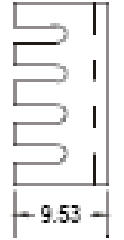
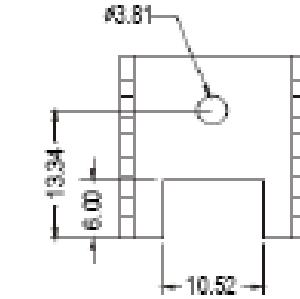
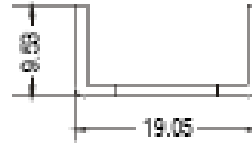
**ATS-PCB1009**



**Product Details**

Length (mm)	Width (mm)	Height (mm)	Tim	Material	Finish	Packaged Cooled	Thermal Resistance (Natural Convection)	R @ 200 LFM	R @ 400 LFM	R @ 600 LFM	R @ 800 LFM
19.	19.	9.5	No TIM	Aluminum	Blk Anodized	TO-220	24.0	10.0	6.1	5.0	4.0

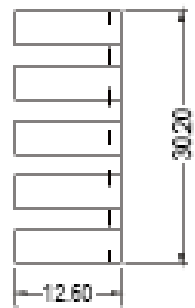
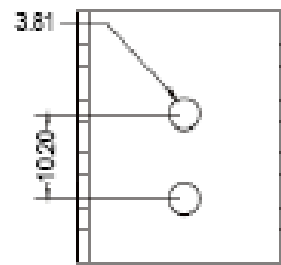
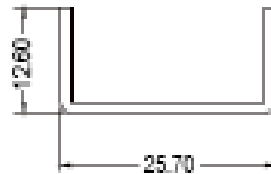
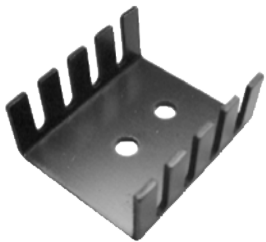
**ATS-PCB1010**



**Product Details**

Length (mm)	Width (mm)	Height (mm)	Tim	Material	Finish	Packaged Cooled	Thermal Resistance (Natural Convection)	R @ 200 LFM	R @ 400 LFM	R @ 600 LFM	R @ 800 LFM
19.	19.	9.5	No TIM	Aluminum	Blk Anodized	TO-220	24.0	10.0	6.1	5.0	4.0

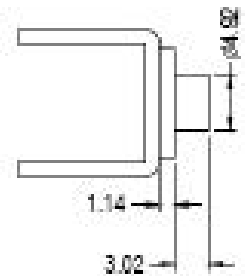
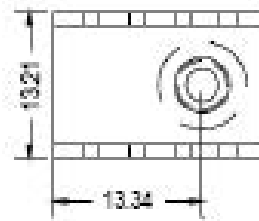
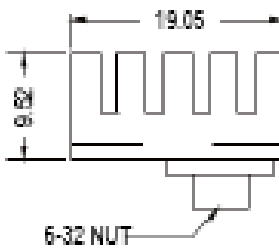
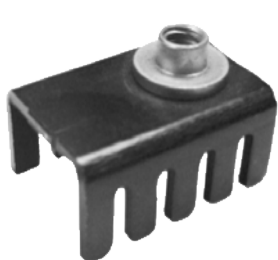
**ATS-PCB1011**



**Product Details**

Length (mm)	Width (mm)	Height (mm)	Tim	Material	Finish	Packaged Cooled	Thermal Resistance (Natural Convection)	R @ 200 LFM	R @ 400 LFM	R @ 600 LFM	R @ 800 LFM
30.2	25.7	12.6	No TIM	Aluminum	Blk Anodized	TO-220	16.7	11.0	7.8	6.0	5.1

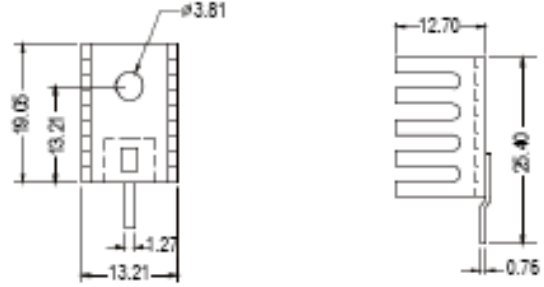
**ATS-PCB1012**



**Product Details**

Length (mm)	Width (mm)	Height (mm)	Tim	Material	Finish	Packaged Cooled	Thermal Resistance (Natural Convection)	R @ 200 LFM	R @ 400 LFM	R @ 600 LFM	R @ 800 LFM
19.	13.2	9.5	No TIM	Aluminum	Blk Anodized	TO-220	25.9	12.0	8.1	7.4	7.1

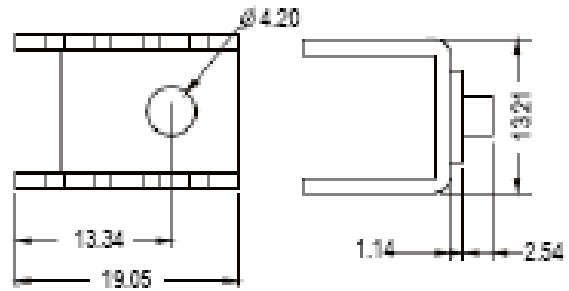
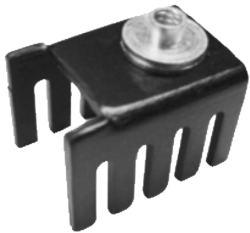
**ATS-PCB1013**



**Product Details**

Length (mm)	Width (mm)	Height (mm)	Tim	Material	Finish	Packaged Cooled	Thermal Resistance (Natural Convection)	R @ 200 LFM	R @ 400 LFM	R @ 600 LFM	R @ 800 LFM
19.	13.2	12.7	No TIM	Aluminum	Blk Anodized	TO-220	24.4	9.5	6.8	6.4	6.0

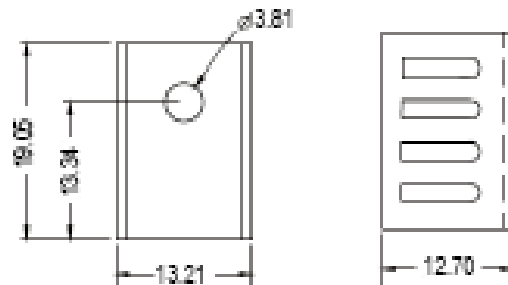
**ATS-PCB1014**



**Product Details**

Length (mm)	Width (mm)	Height (mm)	Tim	Material	Finish	Packaged Cooled	Thermal Resistance (Natural Convection)	R @ 200 LFM	R @ 400 LFM	R @ 600 LFM	R @ 800 LFM
19.	13.2	12.7	No TIM	Aluminum	Blk Anodized	TO-220	24.4	9.5	6.8	6.4	6.0

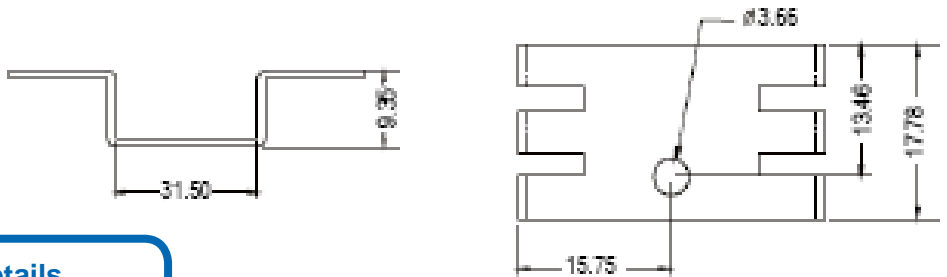
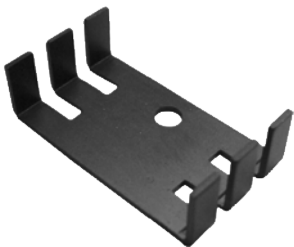
**ATS-PCB1015**



**Product Details**

Length (mm)	Width (mm)	Height (mm)	Tim	Material	Finish	Packaged Cooled	Thermal Resistance (Natural Convection)	R @ 200 LFM	R @ 400 LFM	R @ 600 LFM	R @ 800 LFM
19.	13.2	12.7	No TIM	Aluminum	Blk Anodized	TO-220	25.0	10.2	7.5	6.1	6.0

**ATS-PCB1016**

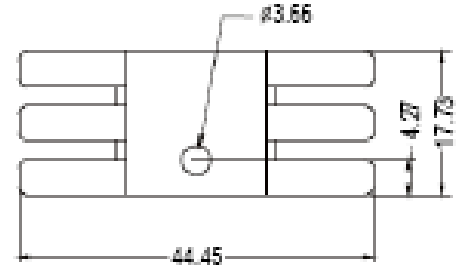
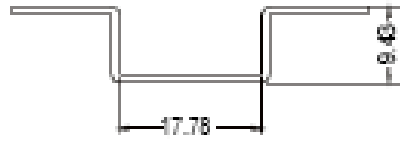
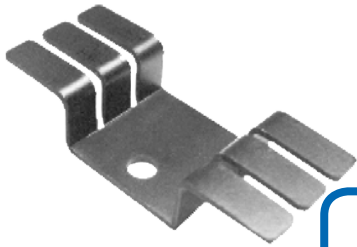


**Product Details**

Length (mm)	Width (mm)	Height (mm)	Tim	Material	Finish	Packaged Cooled	Thermal Resistance (Natural Convection)	R @ 200 LFM	R @ 400 LFM	R @ 600 LFM	R @ 800 LFM
17.8	31.5	9.4	No TIM	Aluminum	Blk Anodized	TO-220	20.6	12.5	10.0	8.9	8.2



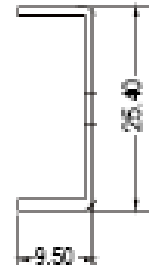
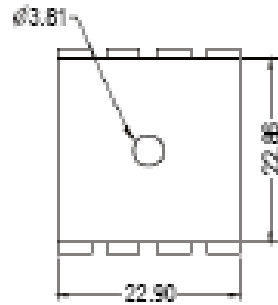
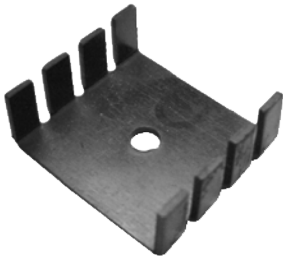
**ATS-PCB1017**



**Product Details**

Length (mm)	Width (mm)	Height (mm)	Tim	Material	Finish	Packaged Cooled	Thermal Resistance (Natural Convection)	R @ 200 LFM	R @ 400 LFM	R @ 600 LFM	R @ 800 LFM
17.7	44.5	9.4	No TIM	Aluminum	Blk Anodized	TO-220, TO-202	15.6	7.1	5.5	4.2	3.2

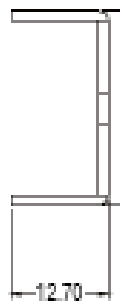
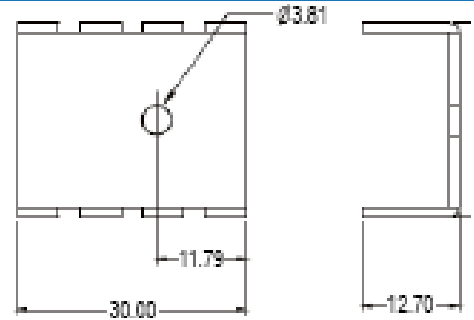
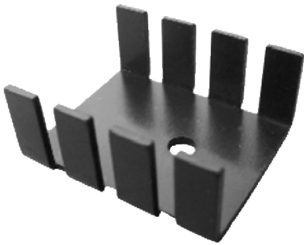
**ATS-PCB1018**



**Product Details**

Length (mm)	Width (mm)	Height (mm)	Tim	Material	Finish	Packaged Cooled	Thermal Resistance (Natural Convection)	R @ 200 LFM	R @ 400 LFM	R @ 600 LFM	R @ 800 LFM
22.9	25.4	9.5	No TIM	Aluminum	Blk Anodized	TO-220	20.8	8.1	5.3	4.1	3.8

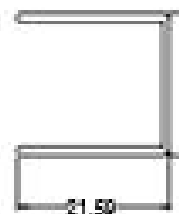
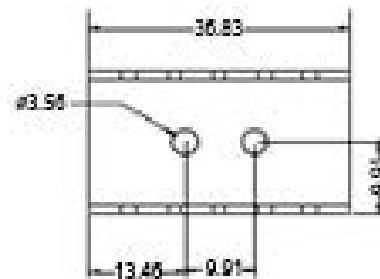
**ATS-PCB1019**



**Product Details**

Length (mm)	Width (mm)	Height (mm)	Tim	Material	Finish	Packaged Cooled	Thermal Resistance (Natural Convection)	R @ 200 LFM	R @ 400 LFM	R @ 600 LFM	R @ 800 LFM
30.0	25.4	12.7	No TIM	Aluminum	Blk Anodized	TO-220, TO-202, TO-220	22.0	10.1	7.0	5.0	4.2

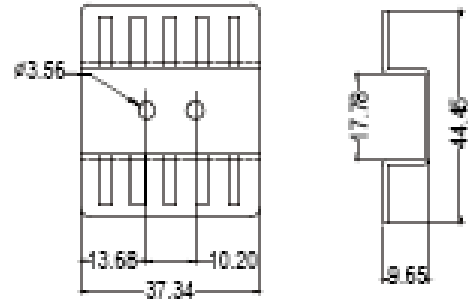
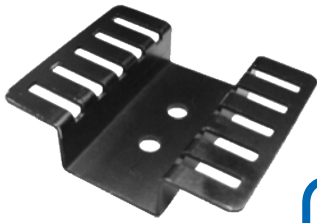
**ATS-PCB1020**



**Product Details**

Length (mm)	Width (mm)	Height (mm)	Tim	Material	Finish	Packaged Cooled	Thermal Resistance (Natural Convection)	R @ 200 LFM	R @ 400 LFM	R @ 600 LFM	R @ 800 LFM
36.8	19.8	21.6	No TIM	Aluminum	Blk Anodized	TO-220	6.4	5.0	3.5	2.2	1.9

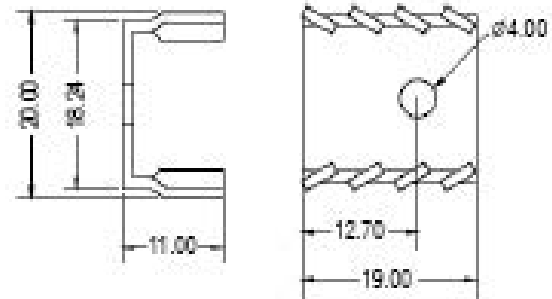
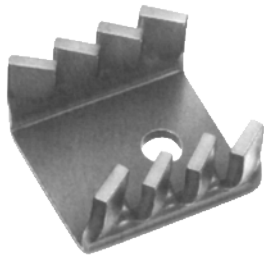
**ATS-PCB1021**



**Product Details**

Length (mm)	Width (mm)	Height (mm)	Tim	Material	Finish	Packaged Cooled	Thermal Resistance (Natural Convection)	R @ 200 LFM	R @ 400 LFM	R @ 600 LFM	R @ 800 LFM
37.3	44.5	9.7	No TIM	Aluminum	Blk Anodized	TO-220	9.6	3.0	1.8	1.0	0.9

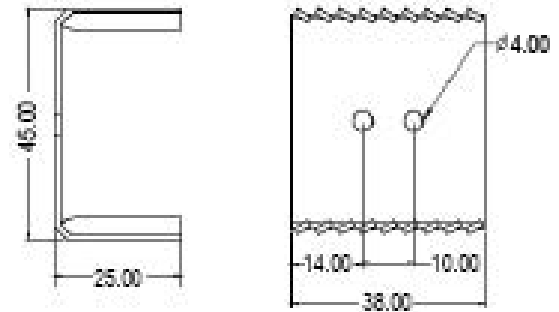
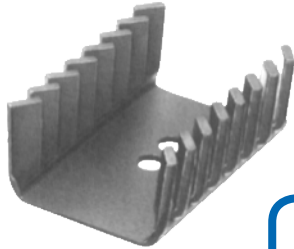
**ATS-PCB1022**



**Product Details**

Length (mm)	Width (mm)	Height (mm)	Tim	Material	Finish	Packaged Cooled	Thermal Resistance (Natural Convection)	R @ 200 LFM	R @ 400 LFM	R @ 600 LFM	R @ 800 LFM
19.0	20.0	11.0	No TIM	Aluminum	Blk Anodized	TO-220	30.0	20.0	14.0	11.0	9.0

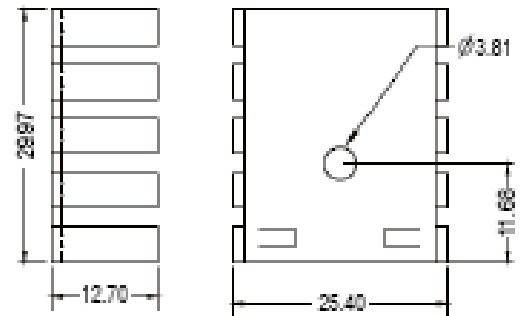
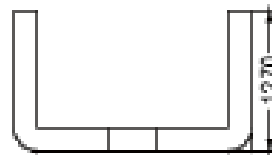
**ATS-PCB1023**



**Product Details**

Length (mm)	Width (mm)	Height (mm)	Tim	Material	Finish	Packaged Cooled	Thermal Resistance (Natural Convection)	R @ 200 LFM	R @ 400 LFM	R @ 600 LFM	R @ 800 LFM
38.0	45.0	25.0	No TIM	Aluminum	Blk Anodized	TO-220	7.2	4.8	3.7	3.0	2.8

**ATS-PCB1024**

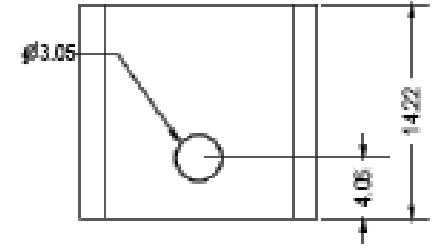
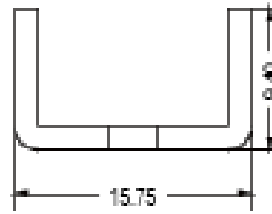


**Product Details**

Length (mm)	Width (mm)	Height (mm)	Tim	Material	Finish	Packaged Cooled	Thermal Resistance (Natural Convection)	R @ 200 LFM	R @ 400 LFM	R @ 600 LFM	R @ 800 LFM
30.0	25.4	12.7	No TIM	Aluminum	Blk Anodized	TO-220	16.7	11.0	7.8	6.0	5.1



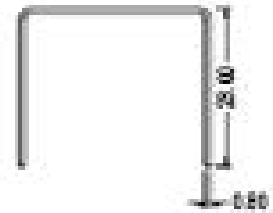
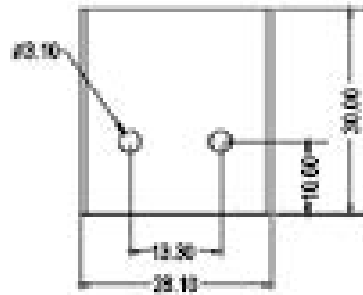
**ATS-PCB1025**



**Product Details**

Length (mm)	Width (mm)	Height (mm)	Tim	Material	Finish	Packaged Cooled	Thermal Resistance (Natural Convection)	R @ 200 LFM	R @ 400 LFM	R @ 600 LFM	R @ 800 LFM
14.2	15.8	9.4	No TIM	Aluminum	Blk Anodized	TO-126	33.0	19.0	14.2	11.8	11.0

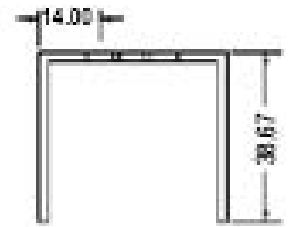
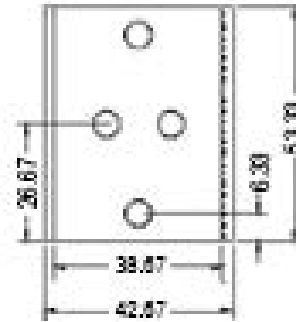
**ATS-PCB1026**



**Product Details**

Length (mm)	Width (mm)	Height (mm)	Tim	Material	Finish	Packaged Cooled	Thermal Resistance (Natural Convection)	R @ 200 LFM	R @ 400 LFM	R @ 600 LFM	R @ 800 LFM
30.0	28.1	23.0	No TIM	Aluminum	Blk Anodized	TO-220	13.0	7.1	4.4	4.0	3.9

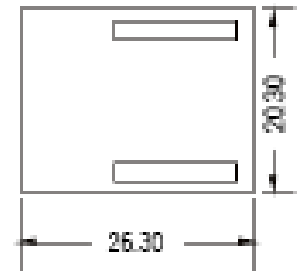
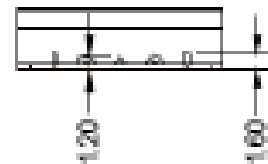
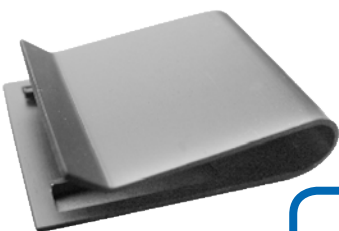
**ATS-PCB1027**



**Product Details**

Length (mm)	Width (mm)	Height (mm)	Tim	Material	Finish	Packaged Cooled	Thermal Resistance (Natural Convection)	R @ 200 LFM	R @ 400 LFM	R @ 600 LFM	R @ 800 LFM
53.3	42.7	38.7	No TIM	Aluminum	Blk Anodized	TO-220	10.0	6.0	4.0	3.5	2.6

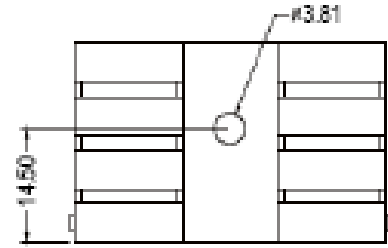
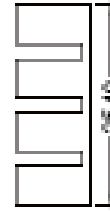
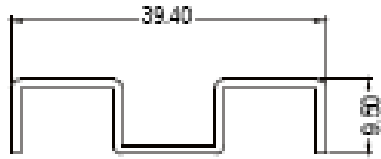
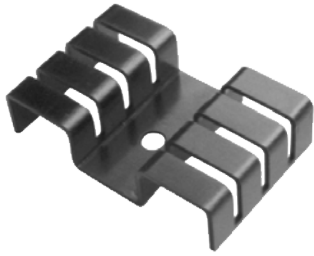
**ATS-PCB1028**



**Product Details**

Length (mm)	Width (mm)	Height (mm)	Tim	Material	Finish	Packaged Cooled	Thermal Resistance (Natural Convection)	R @ 200 LFM	R @ 400 LFM	R @ 600 LFM	R @ 800 LFM
26.3	20.3	6.1	No TIM	Aluminum	Blk Anodized	TO-220	23.0	6.5	4.5	3.3	2.5

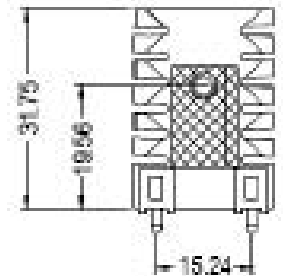
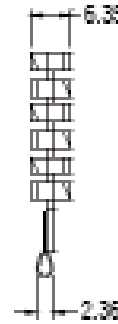
**ATS-PCB1029**



**Product Details**

Length (mm)	Width (mm)	Height (mm)	Tim	Material	Finish	Packaged Cooled	Thermal Resistance (Natural Convection)	R @ 200 LFM	R @ 400 LFM	R @ 600 LFM	R @ 800 LFM
25.4	39.4	9.5	No TIM	Aluminum	Blk Anodized	TO-220	11.0	6.8	5.0	3.7	3.0

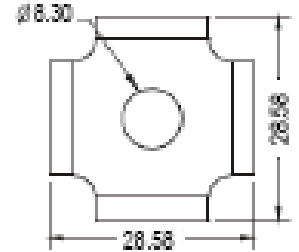
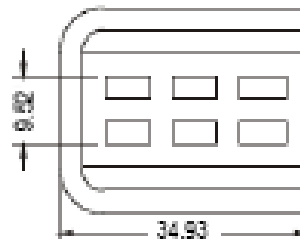
**ATS-PCB1030**



**Product Details**

Length (mm)	Width (mm)	Height (mm)	Tim	Material	Finish	Packaged Cooled	Thermal Resistance (Natural Convection)	R @ 200 LFM	R @ 400 LFM	R @ 600 LFM	R @ 800 LFM
31.8	22.2	6.4	No TIM	Aluminum	Blk Anodized	TO-220	22.0	9.9	5.2	4.2	3.8

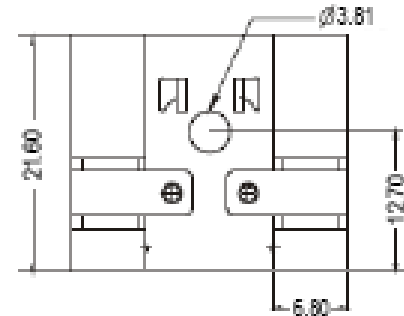
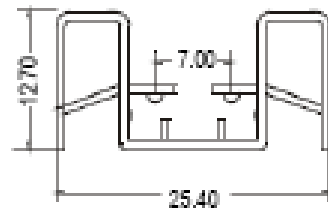
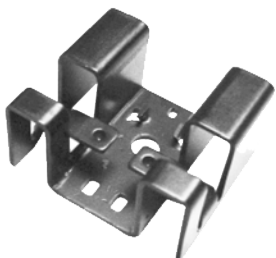
**ATS-PCB1031**



**Product Details**

Length (mm)	Width (mm)	Height (mm)	Tim	Material	Finish	Packaged Cooled	Thermal Resistance (Natural Convection)	R @ 200 LFM	R @ 400 LFM	R @ 600 LFM	R @ 800 LFM
28.6	28.6	34.9	No TIM	Aluminum	Blk Anodized	BRIDGE RECTIFIER	9.0	4.8	3.4	2.3	1.9

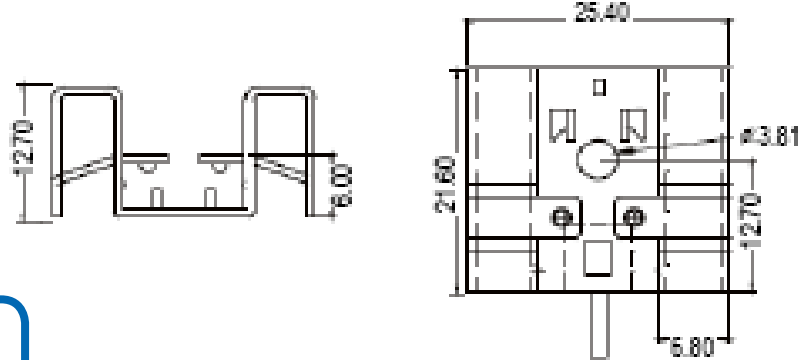
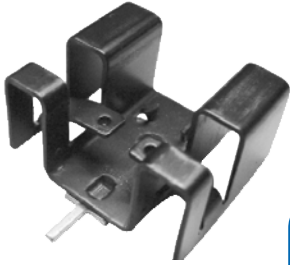
**ATS-PCB1032**



**Product Details**

Length (mm)	Width (mm)	Height (mm)	Tim	Material	Finish	Packaged Cooled	Thermal Resistance (Natural Convection)	R @ 200 LFM	R @ 400 LFM	R @ 600 LFM	R @ 800 LFM
21.6	25.4	12.7	No TIM	Aluminum	Blk Anodized	TO-220	20.0	9.0	6.8	5.3	4.0

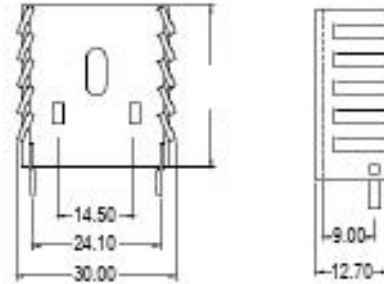
**ATS-PCB1033**



**Product Details**

Length (mm)	Width (mm)	Height (mm)	Tim	Material	Finish	Packaged Cooled	Thermal Resistance (Natural Convection)	R @ 200 LFM	R @ 400 LFM	R @ 600 LFM	R @ 800 LFM
21.6	25.4	12.7	No TIM	Aluminum	Blk Anodized	TO-220	20.0	9.0	6.8	5.3	4.0

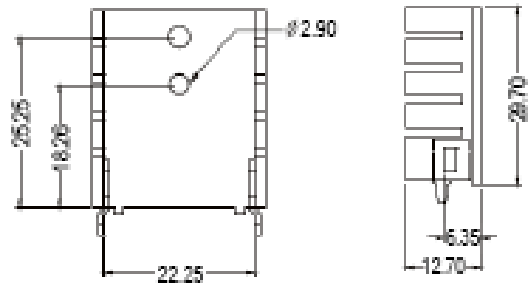
**ATS-PCB1034**



**Product Details**

Length (mm)	Width (mm)	Height (mm)	Tim	Material	Finish	Packaged Cooled	Thermal Resistance (Natural Convection)	R @ 200 LFM	R @ 400 LFM	R @ 600 LFM	R @ 800 LFM
30.2	30.0	12.7	No TIM	Aluminum	Blk Anodized	TO-220	13.0	8.9	6.5	5.2	4.2

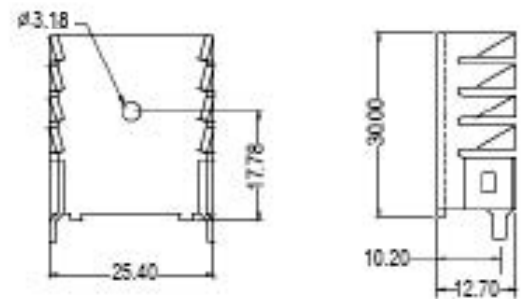
**ATS-PCB1035**



**Product Details**

Length (mm)	Width (mm)	Height (mm)	Tim	Material	Finish	Packaged Cooled	Thermal Resistance (Natural Convection)	R @ 200 LFM	R @ 400 LFM	R @ 600 LFM	R @ 800 LFM
30.0	25.4	12.7	No TIM	Aluminum	Blk Anodized	TO-220	12.5	7.3	5.6	4.7	4.2

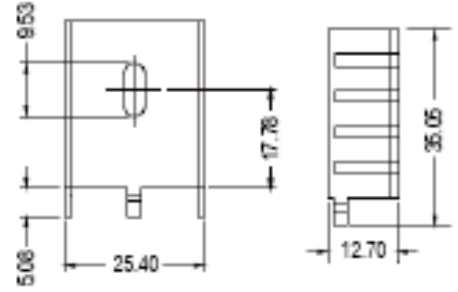
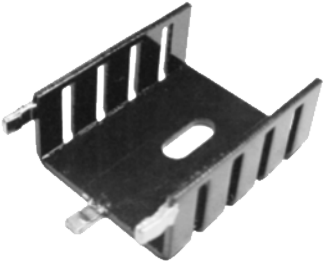
**ATS-PCB1036**



**Product Details**

Length (mm)	Width (mm)	Height (mm)	Tim	Material	Finish	Packaged Cooled	Thermal Resistance (Natural Convection)	R @ 200 LFM	R @ 400 LFM	R @ 600 LFM	R @ 800 LFM
30.0	25.4	12.7	No TIM	Aluminum	Blk Anodized	TO-220	13.4	7.0	5.0	4.0	3.7

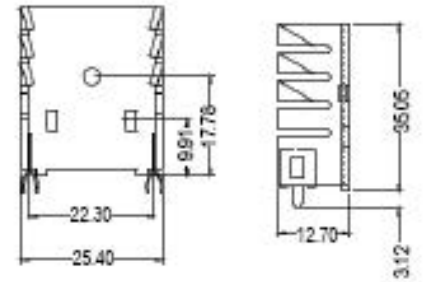
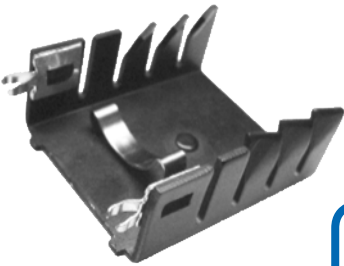
**ATS-PCB1037**



**Product Details**

Length (mm)	Width (mm)	Height (mm)	Tim	Material	Finish	Packaged Cooled	Thermal Resistance (Natural Convection)	R @ 200 LFM	R @ 400 LFM	R @ 600 LFM	R @ 800 LFM
35.1	25.4	12.7	No TIM	Aluminum	Blk Anodized	TO-220	18.0	13.0	9.1	7.5	6.6

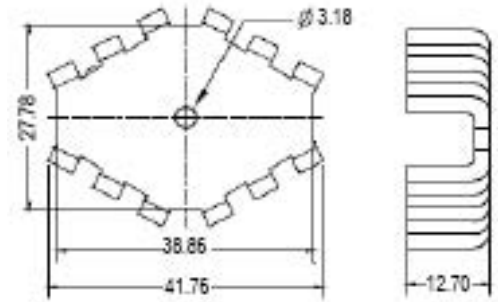
**ATS-PCB1038**



**Product Details**

Length (mm)	Width (mm)	Height (mm)	Tim	Material	Finish	Packaged Cooled	Thermal Resistance (Natural Convection)	R @ 200 LFM	R @ 400 LFM	R @ 600 LFM	R @ 800 LFM
30.0	25.4	12.7	No TIM	Aluminum	Blk Anodized	TO-220	13.4	7.0	5.1	4.0	2.2

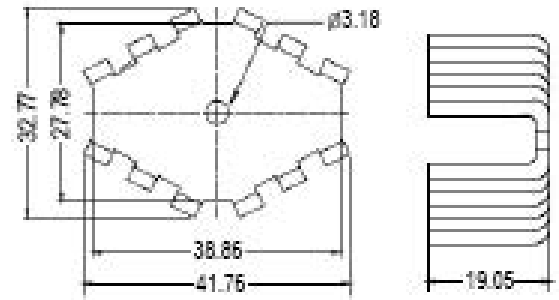
**ATS-PCB1039**



**Product Details**

Length (mm)	Width (mm)	Height (mm)	Tim	Material	Finish	Packaged Cooled	Thermal Resistance (Natural Convection)	R @ 200 LFM	R @ 400 LFM	R @ 600 LFM	R @ 800 LFM
41.8	32.8	12.7	No TIM	Aluminum	Blk Anodized	TO-220	15.6	5.6	3.6	3.0	2.9

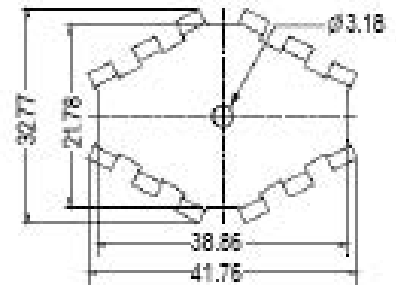
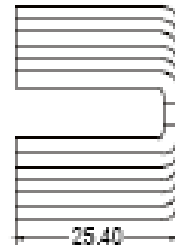
**ATS-PCB1040**



**Product Details**

Length (mm)	Width (mm)	Height (mm)	Tim	Material	Finish	Packaged Cooled	Thermal Resistance (Natural Convection)	R @ 200 LFM	R @ 400 LFM	R @ 600 LFM	R @ 800 LFM
41.8	32.8	19.1	No TIM	Aluminum	Blk Anodized	TO-220	13.4	3.9	2.8	2.6	2.3

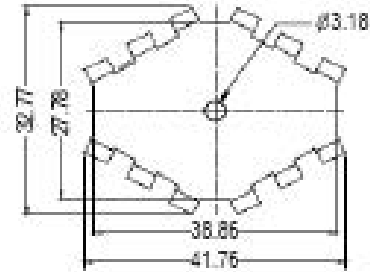
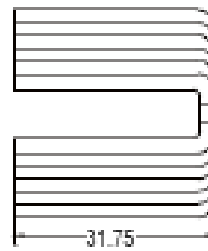
**ATS-PCB1041**



**Product Details**

Length (mm)	Width (mm)	Height (mm)	Tim	Material	Finish	Packaged Cooled	Thermal Resistance (Natural Convection)	R @ 200 LFM	R @ 400 LFM	R @ 600 LFM	R @ 800 LFM
41.8	32.8	25.4	No TIM	Aluminum	Blk Anodized	TO-220	11.0	3.8	2.5	2.1	2.0

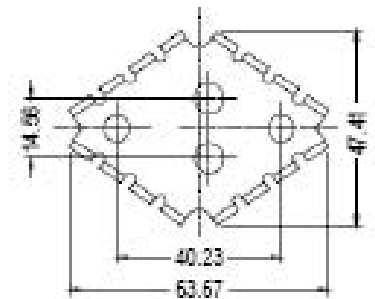
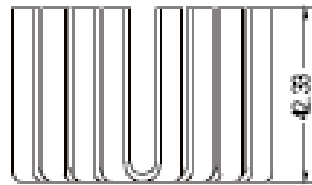
**ATS-PCB1042**



**Product Details**

Length (mm)	Width (mm)	Height (mm)	Tim	Material	Finish	Packaged Cooled	Thermal Resistance (Natural Convection)	R @ 200 LFM	R @ 400 LFM	R @ 600 LFM	R @ 800 LFM
41.8	32.8	31.8	No TIM	Aluminum	Blk Anodized	TO-220	9.8	3.5	2.3	2.1	2.0

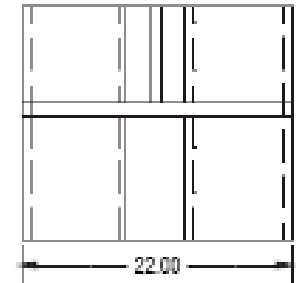
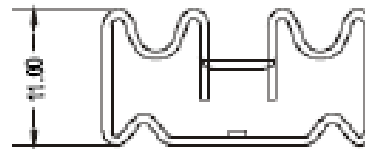
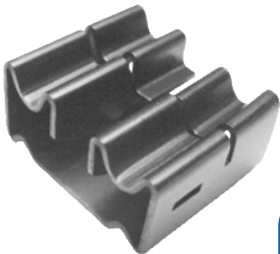
**ATS-PCB1043**



**Product Details**

Length (mm)	Width (mm)	Height (mm)	Tim	Material	Finish	Packaged Cooled	Thermal Resistance (Natural Convection)	R @ 200 LFM	R @ 400 LFM	R @ 600 LFM	R @ 800 LFM
63.7	47.4	42.3	No TIM	Aluminum	Blk Anodized	TO-3	7.5	2.6	2.1	1.7	1.3

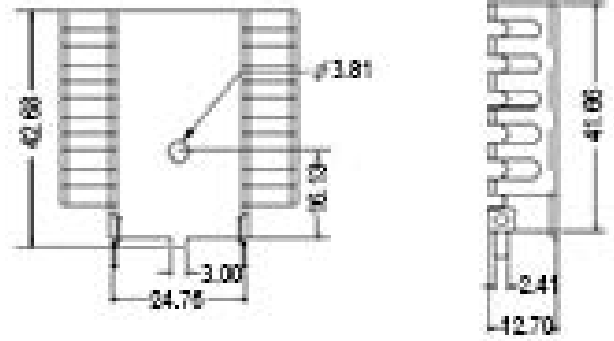
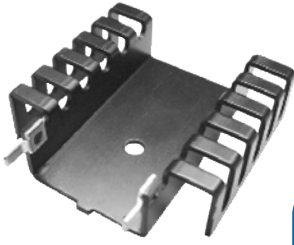
**ATS-PCB1044**



**Product Details**

Length (mm)	Width (mm)	Height (mm)	Tim	Material	Finish	Packaged Cooled	Thermal Resistance (Natural Convection)	R @ 200 LFM	R @ 400 LFM	R @ 600 LFM	R @ 800 LFM
19.0	22.0	11.0	No TIM	Aluminum	Blk Anodized	TO-220	23.7	11.2	8.3	6.0	5.0

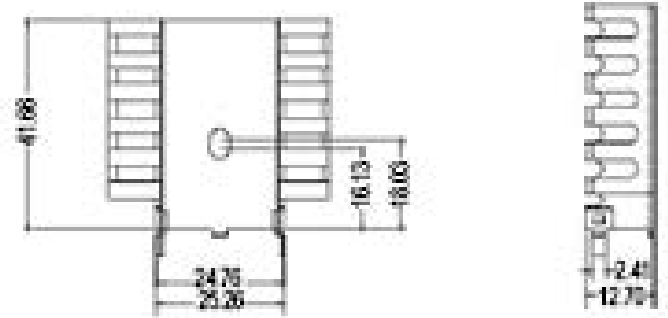
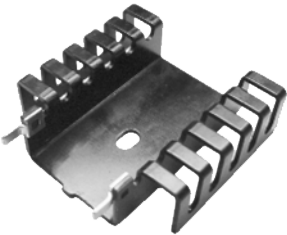
**ATS-PCB1045**



**Product Details**

Length (mm)	Width (mm)	Height (mm)	Tim	Material	Finish	Packaged Cooled	Thermal Resistance (Natural Convection)	R @ 200 LFM	R @ 400 LFM	R @ 600 LFM	R @ 800 LFM
41.7	43.2	12.7	No TIM	Aluminum	Blk Anodized	TO-220,TO-218,TO-247	8.6	6.3	4.5	3.5	2.8

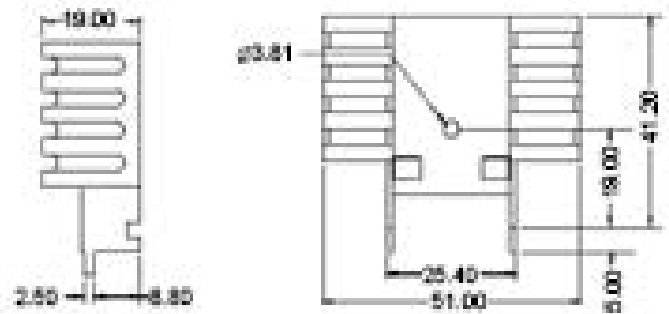
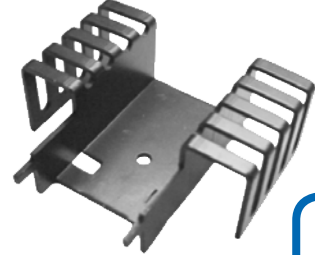
**ATS-PCB1046**



**Product Details**

Length (mm)	Width (mm)	Height (mm)	Tim	Material	Finish	Packaged Cooled	Thermal Resistance (Natural Convection)	R @ 200 LFM	R @ 400 LFM	R @ 600 LFM	R @ 800 LFM
41.2	43.2	12.7	No TIM	Aluminum	Blk Anodized	TO-220, TO-218	8.6	6.3	4.5	3.5	2.8

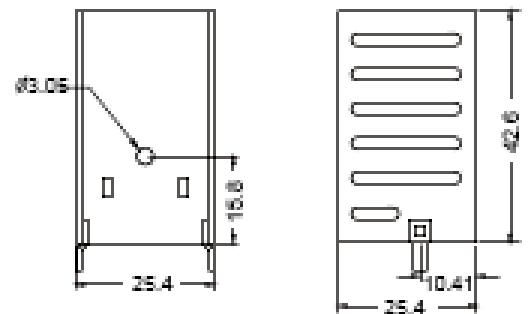
**ATS-PCB1047**



**Product Details**

Length (mm)	Width (mm)	Height (mm)	Tim	Material	Finish	Packaged Cooled	Thermal Resistance (Natural Convection)	R @ 200 LFM	R @ 400 LFM	R @ 600 LFM	R @ 800 LFM
46.2	51.0	19.0	No TIM	Aluminum	Blk Anodized	TO-218, TO-247	8.0	2.4	1.8	1.2	1.0

**ATS-PCB1048**

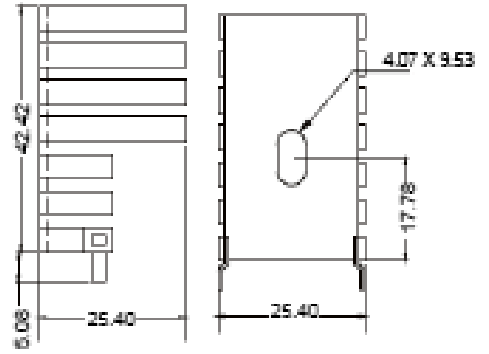


**Product Details**

Length (mm)	Width (mm)	Height (mm)	Tim	Material	Finish	Packaged Cooled	Thermal Resistance (Natural Convection)	R @ 200 LFM	R @ 400 LFM	R @ 600 LFM	R @ 800 LFM
42.6	25.4	25.4	No TIM	Aluminum	Blk Anodized	TO-220	13.0	8.0	6.5	5.4	4.9



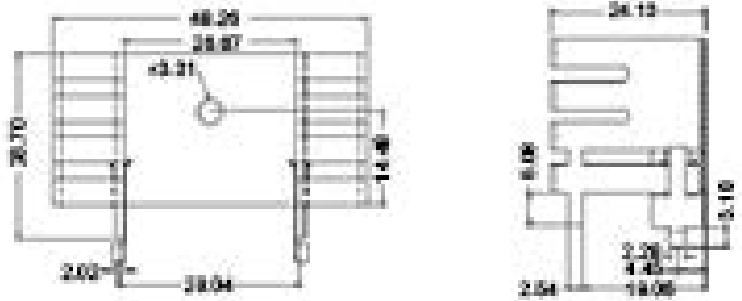
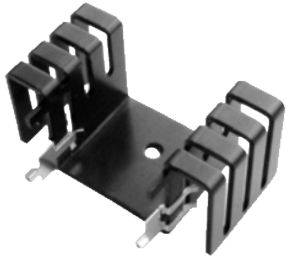
## ATS-PCB1049



### Product Details

Length (mm)	Width (mm)	Height (mm)	Tim	Material	Finish	Packaged Cooled	Thermal Resistance (Natural Convection)	R @ 200 LFM	R @ 400 LFM	R @ 600 LFM	R @ 800 LFM
42.4	25.4	25.4	No TIM	Aluminum	Blk Anodized	TO-220	10.0	4.4	3.6	3.0	2.8

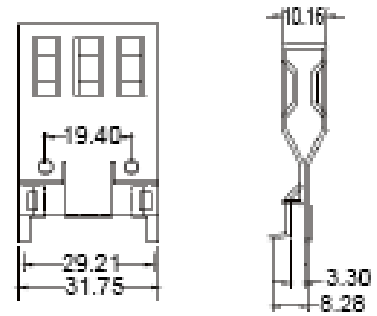
## ATS-PCB1050



### Product Details

Length (mm)	Width (mm)	Height (mm)	Tim	Material	Finish	Packaged Cooled	Thermal Resistance (Natural Convection)	R @ 200 LFM	R @ 400 LFM	R @ 600 LFM	R @ 800 LFM
28.7	48.3	24.1	No TIM	Aluminum	Blk Anodized	TO-220	6.8	4.9	3.5	2.5	2.2

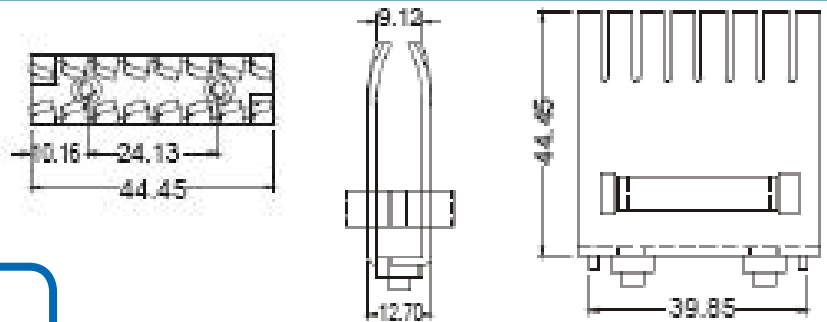
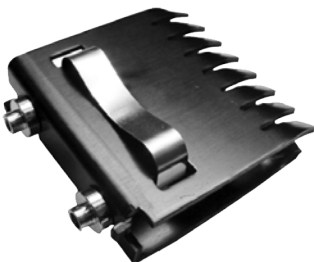
## ATS-PCB1051



### Product Details

Length (mm)	Width (mm)	Height (mm)	Tim	Material	Finish	Packaged Cooled	Thermal Resistance (Natural Convection)	R @ 200 LFM	R @ 400 LFM	R @ 600 LFM	R @ 800 LFM
43.2	31.8	10.2	No TIM	Aluminum	Blk Anodized	12-SIP	10.0	4.5	3.1	2.3	1.6

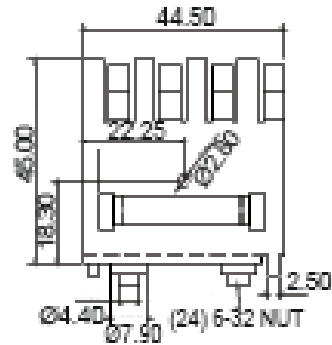
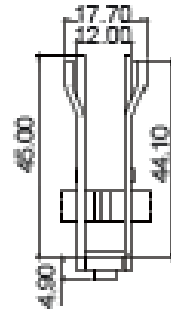
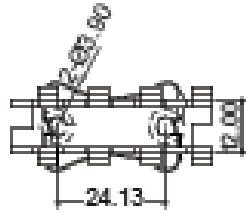
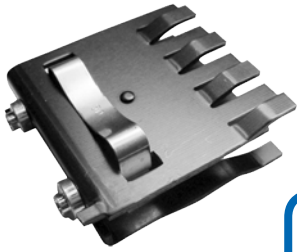
## ATS-PCB1052



### Product Details

Length (mm)	Width (mm)	Height (mm)	Tim	Material	Finish	Packaged Cooled	Thermal Resistance (Natural Convection)	R @ 200 LFM	R @ 400 LFM	R @ 600 LFM	R @ 800 LFM
44.5	12.7	44.5	No TIM	Aluminum	Blk Anodized	TO-220, TO-218, TO-247	6.3	2.3	1.5	1.1	0.8

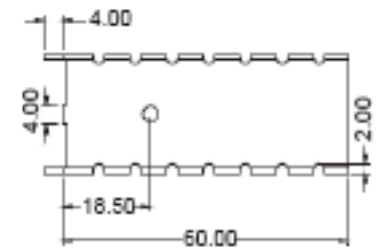
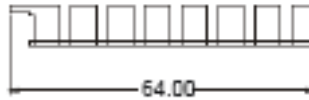
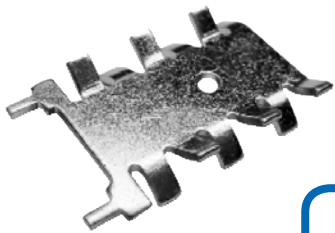
**ATS-PCB1053**



**Product Details**

Length (mm)	Width (mm)	Height (mm)	Tim	Material	Finish	Packaged Cooled	Thermal Resistance (Natural Convection)	R @ 200 LFM	R @ 400 LFM	R @ 600 LFM	R @ 800 LFM
44.5	17.7	45.0	No TIM	Aluminum	Blk Anodized	TO-220	6.3	2.7	2.0	1.5	1.1

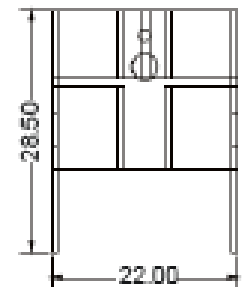
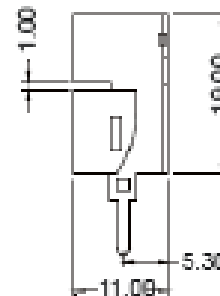
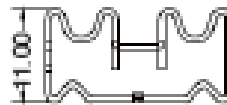
**ATS-PCB1054**



**Product Details**

Length (mm)	Width (mm)	Height (mm)	Tim	Material	Finish	Packaged Cooled	Thermal Resistance (Natural Convection)	R @ 200 LFM	R @ 400 LFM	R @ 600 LFM	R @ 800 LFM
60.0	25.0	8.5	No TIM	Aluminum	Blk Anodized	TO-220	12.0	6.7	5.7	5.2	4.8

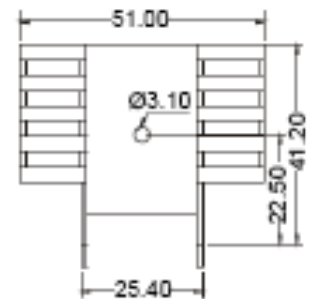
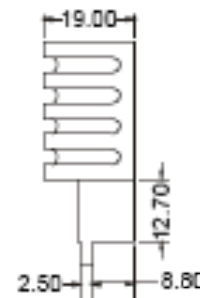
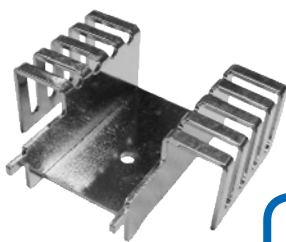
**ATS-PCB1055**



**Product Details**

Length (mm)	Width (mm)	Height (mm)	Tim	Material	Finish	Packaged Cooled	Thermal Resistance (Natural Convection)	R @ 200 LFM	R @ 400 LFM	R @ 600 LFM	R @ 800 LFM
19.0	22.0	11.0	No TIM	Aluminum	Blk Anodized	TO-220	23.7	11.2	8.3	6.0	5.0

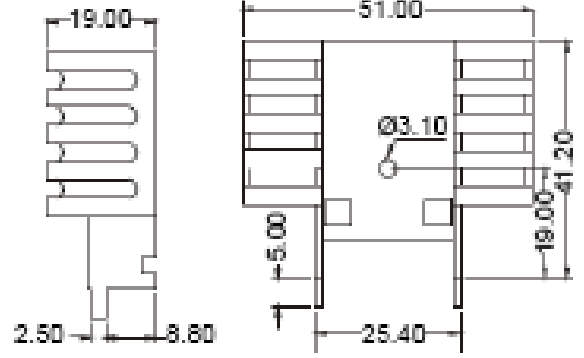
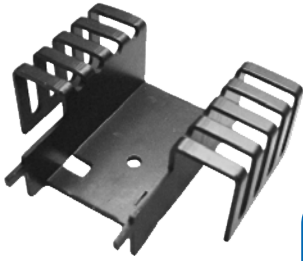
**ATS-PCB1056**



**Product Details**

Length (mm)	Width (mm)	Height (mm)	Tim	Material	Finish	Packaged Cooled	Thermal Resistance (Natural Convection)	R @ 200 LFM	R @ 400 LFM	R @ 600 LFM	R @ 800 LFM
41.2	51.0	19.0	No TIM	Aluminum	Blk Anodized	TO-218, TO-247	8.0	2.4	1.8	1.2	1.0

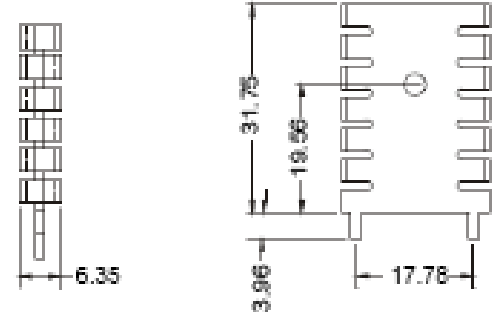
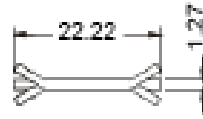
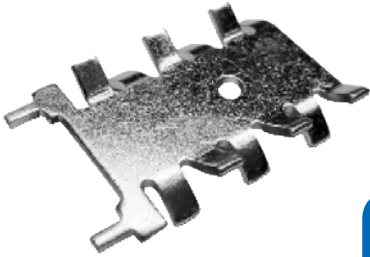
**ATS-PCB1057**



**Product Details**

Length (mm)	Width (mm)	Height (mm)	Tim	Material	Finish	Packaged Cooled	Thermal Resistance (Natural Convection)	R @ 200 LFM	R @ 400 LFM	R @ 600 LFM	R @ 800 LFM
41.2	51.0	19.0	No TIM	Aluminum	Blk Anodized	TO-220	8.0	2.4	1.8	1.2	1.0

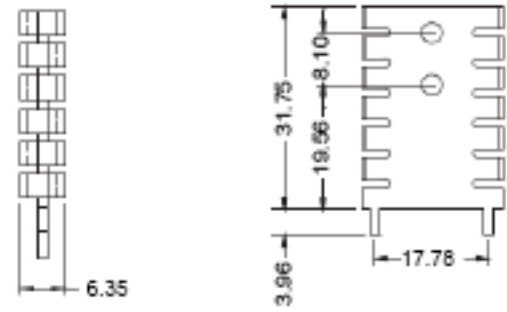
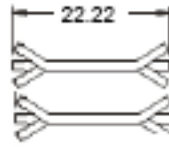
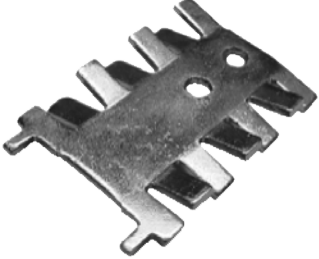
**ATS-PCB1058**



**Product Details**

Length (mm)	Width (mm)	Height (mm)	Tim	Material	Finish	Packaged Cooled	Thermal Resistance (Natural Convection)	R @ 200 LFM	R @ 400 LFM	R @ 600 LFM	R @ 800 LFM
31.8	22.2	6.4	No TIM	Copper	Tin Plated	TO-220	24.0	8.8	6.1	4.1	4.0

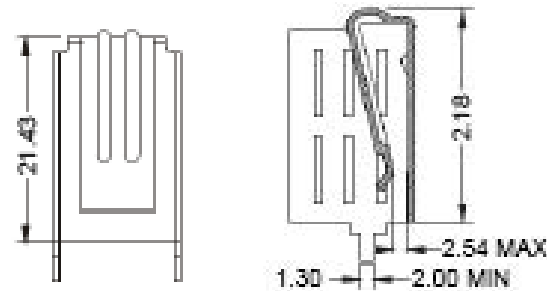
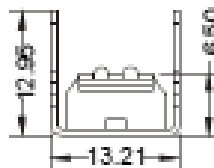
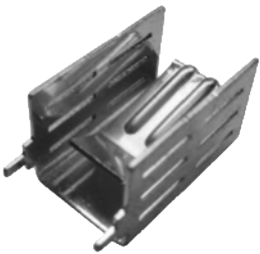
**ATS-PCB1059**



**Product Details**

Length (mm)	Width (mm)	Height (mm)	Tim	Material	Finish	Packaged Cooled	Thermal Resistance (Natural Convection)	R @ 200 LFM	R @ 400 LFM	R @ 600 LFM	R @ 800 LFM
31.8	22.2	6.4	No TIM	Copper	Tin Plated	TO-220	24.0	8.8	6.1	4.1	4.0

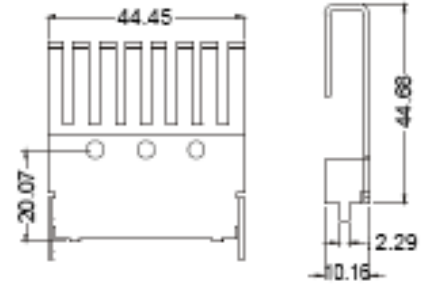
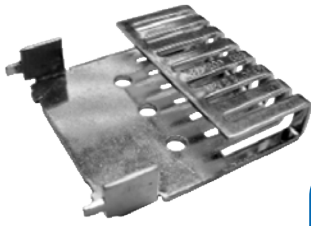
**ATS-PCB1060**



**Product Details**

Length (mm)	Width (mm)	Height (mm)	Tim	Material	Finish	Packaged Cooled	Thermal Resistance (Natural Convection)	R @ 200 LFM	R @ 400 LFM	R @ 600 LFM	R @ 800 LFM
21.8	13.2	13.0	No TIM	Copper	Tin Plated	TO-220	19.7	8.0	6.8	5.7	5.0

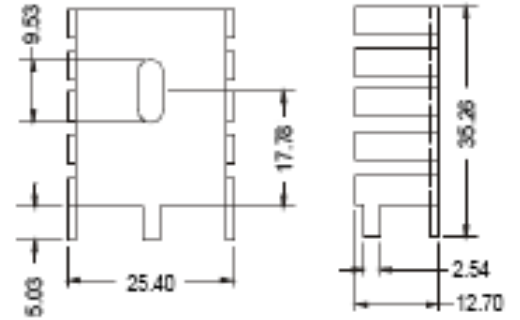
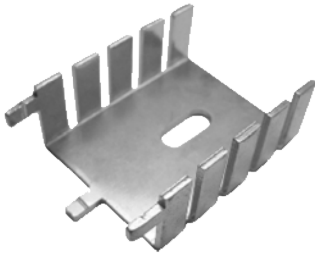
**ATS-PCB1061**



**Product Details**

Length (mm)	Width (mm)	Height (mm)	Tim	Material	Finish	Packaged Cooled	Thermal Resistance (Natural Convection)	R @ 200 LFM	R @ 400 LFM	R @ 600 LFM	R @ 800 LFM
44.7	44.5	10.2	No TIM	Copper	Tin Plated	TO-126	15.0	6.5	5.1	4.3	3.6

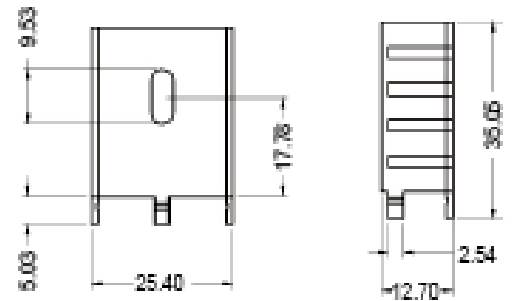
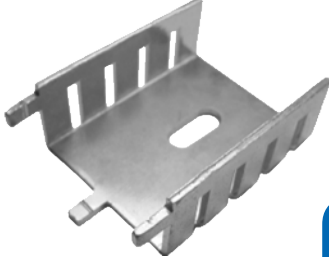
**ATS-PCB1062**



**Product Details**

Length (mm)	Width (mm)	Height (mm)	Tim	Material	Finish	Packaged Cooled	Thermal Resistance (Natural Convection)	R @ 200 LFM	R @ 400 LFM	R @ 600 LFM	R @ 800 LFM
30.0	25.4	12.7	No TIM	Copper	Tin Plated	TO-220	13.0	7.0	5.0	4.0	3.1

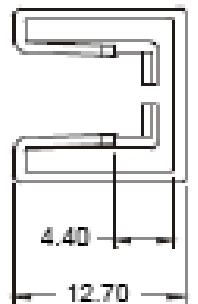
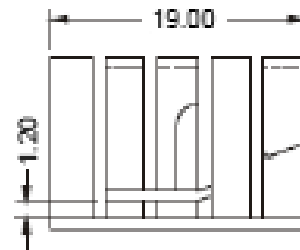
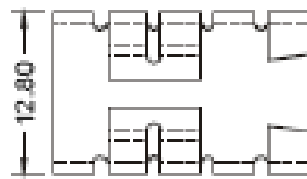
**ATS-PCB1063**



**Product Details**

Length (mm)	Width (mm)	Height (mm)	Tim	Material	Finish	Packaged Cooled	Thermal Resistance (Natural Convection)	R @ 200 LFM	R @ 400 LFM	R @ 600 LFM	R @ 800 LFM
30.0	25.4	12.7	No TIM	Copper	Tin Plated	TO-220	18.0	13.0	9.1	7.5	6.8

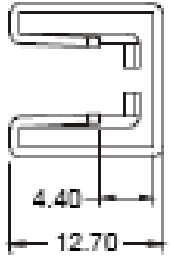
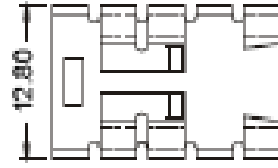
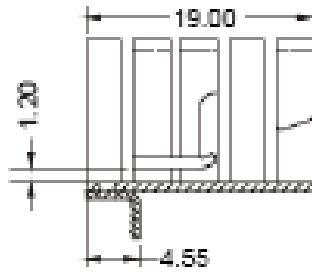
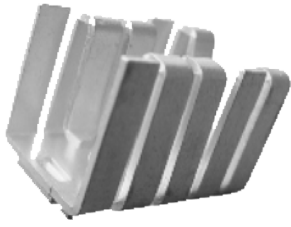
**ATS-PCB1064**



**Product Details**

Length (mm)	Width (mm)	Height (mm)	Tim	Material	Finish	Packaged Cooled	Thermal Resistance (Natural Convection)	R @ 200 LFM	R @ 400 LFM	R @ 600 LFM	R @ 800 LFM
19.0	12.8	12.7	No TIM	Aluminum	Blk Anodized	TO-220	27.3	10.2	7.0	5.6	4.8

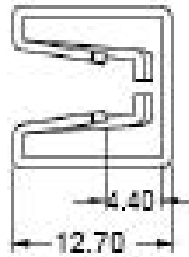
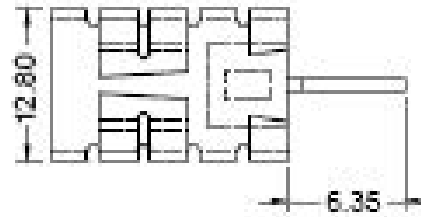
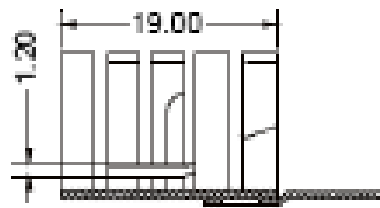
**ATS-PCB1065**



**Product Details**

Length (mm)	Width (mm)	Height (mm)	Tim	Material	Finish	Packaged Cooled	Thermal Resistance (Natural Convection)	R @ 200 LFM	R @ 400 LFM	R @ 600 LFM	R @ 800 LFM
19.0	12.8	12.7	No TIM	Aluminum	Blk Anodized	TO-220	27.3	10.2	7.0	5.6	4.8

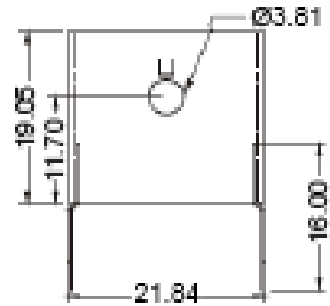
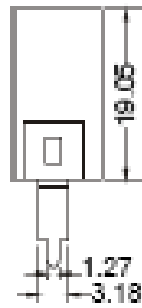
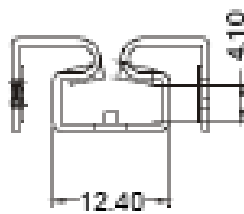
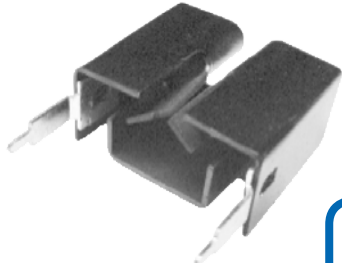
**ATS-PCB1066**



**Product Details**

Length (mm)	Width (mm)	Height (mm)	Tim	Material	Finish	Packaged Cooled	Thermal Resistance (Natural Convection)	R @ 200 LFM	R @ 400 LFM	R @ 600 LFM	R @ 800 LFM
19.0	12.8	12.7	No TIM	Aluminum	Blk Anodized	TO-220, TO-262	27.3	10.2	7.0	5.6	4.8

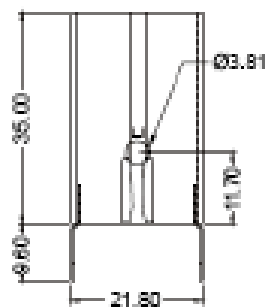
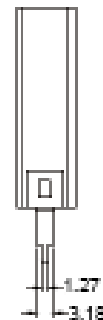
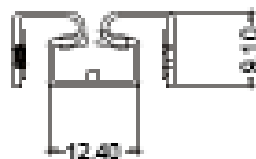
**ATS-PCB1067**



**Product Details**

Length (mm)	Width (mm)	Height (mm)	Tim	Material	Finish	Packaged Cooled	Thermal Resistance (Natural Convection)	R @ 200 LFM	R @ 400 LFM	R @ 600 LFM	R @ 800 LFM
19.1	21.8	9.9	No TIM	Aluminum	Blk Anodized	TO-220	21.2	10.5	8.0	5.9	4.8

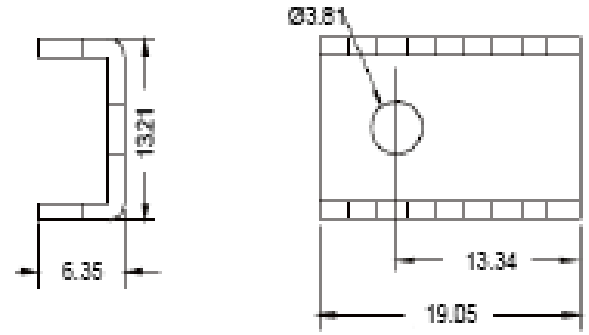
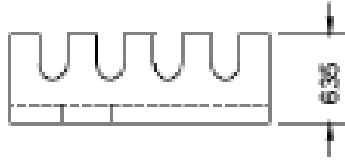
**ATS-PCB1068**



**Product Details**

Length (mm)	Width (mm)	Height (mm)	Tim	Material	Finish	Packaged Cooled	Thermal Resistance (Natural Convection)	R @ 200 LFM	R @ 400 LFM	R @ 600 LFM	R @ 800 LFM
34.9	21.8	9.1	No TIM	Aluminum	Blk Anodized	TO-220	16.0	11.0	8.1	6.0	4.8

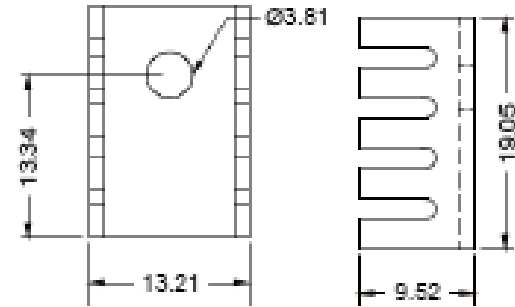
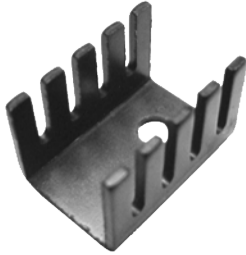
**ATS-PCB1069**



**Product Details**

Length (mm)	Width (mm)	Height (mm)	Tim	Material	Finish	Packaged Cooled	Thermal Resistance (Natural Convection)	R @ 200 LFM	R @ 400 LFM	R @ 600 LFM	R @ 800 LFM
19.1	13.2	6.4	No TIM	Aluminum	Blk Anodized	TO-220	32.0	15.8	11.2	9.2	7.8

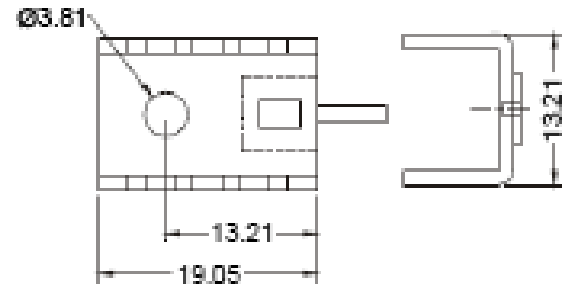
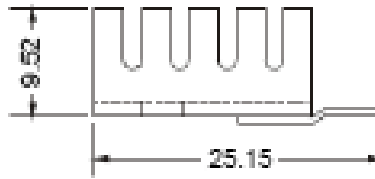
**ATS-PCB1070**



**Product Details**

Length (mm)	Width (mm)	Height (mm)	Tim	Material	Finish	Packaged Cooled	Thermal Resistance (Natural Convection)	R @ 200 LFM	R @ 400 LFM	R @ 600 LFM	R @ 800 LFM
19.1	13.2	9.5	No TIM	Aluminum	Blk Anodized	TO-220	25.9	15.8	11.2	9.2	7.8

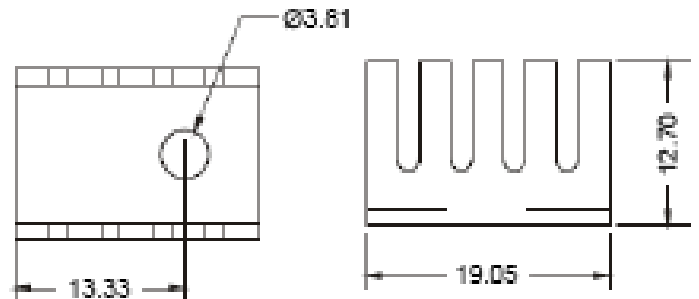
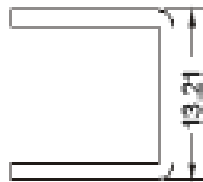
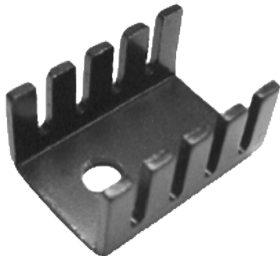
**ATS-PCB1071**



**Product Details**

Length (mm)	Width (mm)	Height (mm)	Tim	Material	Finish	Packaged Cooled	Thermal Resistance (Natural Convection)	R @ 200 LFM	R @ 400 LFM	R @ 600 LFM	R @ 800 LFM
19.1	13.2	9.5	No TIM	Aluminum	Blk Anodized	TO-220	25.9	15.6	11.0	9.0	7.6

**ATS-PCB1072**

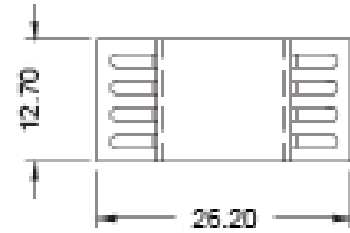
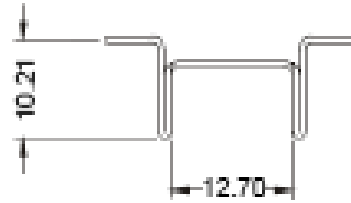
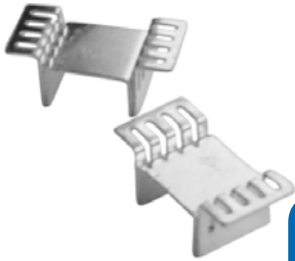


**Product Details**

Length (mm)	Width (mm)	Height (mm)	Tim	Material	Finish	Packaged Cooled	Thermal Resistance (Natural Convection)	R @ 200 LFM	R @ 400 LFM	R @ 600 LFM	R @ 800 LFM
19.1	13.2	12.7	No TIM	Aluminum	Blk Anodized	TO-220	24.4	9.5	7.0	6.3	6.0



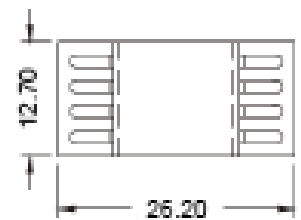
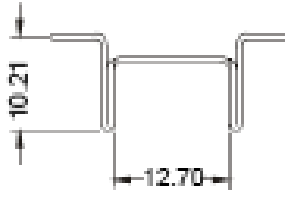
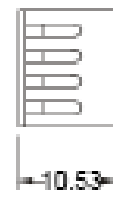
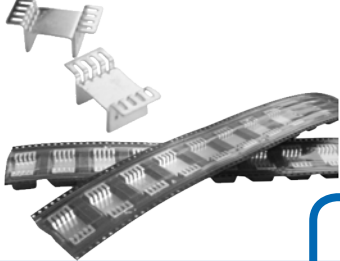
## ATS-PCB1073



### Product Details

Length (mm)	Width (mm)	Height (mm)	Tim	Material	Finish	Packaged Cooled	Thermal Resistance (Natural Convection)	R @ 200 LFM	R @ 400 LFM	R @ 600 LFM	R @ 800 LFM
12.7	26.2	10.2	No TIM	Copper	Tin Plated	TO-263	18.0	9.5	6.8	5.2	5.0

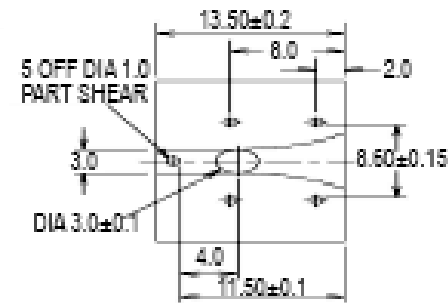
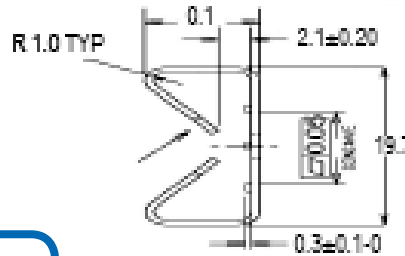
## ATS-PCB1074



### Product Details

Length (mm)	Width (mm)	Height (mm)	Tim	Material	Finish	Packaged Cooled	Thermal Resistance (Natural Convection)	R @ 200 LFM	R @ 400 LFM	R @ 600 LFM	R @ 800 LFM
12.7	26.2	10.2	No TIM	Copper	Tin Plated	TO-263	18.0	9.5	6.8	5.2	5.0

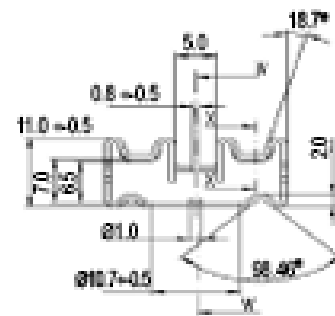
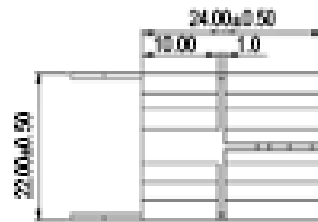
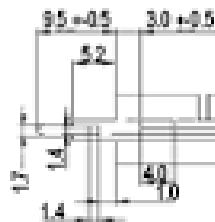
## ATS-PCBT1075



### Product Details

Length (mm)	Width (mm)	Height (mm)	Tim	Material	Finish	Packaged Cooled	Thermal Resistance (Natural Convection)	R @ 200 LFM	R @ 400 LFM	R @ 600 LFM	R @ 800 LFM
13.2	19.7	8.1	No TIM	Aluminum	Blk Anodized	TO-126	35.8	25.0	17.0	14.0	12.0

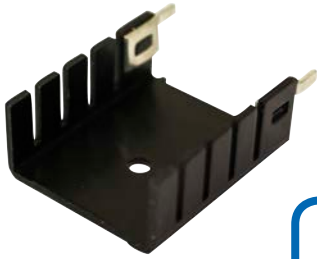
## ATS-PCBT1076



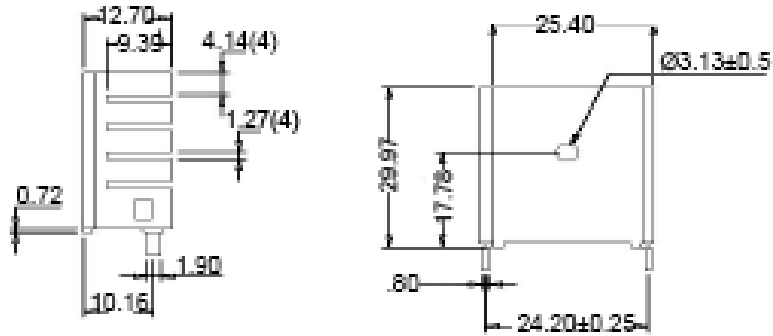
### Product Details

Length (mm)	Width (mm)	Height (mm)	Tim	Material	Finish	Packaged Cooled	Thermal Resistance (Natural Convection)	R @ 200 LFM	R @ 400 LFM	R @ 600 LFM	R @ 800 LFM
24.0	22.0	11.0	No TIM	Aluminum	Blk Anodized	TO-220	17.3	15.0	10.5	9.8	9.4

**ATS-PCBT1077**



**Product Details**

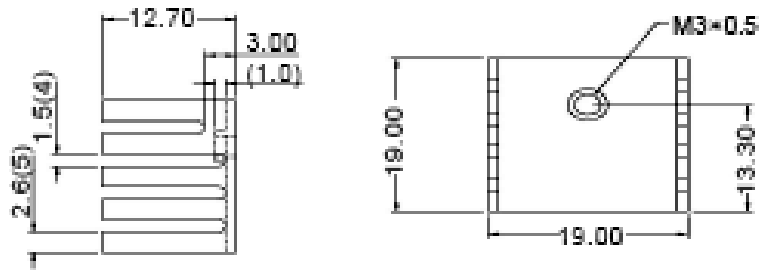


Length (mm)	Width (mm)	Height (mm)	Tim	Material	Finish	Packaged Cooled	Thermal Resistance (Natural Convection)	R @ 200 LFM	R @ 400 LFM	R @ 600 LFM	R @ 800 LFM
30.0	25.4	12.7	No TIM	Aluminum	Blk Anodized	TO-220	12.5	7.3	5.3	4.8	4.1

**ATS-PCBT1078**



**Product Details**

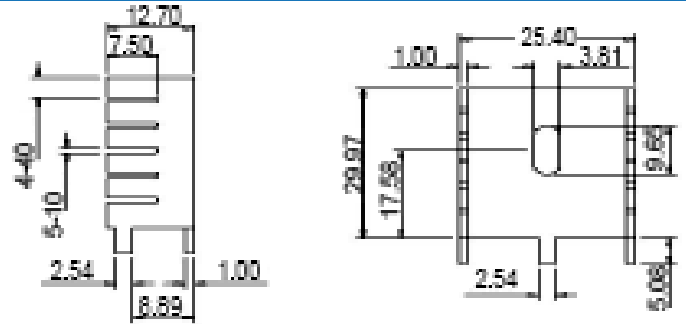


Length (mm)	Width (mm)	Height (mm)	Tim	Material	Finish	Packaged Cooled	Thermal Resistance (Natural Convection)	R @ 200 LFM	R @ 400 LFM	R @ 600 LFM	R @ 800 LFM
19.0	19.0	12.7	No TIM	Aluminum	Blk Anodized	TO-220	22.0	8.9	5.9	4.2	4.0

**ATS-PCBT1079**



**Product Details**

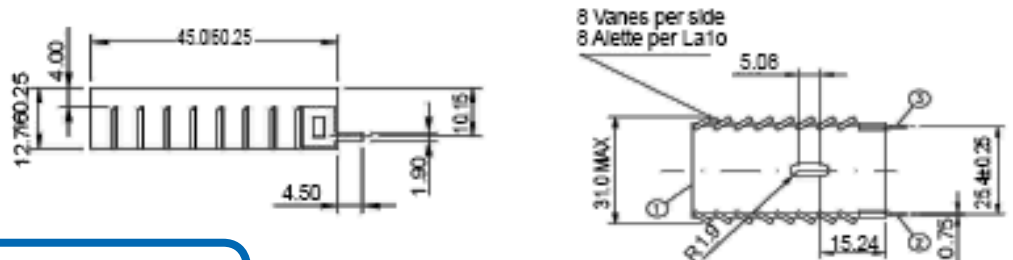


Length (mm)	Width (mm)	Height (mm)	Tim	Material	Finish	Packaged Cooled	Thermal Resistance (Natural Convection)	R @ 200 LFM	R @ 400 LFM	R @ 600 LFM	R @ 800 LFM
30.0	25.4	12.7	No TIM	Aluminum	Blk Anodized	TO-220	13.0	7.1	4.8	3.9	3.4

**ATS-PCBT1080**

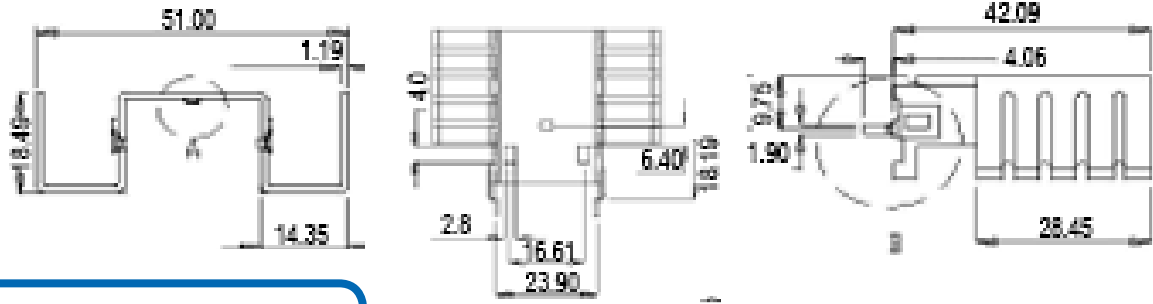
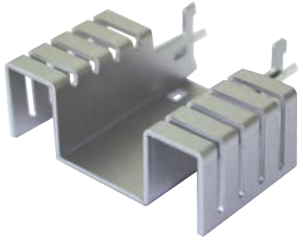


**Product Details**



Length (mm)	Width (mm)	Height (mm)	Tim	Material	Finish	Packaged Cooled	Thermal Resistance (Natural Convection)	R @ 200 LFM	R @ 400 LFM	R @ 600 LFM	R @ 800 LFM
45.0	31.0	12.7	No TIM	Aluminum	Blk Anodized	TO-218, TO-220	13.0	9.0	7.0	7.0	7.0

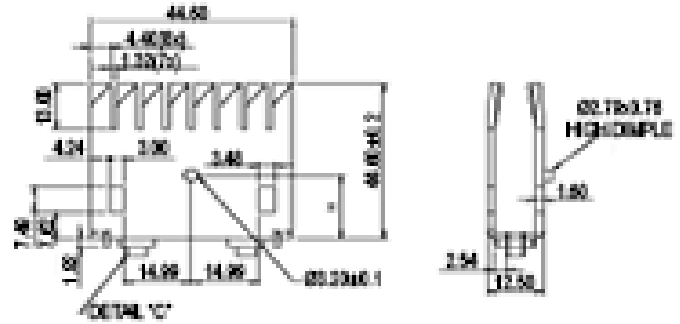
**ATS-PCBT1081**



**Product Details**

Length (mm)	Width (mm)	Height (mm)	Tim	Material	Finish	Packaged Cooled	Thermal Resistance (Natural Convection)	R @ 200 LFM	R @ 400 LFM	R @ 600 LFM	R @ 800 LFM
42.1	51.0	18.5	No TIM	Aluminum	Blk Anodized	TO-220	6.7	1.8	1.2	0.8	0.6

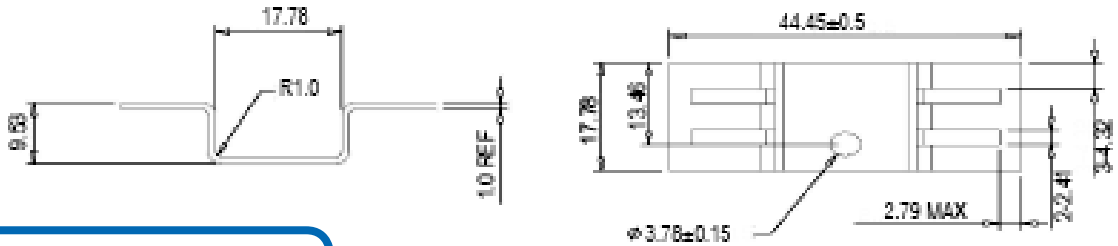
**ATS-PCBT1082**



**Product Details**

Length (mm)	Width (mm)	Height (mm)	Tim	Material	Finish	Packaged Cooled	Thermal Resistance (Natural Convection)	R @ 200 LFM	R @ 400 LFM	R @ 600 LFM	R @ 800 LFM
44.6	12.5	44.6	No TIM	Aluminum	Blk Anodized	TO-218	6.3	2.1	1.3	0.9	0.7

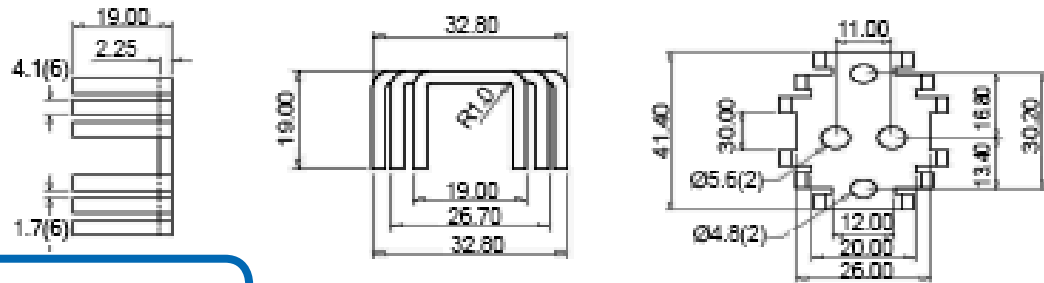
**ATS-PCBT1083**



**Product Details**

Length (mm)	Width (mm)	Height (mm)	Tim	Material	Finish	Packaged Cooled	Thermal Resistance (Natural Convection)	R @ 200 LFM	R @ 400 LFM	R @ 600 LFM	R @ 800 LFM
17.8	44.5	9.5	No TIM	Aluminum	Blk Anodized	TO-220	17.0	6.6	4.9	3.5	3.0

**ATS-PCBT1084**

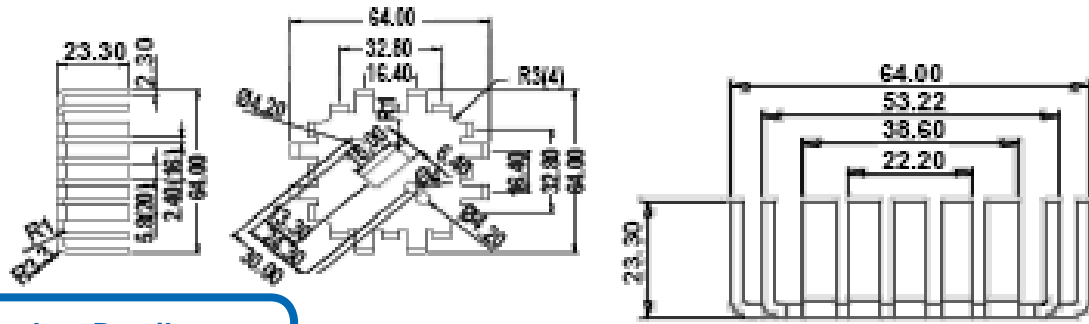


**Product Details**

Length (mm)	Width (mm)	Height (mm)	Tim	Material	Finish	Packaged Cooled	Thermal Resistance (Natural Convection)	R @ 200 LFM	R @ 400 LFM	R @ 600 LFM	R @ 800 LFM
41.4	32.8	19.0	No TIM	Aluminum	Blk Anodized	TO-3	13.5	4.4	3.1	2.1	1.5



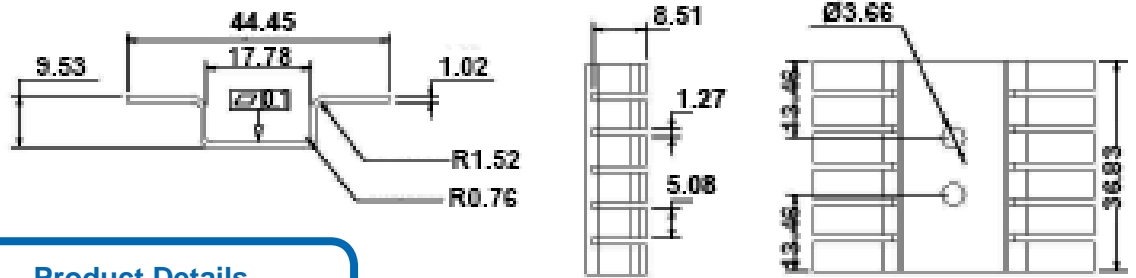
**ATS-PCBT1089**



**Product Details**

Length (mm)	Width (mm)	Height (mm)	Tim	Material	Finish	Packaged Cooled	Thermal Resistance (Natural Convection)	R @ 200 LFM	R @ 400 LFM	R @ 600 LFM	R @ 800 LFM
64.0	64.0	23.3	No TIM	Aluminum	Blk Anodized	TO-3	6.0	2.6	1.8	1.4	1.3

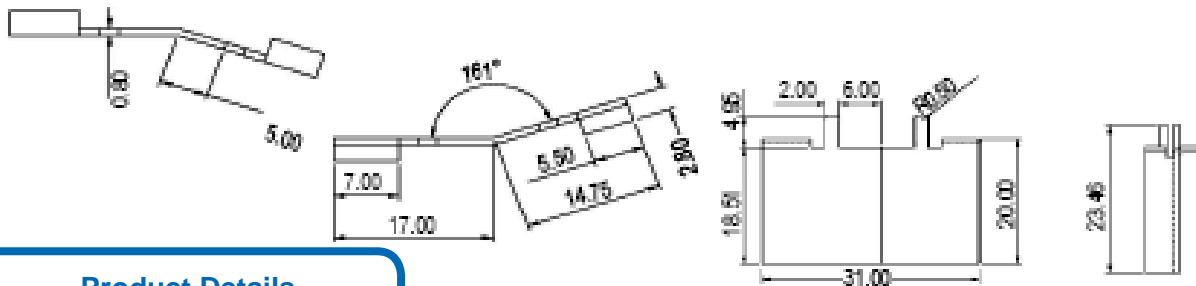
**ATS-PCBT1090**



**Product Details**

Length (mm)	Width (mm)	Height (mm)	Tim	Material	Finish	Packaged Cooled	Thermal Resistance (Natural Convection)	R @ 200 LFM	R @ 400 LFM	R @ 600 LFM	R @ 800 LFM
36.8	44.5	9.5	No TIM	Aluminum	Blk Anodized	TO-220 (DUAL)	9.6	3.0	1.7	1.0	0.9

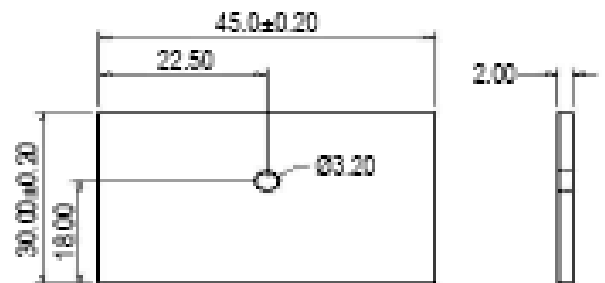
**ATS-PCBT1091**



**Product Details**

Length (mm)	Width (mm)	Height (mm)	Tim	Material	Finish	Packaged Cooled	Thermal Resistance (Natural Convection)	R @ 200 LFM	R @ 400 LFM	R @ 600 LFM	R @ 800 LFM
20.0	31.0	0.8	No TIM	Steel	Tin Plated	TO-220	25.0	13.0	11.2	10.3	9.5

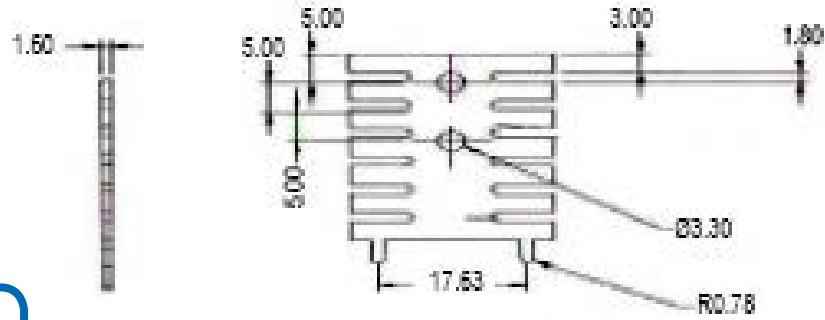
**ATS-PCBT1092**



**Product Details**

Length (mm)	Width (mm)	Height (mm)	Tim	Material	Finish	Packaged Cooled	Thermal Resistance (Natural Convection)	R @ 200 LFM	R @ 400 LFM	R @ 600 LFM	R @ 800 LFM
30.0	45.0	2.0	No TIM	Aluminum	None	TO-220	23.0	11.0	9.2	8.3	7.5

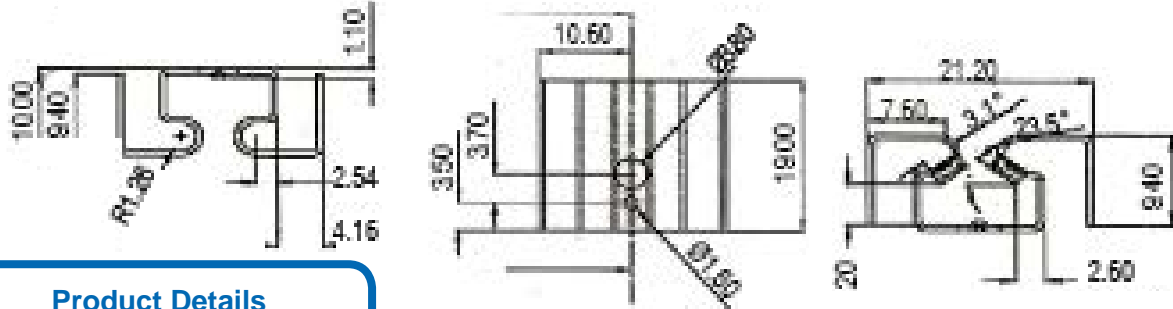
## ATS-PCBT1093



### Product Details

Length (mm)	Width (mm)	Height (mm)	Tim	Material	Finish	Packaged Cooled	Thermal Resistance (Natural Convection)	R @ 200 LFM	R @ 400 LFM	R @ 600 LFM	R @ 800 LFM
31.8	23.2	1.1	No TIM	Copper	Tin Plated	TO-220	23.0	14.0	10.7	8.6	7.7

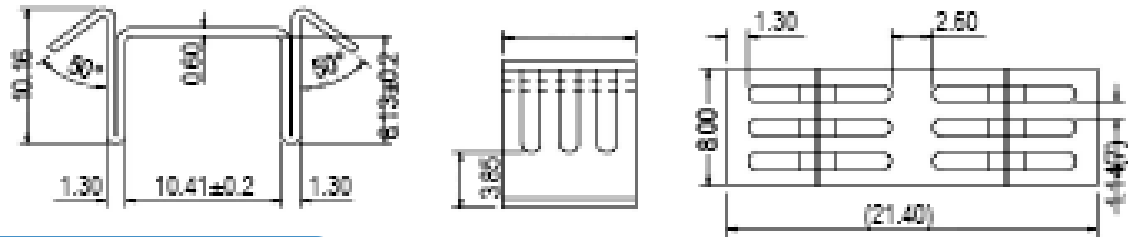
## ATS-PCBT1094



### Product Details

Length (mm)	Width (mm)	Height (mm)	Tim	Material	Finish	Packaged Cooled	Thermal Resistance (Natural Convection)	R @ 200 LFM	R @ 400 LFM	R @ 600 LFM	R @ 800 LFM
19.0	21.2	10.0	No TIM	Aluminum	Blk Anodized	TO-220	21.2	11.2	8.4	6.0	5.0

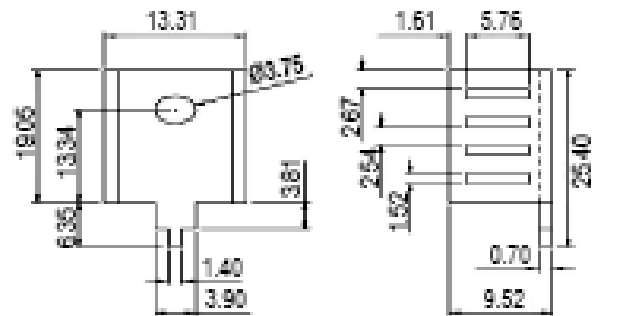
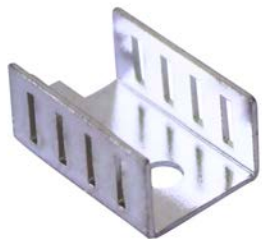
## ATS-PCBT1095



### Product Details

Length (mm)	Width (mm)	Height (mm)	Tim	Material	Finish	Packaged Cooled	Thermal Resistance (Natural Convection)	R @ 200 LFM	R @ 400 LFM	R @ 600 LFM	R @ 800 LFM
8.0	21.4	10.2	No TIM	Copper	Tin Plated	TO-252	28.0	21.0	16.0	12.5	11.0

## ATS-PCBT1096

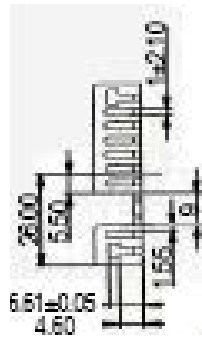
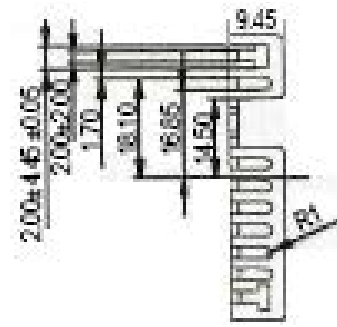
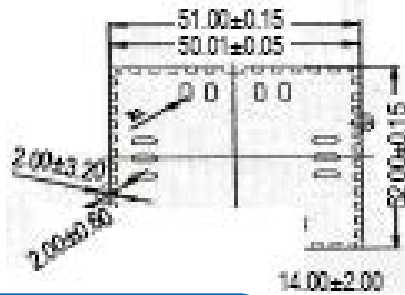


### Product Details

Length (mm)	Width (mm)	Height (mm)	Tim	Material	Finish	Packaged Cooled	Thermal Resistance (Natural Convection)	R @ 200 LFM	R @ 400 LFM	R @ 600 LFM	R @ 800 LFM
19.1	13.3	9.5	No TIM	Steel	Tin Plated	TO-220	35.7	14.0	8.7	6.6	5.6



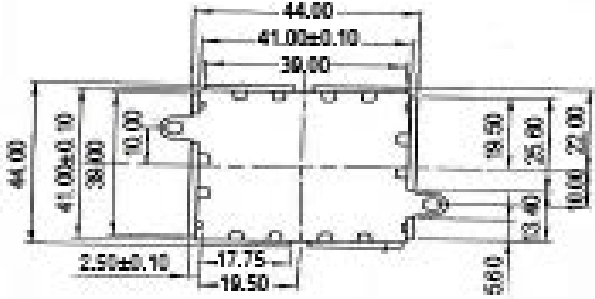
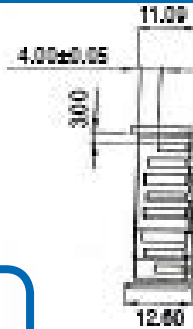
## ATS-PCBT1097



### Product Details

Length (mm)	Width (mm)	Height (mm)	Tim	Material	Finish	Packaged Cooled	Thermal Resistance (Natural Convection)	R @ 200 LFM	R @ 400 LFM	R @ 600 LFM	R @ 800 LFM
58.0	52.0	1.5	No TIM	Aluminum	Blk Anodized	TO-220	21.0	12.2	9.5	8.0	7.3

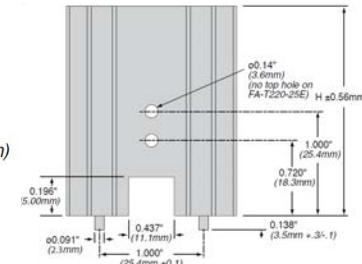
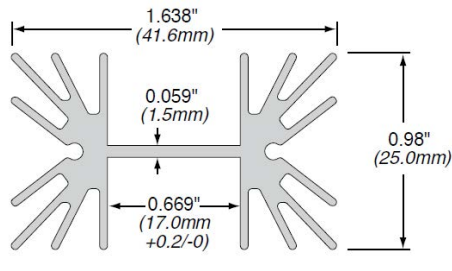
## ATS-PCBT1098



### Product Details

Length (mm)	Width (mm)	Height (mm)	Tim	Material	Finish	Packaged Cooled	Thermal Resistance (Natural Convection)	R @ 200 LFM	R @ 400 LFM	R @ 600 LFM	R @ 800 LFM
44.0	44.0	1.5	No TIM	Aluminum	Blk Anodized	TO-220	22.0	13.0	10.2	8.5	7.6

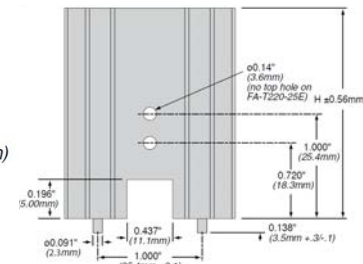
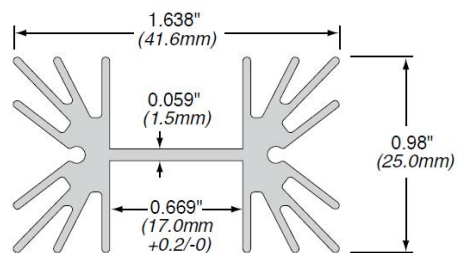
## ATS-PCBM1099



### Product Details

Length (mm)	Width (mm)	Height (mm)	Tim	Material	Finish	Packaged Cooled	Thermal Resistance (Natural Convection)	R @ 200 LFM	R @ 400 LFM	R @ 600 LFM	R @ 800 LFM
25.4	46.1	25	No TIM	Aluminum	Blk Anodized	TO-218,TO-220,TO-247	4.8	4.2	3	2.3	1.8

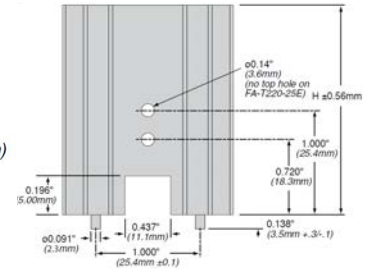
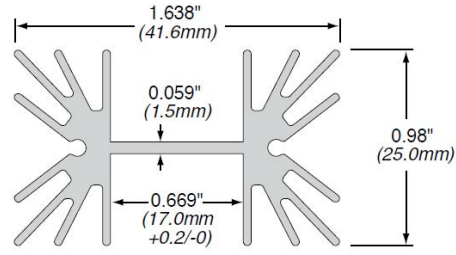
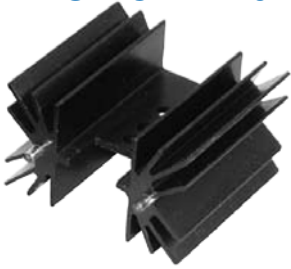
## ATS-PCBM1100



### Product Details

Length (mm)	Width (mm)	Height (mm)	Tim	Material	Finish	Packaged Cooled	Thermal Resistance (Natural Convection)	R @ 200 LFM	R @ 400 LFM	R @ 600 LFM	R @ 800 LFM
38.1	41.6	25	No TIM	Aluminum	Blk Anodized	TO-218,TO-220,TO-247	3.9	3.1	2.1	1.5	1.3

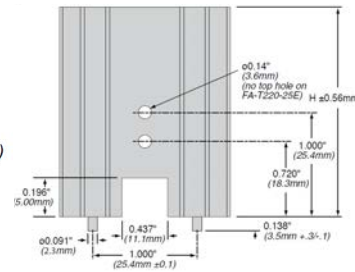
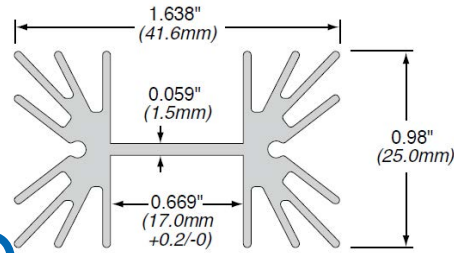
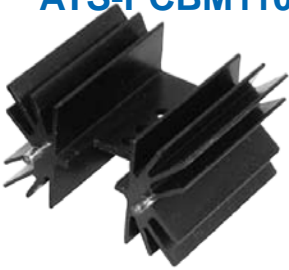
## ATS-PCBM1101



### Product Details

Length (mm)	Width (mm)	Height (mm)	Tim	Material	Finish	Packaged Cooled	Thermal Resistance (Natural Convection)	R @ 200 LFM	R @ 400 LFM	R @ 600 LFM	R @ 800 LFM
50.8	41.6	25	No Tim	Aluminum	Blk Anodized	TO-218,TO-220,TO-247	3.5	2.5	1.6	1.2	1

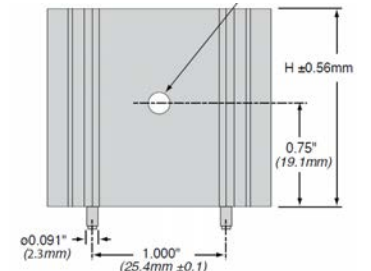
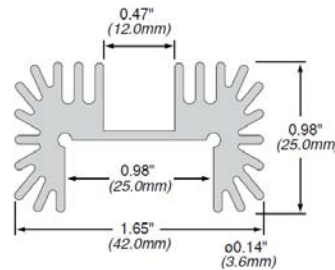
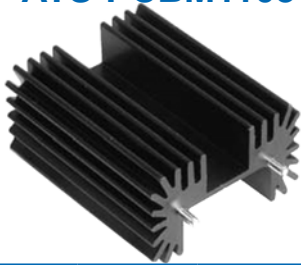
## ATS-PCBM1102



### Product Details

Length (mm)	Width (mm)	Height (mm)	Tim	Material	Finish	Packaged Cooled	Thermal Resistance (Natural Convection)	R @ 200 LFM	R @ 400 LFM	R @ 600 LFM	R @ 800 LFM
63.5	41.6	25	No Tim	Aluminum	Blk Anodized	TO-218,TO-220,TO-247	3.1	2.5	1.6	1.2	1

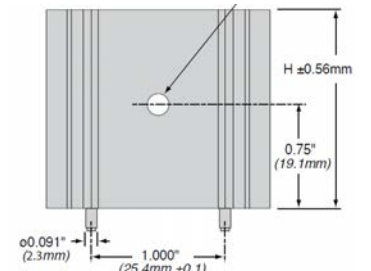
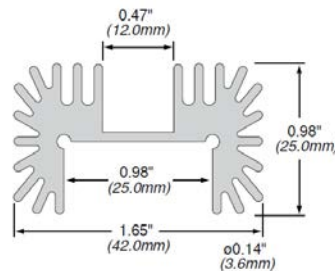
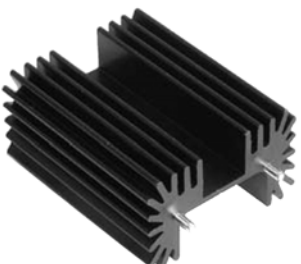
## ATS-PCBM1103



### Product Details

Length (mm)	Width (mm)	Height (mm)	Tim	Material	Finish	Packaged Cooled	Thermal Resistance (Natural Convection)	R @ 200 LFM	R @ 400 LFM	R @ 600 LFM	R @ 800 LFM
25.4	42	25	No Tim	Aluminum	Blk Anodized	TO-218,TO-220,TO-247	4.7	1.5	1.1	0.8	0.6

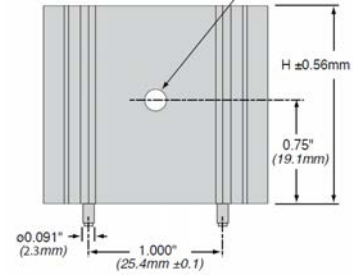
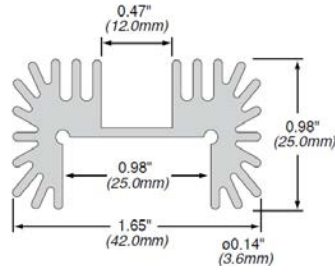
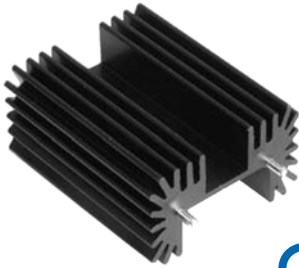
## ATS-PCBM1104



### Product Details

Length (mm)	Width (mm)	Height (mm)	Tim	Material	Finish	Packaged Cooled	Thermal Resistance (Natural Convection)	R @ 200 LFM	R @ 400 LFM	R @ 600 LFM	R @ 800 LFM
38.1	42	25	No Tim	Aluminum	Blk Anodized	TO-218,TO-220,TO-247	3.8	1.4	1	0.8	0.6

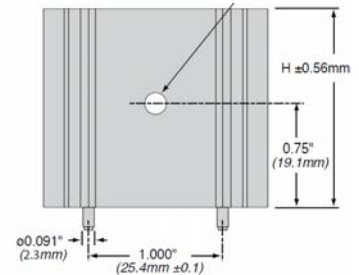
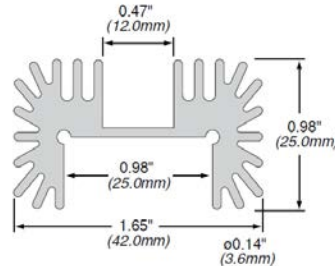
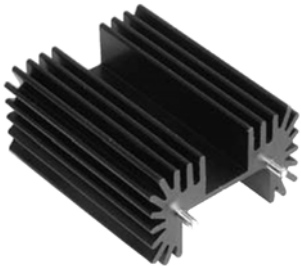
**ATS-PCBM1105**



**Product Details**

Length (mm)	Width (mm)	Height (mm)	Tim	Material	Finish	Packaged Cooled	Thermal Resistance (Natural Convection)	R @ 200 LFM	R @ 400 LFM	R @ 600 LFM	R @ 800 LFM
50.8	42	25	No Tim	Aluminum	Blk Anodized	TO-218,TO-220,TO-247	3.4	1.3	0.9	0.7	0.6

**ATS-PCBM1106**



**Product Details**

Length (mm)	Width (mm)	Height (mm)	Tim	Material	Finish	Packaged Cooled	Thermal Resistance (Natural Convection)	R @ 200 LFM	R @ 400 LFM	R @ 600 LFM	R @ 800 LFM
63.5	42	25	No Tim	Aluminum	Blk Anodized	TO-218,TO-220,TO-247	3	1	0.7	0.6	0.5

For further technical information, or to place an order, please contact  
**ATS at 781-760-2800, [ats-hq@qats.com](mailto:ats-hq@qats.com), or [www.qats.com](http://www.qats.com)**

# Mouser Electronics

Authorized Distributor

Click to View Pricing, Inventory, Delivery & Lifecycle Information:

## Advanced Thermal Solutions:

[ATS-PCB1049](#) [ATS-PCBT1085](#) [ATS-PCBT1087](#) [ATS-PCBT1090](#) [ATS-PCB1001](#) [ATS-PCB1002](#) [ATS-PCB1003](#)  
[ATS-PCB1004](#) [ATS-PCB1006](#) [ATS-PCB1009](#) [ATS-PCBT1096](#) [ATS-PCBT1097](#) [ATS-PCBT1089](#) [ATS-PCBT1091](#)  
[ATS-PCBT1092](#) [ATS-PCBT1093](#) [ATS-PCBT1094](#) [ATS-PCBT1095](#) [ATS-PCBT1079](#) [ATS-PCBT1081](#) [ATS-](#)  
[PCBT1082](#) [ATS-PCBT1083](#) [ATS-PCBT1084](#) [ATS-PCBT1088](#) [ATS-PCB1072](#) [ATS-PCB1073](#) [ATS-PCB1074](#) [ATS-](#)  
[PCBT1075](#) [ATS-PCBT1076](#) [ATS-PCBT1078](#) [ATS-PCB1065](#) [ATS-PCB1066](#) [ATS-PCB1068](#) [ATS-PCB1069](#) [ATS-](#)  
[PCB1070](#) [ATS-PCB1071](#) [ATS-PCB1057](#) [ATS-PCB1058](#) [ATS-PCB1059](#) [ATS-PCB1060](#) [ATS-PCB1061](#) [ATS-](#)  
[PCB1064](#) [ATS-PCB1048](#) [ATS-PCB1050](#) [ATS-PCB1052](#) [ATS-PCB1054](#) [ATS-PCB1055](#) [ATS-PCB1056](#) [ATS-](#)  
[PCB1036](#) [ATS-PCB1037](#) [ATS-PCB1043](#) [ATS-PCB1044](#) [ATS-PCB1046](#) [ATS-PCB1047](#) [ATS-PCB1024](#) [ATS-](#)  
[PCB1025](#) [ATS-PCB1029](#) [ATS-PCB1032](#) [ATS-PCB1033](#) [ATS-PCB1034](#) [ATS-PCB1013](#) [ATS-PCB1014](#) [ATS-](#)  
[PCB1017](#) [ATS-PCB1018](#) [ATS-PCB1019](#) [ATS-PCB1021](#) [ATS-PCBT1098](#) [ATS-PCBT1086](#) [ATS-PCB1035](#) [ATS-](#)  
[PCBT1077](#)