



178
MICROSWITCHES

182
TACTILE SWITCHES

186
22MM CONTROL SWITCHES

191
FOOT SWITCHES

193
LIMIT SWITCHES

203
PIEZO SWITCHES AND KEYPADS

SWITCH

22mm diameter control switches

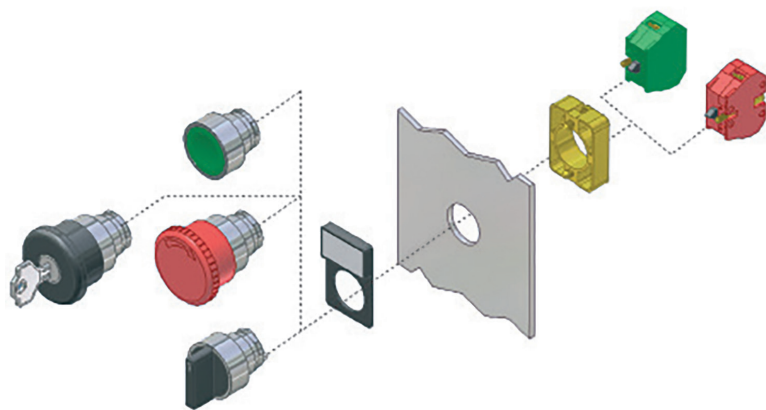
Product overview

- Metal and plastic bodied control push-buttons, E-stops and selector switches
- Rated 660V, 10A max AC
- Operating frequency 3,600 per hour
- Panels mount 1-6mm thick
- Positive opening operation
- Conform to IEC 947-5-1 and EN 60947-5-1
- Terminal marking to EN 50013
- Other button options available to order
- approved

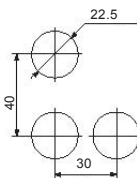


SPECIFICATION

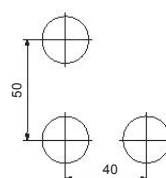
Rated voltage	660V	
Rated AC current	24V 240V 400V	10A 6A 4A
Rated DC current	24V 125V 250V	2.8A 0.55A 0.27A
Short circuit protection	gG fuse	10A
Impulse withstand	6kV	
Internal resistance	<25mΩ	
Wire acceptance	0.75-2.5mm ²	
Rated temperature	Operating Storage	-25°C to +75°C -40°C to +80°C
Material	Metal Plastic	Chromium plated Fibreglass reinforced thermo-plastic
Electrical protection	Metal Plastic	Class I Class II
Ingress protection	IP65	
Mechanical durability	1x10 ⁶ Operations	



230V and same polarity panel spacing



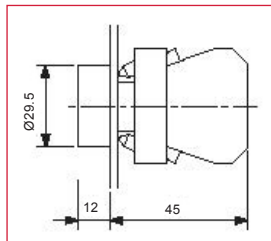
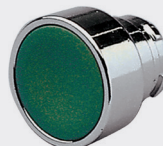
400V and different polarity panel spacing



Flush push buttons

METAL BODIED	PLASTIC BODIED	COLOUR
CCTTR30BK	CCTPR30BK	Black
CCTTR30RD	CCTPR30RD	Red
CCTTR30GW	CCTPR30GW	Green
CCTTR30YW	CCTPR30YW	Yellow
CCTTR30BL	CCTPR30BL	Blue
CCTTR30WH	CCTPR30WH	White

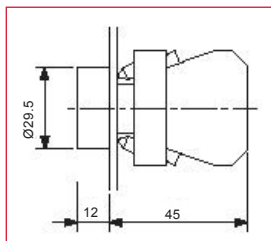
CCTTR30GW



On/off push buttons

METAL BODIED	PLASTIC BODIED	COLOUR
CCTTR00RD	CCTPR00RD	Red - 0
CCTTR01GN	CCTPR01GN	Green - 1

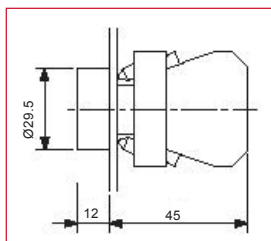
CCTTR00RD / CCTTR01GN



Arrow push buttons

METAL BODIED	PLASTIC BODIED	STYLE
CCTTRAHBK	N/A	Horizontal
CCTTRAVBK	N/A	Vertical

CCTTRAHBK / CCTTRAVBK





178
MICROSWITCHES

182
TACTILE SWITCHES

186
22MM CONTROL SWITCHES

191
FOOT SWITCHES

193
LIMIT SWITCHES

203
PIEZO SWITCHES AND KEYPADS

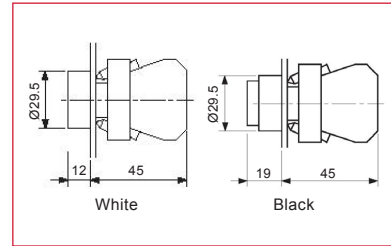
SWITCH

189

Start/stop push buttons

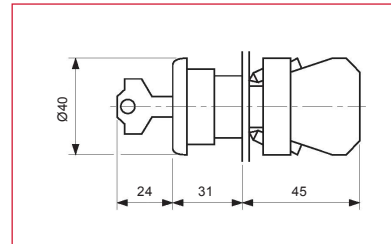
METAL BODIED	PLASTIC BODIED	STYLE	COLOUR
CCTTRSTWH	N/A	Start	White
CCTTRSPBK	N/A	Stop	Black
CCTTRONWH	N/A	On	White
CCTTROFBK	N/A	Off	Black

Black button - extended height



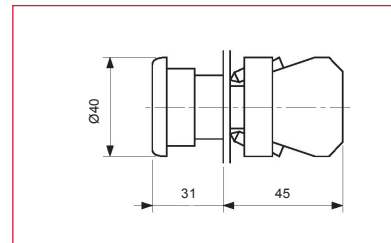
40mm E-stop key release push buttons

METAL BODIED	PLASTIC BODIED	COLOUR
CCTTM41LB	CCTPM41LB	Black
CCTTM41LR	CCTPM41LR	Red



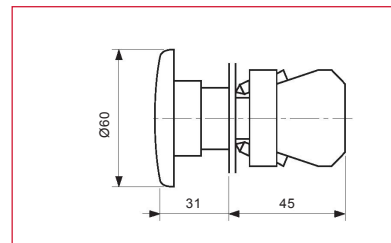
40mm E-stop twist release push buttons

METAL BODIED	PLASTIC BODIED	COLOUR
CCTTM40LB	CCTPM40LB	Black
CCTTM40LR	CCTPM40LR	Red



60mm E-stop twist push buttons

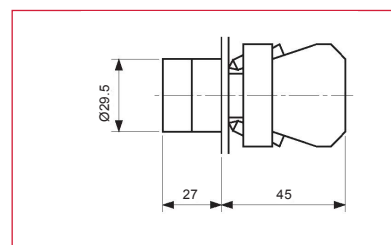
METAL BODIED	PLASTIC BODIED	COLOUR
CCTTM60LB	CCTPM60LB	Black
CCTTM60LR	CCTPM60LR	Red



Selector switch

- Black short lever, 2 and 3 position selector switch
- Maintained and spring return options

METAL BODIED	PLASTIC BODIED	POSITIONS	STYLE
CCTTSS211	CCTPSS211	2	Maintained left and right
CCTTSS210	CCTPSS210	2	Return left
CCTTSS311	CCTPSS311	3	Maintained left, centre and right
CCTTSS300	CCTPSS300	3	Return to centre from left and right
CCTTSS301	CCTPSS301	3	Return to centre from left, maintained right
CCTTSS310	CCTPSS310	3	Return to centre from right, maintained left





178
MICROSWITCHES

182
TACTILE SWITCHES

186
22MM CONTROL SWITCHES

191
FOOT SWITCHES

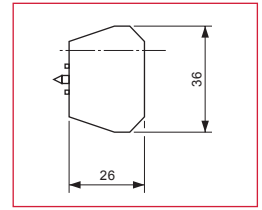
193
LIMIT SWITCHES

203
PIEZO SWITCHES AND KEYPADS

Contact block

- NO and NC contact blocks
- Screw fixed to mounting plate
- Can be stacked side by side/piggybacked

CCTTC1R / CCTTC0G

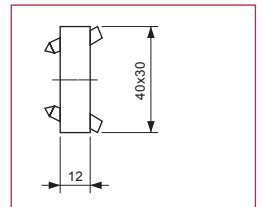


PART NO.	TYPE
CCTTC1R	Red NC
CCTTC0G	Green NO

Mounting plate

- Mounting plate for contact blocks
- Holds 1 or 2 NO or NC contact blocks
- Metal plate must be used with metal switches
- Plastic to be used with plastic bodied switches

CCTTP / CCTTPP

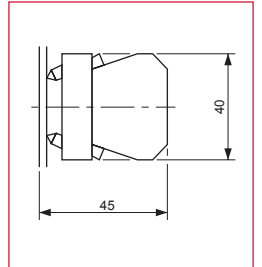


PART NO.	TYPE
CCTTP	Metal mounting plate
CCTTPP	Plastic mounting plate

Contact block with mounting plate

- Contact blocks and mountings plates as above supplied as one assembly
- Plastic plate must be used with plastic switches
- Metal to be used with metal

CCTTC1R / CCTTC0G / CCTTPP



PART NO.	TYPE
CCIOB	Green NO contact + metal base
CC01B	Red NC contact + metal base
CCIOB/P	Green NO contact + plastic base
CC01B/P	Red NC contact + plastic base

Dust cap

- Clear silicone dust cap for push button switches
- Other colours to order

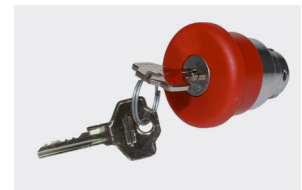
CCTTRDCL



PART NO.	TYPE
CCTTRDCL	Clear dust cap

Keys for E-stop key release

CCTTKRD / CCTTKBK



PART NO.	TYPE
CCTTKRD	Red
CCTTKBK	Black

Button surrounds

- Yellow engraved text emergency stop
- Black name plate with recessed label area

CCTTBES



PART NO.	TYPE
CCTTBES	60mm diameter e-stop
CCTTBNP	Name plate blank

SWITCH