

High Efficiency Thyristor

$$V_{RRM} = 1200 \text{ V}$$

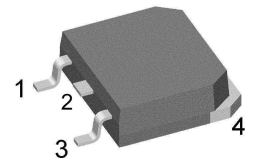
$$I_{TAV} = 50 \text{ A}$$

$$V_T = 1.27 \text{ V}$$

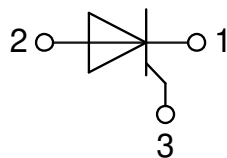
Single Thyristor

Part number

CLA50E1200TC



Backside: anode



Features / Advantages:

- Thyristor for line frequency
- Planar passivated chip
- Long-term stability

Applications:

- Line rectifying 50/60 Hz
- Softstart AC motor control
- DC Motor control
- Power converter
- AC power control
- Lighting and temperature control

Package: TO-268AA (D3Pak)

- Industry standard outline
- RoHS compliant
- Epoxy meets UL 94V-0

Terms and Conditions of Usage

The data contained in this product data sheet is exclusively intended for technically trained staff. The user will have to evaluate the suitability of the product for the intended application and the completeness of the product data with respect to his application. The specifications of our components may not be considered as an assurance of component characteristics. The information in the valid application- and assembly notes must be considered. Should you require product information in excess of the data given in this product data sheet or which concerns the specific application of your product, please contact your local sales office.

Due to technical requirements our product may contain dangerous substances. For information on the types in question please contact your local sales office.

Should you intend to use the product in aviation, in health or life endangering or life support applications, please notify. For any such application we urgently recommend

- to perform joint risk and quality assessments;

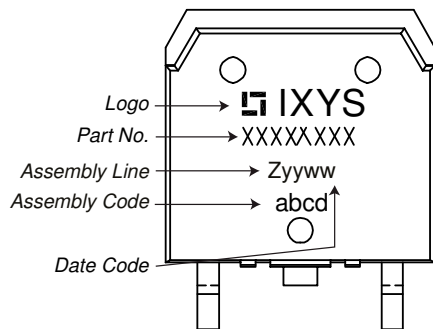
- the conclusion of quality agreements;

- to establish joint measures of an ongoing product survey, and that we may make delivery dependent on the realization of any such measures.

| Thyristor | | | Ratings | | | |
|----------------|--|---|-------------------------|------|------|-------------------|
| Symbol | Definition | Conditions | min. | typ. | max. | Unit |
| $V_{RSM/DSM}$ | max. non-repetitive reverse/forward blocking voltage | $T_{VJ} = 25^{\circ}C$ | | | 1300 | V |
| $V_{RRM/DRM}$ | max. repetitive reverse/forward blocking voltage | $T_{VJ} = 25^{\circ}C$ | | | 1200 | V |
| I_{RD} | reverse current, drain current | $V_{R/D} = 1200 V$ | $T_{VJ} = 25^{\circ}C$ | | 50 | μA |
| | | $V_{R/D} = 1200 V$ | $T_{VJ} = 125^{\circ}C$ | | 4 | mA |
| V_T | forward voltage drop | $I_T = 50 A$ | $T_{VJ} = 25^{\circ}C$ | | 1.32 | V |
| | | $I_T = 100 A$ | | | 1.60 | V |
| | | $I_T = 50 A$ | $T_{VJ} = 125^{\circ}C$ | | 1.27 | V |
| | | $I_T = 100 A$ | | | 1.65 | V |
| I_{TAV} | average forward current | $T_C = 125^{\circ}C$ | $T_{VJ} = 150^{\circ}C$ | | 50 | A |
| $I_{T(RMS)}$ | RMS forward current | 180° sine | | | 79 | A |
| V_{T0} | threshold voltage | } for power loss calculation only | $T_{VJ} = 150^{\circ}C$ | | 0.88 | V |
| r_T | slope resistance | | | | 7.7 | m Ω |
| R_{thJC} | thermal resistance junction to case | | | | 0.25 | K/W |
| R_{thCH} | thermal resistance case to heatsink | | | 0.15 | | K/W |
| P_{tot} | total power dissipation | | $T_C = 25^{\circ}C$ | | 500 | W |
| I_{TSM} | max. forward surge current | $t = 10 ms; (50 Hz), sine$ | $T_{VJ} = 45^{\circ}C$ | | 650 | A |
| | | $t = 8,3 ms; (60 Hz), sine$ | $V_R = 0 V$ | | 700 | A |
| | | $t = 10 ms; (50 Hz), sine$ | $T_{VJ} = 150^{\circ}C$ | | 555 | A |
| | | $t = 8,3 ms; (60 Hz), sine$ | $V_R = 0 V$ | | 595 | A |
| I^2t | value for fusing | $t = 10 ms; (50 Hz), sine$ | $T_{VJ} = 45^{\circ}C$ | | 2.12 | kA ² s |
| | | $t = 8,3 ms; (60 Hz), sine$ | $V_R = 0 V$ | | 2.04 | kA ² s |
| | | $t = 10 ms; (50 Hz), sine$ | $T_{VJ} = 150^{\circ}C$ | | 1.54 | kA ² s |
| | | $t = 8,3 ms; (60 Hz), sine$ | $V_R = 0 V$ | | 1.48 | kA ² s |
| C_J | junction capacitance | $V_R = 400 V f = 1 MHz$ | $T_{VJ} = 25^{\circ}C$ | | 25 | pF |
| P_{GM} | max. gate power dissipation | $t_p = 30 \mu s$ | $T_C = 150^{\circ}C$ | | 10 | W |
| | | $t_p = 300 \mu s$ | | | 5 | W |
| P_{GAV} | average gate power dissipation | | | | 0.5 | W |
| $(di/dt)_{cr}$ | critical rate of rise of current | $T_{VJ} = 150^{\circ}C; f = 50 Hz$ repetitive, $I_T = 150 A$ | | | 150 | A/ μs |
| | | $t_p = 200 \mu s; di_G/dt = 0.3 A/\mu s;$ $I_G = 0.3 A; V = \frac{2}{3} V_{DRM}$ non-repet., $I_T = 50 A$ | | | 500 | A/ μs |
| $(dv/dt)_{cr}$ | critical rate of rise of voltage | $V = \frac{2}{3} V_{DRM}$ | $T_{VJ} = 150^{\circ}C$ | | 1000 | V/ μs |
| | | $R_{GK} = \infty$; method 1 (linear voltage rise) | | | | |
| V_{GT} | gate trigger voltage | $V_D = 6 V$ | $T_{VJ} = 25^{\circ}C$ | | 1.5 | V |
| | | | $T_{VJ} = -40^{\circ}C$ | | 1.6 | V |
| I_{GT} | gate trigger current | $V_D = 6 V$ | $T_{VJ} = 25^{\circ}C$ | | 50 | mA |
| | | | $T_{VJ} = -40^{\circ}C$ | | 80 | mA |
| V_{GD} | gate non-trigger voltage | $V_D = \frac{2}{3} V_{DRM}$ | $T_{VJ} = 150^{\circ}C$ | | 0.2 | V |
| I_{GD} | gate non-trigger current | | | | 3 | mA |
| I_L | latching current | $t_p = 10 \mu s$ | $T_{VJ} = 25^{\circ}C$ | | 125 | mA |
| | | $I_G = 0.3 A; di_G/dt = 0.3 A/\mu s$ | | | | |
| I_H | holding current | $V_D = 6 V R_{GK} = \infty$ | $T_{VJ} = 25^{\circ}C$ | | 100 | mA |
| t_{gd} | gate controlled delay time | $V_D = \frac{1}{2} V_{DRM}$ | $T_{VJ} = 25^{\circ}C$ | | 2 | μs |
| | | $I_G = 0.3 A; di_G/dt = 0.3 A/\mu s$ | | | | |
| t_q | turn-off time | $V_R = 100 V; I_T = 50 A; V = \frac{2}{3} V_{DRM}$ $di/dt = 10 A/\mu s dv/dt = 20 V/\mu s t_p = 200 \mu s$ | $T_{VJ} = 125^{\circ}C$ | | 200 | μs |

| Package TO-268AA (D3Pak) | | | Ratings | | | |
|--------------------------|------------------------------|--------------|---------|------|------|------|
| Symbol | Definition | Conditions | min. | typ. | max. | Unit |
| I_{RMS} | RMS current | per terminal | | | 70 | A |
| T_{VJ} | virtual junction temperature | | -40 | | 150 | °C |
| T_{op} | operation temperature | | -40 | | 125 | °C |
| T_{stg} | storage temperature | | -40 | | 150 | °C |
| Weight | | | | 5 | | g |
| F_C | mounting force with clip | | 20 | | 120 | N |

Product Marking



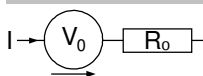
Part description

- C = Thyristor (SCR)
- L = High Efficiency Thyristor
- A = (up to 1200V)
- 50 = Current Rating [A]
- E = Single Thyristor
- 1200 = Reverse Voltage [V]
- TC = TO-268AA (D3Pak) (2)

| Ordering | Ordering Number | Marking on Product | Delivery Mode | Quantity | Code No. |
|----------|-----------------|--------------------|---------------|----------|----------|
| Standard | CLA50E1200TC | CLA50E1200TC | Tube | 30 | 502708 |

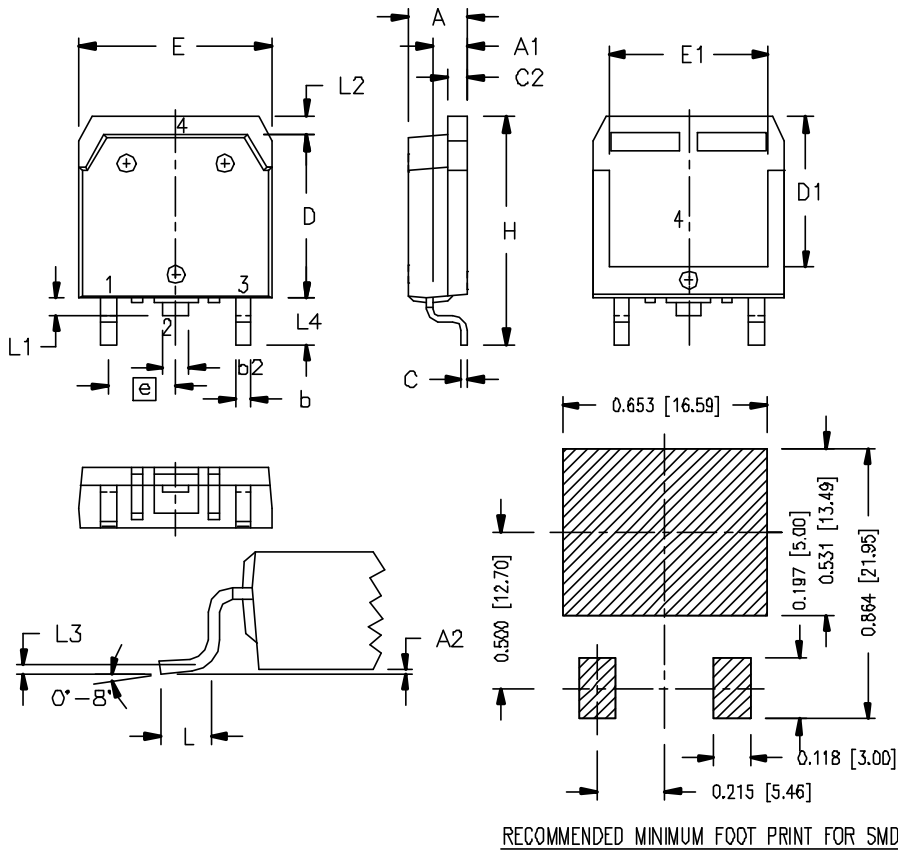
| Similar Part | Package | Voltage class |
|--------------|--------------|---------------|
| CLA50E1200HB | TO-247AD (3) | 1200 |

Equivalent Circuits for Simulation

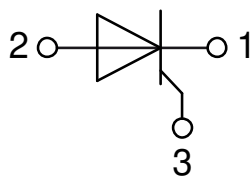
** on die level*
 $T_{VJ} = 150\text{ °C}$

Thyristor

| | | | |
|--------------|--------------------|------|----|
| $V_{0\ max}$ | threshold voltage | 0.88 | V |
| $R_{0\ max}$ | slope resistance * | 5.2 | mΩ |

Outlines TO-268AA (D3Pak)



| Dim. | Millimeter | | Inches | |
|------|------------|-------|-----------|-------|
| | min | max | min | max |
| A | 4.90 | 5.10 | 0.193 | 0.201 |
| A1 | 2.70 | 2.90 | 0.106 | 0.114 |
| A2 | 0.02 | 0.25 | 0.001 | 0.100 |
| b | 1.15 | 1.45 | 0.045 | 0.057 |
| b2 | 1.90 | 2.10 | 0.075 | 0.083 |
| C | 0.40 | 0.65 | 0.016 | 0.026 |
| C2 | 1.45 | 1.60 | 0.057 | 0.063 |
| D | 13.80 | 14.00 | 0.543 | 0.551 |
| D1 | 12.40 | 12.70 | 0.488 | 0.500 |
| E | 15.85 | 16.05 | 0.624 | 0.632 |
| E1 | 13.30 | 13.60 | 0.524 | 0.535 |
| e | 5.45 BSC | | 0.215 BSC | |
| H | 18.70 | 19.10 | 0.736 | 0.752 |
| L | 2.40 | 2.70 | 0.094 | 0.106 |
| L1 | 1.20 | 1.40 | 0.047 | 0.055 |
| L2 | 1.00 | 1.15 | 0.039 | 0.045 |
| L3 | 0.25 BSC | | 0.100 BSC | |
| L4 | 3.80 | 4.10 | 0.150 | 0.161 |



Thyristor

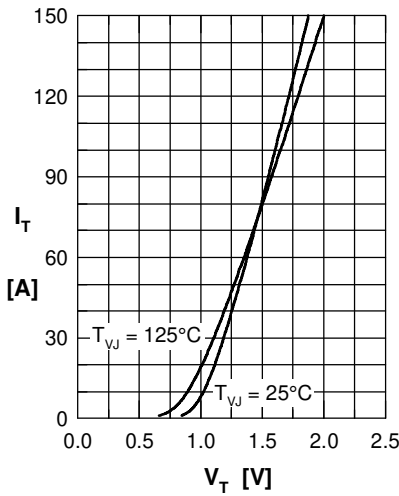


Fig. 1 Forward characteristics

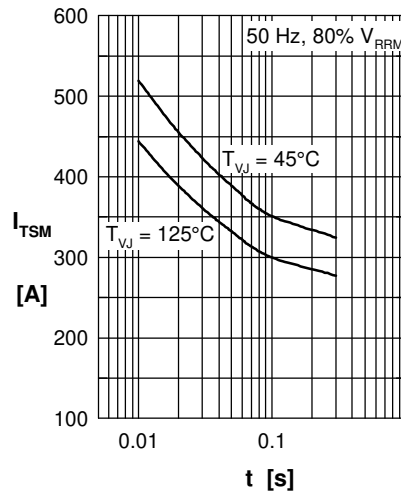


Fig. 2 Surge overload current
 I_{TSM} : crest value, t : duration

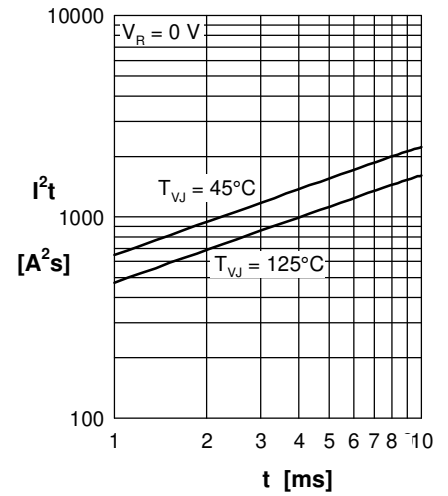


Fig. 3 I^2t versus time (1-10 s)

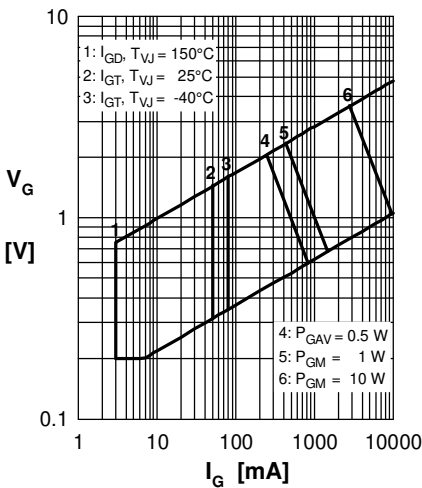


Fig. 4 Gate voltage & gate current

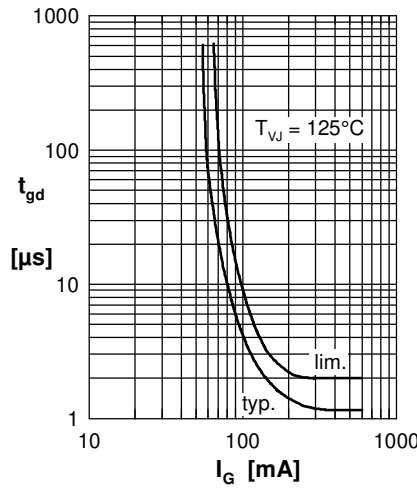


Fig. 5 Gate controlled delay time t_{gd}

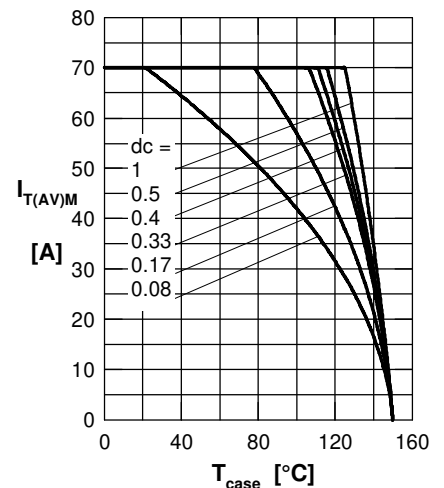


Fig. 6 Max. forward current at case temperature

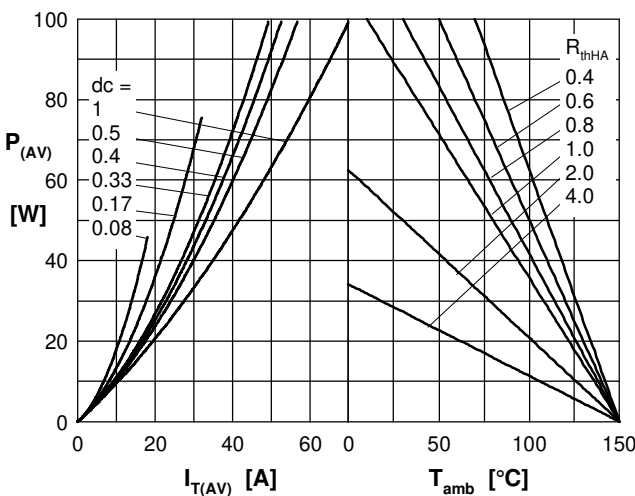


Fig. 7a Power dissipation versus direct output current
 Fig. 7b and ambient temperature

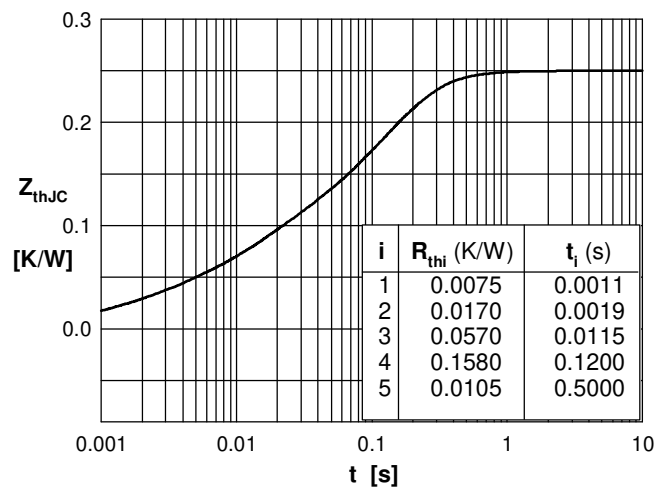


Fig. 7 Transient thermal impedance junction to case