

## Specification Sheet

Part Number: MB3A10M4

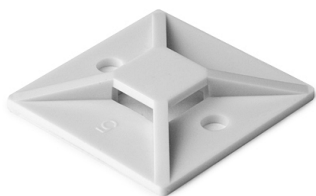
For use with HellermannTyton T18 - T30 cable ties to provide stability when securing bundles.

4-way opening allows cable ties to be installed parallel or perpendicular to bundles.

The rubber-based adhesive is an economical choice ideal for indoor applications, with a static load weight of 0.6 lb.

Two predrilled holes extend mounting options and solutions.

Extended adhesive liner is easy to remove quickly.



Rubber Adhesive Cable Tie Mount, 0.75" x 0.75", Use With T18-T30 Cable Tie, PA66, White, 1000/pkg

**Article Number** 151-28721

**Type** MB3A

**Color** White (WH)

**Quantity Per** bag

**Product Description** MB3A adhesive mounts are for use with HellermannTyton T18 - T30 Series cable ties to provide stability when securing bundles. The rubber adhesive-backed mounts can be used to secure a bundle and have two predrilled holes to extend mounting options.

<b>Short Description</b>	Rubber Adhesive Cable Tie Mount, 0.75" x 0.75", Use With T18-T30 Cable Tie, PA66, White, 1000/pkg
<b>Global Part Name</b>	MB3A-PA66-WH
<b>Length L (Imperial)</b>	0.75
<b>Length L (Metric)</b>	19.0
<b>Fixation Method</b>	Screw Mounting and Adhesive
<b>Width W (Imperial)</b>	0.75
<b>Width W (Metric)</b>	19.0
<b>Cable Ties</b>	T18 - T30
<b>Height H (Imperial)</b>	.18
<b>Height H (Metric)</b>	4.6
<b>Cable Tie Width Max (Imperial)</b>	0.14
<b>Cable Tie Width Max (Metric)</b>	3.6
<b>Mounting Hole Diameter D (Imperial)</b>	0.12
<b>Mounting Hole Diameter D (Metric)</b>	3.0 mm
<b>Mounting Hole Diameter D Max (Metric)</b>	3.0

<b>Mounting Hole Centers (Imperial)</b>	0.52
<b>Material</b>	Polyamide 6.6 (PA66)
<b>Material Shortcut</b>	PA66
<b>Adhesive</b>	Synthetic rubber with base of polyethylene foam
<b>Flammability</b>	UL 94 V-2 (excluding adhesive)
<b>Adhesive Operating Temperature</b>	0°F to +150°F (-18 °C to +66 °C)
<b>Operating Temperature</b>	-40°F to +185°F (-40°C to +85°C)
<b>ROHS Compliant</b>	Yes
<b>Package Quantity (Imperial)</b>	1000
<b>Package Quantity (Metric)</b>	1000
<b>Customs Number</b>	3926909988