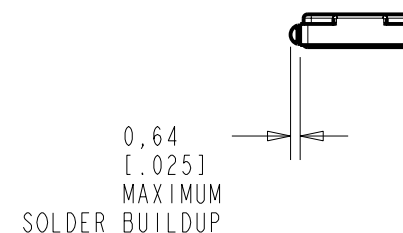
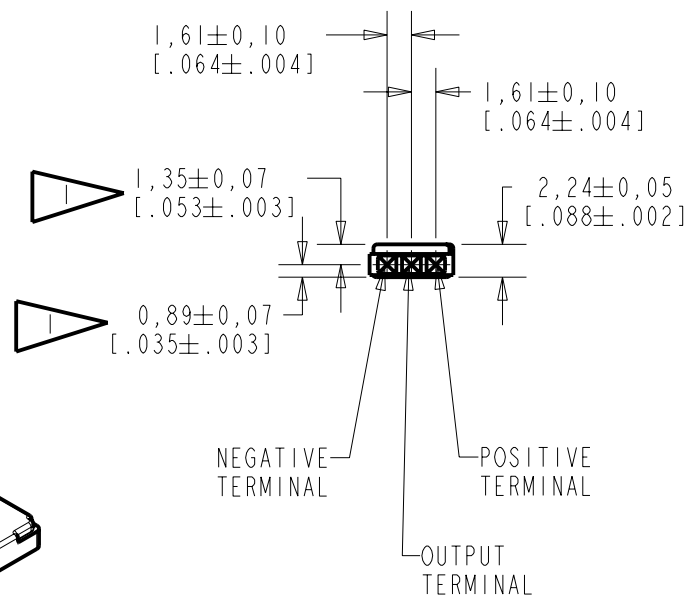
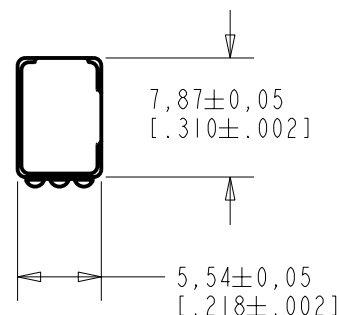


BU-23842-000

SHT 1.1

NOTE:

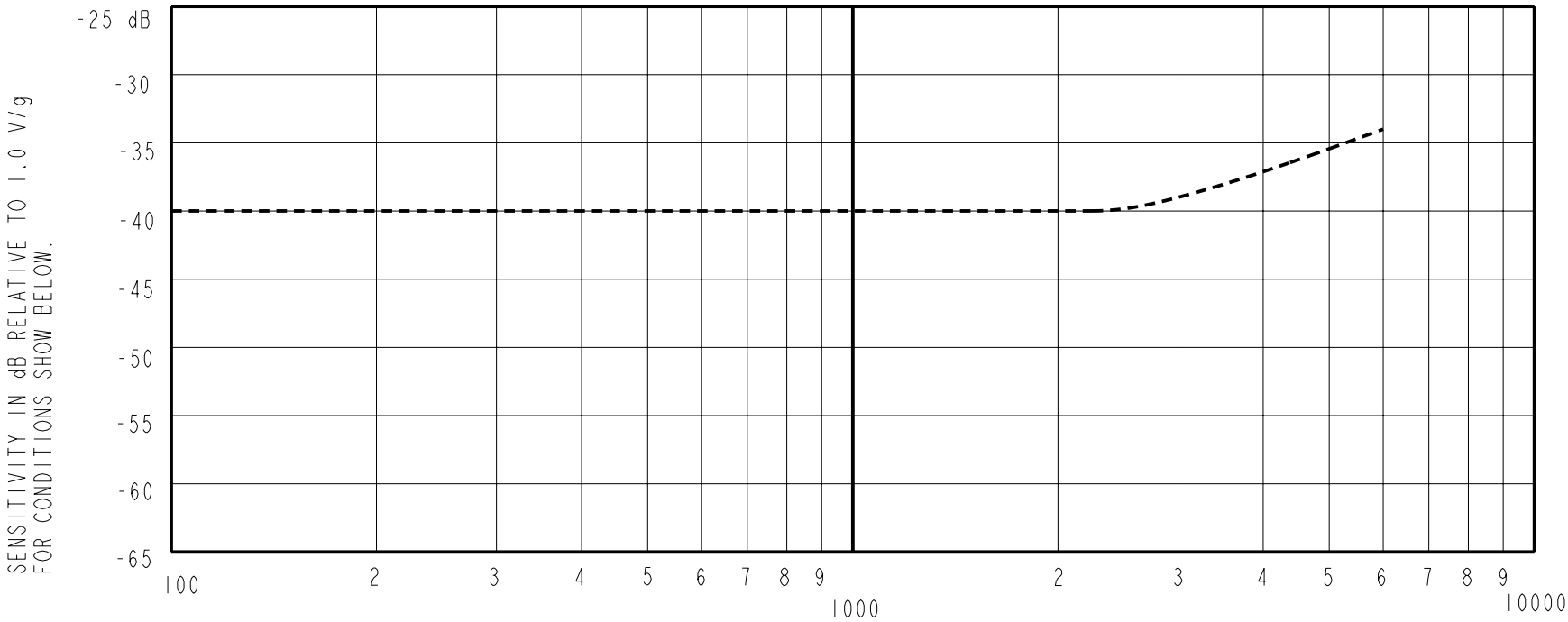
1 LOCATED FROM TWO SURFACES FOR CUSTOMER CONVENIENCE.
ONLY APPLICABLE FROM ONE SURFACE, NOT TO BE USED
TOGETHER. HORIZONTAL LOCATION FOR TERMINAL CENTERED
TO $\pm 0,17$ [.007].



DIMENSIONS IN MILLIMETERS [INCHES]

KNOWLES ELECTRONICS
ITASCA, ILLINOIS U.S.A.

Revision	C.O. #	Implementation Date	RELEASE LEVEL	REVISION
C	MI0101515	7-16-07	Released	C
B	MI0101175	9-20-06		
SCALE: 2:1			DR. BY AB	DATE 9-20-06
DO NOT SCALE DRAWING			CK. BY GJP	DATE 9-25-06
TITLE: VIBRATION TRANSDUCER			APP. BY GJP	DATE 9-25-06
OUTLINE DRAWING			BU-23842-000 SHT 1.1	



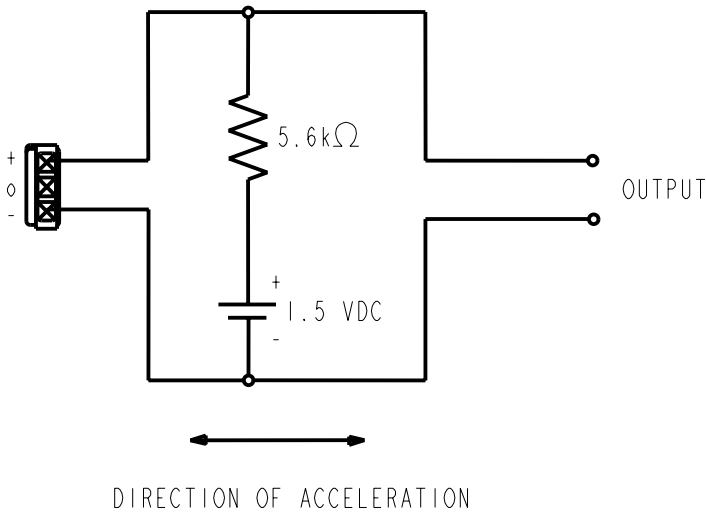
SENSITIVITY			
FREQUENCY	MIN.	NOM.	MAX.
300	---	-40.0	---
1000	-44.0	-40.0	-36.0
3000	---	-38.0	---

DEVICE CONFORMITY	
RANGE OF DEVIATION FROM 1 kHz	
-2.0	0
0	0
0	+6.0

- NOTES:
- ALL DATA MEASURED WITH CIRCUIT CONFIGURATION SHOWN BELOW.
 - CASE CONNECTED TO NEGATIVE TERMIANL.

DC SUPPLY	BATTERY CURRENT DRAIN	"A" WEIGHTED NOISE (RE 1.0V)	OUTPUT IMPEDANCE OHMS (AT 1 kHz)		
			MIN.	NOM.	MAX.
1.5 V	50 μ A MAX.	-103 dB MAX.	4900	5200	5500

3. TEST CONDITIONS:



Revision	C.O. #	Implementation Date	RELEASE LEVEL		REVISION
C	M10101515	7-16-07	Released		C
B	M10101175	9-20-06			
WHEN TEST LIMITS ARE USED TO ESTABLISH INCOMING INSPECTION ACCEPTANCE/REJECTION CRITERIA, CORRELATION OF TEST EQUIPMENT WITH KNOWLES IS ALSO REQUIRED FOR ELIMINATION OF EQUIPMENT AND TEST METHOD VARIATION			DR. BY	DATE	
			AB	9-20-06	
TITLE: VIBRATION TRANSDUCER PERFORMANCE SPECIFICATION			CK. BY	DATE	
			GJP	9-25-06	
BU-23842-000 SHT 2.1			APP. BY	DATE	
			GJP	9-25-06	

KNOWLES ELECTRONICS
ITASCA, ILLINOIS U.S.A.

Mouser Electronics

Authorized Distributor

Click to View Pricing, Inventory, Delivery & Lifecycle Information:

Knowles:

[BU-23842-000](#)