

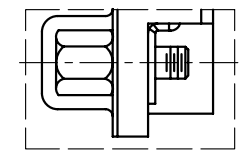
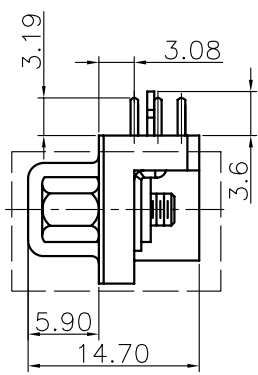
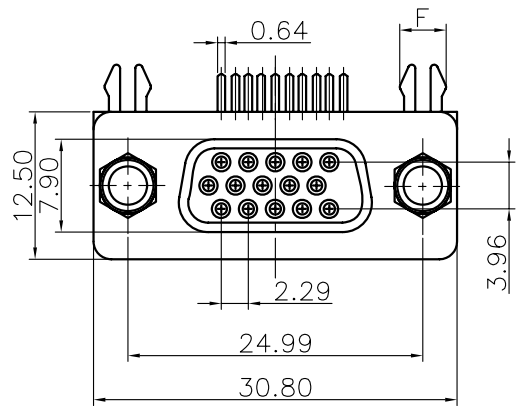
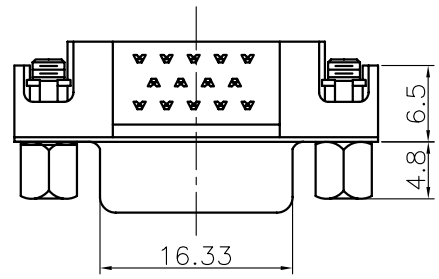
REV.	DESCRIPTION	DRAWN	CHECKED	APPROVED

NOTES:
 1.MATERIAL
 .Insulator:PBT+30%Glass Fiber(UL94V-0)
 .Contact:Brass

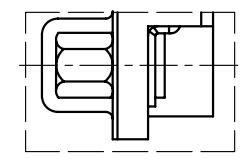
2.SPECIFICATION
 .Current Rating: 1.5 AMPS
 .Insulation Resistance:1000MΩ MIN. AT 500VDC
 .Dielectric Strength:500V for One minute
 .Operation Temperature:-55°C~+105°C

3. PRODUCT NUMBER CODE:

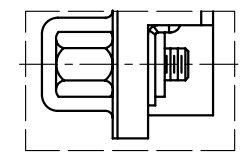
DS1038-01 - X X X X X X X
 BOARD LOCK DIM. F
 7: 3.70mm
 SCREW TYPE
 A:WITH SCREW TYPE
 B:WITH RIVET TYPE
 C:WITH SCREW AND RIVET TYPE
 CONTACT PLATING
 Si: SELECTIVE GOLD FLASH
 8: FULL GOLD FLASH
 SHELL PLATING
 N: Nickel
 T: Tin
 COLOR OF HOUSING
 B: BLACK
 U: BLUE
 C: BLUE(PC99)
 CONNECTOR TYPE
 M: MALE
 F: FEMALE
 No. OF CONTACT
 15: 15pos.



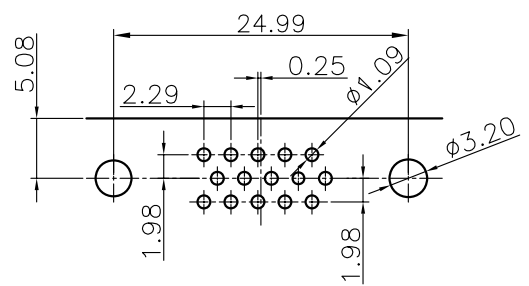
WITH SCREW TYPE



WITH RIVET TYPE



WITH SCREW AND RIVET TYPE



RECOMMEND PCB LAYOUT(TOLERANCE ±0.05)
 (VIEW FROM TOP SIDE)

GENERAL TOLERANCE		ANGLE TOLERANCE		PROJECTION		TITLE	D-SUB H.D. RIGHT ANGLE 3.08mm TYPE
X.	±0.60	X.	±5°	UNITS	mm		
.X	±0.38	.X	±3°	SHEET SIZE	A4	SERIES	DS1038-01 SERIES
.XX	±0.25	.XX	±2°	DHR-15FA, DHR-15MA			
DRAWING TYPE		CUSTOMER					
SCALE		1:1	SHEET		1 OF 1		
DRAWING NO.		C-DS1038-01-XXXXXXX					