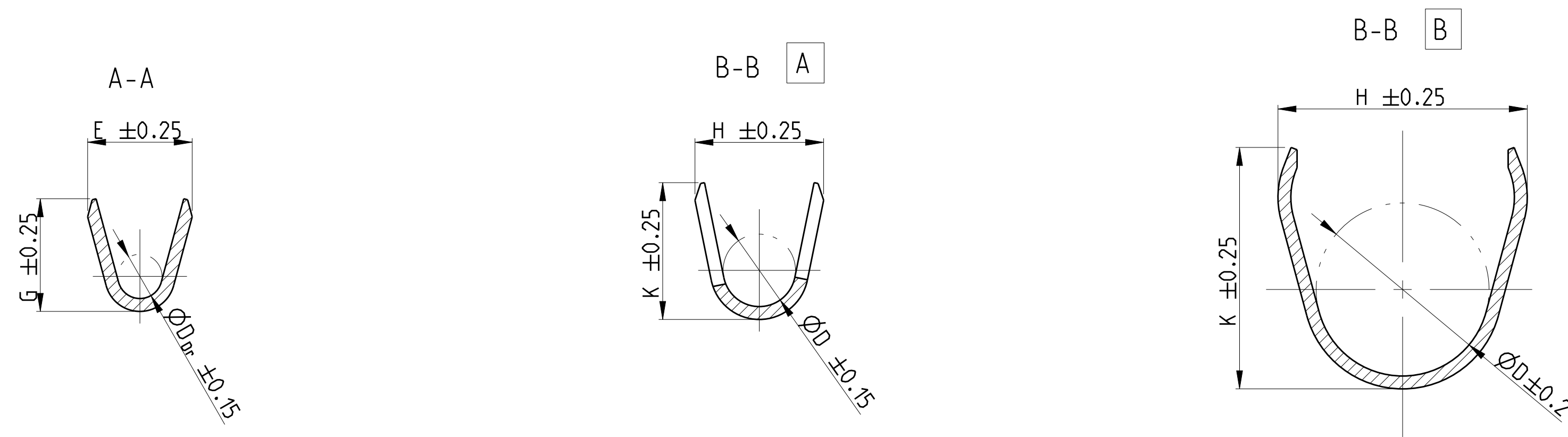


STRIP FORM Bandware

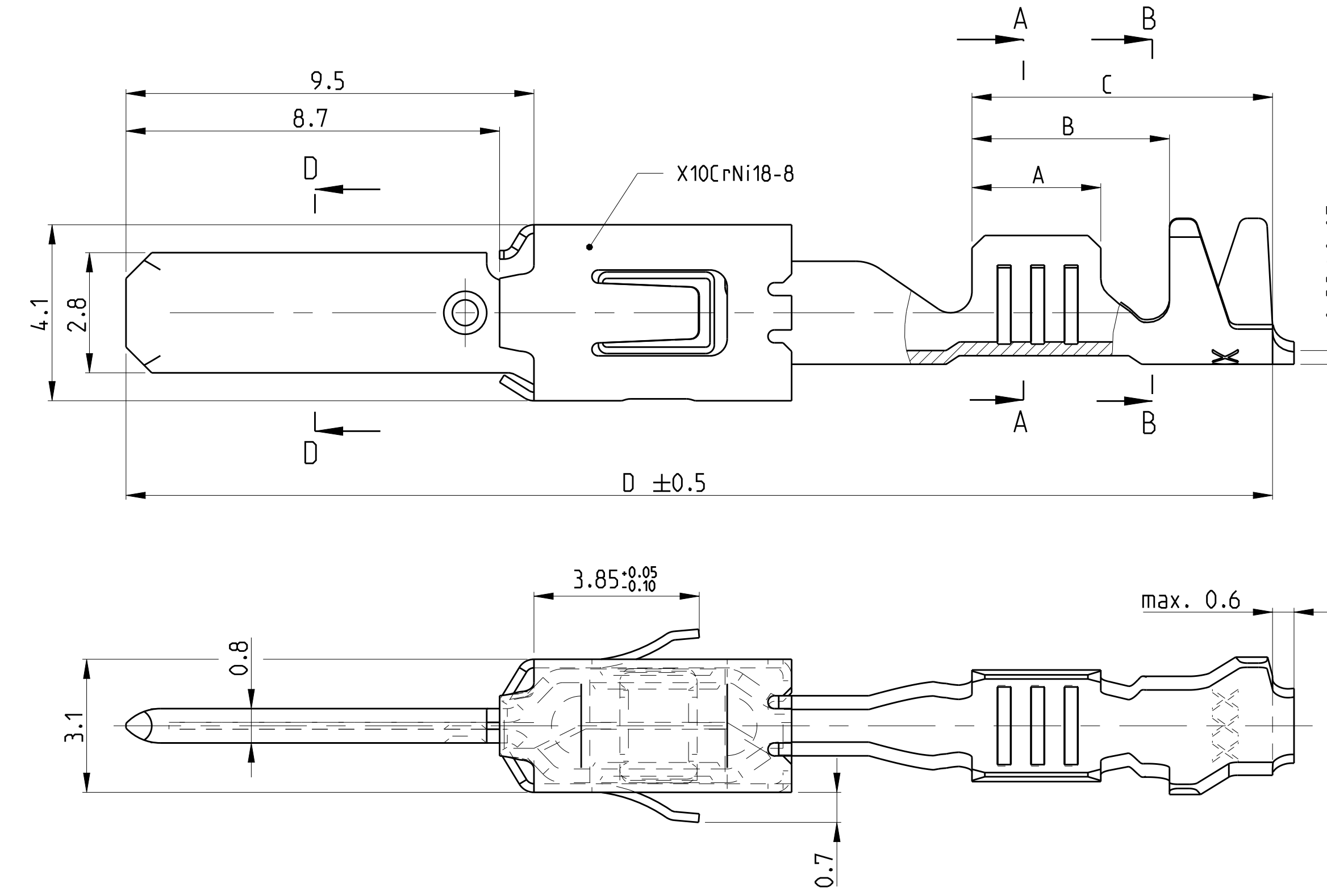


- 1 CONTACT AREA PRE SILVER MIN. 3µm
CANTILEVER SPRING PLAIN
Kontaktzone vorversilbert min. 3µm
Ueberfederer blank
- 2 CONTACT BODY NI-PLATING MIN. 0.5µm; CONTACT AREA PRE-GOLD MIN. 0.6µm
OVER NICKEL; CRIMP AREA PRE-TIN
CANTILEVER SPRING PLAIN
Kontaktkoerper vernickelt min. 0.5µm; Kontaktzone vorvergoldet min. 0.6µm ueber Nickel
Crimpzone vorverzinkt; Ueberfederer blank
- 3 IN THIS AREA CRACK SHAPING AT THE SURFACE PERMISSIBLE
In diesem Bereich Rissbildung in der Oberflaeche zulassig
- 4 PRE-TIN MIN. 1µm; CANTILEVER SPRING PLAIN
vorverzinkt min. 1µm; Ueberfederer blank

- 5 AWG 12 TXL 828905-1 OR / oder 282536-1
AWG 12 GXL 638865-1
- 6 ATTENTION! CONSTRUCTION OF THE CONTACT CAVITY IN THE AREA
OF THE SINGLE WIRE SEAL IS $\phi 6.4^{+0.1}_{-0.05}$
Achtung! Die Kammer ist im Bereich der Einzeldichtung
auf $\phi 6.4^{+0.1}_{-0.05}$ auszuliegen
- 7 PUNCHED WITH VOLATILIZING STAMPING-OIL
Gestanz mit verfluechtigendem Stanzoel

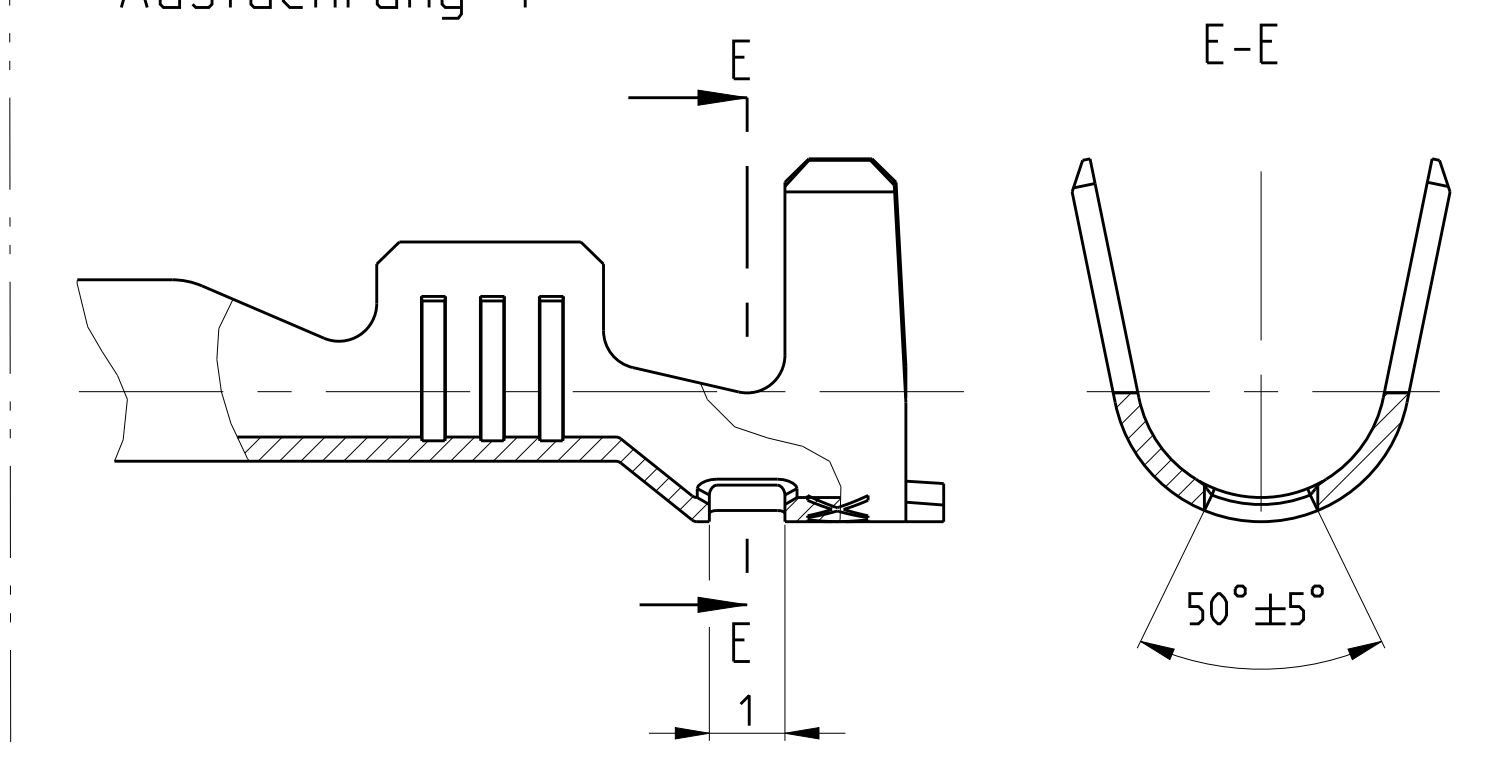
FLR-/FLK-WIRE FLR-/FLK-Leitung

DESIGN 1
Ausfuehrung 1

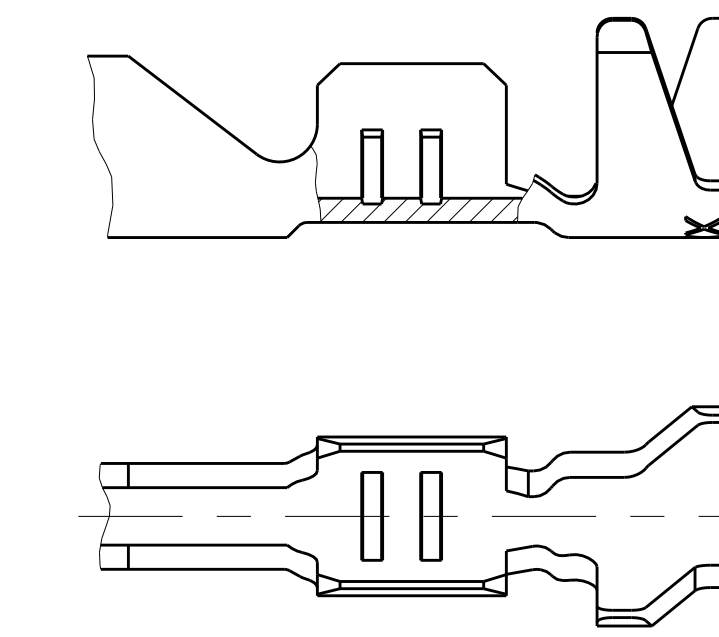


SINGLE WIRE SEAL Einzeldichtungssystem

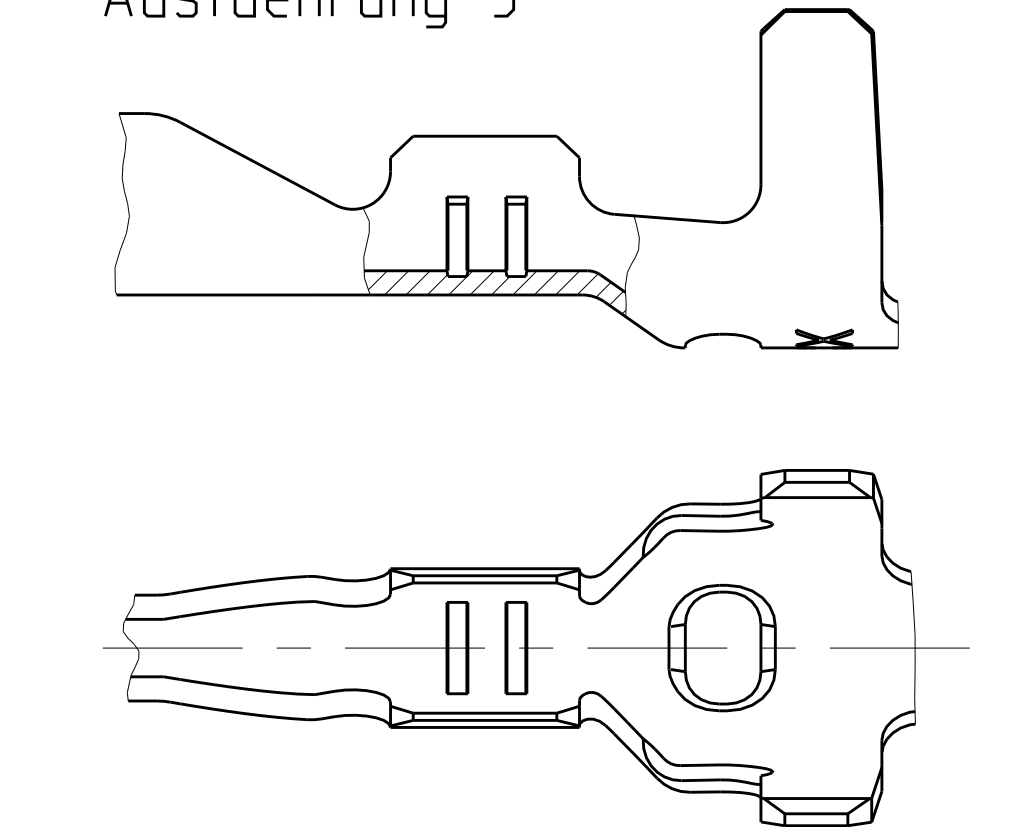
DESIGN 4
Ausfuehrung 4



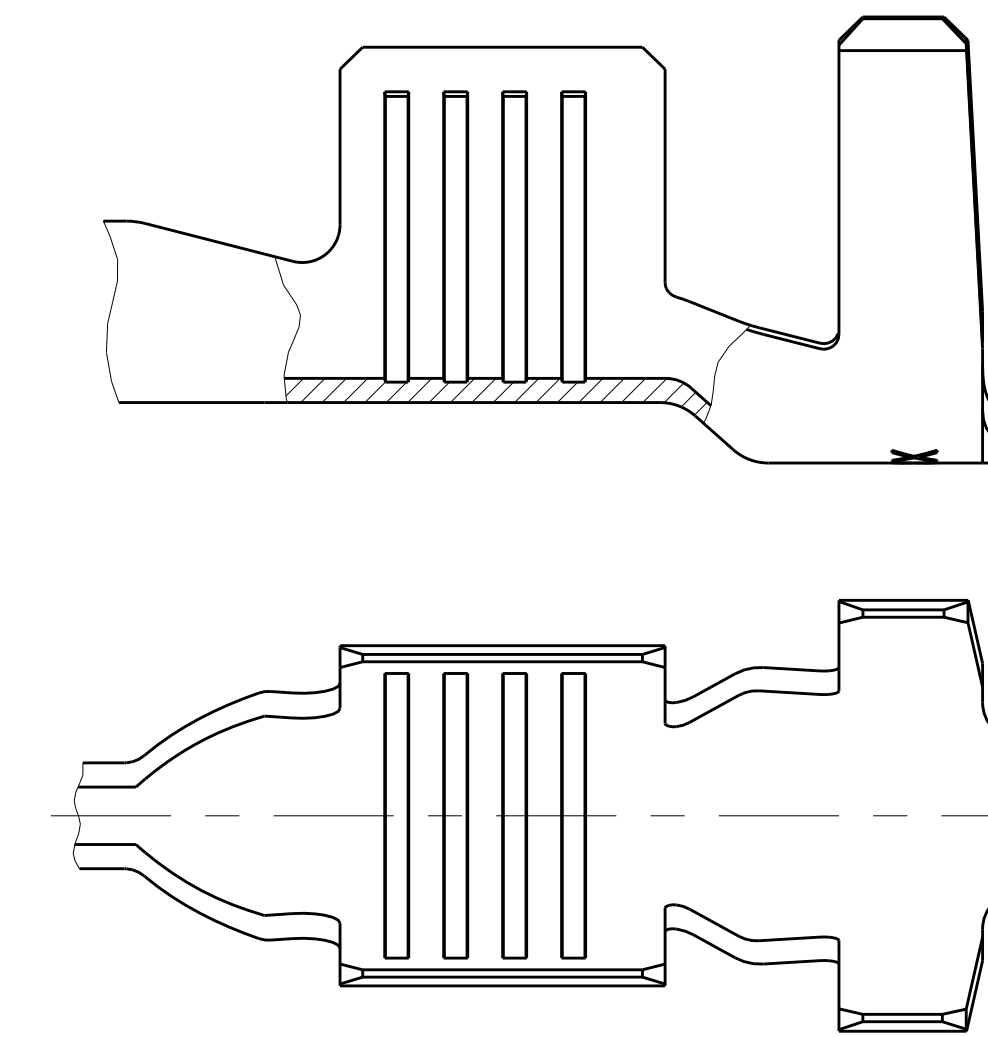
DESIGN 2
Ausfuehrung 2



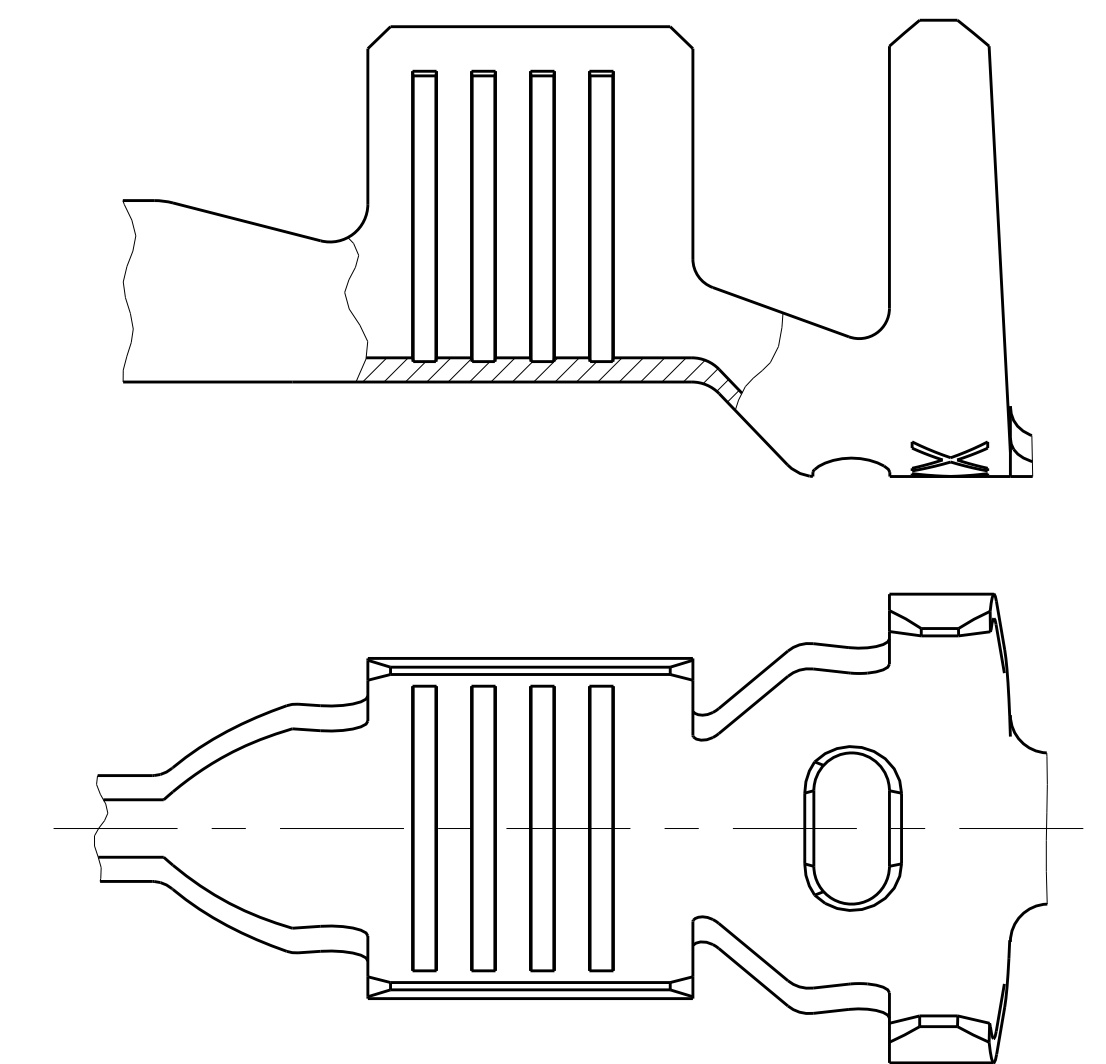
DESIGN 5
Ausfuehrung 5



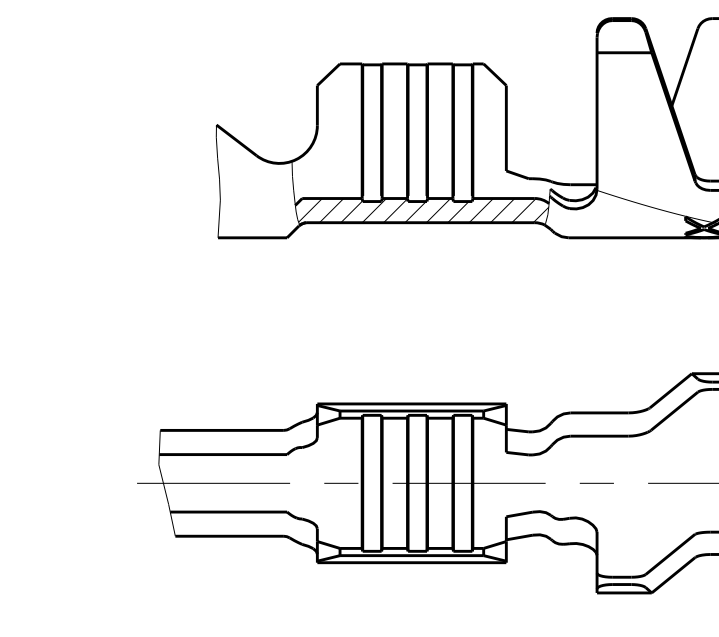
DESIGN 3
Ausfuehrung 3



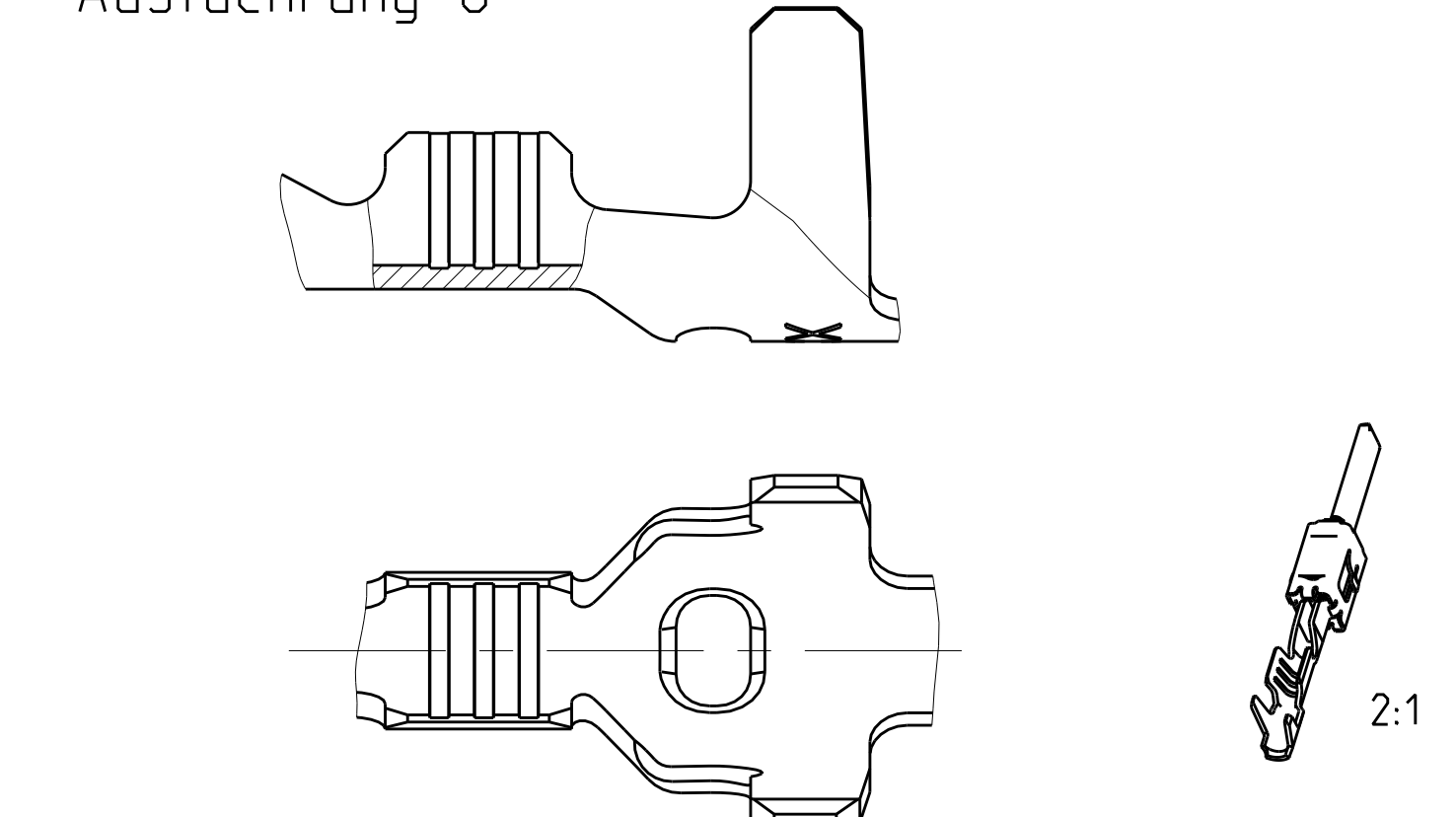
DESIGN 6
Ausfuehrung 6



DESIGN 7
Ausfuehrung 7



DESIGN 8
Ausfuehrung 8



SINGLE WIRE SEAL / Einzeldichtungssystem	REV	DESIGN	MATERIAL	SURFACE	DGB	INSULATION	WIRE CRIMP	INSUL. CRIMP	APPLICATION TOOL	HAND TOOL	TE	TE	SEE / siehe SECTION A-A Schnitt A-A				828922-1	
													E	G	D _{Dr}	H		K
SINGLE WIRE SEAL / Einzeldichtungssystem	1-1719504-2	A	4	CuSn4	△	12 AWG	max. 3.0	E = 4.0 G = 4.2 D _{Dr} = 2.0	A	H = 5.3 K = 5.0 D = 3.6	1852291-3	-	3.5	6.0	7.6	26.8	828922-1	
	1-1719504-1	A	4	CuSn0.20	△													
	3-968947-1	A	6	CuSn4	△													
	2-968947-2	A	6	CuFe	△													
	2-968947-1	A	6	CuSn4	△													
	1-968947-2	A	6	CuSn4	△													
	1-968947-1	A	6	CuSn4	△													
	2-962916-3	E	4	CuFe	△													
	2-962916-2	E	4	CuFe	△													
	2-962916-1	E	4	CuFe	△													
	1-962916-3	E	4	CuSn4	△													
	1-962916-2	E	4	CuSn4	△													
1-962916-1	E	4	CuSn4	△														
2-962915-3	E	4	CuFe	△														
2-962915-2	E	4	CuFe	△														
2-962915-1	E	4	CuFe	△														
6-962915-6	E	4	CuSn4	△														
1-962915-3	E	4	CuSn4	△														
1-962915-2	E	4	CuSn4	△														
1-962915-1	E	4	CuSn4	△														
5-965982-1	A	8	CuSn4	△														
1-965982-3	A	5	CuSn4	△														
1-965982-1	A	5	CuSn4	△														
3-968946-1	A	3	CuSn0.20	△														
2-968946-2	A	3	CuFe	△														
2-968946-1	A	3	CuSn4	△														
1-968946-2	A	3	CuSn4	△														
1-968946-1	A	3	CuSn4	△														
2-962843-3	C	1	CuFe	△														
2-962843-2	C	1	CuFe	△														
2-962843-1	C	1	CuSn4	△														
1-962843-3	C	1	CuSn4	△														
1-962843-2	C	1	CuSn4	△														
1-962843-1	C	1	CuSn4	△														
2-962842-3	E	1	CuFe	△														
2-962842-2	F	1	CuFe	△														
2-962842-1	E	1	CuSn4	△														
1-962842-3	E	1	CuSn4	△														
1-962842-2	E	1	CuSn4	△														
1-962842-1	E	1	CuSn4	△														
2-962841-3	F	1	CuFe	△														
2-962841-2	F	1	CuFe	△														
2-962841-1	F	1	CuSn4	△														
1-962841-3	F	1	CuSn4	△														
1-962841-2	F	1	CuSn4	△														
1-962841-1	F	1	CuSn4	△														
2-963860-3	B	2	CuFe	△														
2-963860-2	B	2	CuFe	△														
2-963860-1	B	2	CuSn4	△														
5-963860-2	A	7	CuSn4	△														
5-963860-1	A	7	CuSn4	△														
1-963860-3	B	2	CuSn4	△														
1-963860-2	B	2	CuSn4	△														
1-963860-1	B	2	CuSn4	△														

TE	DESIGN	MATERIAL	SURFACE	DGB	INSULATION	WIRE CRIMP	INSUL. CRIMP	APPLICATION TOOL	HAND TOOL	TE	TE
ORDER-NO.	REV	Ausfuehrung	Werkstoff	mm ²	mm	mm	mm	ANSCHLAGWERKZEUG	HANDZANGE	ORDER-NO.	ORDER-NO.
STRIPFORM			Oberflaeche		Isolations	Drathcrimp	Isolationscrimp	Strichdruckwerkzeug	Handzange	SINGLE WIRE SEAL	SEALING PLUG
Bandware					Isolations	Bandware	Bandware	EXTRAKTIONSTOOL	Handzange	Einzeldichtungssystem	Blindstopfen
						CRIMP DIMENSION mm	CRIMP DIMENSION mm	Ausdruckwerkzeug		(Kammerdurchmesser)	
						mm	mm	No. 968107-1			

THIS DRAWING IS A CONTROLLED DOCUMENT. DATE: 14 JUN 1999. BY: K. Gerlach. CH: M. Bleicher. APPROVED: [Signature]

PRODUCT GROUP DRAWING FOR TAB 2.8x0.8
Produktgruppenzeichnung fuer Flachstecker 2.8x0.8

SCALE: 10:1. SHEET: 1 OF 1. REV: A18