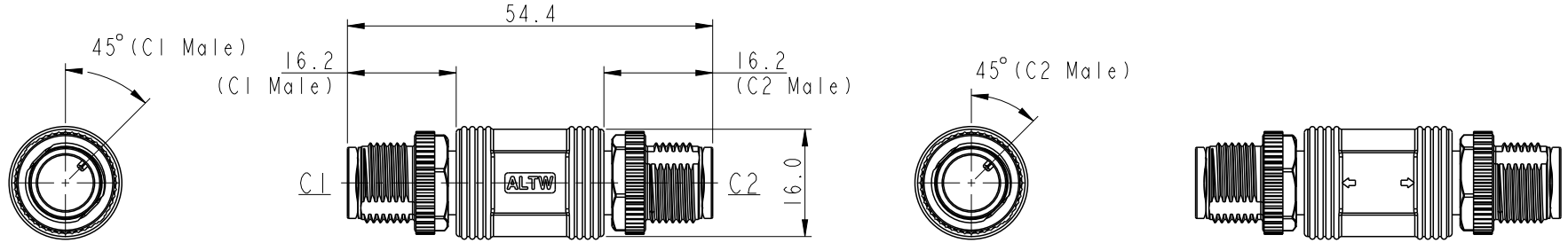
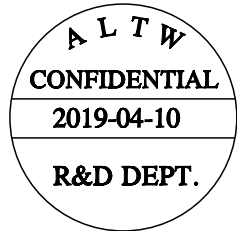
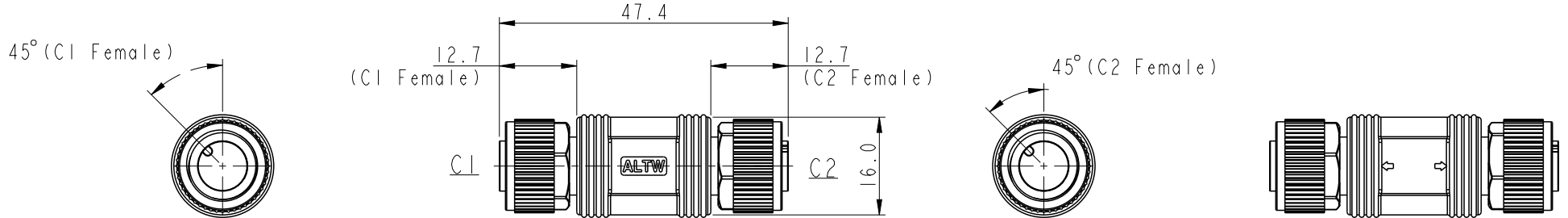


| REV. | ECN NO. | DATE | SIGN | DESCRIPTION |
|------|---------|------------|----------|-------------------|
| A | | 2019/04/10 | Bovan Lu | Initial Released. |
| | | | | |

Male Connector Position & Key Direction



Female Connector Position & Key Direction



- Note:
- * IP: IP68 (1M/24Hr.)
 - * Connector: Thermoplastic
 - * Pin: Copper Alloy
 - * Nut: Metal
 - * Other:

* This drawing is common drawing of series products.
 The figure only shows individual position and key direction of male/female connectors.
 Specific state of C1,2 connectors depends on part number. (see sheet 2/3)

| | | | | | | | | |
|--------------------------------|--------------|-----------------|---------------------------------|---------|--------------------------------------|--------------------------------|-------------------------|--------------------|
| UNIT:mm TOLERANCE ±0.5mm | | | TITLE M12, A-Code, I-Adaptor | | Amphenol LTW 安費諾亮泰企業股份有限公司 | ITEM NO | DRAWN BY Bovan Lu | DATE 2019-04-10 |
| | SCALE 1:1 | SIZE A4 | SHEET 1 | OF 3 | | DWG NO IA-AXXX-AXXX-0000-XX | CHECKED BY Neo Tsai | DATE 2019-04-10 |
| | REV. A | WC-REV. A.14 | Inspection item | | | CUSTOMER ALTW | APPROVED BY Max Yang | DATE 2019-04-10 |

THIS DOCUMENT IS SUBJECT TO CHANGE WITHOUT NOTICE. IT IS CONFIDENTIAL AND A PROPERTY OF Amphenol LTW. DISCLOSURE TO THIRD PARTY HAS TO BE AUTHORIZED BY Amphenol LTW.

1 A - A X X X - A X X X - 0 0 0 0 - X X

-01: All connectors have the same number of pins.

C1 Connector Type

03: 3 pin
04: 4 pin
:
12: 12 pin

C1 Gender

M: Male Connector, Male Pin
F: Female Connector, Female Pin

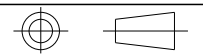
C2 Connector Type

03: 3 pin
04: 4 pin
:
12: 12 pin

C2 Gender

M: Male Connector, Male Pin
F: Female Connector, Female Pin

UNIT:mm



TOLERANCE

—

| | | | |
|---------------------------------|-----------------|--------------------|--|
| TITLE MI2, A-Code, 1-Adaptor | | | |
| SCALE 1:1 | SIZE A4 | SHEET 2 OF 3 | |
| REV. A | WC-REV. A.14 | Ⓞ: Inspection item | |

Amphenol LTW

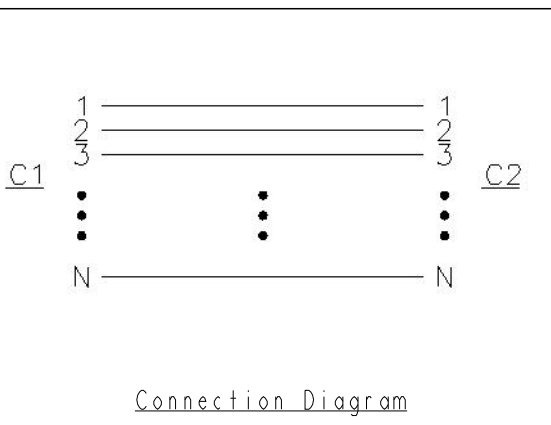
安費諾亮泰企業股份有限公司

| | | |
|--------------------------------|-------------------------|--------------------|
| ITEM NO | DRAWN BY Bovan Lu | DATE 2019-04-10 |
| DWG NO 1A-AXXX-AXXX-0000-XX | CHECKED BY Neo Tsai | DATE 2019-04-10 |
| CUSTOMER ALTW | APPROVED BY Max Yang | DATE 2019-04-10 |

THIS DOCUMENT IS SUBJECT TO CHANGE WITHOUT NOTICE. IT IS CONFIDENTIAL AND A PROPERTY OF AMPHENOL LTW. DISCLOSURE TO THIRD PARTY HAS TO BE AUTHORIZED BY AMPHENOL LTW.

| | | A-code | | | | | | |
|---|---------|---------------------------------------|---|---|--|--|--|---|
| | | 3 Pin | 4 Pin | 5 Pin | 6 Pin | 8 Pin | 10 Pin | 12 Pin |
| F | Male | | | | | | | |
| | Female | | | | | | | |
| | | Pin# Color | Pin# Color | Pin# Color | Pin# Color | Pin# Color | Pin# Color | Pin# Color |
| D | Pin Out | Pin1 Black Pin3 White Pin4 Blue | Pin1 Black Pin2 White Pin3 Blue Pin4 Green | Pin1 Black Pin2 White Pin3 Blue Pin4 Green Pin5 Red | Pin1 Black Pin2 White Pin3 Blue Pin4 Green Pin6 Red Pin7 Gray | Pin1 Black Pin2 White Pin3 Blue Pin4 Green Pin5 Red Pin6 Gray Pin7 Yellow Pin8 Orange | Pin1 Black Pin2 White Pin3 Blue Pin4 Green Pin5 Red Pin6 Gray Pin7 Yellow Pin8 Orange Pin9 Brown Pin10 Purple | Pin1 Black Pin2 White Pin3 Blue Pin4 Green Pin5 Red Pin6 Gray Pin7 Yellow Pin8 Orange Pin9 Brown Pin10 Purple Pin11 White/Red Pin12 Pink |

Pin Assignments Front View



| | | | | | | | | |
|---|-----------|---|---------------------------------|-----------------|-----------------|--------------------------------|-------------------------|--------------------|
| A | UNIT:mm | | TITLE MI2, A-Code, I-Adaptor | | | ITEM NO | DRAWN BY Bovan Lu | DATE 2019-04-10 |
| | TOLERANCE | — | SCALE 1:1 | SIZE A4 | SHEET 3 OF 3 | DWG NO IA-AXXX-AXXX-0000-XX | CHECKED BY Neo Tsai | DATE 2019-04-10 |
| | | | REV. A | WC-REV. A.14 | Inspection item | CUSTOMER ALTW | APPROVED BY Max Yang | DATE 2019-04-10 |

Amphenol LTW

安費諾亮泰企業股份有限公司

Mouser Electronics

Authorized Distributor

Click to View Pricing, Inventory, Delivery & Lifecycle Information:

[Amphenol:](#)

[IA-A05M-A05M-0000-01](#) [IA-A04F-A04F-0000-01](#) [IA-A12F-A12F-0000-01](#) [IA-A10M-A10M-0000-01](#) [IA-A06M-A06M-0000-01](#) [IA-A03F-A03F-0000-01](#) [IA-A03M-A03M-0000-01](#) [IA-A12M-A12M-0000-01](#) [IA-A04M-A04M-0000-01](#) [IA-A08M-A08M-0000-01](#) [IA-A08F-A08F-0000-01](#) [IA-A06F-A06F-0000-01](#) [IA-A05F-A05F-0000-01](#) [IA-A10F-A10F-0000-01](#)