

P  **R**  **D O X™**
LONG BATTERY LIFE SINGLE STATION
BATTERY POWERED
PHOTOELECTRIC SMOKE DETECTOR
SD360 USER'S MANUAL

INTRODUCTION

PARADOX single station photoelectric smoke detector SD360 is designed to sense smoke that comes into the alarm chamber. It does not sense gas, or flame. This smoke detector is designed to give early warning of developing fires by giving off the alarm sounds from its built-in alarm horn. It can provide precious time for you and your family to escape before a fire spreads. However, the smoke detector makes such pre-warning of fire accident possible, only if the smoke detector is located, installed, and maintained properly as described in this User's Manual.

WARNING: This smoke detector is designed for use in a single residential unit only, which means that it should be used inside a single family home or apartment. It is not meant to be used in lobbies, hallways, basements, or another apartment in multi-family buildings, unless there are already working alarms in each family unit. Smoke detectors, placed in common areas outside of the individual living unit, such as on porches or in hallways, may not provide early warning to residents. In multi-family buildings, each family living unit should set up its own detectors.

WARNING: This detector is not meant to be used in non-residential buildings. Warehouses, industrial or commercial buildings, and special purpose non-residential buildings require special fire detection and alarm systems. This detector alone is not a suitable substitute for complete fire detection systems for places where many people live or work, such as hotels or motels. The same is true of dormitories, hospitals, nursing homes or group homes of any kind, even if they were once single family homes. Please refer NFPA 101, the Life Safety Code, 72A for smoke detector requirements for fire protection in buildings not defined as "households".

WARNING: This detector will not alert people who are hard of hearing. It is strongly recommended that the special-purpose smoke detectors using lights or vibrating devices, should be installed to alert occupants who are hard of hearing.

LOCATIONS TO INSTALL YOUR SMOKE DETECTOR

Smoke detectors should be installed in accordance with the NFPA Standard 74 (National Fire Protection Association, Battery march Park, Quincy, MA 02169). For complete coverage in residential units, smoke detectors should be installed in all rooms, halls, storage areas, basements, and attics in each family living unit. Minimum coverage is one detector on each floor and one in each sleeping area. Here, we have useful tips for you:

- Install a smoke detector in the hallway outside every separate bedroom area, as shown in Figure 1. Two detectors are required in homes with two bedroom areas, as shown in Figure 2.
- Install a smoke detector on every floor of a multi-floor home or apartment, as shown in Figure 3.
- Install a minimum of two detectors in any household.
- Install a smoke detector inside every bedroom.
- Install smoke detectors at both ends of a bedroom hallway if the hallway is more than 40 feet (12 meters) long.
- Install a smoke detector inside every room where one sleeps with the door partly or completely closed, since smoke could be blocked by the closed door and a hallway alarm may not wake up the sleeper if the door is closed.

Figure 1:
 LOCATIONS FOR PLACING SMOKE DETECTORS
 FOR SINGLE RESIDENCE WITH ONLY ONE
 SLEEPING AREA

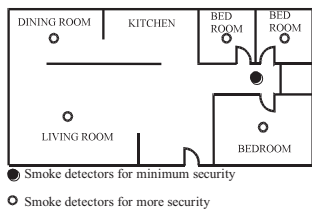


Figure 2:
 LOCATIONS FOR PLACING SMOKE DETECTORS
 FOR SINGLE-FLOOR RESIDENCE WITH MORE
 THAN ONE SLEEPING AREA

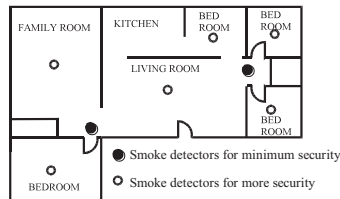
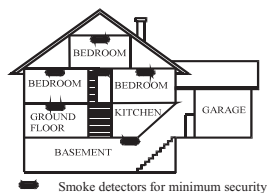


Figure 3:
 LOCATION FOR PLACING SMOKE DETECTORS
 FOR A MULTI-FLOOR RESIDENCE



- Install basement detectors at the bottom of the basement stairwell.
 - Install second-floor detectors at the top of the first-to-second floor stairwell.
- Be sure no door or other obstruction blocks the path of smoke to the detector.**
- Install additional detectors in your living room, dining room, family room, attic, utility and storage rooms.
 - Install smoke detectors as close to the center of the ceiling as possible. If this is not practical, put the alarm on the ceiling, no closer than 4 inches (10 cm) from any wall or corner, as shown in Figure 4.
 - If ceiling mounting is not possible and wall mounting is permitted by your local and state codes, put wall-mounted detectors between 4 and 6 inches (10 ~ 15 cm) from the ceiling, also see Figure 4.
 - If some of your rooms have sloped, peaked, or gabled ceilings, try to mount detectors 3 feet (0.9 meter) measured horizontally from the highest point of the ceiling as shown in Figure 5.

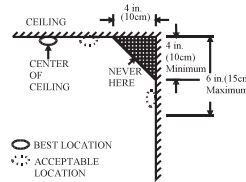


Figure 4:
 RECOMMENDED BEST AND ACCEPT-
 ABLE LOCATIONS TO MOUNT SMOKE
 DETECTORS

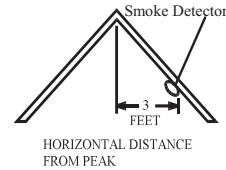


Figure 5:
 RECOMMENDED LOCATION TO MOUNT SMOKE
 DETECTORS IN ROOMS WITH SLOPED,
 OR PEAKED CEILING

CAUTION (As required by the California State Fire Marshall)

"Early warning fire" detection is best achieved by the installation of fire detection equipment in all rooms and areas of the household as follows: (1) A smoke detector installed in each separate sleeping area (in the vicinity, but outside of the bedrooms), and (2) smoke detectors in the living rooms, dining rooms, bedrooms, kitchens, hallways, attics, furnace rooms, closets, utility and, storage rooms, basements and attached garages."

For your information, NFPA Standard 72, Section 29 reads as follows: "29.5.1 Smoke detectors shall be installed outside of each separate sleeping area in the immediate vicinity of the bedrooms and on each additional story of the family living unit including basements and excluding crawl spaces and unfinished attics.

The provisions of 29.5.1 represent the minimum number of detectors required by this standard. It is recommended that the householder consider the use of additional smoke detectors for increased protection for those areas separated by a door from the areas protected by the required smoke detectors under 29.5.1 above. The recommended additional areas are living room, dining room, bedroom(s), kitchen, attic (finished or unfinished), furnace rooms, utility room, basement, integral or attached garage, and hallways not included in 29.5.1 above. However, the use of additional detectors remains the option of the householder." We recommend complete coverage and use of additional smoke detectors.

LOCATIONS NOT TO INSTALL YOUR SMOKE DETECTORS

Nuisance alarms take place when smoke detectors are installed where they will not work properly. To avoid nuisance alarms, do not install smoke detectors in the following situations:

- Combustion particles are the by-products of something that is burning. Thus in or near areas where combustion particles are present you do not install the smoke detector to avoid nuisance alarms, such as kitchens with few windows or poor ventilation, garages where there may be vehicle exhaust, near furnaces, hot water heaters, and space heaters.
- Do not install smoke detectors less than 20 feet (6 meters) away from places where combustion particles are normally present, like kitchens. If a 20-foot distance is not possible, e.g. in a mobile home, try to install the detector as far away from the combustion particles as possible, preferably on the wall. To prevent nuisance alarm alarms, provide good ventilation in such places.

IMPORTANT: For any reason, do not disable the detector to avoid nuisance alarms.

- When air streams passing by kitchens, the way how a detector can sense combustion particles in normal air-flow paths is graphically shown in Figure 6, which indicates the correct and incorrect smoke detector locations concerning this problem.

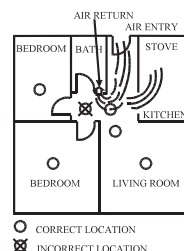


Figure 6:
 RECOMMENDED SMOKE DETECTORS LOCATIONS
 TO AVOID AIR STREAMS WITH COMBUSTION PARTICLES

- In damp or very humid areas, or near bathrooms with showers. Moisture in humid air can enter the sensing chamber, then turns into droplets upon cooling, which can cause nuisance alarms. Install smoke detector at least 10 feet (3 meters) away from bathrooms.
- In very cold or very hot areas, including unheated buildings or outdoor rooms. If the temperature goes above or below the operating range of smoke detector, it will not work properly. The temperature range for your smoke detector is 0~49°C.
- In very dusty or dirty areas, dirt and dust can build up on the detector's sensing chamber, to make it overly sensitive. Additionally, dust or dirt can block openings to the sensing chamber and keep the detector from sensing smoke.
- Near fresh air vents or very drafty areas like air conditioners, heaters or fans, fresh air vents and drafts can drive smoke away from smoke detectors.
- Dead air spaces are often at the top of a peaked roof, or in the corners between ceilings and walls. Dead air may prevent smoke from reaching an alarm. See Figures 4 and 5 for recommended mounting locations.
- In insect-infested areas. If insects enter a detector's sensing chamber, they may cause a nuisance alarm. Where bugs are a problem, get rid of them before putting up a detector.
- Near fluorescent lights, electrical "noise" from fluorescent lights may cause nuisance alarms. Install smoke detectors at least 5 feet (1.5 meters) from such lights.

WARNING: Never remove power from a DC-power operated detector to stop a nuisance alarm. Open a window or fan the air around the detector to get rid of the smoke. The alarm will turn itself off when the smoke is gone. If nuisance alarms persist, attempt to clean the detector as described in this Installation Manual.

WARNING: Do not stand close to the detector when the alarm is sounding. The alarm is loud in order to wake you in an emergency. Too much exposure to the horn at close range may be harmful to your hearing.

INSTALLING YOUR SMOKE DETECTOR

The SD 360 smoke detector is made to be mounted on the ceiling or on the wall if necessary. Since this smoke detector is a single-station type, it cannot be linked to other detectors.

WARNING: Do not connect the SD360 smoke detector to any other alarm or auxiliary device. Connecting anything else to this detector will keep it from working properly.

Read "LOCATIONS TO INSTALL YOUR SMOKE DETECTORS" and "LOCATIONS NOT TO INSTALL YOUR SMOKE DETECTORS" section in this Manual first, then decide where to install your smoke detector. Please follow these steps to install your smoke detector:

1. At the place where you are going to install the detector, draw a horizontal line six inches long.
2. Remove the mounting bracket from your unit by rotating it counterclockwise.
3. Place the bracket so that the two longest hold slots are aligned on the line. In each of keyhole slots, drawing a mark to locate a mounting, plug and screw.
4. Remove the bracket.
5. Using a 3/16-inch(5mm) drill bit, drills two holes at the marks and insert plastic wall plugs. Put the detector away from plastic dust on it when you drill holds for mounting.
6. Using the two screws and plastic wall plugs (all supplied), attach the bracket to the wall.
7. Line up the slot of the bracket and the detector. Push the detector onto the mounting bracket on turn it clockwise to fix it into the place. Pull onward on the smoke detector to make sure it is securely attached to the mounting bracket.

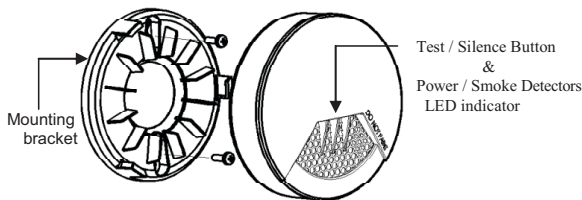


Figure 7

CAUTION: This smoke detector comes with cover latches that will prevent the smoke detector cover from closing if battery is not installed. This tells you that the detector will not work until a new battery is properly installed.

NOTE: The alarm horn will beep once after the detector is installed with battery and mounted with bracket 2~4 seconds. This means the smoke detector is working normally and also indicates that the battery is positioned properly. Close cover, and then press the test button, holding it down for about 3 seconds until the horn sounds. The horn should sound a loud, pulsating alarm. This means the unit is working properly.

PRODUCT SPECIFICATION

Model: SD360

Sensitivity: 1.38 – 2.36%/ft

Battery Power: 3V lithium battery, Duracell or Panasonic CR123A

Warning Sound Pattern: Three Pulse temporal pattern

Alarm Audibility: 85dBA/3m

Operation Temperature Range: 0~49°C (32°F~120°F)

Battery Life: One year

Radio Frequency: 433MHz

Wireless Range: 35m (115ft)

Relative Humidity: 10~85%

Size: 120mm diameter x 5.3mm depth

STANDBY MODE

The red LED, as the ALARM indicator, are featured with the smoke detector. It can be seen through the clear test button on the cover of the unit. When a red LED flashes once every 334 seconds, it indicates the smoke detector is under normal operation. When the smoke detector senses smoke and simultaneously sounds an audible alarm with 3 beeps, pause and 3 beeps. The red LED will flash continuously and rapidly.

SILENCE FEATURE

The silence feature can temporarily quite an alarm for up to 10 minutes. To use this feature, press test/silence button on the cover when it alarms. However, if the smoke concentration around the smoke detector unit is still at alarming level after 10 minutes of silence, the unit will re-alarm immediately.

LOW BATTERY WARNING SIGNAL

If the alarm horn begins to chirp once in 43 seconds with yellow LED flashing, it indicates that the smoke detector's battery is weak. Replace new battery immediately. Keep fresh batteries on hand for this purpose.

NOTE: Use only the replacement CR123A 3V (Panasonic) battery

This low battery warning signal should last for up to 30 days, but you should replace the battery immediately to secure your protection. Also upon initial low battery condition, the detector will send a low battery indicator to the receiver after 5 minutes. The smoke detector will continue to transmit a low battery signal every 12 hours until the battery is replaced.

TAMPER SWITCH FEATURE:

If the smoke detector is not mounted into the bracket properly within 5 minutes after battery is installed, the tamper function is triggered and the Yellow LED is steadily on. If the smoke detector is still not mounted into the bracket properly 5 minutes after battery is installed, you will hear temporal three sound with yellow LED steadily on until smoke detector is mounted back into bracket properly.

MALFUNCTION (ERROR) SIGNAL:

If you hear 3 "beep" with yellow LED flashing 3 times in 43 seconds, it indicates that the smoke detector does not work properly, please have it repaired or serviced.

TESTING YOUR SMOKE DETECTOR

If you suspect that your smoke detector does not go into alarm, test it by pressing the test button to ensure it works properly. When the Test button is pressed, the smoke detector sends an alarm signal to the wireless receiver.

*If the smoke detector zone is defined as an **Instant 24hr Fire Zone**, the alarm signal is immediately sent to the central monitoring station; contact the Central Monitoring Station to advise them of the test and to avoid a false alarm.

* If the smoke detector zone is defined as a **Delayed 24hr Fire Zone**, the alarm signal is not sent to the central monitoring station.

Test the alarm weekly by pushing firmly on the test button for around 4 seconds until the horn sounds, the sound pattern is 3 beeps, pause, and then 3 beeps with red LED flashing continuously and rapidly.

*If the smoke detector beeps three beeps with yellow LED flashing three times in 43 seconds, it indicates the smoke detector is not working properly, it requires to be repaired or serviced.

To cease the alarm:

* If the zone is defined as **Delayed Fire Zone**, the alarm will stop automatically.

* If the zone is defined as an **Instant Fire Zone**, enter a valid code # (PIN). This is the only way to make sure that the smoke detector unit is working properly. If the unit fails to test properly, have it repaired or replaced immediately.

WARNING: Never use an open flame of any kind to test your alarm.

You may set fire to damage the alarm, as well as your home. The built-in test switch accurately tests all functions as required by Underwriters' Laboratories. They are the only correct ways to test the unit.

WARNING: When you are not testing the unit and the alarm horn sounds this means the smoke detector has sensed smoke or combustion particles in the air. Be sure that the alarm horn is a warning of a possible serious situation, which requires your immediate attention.

- The alarm could be caused by a nuisance situation. Cooking smoke or a dusty furnace, sometimes called "friendly fires" can cause the alarm to sound. If this

happens, open a window or fan the air to remove the smoke or dust. The alarm will turn off as soon as the air is completely clear.

NOTE: Do not disconnect the power or remove the battery from the smoke detector. This will remove your protection from fires.

WARNING: Do not use any other kind of battery. This smoke detector may not operate properly with other kind of battery.

BATTERY INSTALLATION

1. Open battery compartment (see figure as below).
2. Install battery into compartment and make sure the "+" and "-" ends of each battery are aligned properly.
3. After battery is installed in compartment, you will hear a chirp which indicates the unit is receiving battery power.

TAKING CARE OF YOUR SMOKE DETECTOR

Your smoke detector is designed to be maintenance-free as possible. To keep your smoke detector in good working condition, you must test the unit weekly, as referring to section "TESTING YOUR SMOKE DETECTOR".

Regular Maintenance:

- Open the cover and vacuum the dust off the alarm's sensing chamber at least once a month.

Remove battery before cleaning. To clean the smoke detector, use soft brush attachment to your vacuum. Carefully remove any dust on the smoke detector components, especially on the openings of the sensing chamber. Replace battery after cleaning. Test the smoke detector to make sure battery is working correctly. Never use water, cleaners as they may damage the unit.

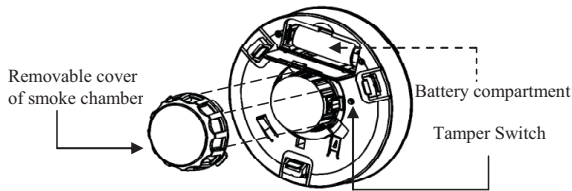


Figure 8

NOTE: If nuisance alarms keep coming from the unit, you should check whether the smoke detector unit's location is adequate. Refer to section "WHERE TO INSTALL SMOKE DETECTORS". Move your smoke detector if it is not located properly. Clean the unit as described above.

TIPS TO ENHANCE YOUR PROTECTION FROM FIRES

Putting up smoke detectors is only one step in protecting your family from fires. You must also reduce the chances that fires will start in your home. And you must increase your chances of escaping safely if one does start. To have a good fire safety program you must apply the following tips to enhance your family's protection from fires:

1. Install smoke detectors properly. Carefully follow all the instructions in this manual. Keep your smoke detectors clean, and test them every week.
2. Remember that smoke detector that do not work will not alert you. Replace your smoke detectors immediately if they are not working properly.
3. Follow fire safety rules, and prevents hazardous situations:
 - Use smoking materials properly. Never smoke in bed.
 - Keep matches and cigarette lighters away from children.
 - Store flammable materials in proper containers. Never use them near open flame or sparks.
 - Keep electrical appliances in good condition. Do not overload electrical circuits.
 - Keep stoves, fireplaces, chimneys, and barbecue grills grease free.
 - Make sure they are properly installed and away from any combustible materials.
 - Keep portable heaters and open flames such as candles away from combustible materials.
 - Do not allow rubbish to accumulate.
 - Keep a supply of extra batteries on hand for your battery powered smoke detectors.
4. Develop a family escape plan and practice it with your entire family. Be sure to include small children in your practice.
 - Draw a floor plan of your home, and find two ways to exit from each room. There should be one way to get out of each bedroom without opening the door.
 - Explain to children what the smoke detector signal means. Teach them that they must be prepared to leave the home by themselves if necessary. Show them how to check to see if doors are hot before opening them. Show them how to stay close to the floor and crawl if necessary. Show

them how to use the alternate exit if the door is hot and should not be opened.

- Decide on a meeting place which has a safe distance from your house. Make sure that all your children understand that they should go and wait for you there if there is a fire.
- Hold fire drills at least every 6 months to make sure that everyone, even small children, knows what to do to escape safely.
- Know where to go to call the Fire Department from outside your home.
- Provide emergency equipment, such as fire extinguishers, and teach your family to use this equipment properly.

MORE TIPS TO FACE A FIRE IN YOUR HOME

If you have made a family escape plan and practiced it with your family, you have increased their chances of escaping safely. Go over the following rules with your children each time you have fire drills. This will help everyone remember them in case of a real fire emergency.

1. Don't panic and stay calm. Your safe escape may depend on thinking clearly and remembering what you have practiced.
2. Get out of the house as quickly as possible. Follow a planned escape route. Do not stop to collect anything or to get dressed.
3. Feel the doors to see if they are hot. If they are not, open them carefully. Do not open a door if it is hot. Use an alternate escape route.
4. Stay close to the floor. Smoke and hot gases rise.
5. Cover your nose and mouth with a wet or damp cloth. Take short, shallow breaths.
6. Keep doors and windows closed. Open them only if you have to in order to escape.
7. Meet at your planned meeting place after leaving the house.
8. Call the Fire Department as soon as possible from outside your house. Give the address and your name.
9. Never go back inside a burning building. Contact your local Fire Department. They will give you more ideas about how to make your home safer from fires and how to plan your family's escape.

WIRELESS TRANSMITTER INFORMATION

Wireless Installation Location

The location of the wireless smoke detector affects the overall performance of the wireless system. In order to ensure the best possible signal reception, the following criteria should be respected whenever possible:

- Select an installation site that is free of obstacles that reflect and absorb radio frequency (RF) signals, as well as interference that may distort signals. Avoid installation near or in the path of strong RF fields (i.e. neon lights, computers), and on or near metal objects, circuit breaker boxes, air conditioners, and heater ducts since they may cause interference and reduce the module's sensitivity.
- Select a site that is not susceptible to drastic temperature changes.
- Respect the maximum allowable distance between the smoke detector and the wireless receiver.

NOTE: For procedure to set up the detector to communicate with the panels, refer to EVO192 Manual: EVO192-EI04; SP6000 Manual: MGSP-EI12.

Smoke Detector Zone Assignment

To assign the smoke detector to a wireless receiver, press the smoke detector's Test button.

Check-In Supervision

The SD360 transmits a check-in supervision signal to the receiver at regular intervals. This value is pre-determined and cannot be programmed.

Alarm Transmission

Upon detection of an alarm condition (smoke) the detector will transmit an alarm signal every 30 seconds to the wireless receiver until the condition stops. Once the alarm condition has stopped, the detector will wait 5 seconds then transmit a restore signal to the wireless receiver. The restore signal is transmitted only once to the receiver after an alarm condition has stopped.

Replacing the Battery

After replacing the battery, test the detector to ensure proper functioning (refer to Testing the Smoke Detector).

Product Compatibility:

Smoke detectors are not to be used with detector guards unless the combination has been evaluated and found suitable for that purpose.

NOTE: ETL:/cETL note: SD360 is approved to operate only with:

- EVO192 listed panel using RTX3 receiver.
- SP6000 listed panel using RTX3 receiver.

WARNING: This device is not intended as life-saving device and should not be connected with any life-saving device or fire system. This device is only intended to be used in residences.

WARNING: LIMITATIONS OF SMOKE DETECTORS/ TRANSMITTERS

This smoke detector is designed to activate and initiate emergency action, but will only do so when used in conjunction with an authorized fire alarm system. This detector must be installed in accordance with NFPA standard 72.

Smoke detectors will not work without power. AC or DC powered smoke detectors will not work if, for any reason, the power supply is cut off. An alarm signal sent by the wireless transmitter in this detector may be blocked or reflected by metal before reaching the alarm receiver. Even if the signal path has been recently checked, blockage may occur if a metal object is moved into the path.

Smoke detectors will not sense fires when smoke does not reach the detectors. Smoldering fires typically do not generate a large amount of heat, which is needed to drive smoke up to the ceiling where the smoke detector is usually located. For this reason, there may be large delays in detecting a smoldering fire with either an ionization-type detector or a photoelectric-type detector. Either one of them may only generate an alarm after flaming has initiated, which will generate the heat needed to drive the smoke to the ceiling.

Smoke from fires in chimneys, in walks, on roofs, or on the other side of a closed door may not reach the smoke detector and generate an alarm. A detector may not quickly detect or sense at all, a fire developing on another level of a building. Alarm warning devices, such as bells or horns, may not alert people or wake up sleepers if they are located on the other side of closed or partly open doors, or on another level. Persons may not hear a warning device over the noise levels of a radio, air conditioner or appliances or traffic. For this reason, **detectors are strongly recommended to be located on every level and in every bedroom within a building.** Alarm warning devices, however loud, may not warn hearing-impaired people or waken deep sleepers.

Smoke detectors shall be located in any room where an alarm control is located, or in any room where alarm control connections to an AC source or phone lines are made. If detectors are not so located, a fire within any of these rooms could prevent the QED control from reporting a fire.

Sensing limitations of smoke detectors. Ionization detectors and photoelectric detectors are required to pass fire tests of the flaming and smoldering types. This is to ensure that both can detect a wide range of fires. Ionization detectors offer a broad range of fire-sensing capability, but not always provide early warning of a specific type of fire.

In general, detectors cannot be expected to provide warning for fires resulting from inadequate fire protection practices, violent explosions, escaping gases that ignite, improper storage of flammable liquids like cleaning solvents that ignite, other similar safety hazards, arson, smoking in bed, children playing with matches or lighters, etc. Smoke detectors used in high air velocity conditions may have a delay in alarm due to dilution of smoke densities created by frequent and rapid air exchanges. Additionally, high air velocity environments may create increased dust contamination, demanding more frequent detector maintenance.

Maintenance of smoke detectors must be done. To keep your equipment in excellent working order, ongoing monthly maintenance is required as outlined above and as per UL and NFPA standards. At a minimum, the requirements of Chapter 7 of NFPA 72, the National Fire Alarm Code, shall be followed. A preventative maintenance agreement should be arranged through the local manufacturer's representative. Though smoke detectors are designed for long life, they may fail at any time. Any smoke detector, fire alarm equipment, or any component of that system which fails must be repaired or replaced as soon as possible.

INFORMATION TO USER

This device complies with Part 15 of the FCC Rules. Operation is subject to the following two conditions: (1) This device may not cause harmful interference, and (2) This device must accept any interference received, including interference that may cause undesired operation.

This equipment has been tested and found to comply with the limits for Class B Digital Device, pursuant to Part 15 of the FCC Rules. These limits are designed to provide reasonable protection against harmful interference in a residential installation. This equipment generates and can radiate radio frequency energy and, if not installed and used in accordance with the instructions, may cause harmful interference to radio communications. However, there is no guarantee that interference will not occur in a particular installation. If this equipment does cause harmful interference to radio or television reception, which can be determined by turning the equipment off and on, the user is encouraged to try to correct the interference by one or more of the following measures:

- Reorient or relocate the receiving antenna.
- Increase the separation between the equipment and receiver.
- Connect the equipment into an outlet on a circuit different from that to which the receiver is connected.
- Consult the dealer or an experienced radio/TV technician for help.

Changes and modifications on equipment not expressly approved by PARADOX could void the user's authority to operate the equipment.

The users manual or instruction manual for an intentional or unintentional radiator shall caution the user that changes or modifications not expressly approved by the party responsible for compliance could void the user's authority to operate the equipment.

FCC and Industry Canada Compliance Statement

This device complies with FCC Rules Part 15 and with Industry Canada licence-exempt RSS standard(s). Operation is subject to two conditions:

- (1) This device may not cause harmful interference.
- (2) This device must accept any interference that may be received or that may cause undesired operation.

Le présent appareil est conforme aux CNR d'Industrie Canada applicables aux appareils radio exempts de licence. L'exploitation est autorisée aux deux conditions suivantes : (1) l'appareil ne doit pas produire de brouillage, et (2) l'utilisateur de l'appareil doit accepter tout brouillage radioélectrique subi, même si le brouillage est susceptible d'en compromettre le fonctionnement.

FCC ID: KDYMGSMK2
IC: 2438A-MGSMK2

FCC WARNING

This equipment has been tested and found to comply with the limits for a Class B digital device, pursuant to Part 15 of the FCC Rules. These limits are designed to provide reasonable protection against harmful interference in a residential installation.

This equipment generates, uses and can radiate radio frequency energy and, if not installed and used in accordance with the instructions, may cause harmful interference to radio communications.

However, there is no guarantee that interference will not occur in a particular installation. If this equipment does cause harmful interference to radio or television reception, which can be determined by turning the equipment off and on, the user is encouraged to try to correct the interference by one or more of the following measures:

- Reorient or relocate the receiving antenna.
- Increase the separation between the equipment and the receiver.
- Connect the equipment into an outlet different from that to which the receiver is connected.
- Consult the dealer or an experienced radio/TV technician for help.

Changes or modifications to this equipment not expressly approved by the party responsible for compliance (Paradox Security Systems Ltd.) could void the user's authority to operate the equipment.

WARRANTY

For complete warranty information on this product, please refer to the Limited Warranty Statement found on the Web site www.paradox.com/terms. Your use of the Paradox product signifies your acceptance of all warranty terms and conditions.

© 2015 Paradox Security Systems Ltd. All rights reserved. Specifications may change without prior notice. www.paradox.com