

VW1100M / VW2500M series wireless Module

VitalWell Electronics Pte. Ltd.

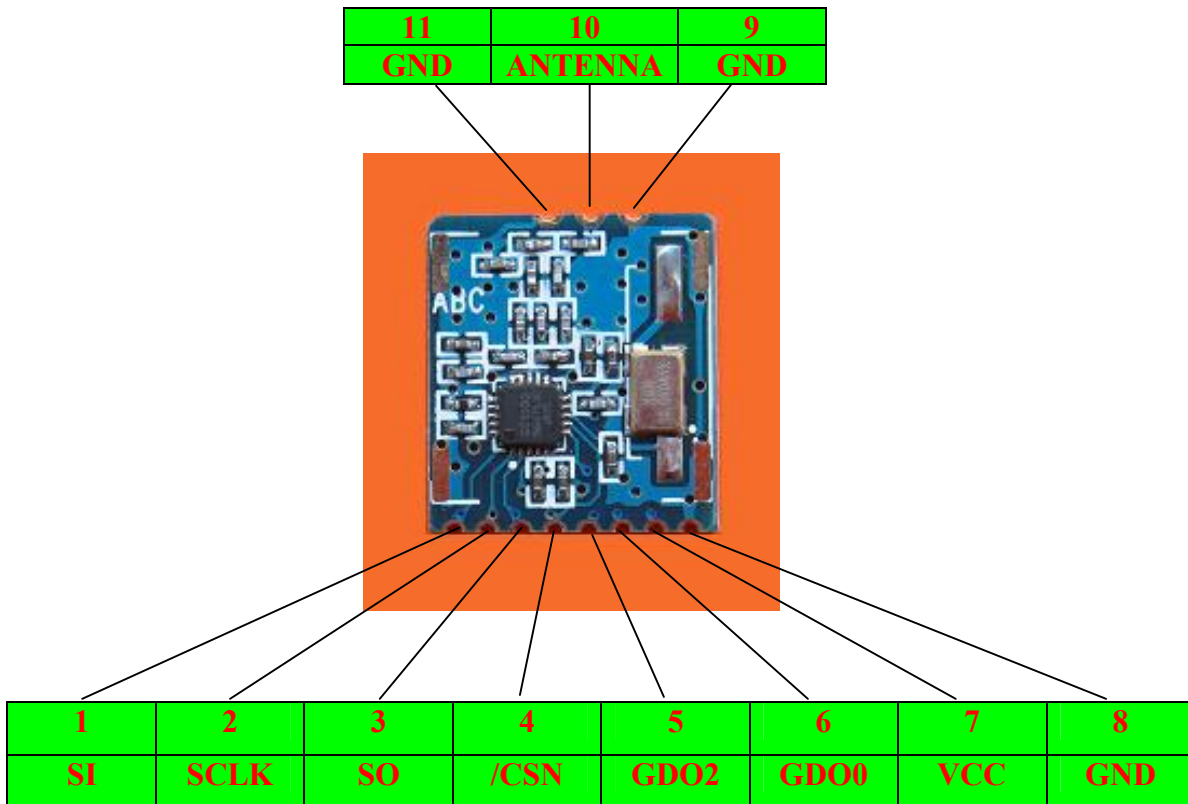


珠海元井电子有限公司
珠海唐家南方软件园 D2-408/409
中国珠海市
电话: +86-0756-3867280

VitalWell Electronics Pte Ltd.
Block D2, #408/409, Southern Software Park,
TangJia, ZhuHai, China
Tel: +86-0756-3867280

Features

- Radio chip: Chipcon CC1100 (VW1100M), CC2500(VW2500M)
 - Frequency Band: 433MHz/868MHz/915MHz /2.4GHz
 - Integrated FEC, high sensitivity.
 - Programmable data rate up to 500 kbps.
 - Separate 64-byte RX and TX data FIFOs.
 - Efficient SPI interface: All registers can be programmed with one “burst” transfer
 - Wake-on-radio functionality for automatic low-power RX polling
 - Many powerful digital features allow a high-performance RF system to be made using an inexpensive microcontroller
 - Integrated analog temperature sensor
 - Ideal for multi-channel operation
 - 2-FSK, GFSK, MSK and OOK supported
 - Small size: L x W x H = 19mm x 17mm x 3mm
-
- Interface footprint : 2.0mm SMT solder pad or pin header
 - Same footprint for VW1100M & VW2500M, different system’s design can share the same PCB layout



珠海元井电子有限公司
珠海唐家南方软件园 D2-408/409
中国珠海市
电话: +86-0756-3867280

VitalWell Electronics Pte Ltd.
Block D2, #408/409, Southern Software Park,
TangJia, ZhuHai, China
Tel: +86-0756-3867280

Recommended PCB layout for package:

Solder pads at the interface side (W x L) : 1.35mm x 1.85mm

Solder pads at the antenna side (W x L) : 1.6mm x 2mm

