

M12-Round-Plug Connector, Single-Ended Cordsets, According to IEC 61076-2-101

PRKT | PRKWT

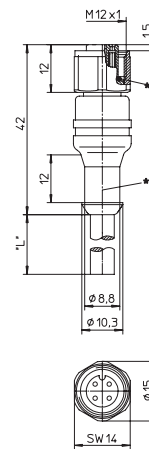


4- and 5-Poles (Stainless Steel)

Actuator/sensor cordset, single-ended, M12, 4- and 5-poles, female straight connector, internal threads with threaded joint and molded cable, hexagon screw in stainless steel.

– especially designed for use in food processing equipment applications –

PRKT



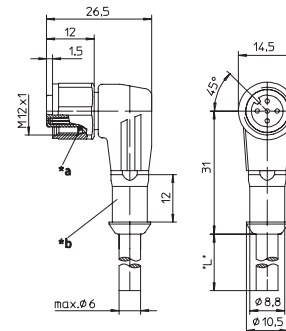
*a O-ring
b Hose mounting



Actuator/sensor cordset, single-ended, M12, 4- and 5-poles, female 90° connector, internal threads with threaded joint and molded cable, hexagon screw in stainless steel.

– especially designed for use in food processing equipment applications –

PRKWT

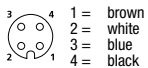


*a O-ring
b Hose mounting

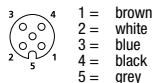
Pin Assignments

M12 - Male

4 poles



5 poles





M12-Round-Plug Connector, Single-Ended Cordsets, According to IEC 61076-2-101 PRKT | PRKWT

Technical Data

Environmental

Degree of protection IP 67 / 69K / NEMA 6P
Operating temperature range -25°C (-13°F) / +70°C (+158°F)

Mechanical







Housing / Molded body TPU
Insert TPU
Contact CuSn, pre-nickel and 0.3 microns gold-plated
Coupling nut stainless steel

Electrical

Contact resistance $\leq 5 \text{ m}\Omega$
Nominal current at 40°C 4 A
Nominal voltage 4 poles 240 V
5 poles 60 V
Rated voltage 4 poles 250 V
5 poles 63 V
Test voltage 4 poles 2.0 kV eff. / 60 s
5 poles 1.5 kV eff. / 60 s
Insulation resistance $> 10^9 \Omega$
Pollution degree 3

Cable Specifications

Cable No.	Outer Jacket	Conductor Size	Jacket Color	OD
07	PVC	4 x 0.25 mm ²	Orange	.197" (5.0 mm)
56	PVC	5 x 0.34 mm ²	Orange	.224" (5.7 mm)

Part Number	Pins	Outer Jacket	Standard Cable Lengths	Characteristics
PRKT 4-07/...M	4	PVC	5 M / 10 M / 25 M	  
PRKT 5-56/...M	5	PVC	5 M / 10 M / 25 M	  

Mouser Electronics

Authorized Distributor

Click to View Pricing, Inventory, Delivery & Lifecycle Information:

Lumberg Automation:

[PRKT 4-07/20 M](#) [PRKT 5-56/25 M](#) [PRKT 5-56/30 M](#) [PRKT 4-07/10 M](#) [PRKT 4-07/5 M](#) [PRKT 5-56/10 M](#) [PRKT 5-56/5 M](#) [PRKWT 4-07/10 M](#) [PRKWT 4-07/5 M](#) [PRKWT 5-56/5 M](#)