

# Limit switches

Osiswitch® Universal, Osiconcept®  
Compact design, plastic, type XCK P  
Complete units with 1 ISO M16 x 1.5 cable entry

Type of head	Plunger (fixing by the body)					
	Form B (1)	Form C (1)	Form E (1)	Form E (1)	Form E (1)	Form E (1)
Type of operator	Metal end plunger	Metal end plunger with elastomer boot	Steel roller plunger	Thermoplastic roller lever plunger, horizontal actuation in 1 direction	Thermoplastic roller lever plunger, vertical actuation in 1 direction	Thermoplastic roller lever plunger, horiz. or vert. actuation in 1 direction

References (2) (3)	XCK P2110P16	XCK P2111P16	XCK P2102P16	XCK P2121P16	XCK P2127P16	XCK P2128P16
	 1,8 4,6(P) 0,9 5mm	 1,8 4,6(P) 0,9 5mm	 3,1(A) 7,8(P) 1,5 mm	 6,5(A) 15,7(P) 3 mm	 6,5(B) 15,7(P) 3 mm	 9,8(A) 22,5(P) 4,9 mm
	 1,8 3,2(P) 0 3 5mm	 1,8 3,2(P) 0 3 5mm	 3,1(A) 5,6(P) 0 5,2 mm	 6,5(A) 11,3(P) 0 10,5 mm	 6,5(B) 11,3(P) 0 10,5 mm	 9,8(A) 17,2(P) 0 16,1 mm
2-pole N/C + N/C snap action (XE2S P2141)	 1,8 4,6(P) 0,9 5mm	 1,8 4,6(P) 0,9 5mm	 3,1(A) 7,8(P) 1,5 mm	 6,5(A) 15,7(P) 3 mm	 6,5(B) 15,7(P) 3 mm	 9,8(A) 22,5(P) 4,9 mm
2-pole N/C + N/C simultaneous, slow break (XE2N P2141)	 1,8 3,2(P) 0 5mm	 1,8 3,2(P) 0 5mm	 3,1 5,6(P) 0 mm	 6,6(A) 11,6(P) 0 mm	 6,6(B) 11,6(P) 0 mm	 5,3(A) 0 mm
3-pole N/C + N/C + N/O snap action (XE3S P2141)	 1,8 4,6(P) 0,9 5mm	 1,8 4,6(P) 0,9 5mm	 3,1(A) 7,8(P) 1,5 mm	 6,5(A) 15,7(P) 3 mm	 6,5(B) 15,7(P) 3 mm	 9,8(A) 22,5(P) 4,9 mm
3-pole N/C + N/C + N/O break before make, slow break (XE3N P2141)	 1,8 3,2(P) 0 3 5mm	 1,8 3,2(P) 0 3 5mm	 3,1(A) 5,6(P) 0 5,2 mm	 6,5(A) 11,3(P) 0 10,5 mm	 6,5(B) 11,3(P) 0 10,5 mm	 9,8(A) 17,2(P) 0 16,1 mm
Weight (kg)	0.090	0.090	0.095	0.105	0.100	0.105
Contact operation	contact closed contact open		(A)(B) = cam displacement (P) = positive opening point	N/C contact with positive opening operation		

Characteristics	On end	By 30° cam
Switch actuation	On end	By 30° cam
Type of actuation		
Maximum actuation speed	0.5 m/s	1 m/s
Mechanical durability (in millions of operating cycles)	15	10
Minimum force or torque	For tripping: 15 N For positive opening: 45 N	12 N 36 N
Cable entry (3)	1 entry tapped M16 x 1.5 mm for ISO cable gland, clamping capacity 4 to 8 mm	

(1) Form conforming to EN 50047, see page 31900/8.

(2) Switches with gold contacts or ring type connections: please consult our Regional Sales Office.

(3) For an entry tapped for a n° 11 cable gland, replace P16 in the reference by G11. Examples: XCK P2110P16 becomes XCK P2110G11, ZCP EP16 becomes ZCP EG11.

# Limit switches

Osiswitch® Universal, Osiconcept®  
Compact design, plastic, type XCK P  
Complete units with 1 ISO M16 x 1.5 cable entry

Type of head	Plunger (fixing by the head)	Rotary (fixing by the body)					Multi-directional
		Form A (1)					

Type of operator	M18 with metal end plunger	M18 with steel roller plunger	Thermoplastic roller lever	Variable length thermoplastic roller lever	Thermoplastic roller lever, Ø 50 mm	Variable length thermoplastic roller lever, Ø 50 mm	"Cat's whisker" (4)
------------------	----------------------------	-------------------------------	----------------------------	--	-------------------------------------	---	---------------------

References (2)							
	<b>XCK P21H0P16</b> 1,8 4,6(P) 0,9 5mm	<b>XCK P21H2P16</b> 3,1(A) 7,8(P) 0 1,5 mm	<b>XCK P2118P16</b> 25° 70°(P) 0 12° 90°	<b>XCK P2145P16</b> 25° 70°(P) 0 12° 90°	<b>XCK P2139P16</b> 25° 70°(P) 0 12° 90°	<b>XCK P2149P16</b> 25° 70°(P) 0 12° 90°	<b>XCK P2106P16</b> 20° 0 15°
	<b>XCK P25H0P16</b> 1,8 3,2(P) 0 3 5mm	<b>XCK P25H2P16</b> 3,1(A) 5,6(P) 0 5,2 mm	<b>XCK P2518P16</b> 25° 46°(P) 0 42° 90°	<b>XCK P2545P16</b> 25° 46°(P) 0 42° 90°	<b>XCK P2539P16</b> 25° 46°(P) 0 42° 90°	<b>XCK P2549P16</b> 25° 46°(P) 0 42° 90°	<b>XCK P2506P16</b> 20° 0 45°
	<b>ZCP 29 + ZCP EP16 + ZCE H0</b> 1,8 4,6(P) 0,9 5mm	<b>ZCP 29 + ZCP EP16 + ZCE H2</b> 3,1(A) 7,8(P) 0 1,5 mm	<b>ZCP 29 + ZCP EP16 + ZCE 01 + ZCY 18</b> 25° 70°(P) 0 12° 90°	<b>ZCP 29 + ZCP EP16 + ZCE 01 + ZCY 45</b> 25° 70°(P) 0 12° 90°	<b>ZCP 29 + ZCP EP16 + ZCE 01 + ZCY 39</b> 25° 70°(P) 0 12° 90°	<b>ZCP 29 + ZCP EP16 + ZCE 01 + ZCY 49</b> 25° 70°(P) 0 12° 90°	<b>ZCP29 + ZCP EP16 + ZCE 06</b> 20° 0 15°
	<b>ZCP 27 + ZCP EP16 + ZCE H0</b> 1,8 3,2(P) 0 5mm	<b>ZCP 27 + ZCP EP16 + ZCE H2</b> 3,1 5,6(P) 0 5,2 mm	<b>ZCP 27 + ZCP EP16 + ZCE 01 + ZCY 18</b> 25° 46°(P) 0 42° 90°	<b>ZCP 27 + ZCP EP16 + ZCE 01 + ZCY 45</b> 25° 46°(P) 0 42° 90°	<b>ZCP 27 + ZCP EP16 + ZCE 01 + ZCY 39</b> 25° 46°(P) 0 42° 90°	<b>ZCP 27 + ZCP EP16 + ZCE 01 + ZCY 49</b> 25° 46°(P) 0 42° 90°	<b>ZCP 27 + ZCP EP16 + ZCE 06</b> 20° 0 45°
	<b>ZCP 39 + ZCP EP16 + ZCE H0</b> 1,8 4,6(P) 0 5mm	<b>ZCP 39 + ZCP EP16 + ZCE H2</b> 3,1(A) 7,8(P) 0 1,5 mm	<b>ZCP 39 + ZCP EP16 + ZCE 01 + ZCY 18</b> 25° 70°(P) 0 12° 90°	<b>ZCP 39 + ZCP EP16 + ZCE 01 + ZCY 45</b> 25° 70°(P) 0 12° 90°	<b>ZCP 39 + ZCP EP16 + ZCE 01 + ZCY 39</b> 25° 70°(P) 0 12° 90°	<b>ZCP 39 + ZCP EP16 + ZCE 01 + ZCY 49</b> 25° 70°(P) 0 12° 90°	<b>ZCP 39 + ZCP EP16 + ZCE 06</b> 20° 0 15°
	<b>ZCP 37 + ZCP EP16 + ZCE H0</b> 1,8 3,2(P) 0 3 5mm	<b>ZCP 37 + ZCP EP16 + ZCE H2</b> 3,1(A) 5,6(P) 0 5,2 mm	<b>ZCP 37 + ZCP EP16 + ZCE 01 + ZCY 18</b> 25° 46°(P) 0 42° 90°	<b>ZCP 37 + ZCP EP16 + ZCE 01 + ZCY 45</b> 25° 46°(P) 0 42° 90°	<b>ZCP 37 + ZCP EP16 + ZCE 01 + ZCY 39</b> 25° 46°(P) 0 42° 90°	<b>ZCP 37 + ZCP EP16 + ZCE 01 + ZCY 49</b> 25° 46°(P) 0 42° 90°	<b>ZCP 37 + ZCP EP16 + ZCE 06</b> 20° 0 45°
<b>Weight (kg)</b>	0.130	0.130	0.135	0.145	0.145	0.155	0.085
<b>Contact operation</b>	contact closed contact open		(A) = cam displacement (P) = positive opening point		N/C contact with positive opening operation		

Characteristics					
<b>Switch actuation</b>	On end	By 30° cam			By any moving part
<b>Type of actuation</b>					
<b>Maximum actuation speed</b>	0.5 m/s	1.5 m/s			1 m/s (any direct.)
<b>Mechanical durability</b>	10 million operating cycles				5 million op. cycles
<b>Minimum force or torque</b>	For tripping For positive opening	15 N 45 N	10 N 36 N	0.1 N.m 0.25 N.m	0.13 N.m -
<b>Cable entry (3)</b>	1 entry tapped M16 x 1.5 mm for ISO cable gland, clamping capacity 4 to 8 mm				

(1) Form conforming to EN 50047, see page 31900/8.  
 (2) Switches with gold contacts or ring type connections: please consult our Regional Sales Office.  
 (3) For an entry tapped for a n° 11 cable gland, replace P16 in the ref. by G11. Examples: XCK P21H0P16 becomes XCK P21H0G11, ZCP EP16 becomes ZCP EG11.  
 (4) Value taken with actuation by moving part at 100 mm from the fixings.

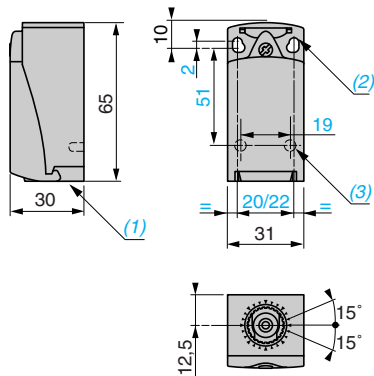
## Limit switches

Osiswitch® Universal, Osiconcept®

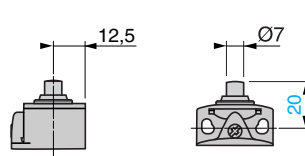
Compact design, plastic, type XCK P

Complete units with 1 ISO M16 x 1.5 cable entry

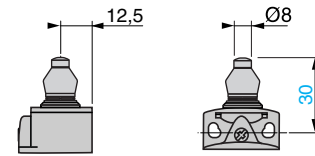
ZCP 2● + ZCP EP16 / ZCP 3● + ZCP EP16



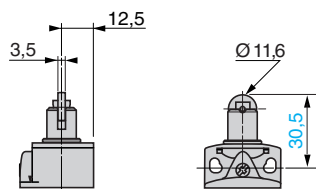
ZCE 10



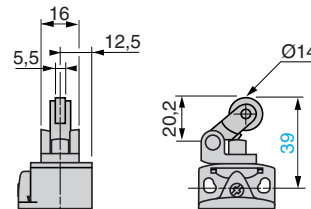
ZCE 11



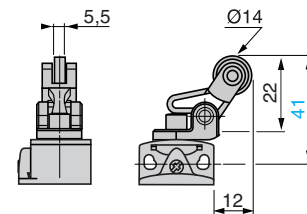
ZCE 02



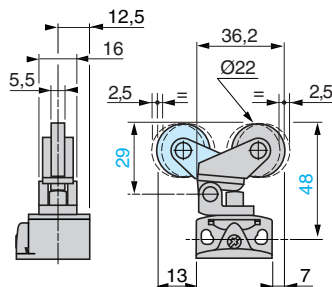
ZCE 21



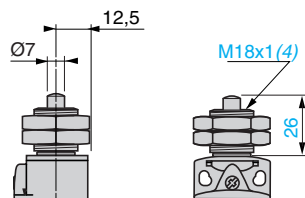
ZCE 27



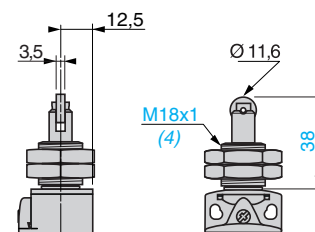
ZCE 28



ZCE H0



ZCE H2



- (1) Tapped entry for ISO M16 x 1.5 or Pg 11 cable gland.  
 (2) 2 elongated holes Ø 4.3 x 6.3 mm on 22 mm centres, 2 holes Ø 4.3 on 20 mm centres.  
 (3) 2 x Ø 3 holes for support studs, depth 4 mm.  
 (4) Fixing nut thickness 3.5 mm.

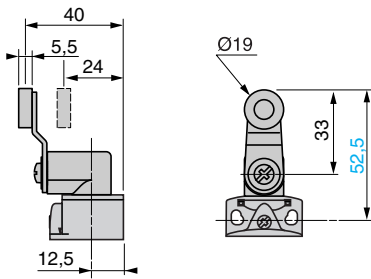
# Limit switches

Osiswitch® Universal, Osiconcept®

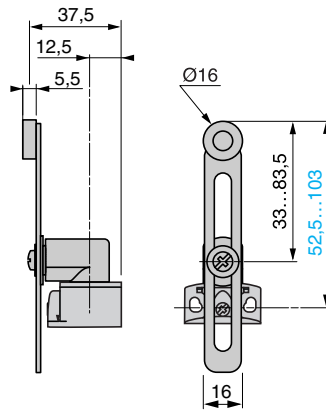
Compact design, plastic, type XCK P

Complete units with 1 ISO M16 x 1.5 cable entry

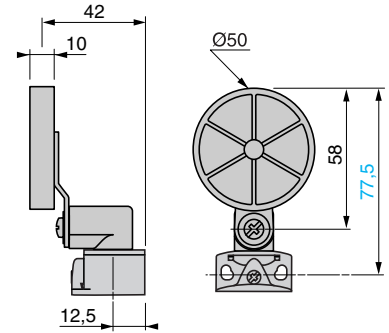
ZCE 01 + ZCY 18



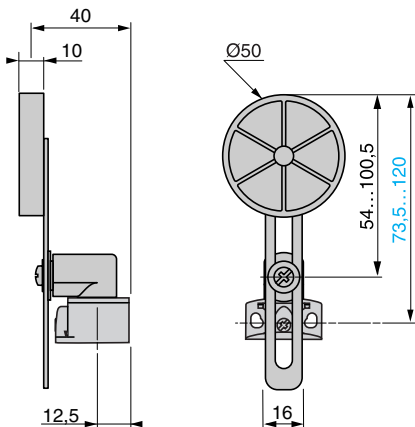
ZCE 01 + ZCY 45



ZCE 01 + ZCY 39



ZCE 01 + ZCY 49



ZCE 06

