

Product Information

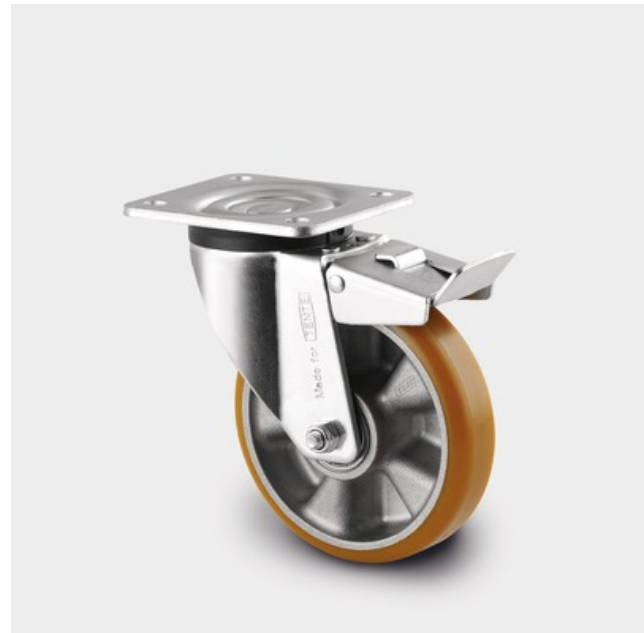


3677ITP125P62

EAN 4031582417494

Swivel castor with total lock, tail end of castor, housing made of pressed steel, bright zinc plated, blue passivated, double ball bearing swivel head, wheel axle with nut, plate fitting.

Wheel centre made of Aluminium, Tread: Polyurethane, casted, precision ball bearing



Technical Data

Wheel diameter	125 mm
Width of Tread	40 mm
Size of Plate	105 x 85 mm
Plate hole centres	80/77 x 60 mm
Plate hole	9 mm
Offset	41 mm
Swivel Interference	246 mm
Overall height	157 mm
Temperature	- 20 / + 60 °C
Standard	EN 12532
Weight	1.64 kg
Swivel Radius	123 mm
Hardness of tread	Shore A 92
Load capacity	300 kg
Load capacity (static)	600 kg

Roll performance	+	+	+	+	+
Movement noise	+	+	+	+	+
Attrition	+	+	+	+	+
Corrosion resistance	+	+	+	+	+